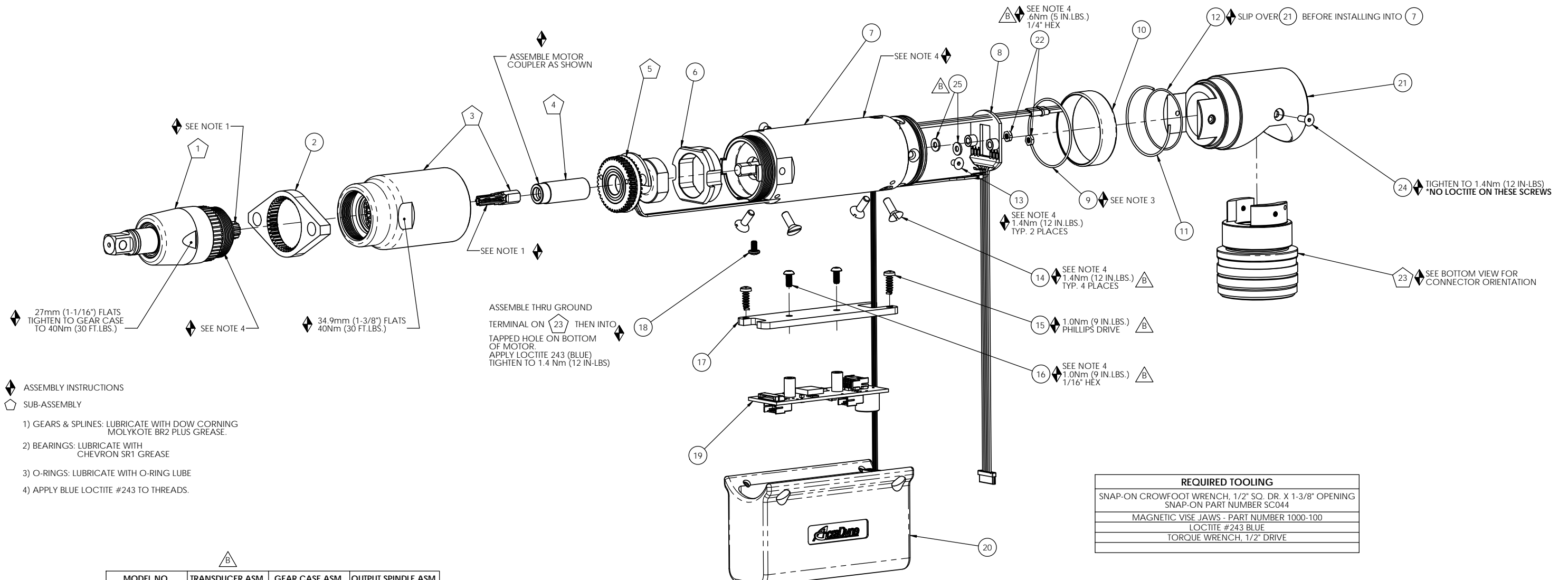


COMMENTS	ITEM NO.	PART NUMBER	QTY	DESCRIPTION
	1	SEE CHART	1	RETRACTABLE OUTPUT SPINDLE ASM, 3/8 SQ
	2	24924	1	MOUNTING FLANGE
	3	SEE CHART	1	GEAR CASE SUB-ASM.
	4	24780	1	MOTOR COUPLER SUB-ASM.
	5	SEE CHART	1	TRANSDUCER SUB-ASM.
	6	25763	1	TRANSDUCER ADAPTOR
	7	26218	1	PISTOL MOTOR ASM.
	8	26599	1	LED PCB ASSY, PISTOL
	9	24687	1	O-RING, LIGHT RING, LEVER
	10	24873	1	LIGHT RING
	11	24686	1	RETAINING RING, LEVER LIGHT RING
	12	24731	1	O-RING, RING GEAR
	13	25138	2	SCREW, FHC 4-40 X .312, STEEL, BLACK OXIDE
	14	24933	4	FLAT HEAD CAP SCREW
	15	24917	2	BHCS, #4 x .38 LG TAP-TITE
	16	24914	2	BHCS, #4-40 x .25 LG
	17	24913	1	CIRCUIT BOARD MOUNTING PLATE
	18	25419	1	SCREW, PHM 4-40 X .188, STEEL, PLAIN
	19	25849	1	T.I.D. BOARD ASM., PISTOL
	20	24912	1	COVER, CIRCUIT BOARD
	21	24910	1	RIGHT ANGLE ADAPTOR, TOOL CONN.
	22	27016	2	NUT, HEX, 4-40 UNDERSIZED, STEEL ZINC
	23	25889	1	TOOL CONNECTOR ASM., TOP EXIT PISTOL
	24	24934	2	SCREW, FHC 4-40 X .312, STEEL, BLACK OXIDE
	25	28167	2	WASHER, FLAT, #4, POLYCARBONATE



- ◆ ASSEMBLY INSTRUCTIONS
 - ◊ SUB-ASSEMBLY
- 1) GEARS & SPLINES: LUBRICATE WITH DOW CORNING MOLYKOTE BR2 PLUS GREASE.
 - 2) BEARINGS: LUBRICATE WITH CHEVRON SR1 GREASE
 - 3) O-RINGS: LUBRICATE WITH O-RING LUBE
 - 4) APPLY BLUE LOCTITE #243 TO THREADS.

REQUIRED TOOLING	
SNAP-ON CROWFOOT WRENCH, 1/2" SQ. DR. X 1-3/8" OPENING	SNAP-ON PART NUMBER SC044
MAGNETIC VISE JAWS - PART NUMBER 1000-100	
LOCTITE #243 BLUE	
TORQUE WRENCH, 1/2" DRIVE	

	MODEL NO.	TRANSDUCER ASM.	GEAR CASE ASM.	OUTPUT SPINDLE ASM.
CATALOG MODELS 1/2" SLIDING SPINDLE	AEF4A12003BB	25759.001	24860	24918
	AEF4A12006BB	25760.002	24860	24918
	AEF4A12011BB	25761.003	24709	24918
	AEF4A12014BB	25761.005	24792	24918
OPTIONAL MODELS 1.75" SLIDING SPINDLE	AEF4A12018BB	25761.008	24710	24918
	AEF4A12022BB	25761.010	24781	24918
	AEF4C12003BB	25759.001	24860	26374
	AEF4C12006BB	25760.002	24860	26374
	AEF4C12011BB	25761.003	24709	26374
	AEF4C12014BB	25761.005	24792	26374
	AEF4C12018BB	25761.008	24710	26374
	AEF4C12022BB	25761.010	24781	26374



DOCUMENT CONTROL
 PRINTED COPIES OF THIS DOCUMENT ARE CONSIDERED TO BE UNCONTROLLED DOCUMENTS. HOLDERS ARE RESPONSIBLE FOR VERIFYING THE CURRENT REVISION LEVEL WITH PURCHASING OR ENGINEERING PRIOR TO USE OR FABRICATION. THE CONTROLLED VERSION OF THIS DOCUMENT IS ELECTRONICALLY MAINTAINED.

PROPRIETARY AND CONFIDENTIAL
 THIS DRAWING CONTAINS INFORMATION STRICTLY CONFIDENTIAL TO ACRADYNE/AIMCO. IN THE ABSENCE OF EXPRESSED WRITTEN PERMISSION, ACRADYNE/AIMCO HAS LOANED THIS COPY WITH THE MUTUAL UNDERSTANDING THAT (A) IT WILL NOT BE USED FOR ANY PURPOSE OTHER THAN FOR THAT IN WHICH IT WAS PROVIDED, (B) THE DATA CONTAINED HEREIN WILL NOT BE DISCLOSED TO OTHERS, (C) IT WILL NOT BE REPRODUCED, AND (D) IT WILL BE RETURNED TO ACRADYNE/AIMCO IMMEDIATELY UPON DEMAND.

REVISION LEVEL	REVISION RELEASE DATE	DESCRIPTION OF CHANGES MADE TO PART	ECN #	AUTHOR/ APPROVAL

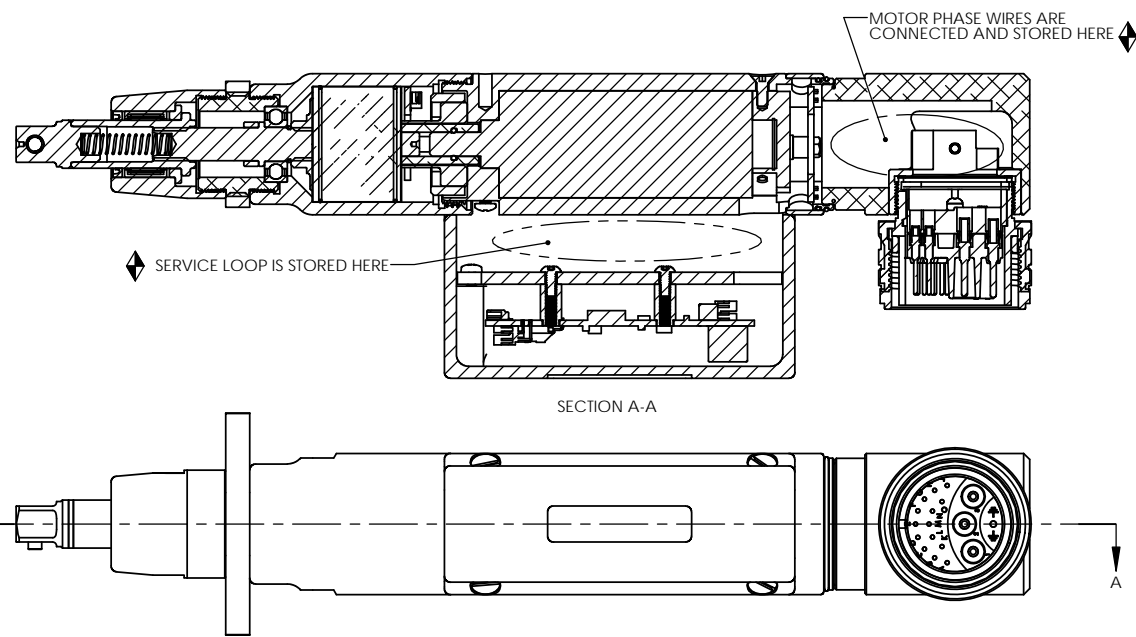
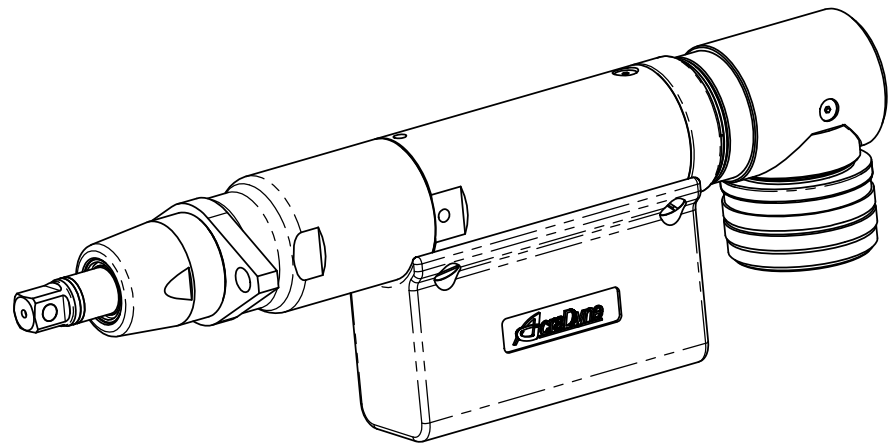
UNLESS OTHERWISE SPECIFIED, DIMENSIONS ARE IN INCHES
 DIMENSIONS AND TOLERANCING PER ANSI Y14.5
 SURFACE ROUGHNESS PER ANSI Y14.36

BLOCK TOLERANCING PER DECIMAL:
 .X = ±.030 .XX = ±.010 .XXX = ±.005 .XXXX = ±.0005
 ANGLE = 30°/30°

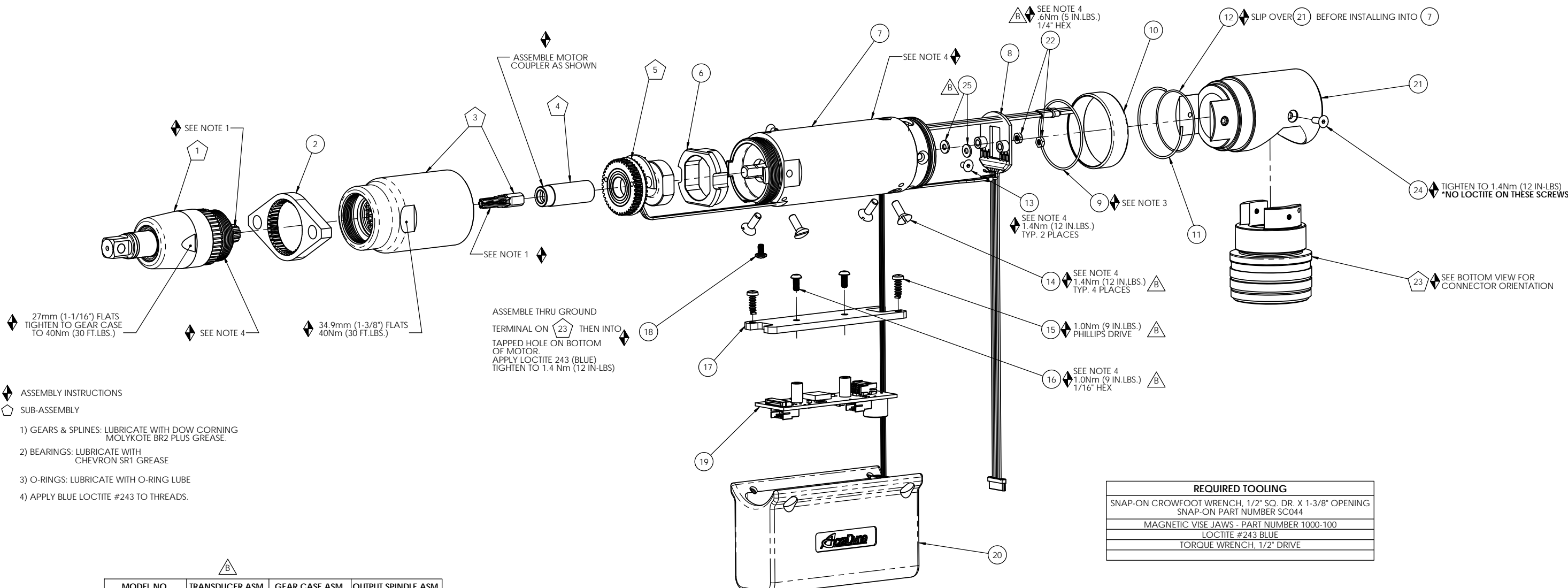
REMOVE BURRS AND SHARP EDGES: R.015 MAX
 MACHINE SURFACE FINISH: 125 RMS OR BETTER

DRAWINGS AND TECHNICAL DOCUMENTS CONTROLLED BY:
ACRADYNE MECHANICAL ENGINEERING

AEF4 12__BB FIXTURED NUTRUNNER		
1000 SERIES		
SIZE	PART / DRAWING NUMBER	REVISION
D	AEF4_12__BB	B
SCALE 1:1	DO NOT SCALE DRAWING	SHEET 1 OF 2



COMMENTS	ITEM NO.	PART NUMBER	QTY	DESCRIPTION
	1	SEE CHART	1	RETRACTABLE OUTPUT SPINDLE ASM, 3/8 SQ
	2	24924	1	MOUNTING FLANGE
	3	SEE CHART	1	GEAR CASE SUB-ASM.
	4	24780	1	MOTOR COUPLER SUB-ASM.
	5	SEE CHART	1	TRANSDUCER SUB-ASM.
	6	25763	1	TRANSDUCER ADAPTOR
	7	26218	1	PISTOL MOTOR ASM.
	8	26599	1	LED PCB ASSY, PISTOL
	9	24687	1	O-RING, LIGHT RING, LEVER
	10	24873	1	LIGHT RING
	11	24686	1	RETAINING RING, LEVER LIGHT RING
	12	24731	1	O-RING, RING GEAR
	13	25138	2	SCREW, FHC 4-40 X .312, STEEL, BLACK OXIDE
	14	24933	4	FLAT HEAD CAP SCREW
	15	24917	2	BHCS, #4 x .38 LG TAP-TITE
	16	24914	2	BHCS, #4-40 x .25 LG
	17	24913	1	CIRCUIT BOARD MOUNTING PLATE
	18	25419	1	SCREW, PHM 4-40 X .188, STEEL, PLAIN
	19	25849	1	T.I.D. BOARD ASM., PISTOL
	20	24912	1	COVER, CIRCUIT BOARD
	21	24910	1	RIGHT ANGLE ADAPTOR, TOOL CONN.
	22	27016	2	NUT, HEX, 4-40 UNDERSIZED, STEEL ZINC
	23	25889	1	TOOL CONNECTOR ASM., TOP EXIT PISTOL
	24	24934	2	SCREW, FHC 4-40 X .312, STEEL, BLACK OXIDE
	25	28167	2	WASHER, FLAT, #4, POLYCARBONATE



- ◆ ASSEMBLY INSTRUCTIONS
 - ◊ SUB-ASSEMBLY
- 1) GEARS & SPLINES: LUBRICATE WITH DOW CORNING MOLYKOTE BR2 PLUS GREASE.
 - 2) BEARINGS: LUBRICATE WITH CHEVRON SR1 GREASE
 - 3) O-RINGS: LUBRICATE WITH O-RING LUBE
 - 4) APPLY BLUE LOCTITE #243 TO THREADS.

REQUIRED TOOLING	
SNAP-ON CROWFOOT WRENCH, 1/2" SQ. DR. X 1-3/8" OPENING	SNAP-ON PART NUMBER SC044
MAGNETIC VISE JAWS - PART NUMBER 1000-100	
LOCTITE #243 BLUE	
TORQUE WRENCH, 1/2" DRIVE	

	MODEL NO.	TRANSDUCER ASM.	GEAR CASE ASM.	OUTPUT SPINDLE ASM.
CATALOG MODELS 1/2" SLIDING SPINDLE	AEF4A12003BB	25759.001	24860	24918
	AEF4A12006BB	25760.002	24860	24918
	AEF4A12011BB	25761.003	24709	24918
	AEF4A12014BB	25761.005	24792	24918
OPTIONAL MODELS 1.75" SLIDING SPINDLE	AEF4A12018BB	25761.008	24710	24918
	AEF4A12022BB	25761.010	24781	24918
	AEF4C12003BB	25759.001	24860	26374
	AEF4C12006BB	25760.002	24860	26374
	AEF4C12011BB	25761.003	24709	26374
	AEF4C12014BB	25761.005	24792	26374
	AEF4C12018BB	25761.008	24710	26374
	AEF4C12022BB	25761.010	24781	26374



DOCUMENT CONTROL
 PRINTED COPIES OF THIS DOCUMENT ARE CONSIDERED TO BE UNCONTROLLED DOCUMENTS. HOLDERS ARE RESPONSIBLE FOR VERIFYING THE CURRENT REVISION LEVEL WITH PURCHASING OR ENGINEERING PRIOR TO USE OR FABRICATION. THE CONTROLLED VERSION OF THIS DOCUMENT IS ELECTRONICALLY MAINTAINED.

PROPRIETARY AND CONFIDENTIAL
 THIS DRAWING CONTAINS INFORMATION STRICTLY CONFIDENTIAL TO ACRADYNE/AIMCO. IN THE ABSENCE OF EXPRESSED WRITTEN PERMISSION, ACRADYNE/AIMCO HAS LOANED THIS COPY WITH THE MUTUAL UNDERSTANDING THAT (A) IT WILL NOT BE USED FOR ANY PURPOSE OTHER THAN FOR THAT IN WHICH IT WAS PROVIDED, (B) THE DATA CONTAINED HEREIN WILL NOT BE DISCLOSED TO OTHERS, (C) IT WILL NOT BE REPRODUCED, AND (D) IT WILL BE RETURNED TO ACRADYNE/AIMCO IMMEDIATELY UPON DEMAND.

REVISION LEVEL	REVISION RELEASE DATE	DESCRIPTION OF CHANGES MADE TO PART	ECN #	AUTHOR/ APPROVAL

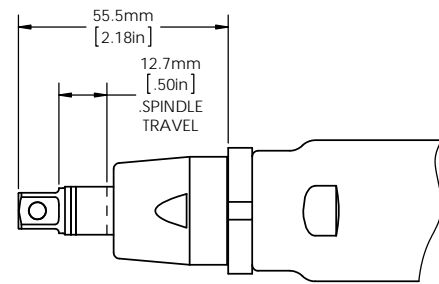
UNLESS OTHERWISE SPECIFIED, DIMENSIONS ARE IN INCHES
 DIMENSIONS AND TOLERANCING PER ANSI Y14.5
 SURFACE ROUGHNESS PER ANSI Y14.36

BLOCK TOLERANCING PER DECIMAL:
 .X = ±.030 .XX = ±.010 .XXX = ±.005 .XXXX = ±.0005
 ANGLE = 30°/30°

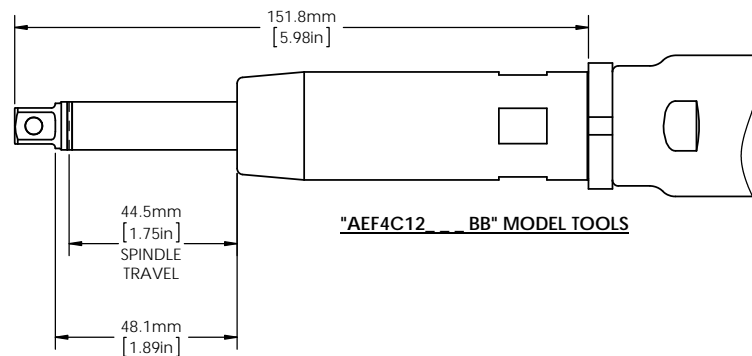
REMOVE BURRS AND SHARP EDGES: R.015 MAX
 MACHINE SURFACE FINISH: 125 RMS OR BETTER

DRAWINGS AND TECHNICAL DOCUMENTS CONTROLLED BY:
ACRADYNE MECHANICAL ENGINEERING

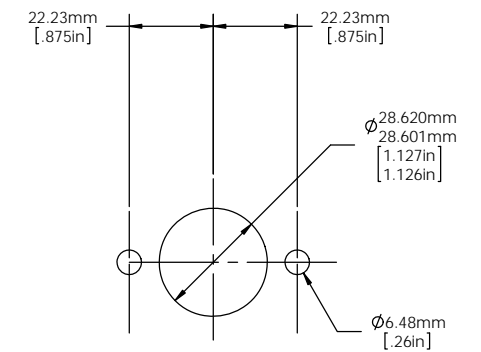
AEF4 12__BB FIXTURED NUTRUNNER		
1000 SERIES		
SIZE	PART / DRAWING NUMBER	REVISION
D	AEF4_12__BB	B
SCALE 1:1	DO NOT SCALE DRAWING	SHEET 1 OF 2



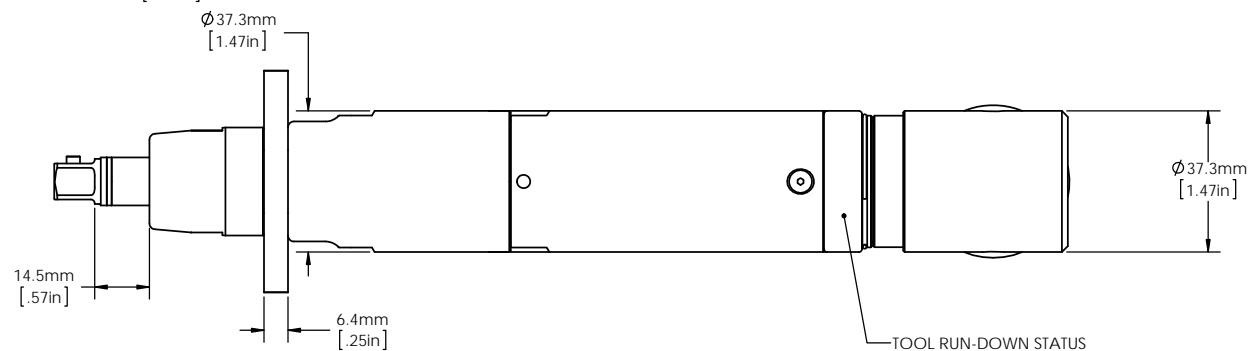
"AEF4A12__BB" MODEL TOOLS



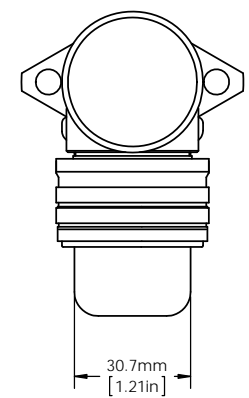
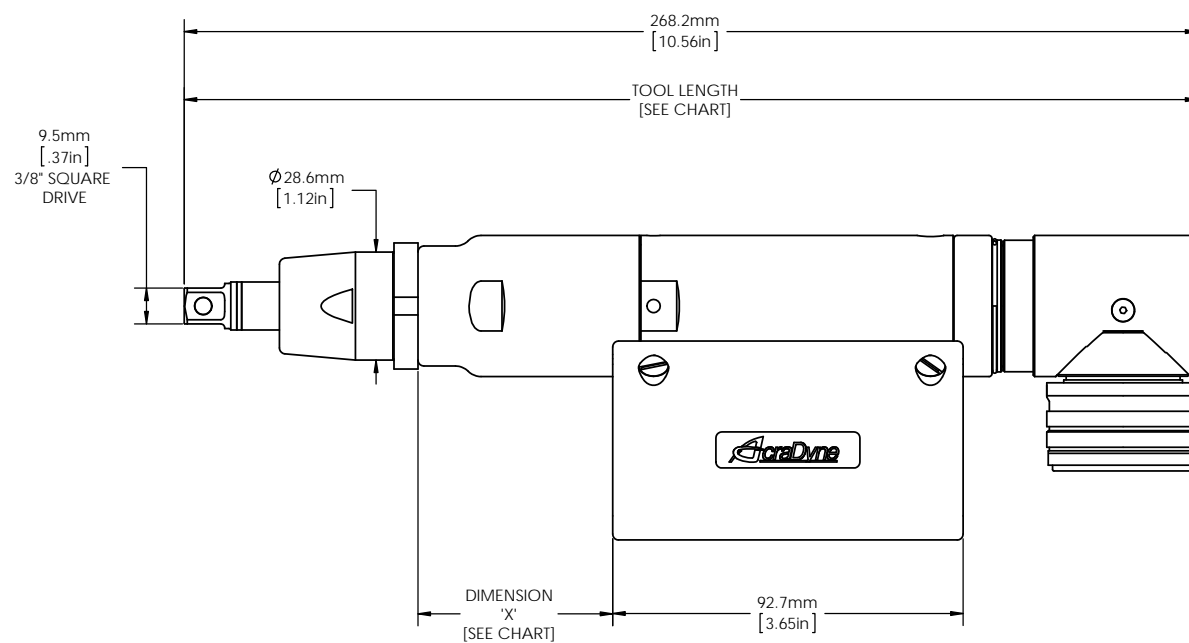
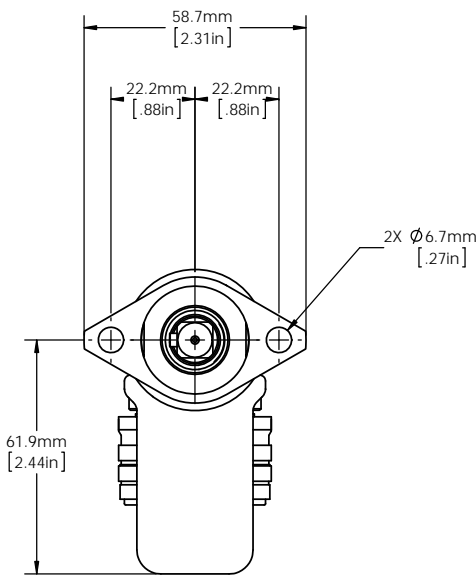
"AEF4C12__BB" MODEL TOOLS



MOUNTING PLATE DIMENSIONS (SUPPLIED BY CUSTOMER)



TOOL RUN-DOWN STATUS LIGHT LOCATION 2 PLACES 180° APART



	MODEL NO.	TOOL LENGTH	X
CATALOG MODELS 1/2" SLIDING SPINDLE	AEF4A12003BB	268.8mm [10.58in]	52.2mm [2.05in]
	AEF4A12006BB	268.8mm [10.58in]	52.2mm [2.05in]
	AEF4A12011BB	285.5mm [11.24in]	69.2mm [2.72in]
	AEF4A12014BB	285.5mm [11.24in]	69.2mm [2.72in]
	AEF4A12018BB	285.5mm [11.24in]	69.2mm [2.72in]
OPTIONAL MODELS 1.75" SLIDING SPINDLE	AEF4A12022BB	285.5mm [11.24in]	69.2mm [2.72in]
	AEF4C12003BB	365.1mm [14.37in]	52.2mm [2.05in]
	AEF4C12006BB	365.1mm [14.37in]	52.2mm [2.05in]
	AEF4C12011BB	381.8mm [15.03in]	69.2mm [2.72in]
	AEF4C12014BB	381.8mm [15.03in]	69.2mm [2.72in]
	AEF4C12018BB	381.8mm [15.03in]	69.2mm [2.72in]
	AEF4C12022BB	381.8mm [15.03in]	69.2mm [2.72in]



DOCUMENT CONTROL
PRINTED COPIES OF THIS DOCUMENT ARE CONSIDERED TO BE UNCONTROLLED DOCUMENTS. HOLDERS ARE RESPONSIBLE FOR VERIFYING THE CURRENT REVISION LEVEL WITH PURCHASING OR ENGINEERING PRIOR TO USE OR FABRICATION. THE CONTROLLED VERSION OF THIS DOCUMENT IS ELECTRONICALLY MAINTAINED.

PROPRIETARY AND CONFIDENTIAL
THIS DRAWING CONTAINS INFORMATION STRICTLY CONFIDENTIAL TO ACRADYNE/AIMCO. IN THE ABSENCE OF EXPRESSED WRITTEN PERMISSION, ACRADYNE/AIMCO HAS LOANED THIS COPY WITH THE MUTUAL UNDERSTANDING THAT (A) IT WILL NOT BE USED FOR ANY PURPOSE OTHER THAN FOR THAT IN WHICH IT WAS PROVIDED, (B) THE DATA CONTAINED HEREIN WILL NOT BE DISCLOSED TO OTHERS, (C) IT WILL NOT BE REPRODUCED, AND (D) IT WILL BE RETURNED TO ACRADYNE/AIMCO IMMEDIATELY UPON DEMAND.

REVISION LEVEL	REVISION RELEASE DATE	DESCRIPTION OF CHANGES MADE TO PART	ECN #	AUTHOR/ APPROVAL

UNLESS OTHERWISE SPECIFIED, DIMENSIONS ARE IN INCHES
DIMENSIONS AND TOLERANCING PER ANSI Y14.5
SURFACE ROUGHNESS PER ANSI Y14.36

BLOCK TOLERANCING PER DECIMAL:
.X = ±.030 .XX = ±.010 .XXX = ±.005 .XXXX = ±.0005
ANGLE = ±0° 30'

REMOVE BURRS AND SHARP EDGES: R.015 MAX
MACHINE SURFACE FINISH: 125 RMS OR BETTER

DRAWINGS AND TECHNICAL DOCUMENTS CONTROLLED BY:
ACRADYNE MECHANICAL ENGINEERING

**AEF4_12__BB
FIXTURED NUTRUNNER
OUTLINE DRAWING
1000 SERIES**

SIZE	PART / DRAWING NUMBER	REVISION
D	AEF4_12__BB	B

SCALE 1:1 DO NOT SCALE DRAWING SHEET 2 OF 2