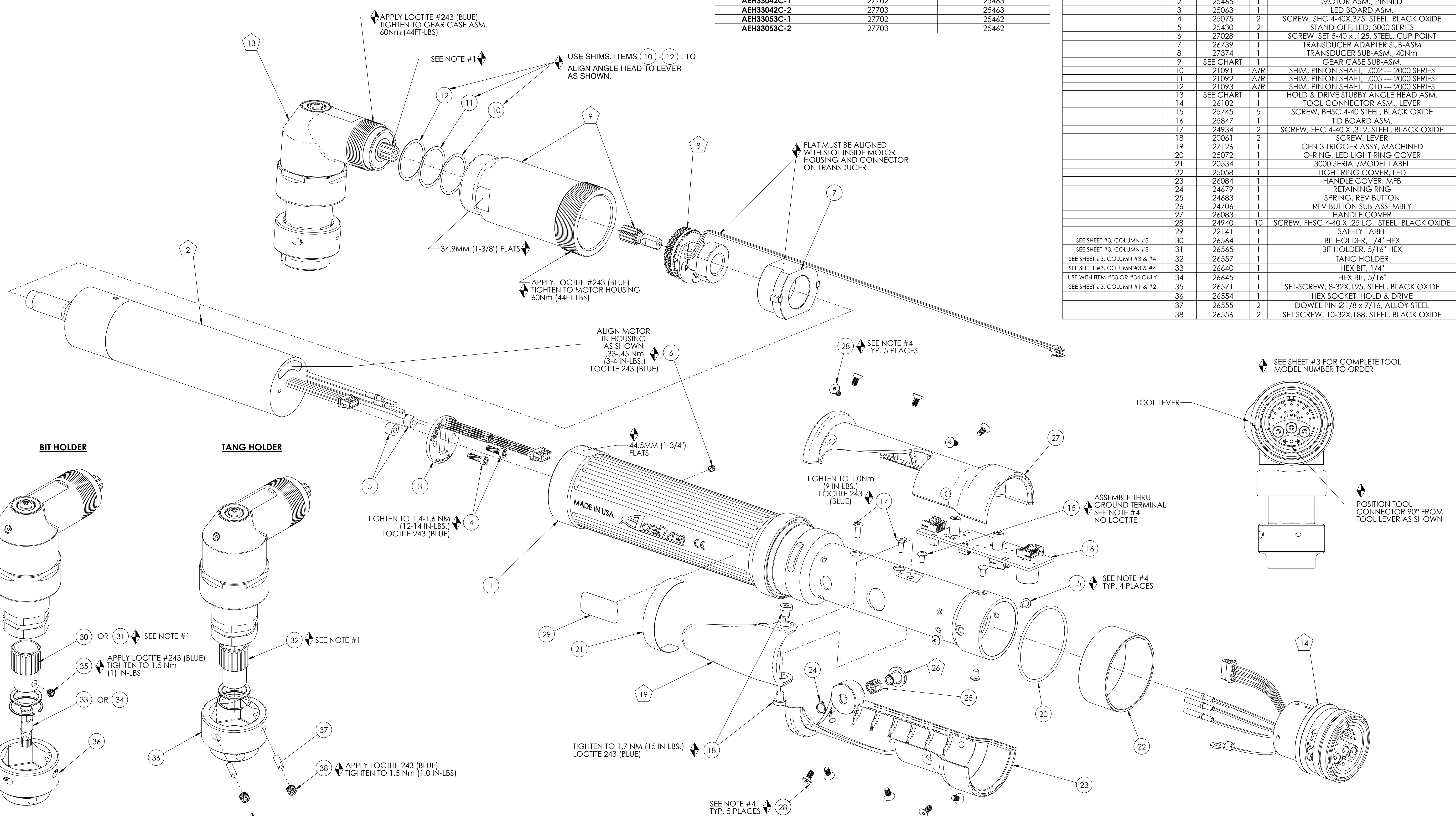


MODEL NO.	ANGLE HEAD G.C. ASM.	GEAR CASE SUB-ASM.
AEH33042C-1	27702	25463
AEH33042C-2	27703	25463
AEH33053C-1	27702	25462
AEH33053C-2	27703	25462

COMMENTS	ITEM NO.	PART NUMBER	QTY.	DESCRIPTION
	1	26740	1	HOUSING, MOTOR/HANDLE
	2	25465	1	MOTOR ASM., PINNED
	3	25063	1	LED BOARD ASM.
	4	25075	2	SCREW, SHC 4-40X.375, STEEL, BLACK OXIDE
	5	25430	2	STAND-OFF, LED, 3000 SERIES
	6	27028	1	SCREW, SET 5-40 x .125, STEEL, CUP POINT
	7	26739	1	TRANSDUCER ADAPTER SUB-ASM.
	8	27374	1	TRANSDUCER SUB-ASM., 40Nm
	9	SEE CHART	1	GEAR CASE SUB-ASM.
	10	21091	A/R	SHIM, PINION SHAFT, .002 --- 2000 SERIES
	11	21092	A/R	SHIM, PINION SHAFT, .005 --- 2000 SERIES
	12	21093	A/R	SHIM, PINION SHAFT, .010 --- 2000 SERIES
	13	SEE CHART	1	HOLD & DRIVE STUBBY ANGLE HEAD ASM.
	14	26102	1	TOOL CONNECTOR ASM., LEVER
	15	25745	5	SCREW, BHSC 4-40 STEEL, BLACK OXIDE
	16	25847	1	TID BOARD ASM.
	17	24934	2	SCREW, FHC 4-40 X .312, STEEL, BLACK OXIDE
	18	20061	2	SCREW, LEVER
	19	27126	1	GEN 3 TRIGGER ASSY, MACHINED
	20	25072	1	O-RING, LED LIGHT RING COVER
	21	20534	1	3000 SERIAL/MODEL LABEL
	22	25058	1	LIGHT RING COVER, LED
	23	26084	1	HANDLE COVER, MFB
	24	24679	1	RETAINING RING
	25	24683	1	SPRING, REV BUTTON
	26	24706	1	REV BUTTON SUB-ASSEMBLY
	27	26083	1	HANDLE COVER
	28	24940	10	SCREW, FHSC 4-40 X .25 LG., STEEL, BLACK OXIDE
	29	22141	1	SAFETY LABEL
SEE SHEET #3, COLUMN #3	30	26564	1	BIT HOLDER, 1/4" HEX
SEE SHEET #3, COLUMN #3	31	26565	1	BIT HOLDER, 5/16" HEX
SEE SHEET #3, COLUMN #3 & #4	32	26557	1	TANG HOLDER
SEE SHEET #3, COLUMN #3 & #4	33	26640	1	HEX BIT, 1/4"
USE WITH ITEM #33 OR #34 ONLY	34	26645	1	HEX BIT, 5/16"
SEE SHEET #3, COLUMN #1 & #2	35	26571	1	SET-SCREW, 8-32X.125, STEEL, BLACK OXIDE
	36	26554	1	HEX SOCKET, HOLD & DRIVE
	37	26555	2	DOWEL PIN Ø1/8 x 7/16, ALLOY STEEL
	38	26556	2	SET SCREW, 10-32X.188, STEEL, BLACK OXIDE



REQUIRED TOOLING
LOCTITE 243 (BLUE)
1/16 HEX WRENCH
5/64 HEX WRENCH
3/32 HEX WRENCH
SNAP RING PLIERS - EXTERNAL TYPE

- ◆ ASSEMBLY INSTRUCTIONS  
 ◊ SUB-ASSEMBLY
- GEARS & SPLINES: LUBRICATE WITH DOW CORNING MOLYKOTE BR2 PLUS GREASE.
  - BEARINGS: LUBRICATE WITH CHEVRON SR1 GREASE
  - O-RINGS: LUBRICATE WITH O-RING LUBE
  - TIGHTEN TO 1 NM (9 IN-LBS.) LOCTITE 243 (BLUE)



**DOCUMENT CONTROL**  
 PRINTED COPIES OF THIS DOCUMENT ARE CONSIDERED TO BE UNCONTROLLED DOCUMENTS. HOLDERS ARE RESPONSIBLE FOR VERIFYING THE CURRENT REVISION LEVEL WITH PURCHASING OR ENGINEERING PRIOR TO USE OR FABRICATION. THE CONTROLLED VERSION OF THIS DOCUMENT IS ELECTRONICALLY MAINTAINED.

**PROPRIETARY AND CONFIDENTIAL**  
 THIS DRAWING CONTAINS INFORMATION STRICTLY CONFIDENTIAL TO ACRADYNE/AIMCO. IN THE ABSENCE OF EXPRESSED WRITTEN PERMISSION, ACRADYNE/AIMCO HAS LOANED THIS COPY WITH THE MUTUAL UNDERSTANDING THAT (A) IT WILL NOT BE USED FOR ANY PURPOSE OTHER THAN FOR THAT IN WHICH IT WAS PROVIDED, (B) THE DATA CONTAINED HEREIN WILL NOT BE DISCLOSED TO OTHERS, (C) IT WILL NOT BE REPRODUCED, AND (D) IT WILL BE RETURNED TO ACRADYNE/AIMCO IMMEDIATELY UPON DEMAND.

REVISION LEVEL	REVISION RELEASE DATE	DESCRIPTION OF CHANGES MADE TO PART	ECN #	AUTHOR / APPROVAL
A	1/08/14	PRODUCTION RELEASE	1098	T. BURNETT

**UNLESS OTHERWISE SPECIFIED, DIMENSIONS ARE IN INCHES**  
 DIMENSIONS AND TOLERANCING PER ANSI Y14.5 SURFACE ROUGHNESS PER ANSI Y14.36

**BLOCK TOLERANCING PER DECIMAL:**  
 X = ±.030 XX = ±.010 XXX = ±.005 XXXX = ±.0005 ANGLE = ±0°30'

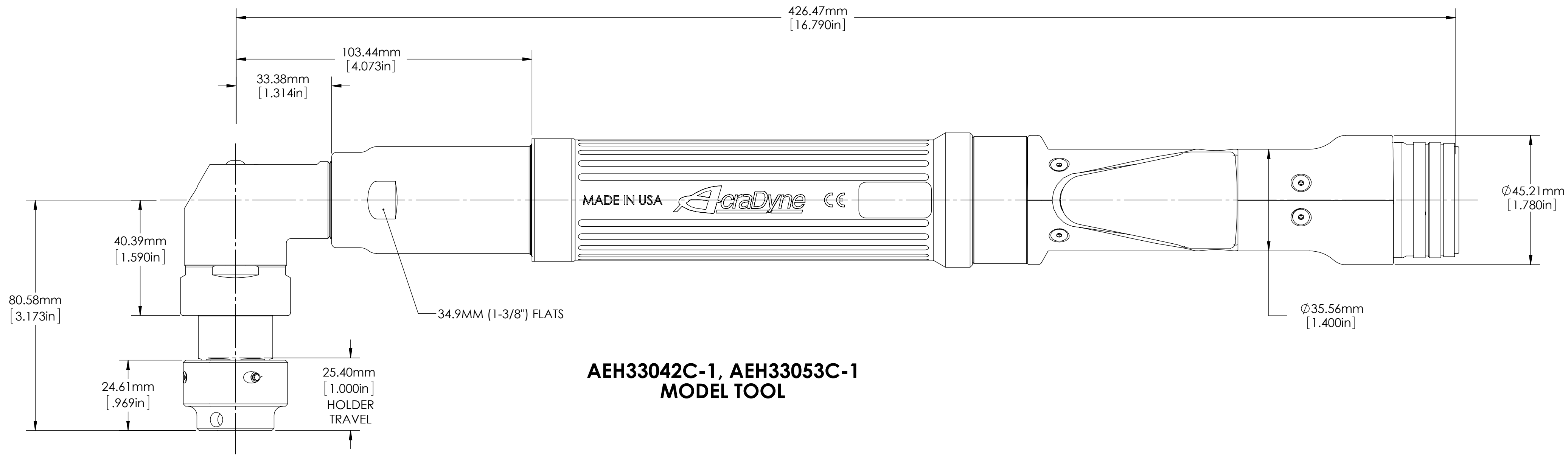
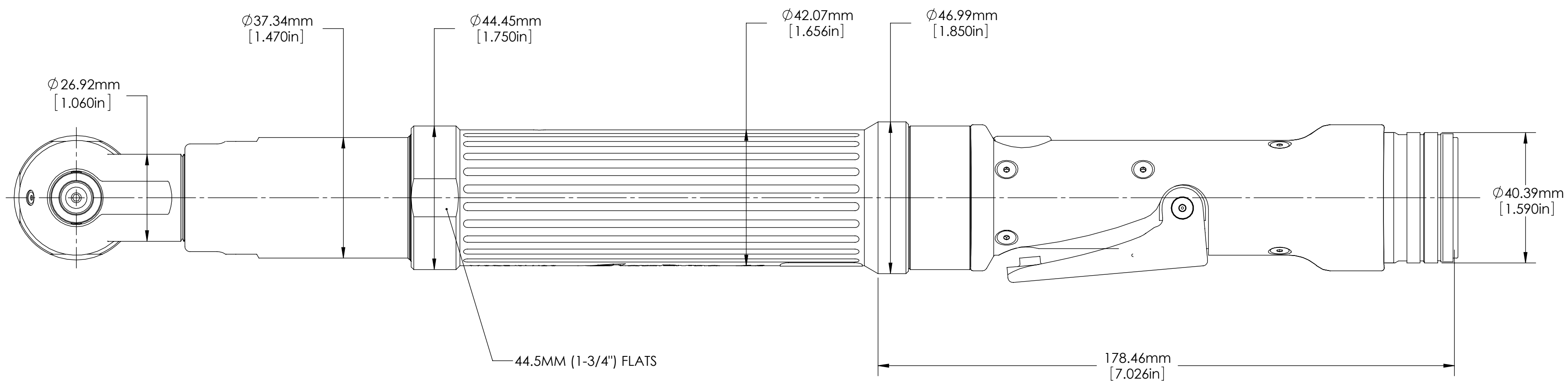
REMOVE BURRS AND SHARP EDGES: R.015 MAX MACHINE SURFACE FINISH: 125 RMS OR BETTER

DRAWINGS AND TECHNICAL DOCUMENTS CONTROLLED BY:  
**ACRADYNE MECHANICAL ENGINEERING**

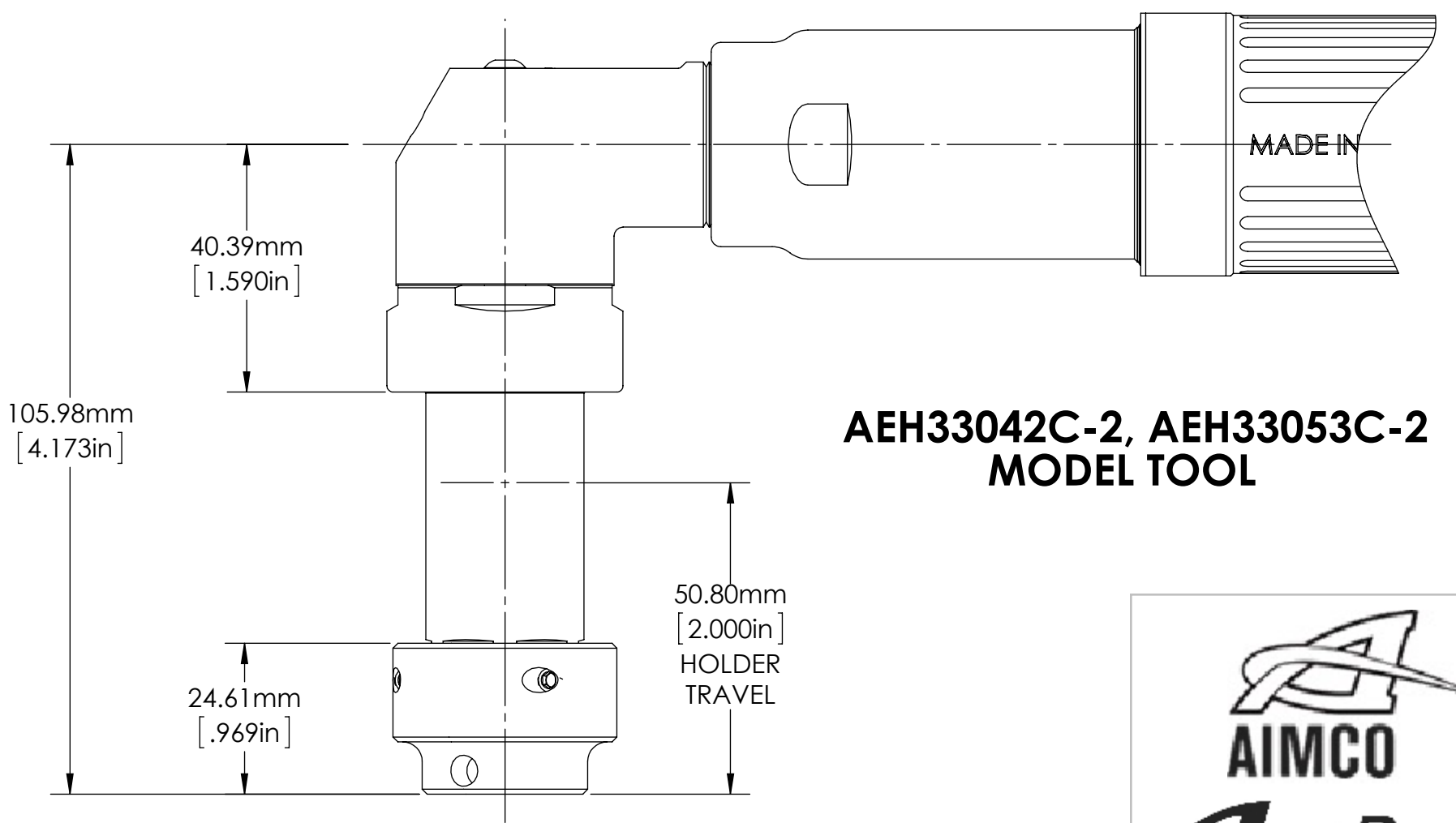
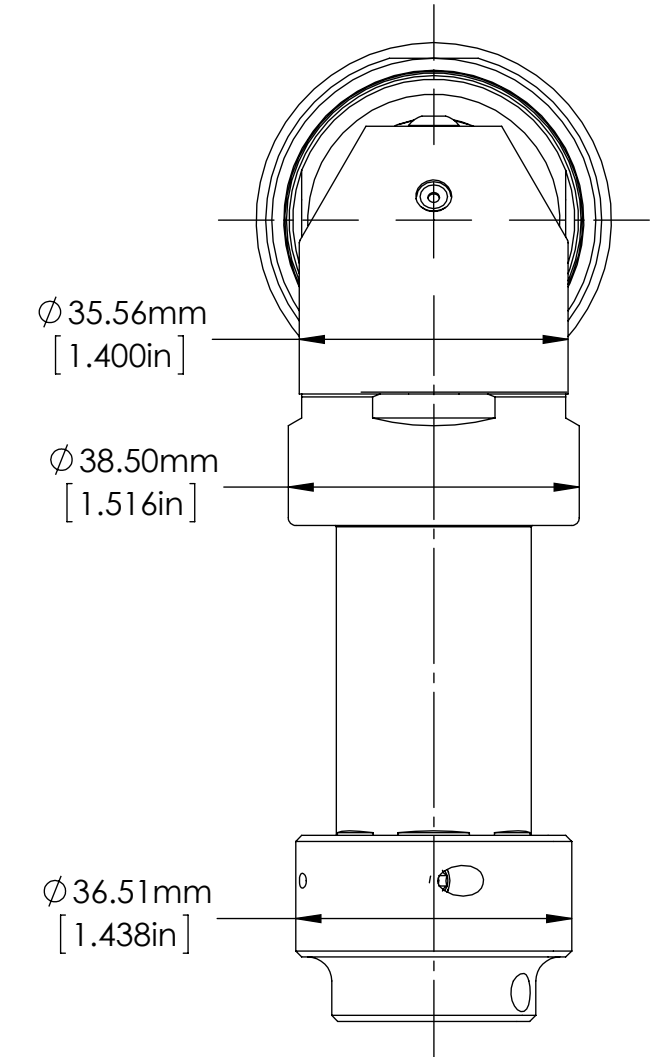
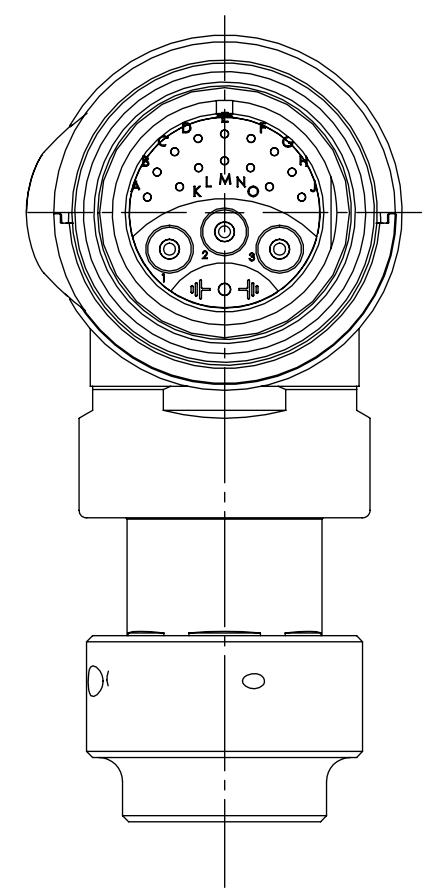
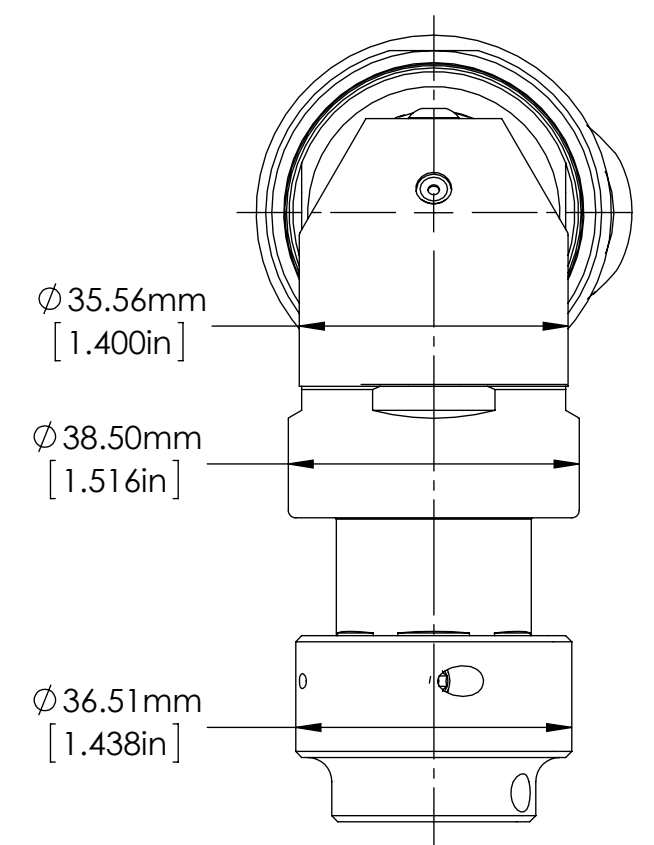
SIZE	PART / DRAWING NUMBER	REVISION
D	AEH330 C- HOLD & DRIVE NUTRUNNER 3000 SERIES, GEN 3C	A

SCALE 1:1 DO NOT SCALE DRAWING SHEET 1 OF 3





**AEH33042C-1, AEH33053C-1  
MODEL TOOL**



**AEH33042C-2, AEH33053C-2  
MODEL TOOL**



**DOCUMENT CONTROL**  
PRINTED COPIES OF THIS DOCUMENT ARE CONSIDERED TO BE UNCONTROLLED DOCUMENTS. HOLDERS ARE RESPONSIBLE FOR VERIFYING THE CURRENT REVISION LEVEL WITH PURCHASING OR ENGINEERING PRIOR TO USE OR FABRICATION. THE CONTROLLED VERSION OF THIS DOCUMENT IS ELECTRONICALLY MAINTAINED.

**PROPRIETARY AND CONFIDENTIAL**  
THIS DRAWING CONTAINS INFORMATION STRICTLY CONFIDENTIAL TO ACRADYNE/AIMCO. IN THE ABSENCE OF EXPRESSED WRITTEN PERMISSION, ACRADYNE/AIMCO HAS LOANED THIS COPY WITH THE MUTUAL UNDERSTANDING THAT (A) IT WILL NOT BE USED FOR ANY PURPOSE OTHER THAN FOR THAT IN WHICH IT WAS PROVIDED, (B) THE DATA CONTAINED HEREIN WILL NOT BE DISCLOSED TO OTHERS, (C) IT WILL NOT BE REPRODUCED, AND (D) IT WILL BE RETURNED TO ACRADYNE/AIMCO IMMEDIATELY UPON DEMAND.

REVISION LEVEL	REVISION RELEASE DATE	DESCRIPTION OF CHANGES MADE TO PART	ECN #	AUTHOR/ APPROVAL
A	1/08/14	PRODUCTION RELEASE	1098	T. BURNETT

**UNLESS OTHERWISE SPECIFIED, DIMENSIONS ARE IN INCHES**  
DIMENSIONS AND TOLERANCING PER ANSI Y14.5  
SURFACE ROUGHNESS PER ANSI Y14.36

**BLOCK TOLERANCING PER DECIMAL:**  
X = ±.030 .XX = ±.010 .XXX = ±.005 .XXXX = ±.0005  
ANGLE = ±0° 30'


REMOVE BURRS AND SHARP EDGES: R.015 MAX  
MACHINE SURFACE FINISH: 125 RMS OR BETTER

DRAWINGS AND TECHNICAL DOCUMENTS CONTROLLED BY:  
**ACRADYNE MECHANICAL ENGINEERING**

<b>AEH330_C- HOLD &amp; DRIVE NUTRUNNER 3000 SERIES, GEN 3C</b>		
SIZE <b>D</b>	PART / DRAWING NUMBER <b>AEH330_C-</b>	REVISION <b>A</b>
SCALE 1:1	DO NOT SCALE DRAWING	SHEET 2 OF 3

BASE MODEL	DOT	SOCKET BASE	COLUMN 1	SOCKET SIZE	COLUMN 2	HOLDER BASE	COLUMN 3	HOLDER SIZE	COLUMN 4
AEH33042C- AEH33053C-	:	X	SOCKET TYPE & EXTENSION	X	HEX SIZE	X	TANG/BIT HOLDER & EXTENSION	X	SIZE
							<b>BIT HOLDER</b>		
		A	26554-1 SINGLE HEX (NO EXTENSION)	A	14mm	A	26564-1 (1/4" BIT)(NO EXTENSION)	A	4mm
		B	26554-2 SINGLE HEX (3mm EXTENDED)	B	15mm	B	26564-2 (1/4" BIT)(3mm EXTENDED)	B	5mm
		C	26554-3 SINGLE HEX (6mm EXTENDED)	C	16mm	C	26564-3 (1/4" BIT)(6mm EXTENDED)	C	6mm
		D	26554-4 SINGLE HEX (12mm EXTENDED)	D	17mm	D	26564-4 (1/4" BIT)(12mm EXTENDED)	D	7mm
		E	26554-5 SINGLE HEX (24mm EXTENDED)	E	18mm	E	26564-5 (1/4" BIT)(24mm EXTENDED)	E	8mm
				F	19mm			F	9mm
		F	26554-1 SURFACE DRIVE (NO EXTENSION)	G	20mm	F	26565-1 (5/16" BIT)(NO EXTENSION)	G	10mm
		G	26554-2 SURFACE DRIVE (3mm EXTENDED)	H	21mm	G	26565-2 (5/16" BIT)(3mm EXTENDED)	H	3/16"
		H	26554-3 SURFACE DRIVE (6mm EXTENDED)	I	9/16"	H	26565-3 (5/16" BIT)(6mm EXTENDED)	I	1/4"
		J	26554-4 SURFACE DRIVE (12mm EXTENDED)	J	5/8"	I	26565-4 (5/16" BIT)(12mm EXTENDED)	J	5/16"
		K	26554-5 SURFACE DRIVE (24mm EXTENDED)	K	11/16"	J	26565-5 (5/16" BIT)(24mm EXTENDED)	K	3/8"
				L	3/4"		<b>FEMALE TANG HOLDER</b>	L	T15
		L	26554-1 DOUBLE HEX (NO EXTENSION)	M	13/16"	K	26557-1 HEX (NO EXTENSION)	M	T20
		M	26554-2 DOUBLE HEX (3mm EXTENDED)	N		L	26557-2 HEX (3mm EXTENDED)	N	T25
		N	26554-3 DOUBLE HEX (6mm EXTENDED)	O		M	26557-3 HEX (6mm EXTENDED)	O	T30
		P	26554-4 DOUBLE HEX (12mm EXTENDED)	P		N	26557-4 HEX (12mm EXTENDED)	P	T40
		Q	26554-5 DOUBLE HEX (24mm EXTENDED)	Q		P	26557-5 HEX (24mm EXTENDED)	Q	T45
				R				R	T50
				S		Q	26557-1 TORX (NO EXTENSION)	S	E8
				T		R	26557-2 TORX (3mm EXTENDED)	T	E10
				U		S	26557-3 TORX (6mm EXTENDED)	U	E11
				V		T	26557-4 TORX (12mm EXTENDED)	V	E12
				W		U	26557-5 TORX (24mm EXTENDED)		
				X					
				Y		V	26557-1 D-TYPE (NO EXTENSION)	W	4 x 6
				Z		W	26557-2 D-TYPE (3mm EXTENDED)	X	5 x 8
						X	26557-3 D-TYPE (6mm EXTENDED)	Y	6 x 8
						Y	26557-4 D-TYPE (12mm EXTENDED)	Z	6.4 x 8
						Z	26557-5 D-TYPE (24mm EXTENDED)	1	TBD

**\*\*EXAMPLE MODEL NUMBER:** AEH33053C-1.CDHK = 1" TRAVEL, SINGLE HEX EXT. 6mm, 17mm HEX, 5/16" BIT HOLDER EXT. 6mm WITH 3/8" HEX BIT

 <p>AIMCO AcraDyne A Division of AIMCO 10000 SE PINE STREET PORTLAND, OREGON 97216 503.254.6600</p>	<p><b>DOCUMENT CONTROL</b> PRINTED COPIES OF THIS DOCUMENT ARE CONSIDERED TO BE UNCONTROLLED DOCUMENTS. HOLDERS ARE RESPONSIBLE FOR VERIFYING THE CURRENT REVISION LEVEL WITH PURCHASING OR ENGINEERING PRIOR TO USE OR FABRICATION. THE CONTROLLED VERSION OF THIS DOCUMENT IS ELECTRONICALLY MAINTAINED.</p>			<p><b>UNLESS OTHERWISE SPECIFIED, DIMENSIONS ARE IN INCHES</b> DIMENSIONS AND TOLERANCING PER ANSI Y14.5 SURFACE ROUGHNESS PER ANSI Y14.36</p>			<p><b>AEH330_C_</b> <b>HOLD &amp; DRIVE NUTRUNNER</b> 3000 SERIES, GEN 3C</p>											
	<p><b>PROPRIETARY AND CONFIDENTIAL</b> THIS DRAWING CONTAINS INFORMATION STRICTLY CONFIDENTIAL TO ACRADYNE/AIMCO. IN THE ABSENCE OF EXPRESSED WRITTEN PERMISSION, ACRADYNE/AIMCO HAS LOANED THIS COPY WITH THE MUTUAL UNDERSTANDING THAT (A) IT WILL NOT BE USED FOR ANY PURPOSE OTHER THAN FOR THAT IN WHICH IT WAS PROVIDED, (B) THE DATA CONTAINED HEREIN WILL NOT BE DISCLOSED TO OTHERS, (C) IT WILL NOT BE REPRODUCED, AND (D) IT WILL BE RETURNED TO ACRADYNE/AIMCO IMMEDIATELY UPON DEMAND.</p>			<p><b>BLOCK TOLERANCING PER DECIMAL:</b> .X = ±.030 .XX = ±.010 .XXX = ±.005 .XXXX = ±.0005 ANGLE = ±0° 30'</p>			<p>REMOVE BURRS AND SHARP EDGES: R.015 MAX MACHINE SURFACE FINISH: 125 RMS OR BETTER</p>											
<p><b>REVISION BLOCK</b></p> <table border="1"> <tr> <th>REVISION LEVEL</th> <th>REVISION RELEASE DATE</th> <th>DESCRIPTION OF CHANGES MADE TO PART</th> <th>ECN #</th> <th>AUTHOR/ APPROVAL</th> </tr> <tr> <td>A</td> <td>1/08/14</td> <td>PRODUCTION RELEASE</td> <td>1098</td> <td>T. BURNETT</td> </tr> </table>			REVISION LEVEL	REVISION RELEASE DATE	DESCRIPTION OF CHANGES MADE TO PART	ECN #	AUTHOR/ APPROVAL	A	1/08/14	PRODUCTION RELEASE	1098	T. BURNETT	<p>DRAWINGS AND TECHNICAL DOCUMENTS CONTROLLED BY: <b>ACRADYNE MECHANICAL ENGINEERING</b></p>			<p>SCALE 1:8 DO NOT SCALE DRAWING SHEET 3 OF 3</p>		
REVISION LEVEL	REVISION RELEASE DATE	DESCRIPTION OF CHANGES MADE TO PART	ECN #	AUTHOR/ APPROVAL														
A	1/08/14	PRODUCTION RELEASE	1098	T. BURNETT														