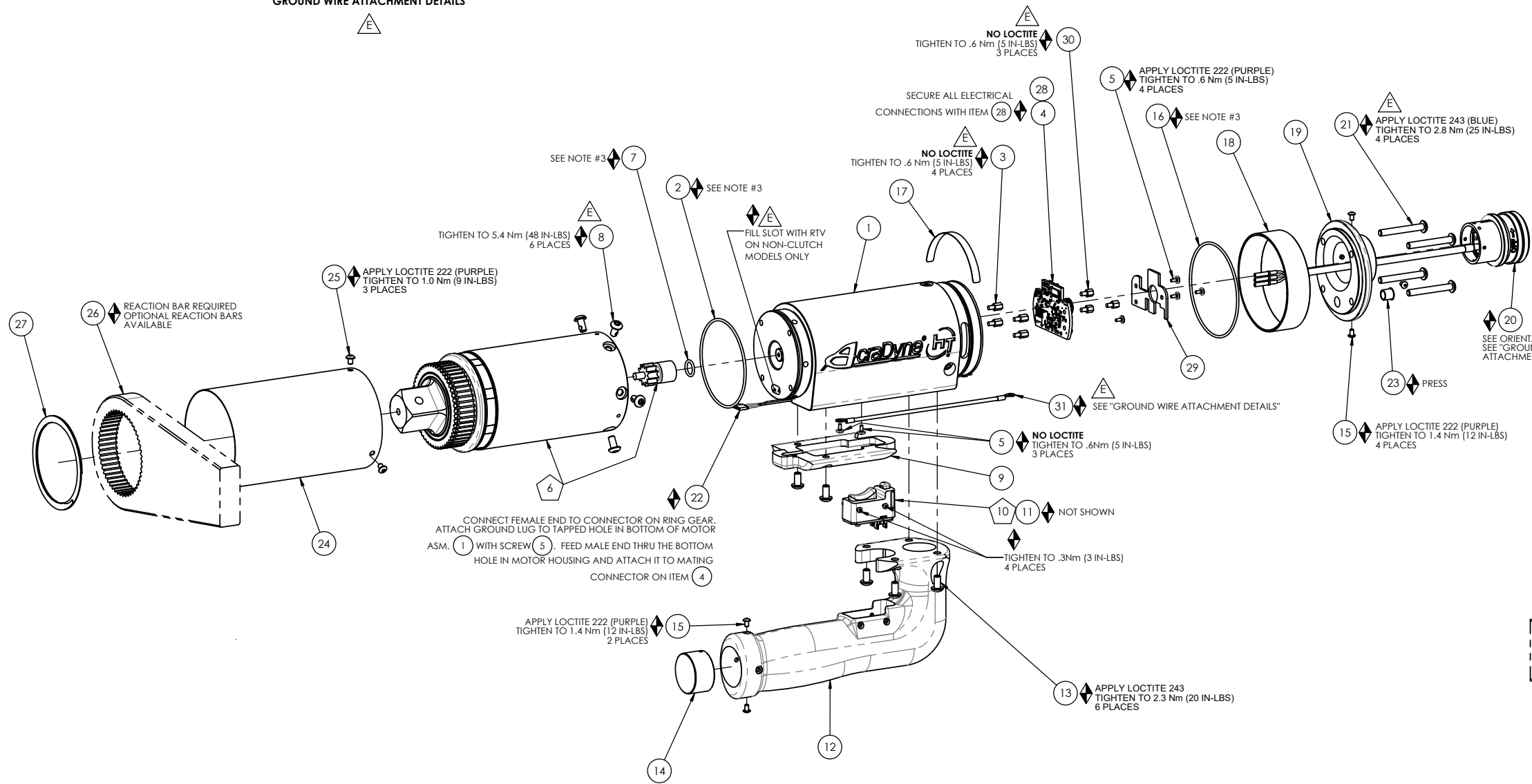
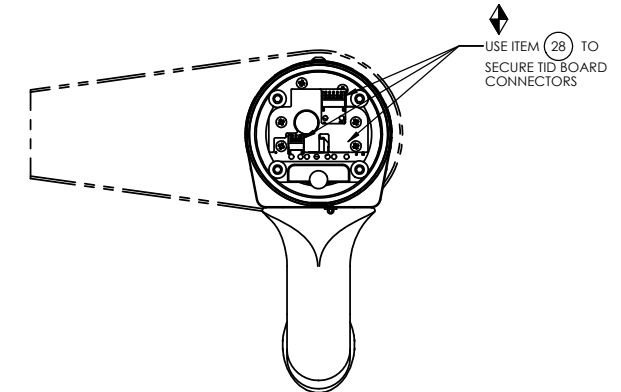


GROUND WIRE ATTACHMENT DETAILS



COMMENTS	ITEM NO.	PART NUMBER	QTY.	DESCRIPTION
	1	26212	1	MOTOR ASM., 7000 SERIES
	2	26227	1	O-RING, MOTOR HOUSING
	3	25574	4	STANDOFF M-F, 4-40x1/4, 3/16 HEX, SS
	4	27727	1	TID BOARD, POPULATED W/AMP
	5	25573	8	SCREW PHP 4-40 X 3/16 18-8 SS
	6	SEE CHART	1	GEAR BOX ASM.
	7	26299	1	O-RING, PINION
	8	29279	6	SCREW, BHSC, 10-32 x 3/8, TORX HEAD, NYLON PELL-IT, STEEL
	9	26296	1	WIRE TRAY, "J" HANDLE
	10	25212	1	SWITCH SUB-ASSEMBLY
NOT SHOWN	11	26526	1	CABLE, TRIGGER, GEN 4 PISTOL
	12	26276	1	"D" / "J" HANDLE
	13	26206	6	SCREW, BHSC 10-32 X .375, STEEL
	14	26239	1	"J" HANDLE PLUG
	15	25745	6	SCREW, BHSC 4-40 STEEL, BLACK OXIDE
	16	26226	1	O-RING, LED COVER
	17	20534	1	3000 SERIAL/MODEL LABEL
	18	26223	1	LED COVER
	19	26277	1	END CAP, "J" HANDLE
	20	26280	1	TOOL CONNECTOR ASM., "J" HANDLE
	21	26228	4	SCREW, BHSC 10-32X1.50, STEEL, BLACK OXIDE
	22	28211	1	(4) LINE MALE/FEMALE JUMPER ASM.
	23	26525	1	PLUG 5/16"
	24	SEE CHART	1	GEAR CASE COVER
	25	26319	3	SCREW, BHSC 6-32 X .188, 18-8 SS
	26	26897	1	CHOOSE REACTION BAR
	27	26243	1	RETAINING RING, SPIRAL, Ø2.864 X Ø2.464 X .078
NOT SHOWN	28	27464	A/R	TWISTED WAXED LINEN TWINE
	29	29336	1	TID BOARD WIRE INSULATOR
	30	29335	3	STANDOFF, M-F, 4-40 X 3/16, SS
	31	31410	1	GROUND WIRE ASSEMBLY, 18 AWG, 6000 & 7000 HT SERIES

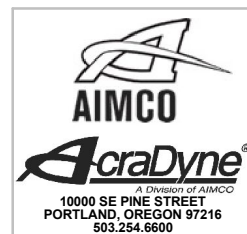
TOOL MODEL	GEAR BOX ASM.	GEAR CASE COVER
AEJ4A771000B	28110	26298
AEJ4A772500B	28111	26295



END CAP AND TOOL CONNECTOR REMOVED FOR CLARITY

- ◆ ASSEMBLY INSTRUCTIONS
- ◻ SUB-ASSEMBLY

- 1) GEARS & SPLINES: LUBRICATE WITH DOW CORNING MOLYKOTE BR2 PLUS GREASE.
- 2) BEARINGS: LUBRICATE WITH CHEVRON SR1 GREASE
- 3) O-RINGS: LUBRICATE WITH O-RING LUBE



DOCUMENT CONTROL
 PRINTED COPIES OF THIS DOCUMENT ARE CONSIDERED TO BE UNCONTROLLED DOCUMENTS. HOLDERS ARE RESPONSIBLE FOR VERIFYING THE CURRENT REVISION LEVEL WITH PURCHASING OR ENGINEERING PRIOR TO USE OR FABRICATION. THE CONTROLLED VERSION OF THIS DOCUMENT IS ELECTRONICALLY MAINTAINED.

PROPRIETARY AND CONFIDENTIAL
 THIS DRAWING CONTAINS INFORMATION STRICTLY CONFIDENTIAL TO ACRADYNE/AIMCO. IN THE ABSENCE OF EXPRESSED WRITTEN PERMISSION, ACRADYNE/AIMCO HAS LOANED THIS COPY WITH THE MUTUAL UNDERSTANDING THAT (A) IT WILL NOT BE USED FOR ANY PURPOSE OTHER THAN FOR THAT IN WHICH IT WAS PROVIDED, (B) THE DATA CONTAINED HEREIN WILL NOT BE DISCLOSED TO OTHERS, (C) IT WILL NOT BE REPRODUCED, AND (D) IT WILL BE RETURNED TO ACRADYNE/AIMCO IMMEDIATELY UPON DEMAND.

UNLESS OTHERWISE SPECIFIED, DIMENSIONS ARE IN INCHES
 DIMENSIONS AND TOLERANCING PER ANSI Y14.5 SURFACE ROUGHNESS PER ANSI Y14.36

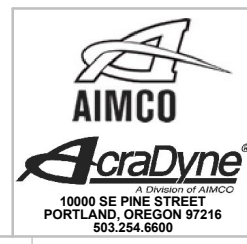
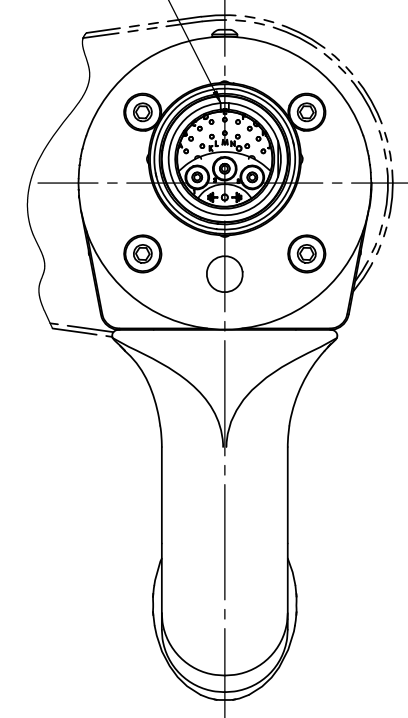
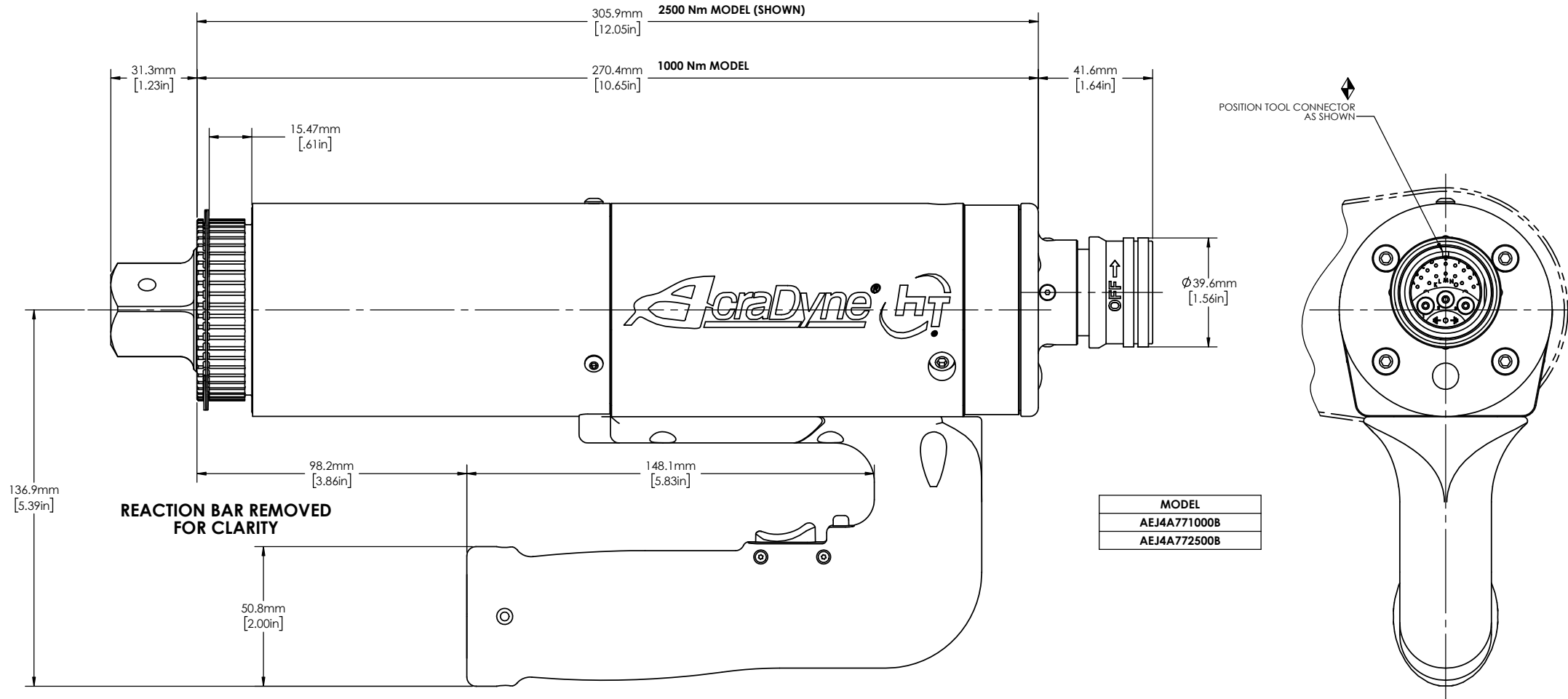
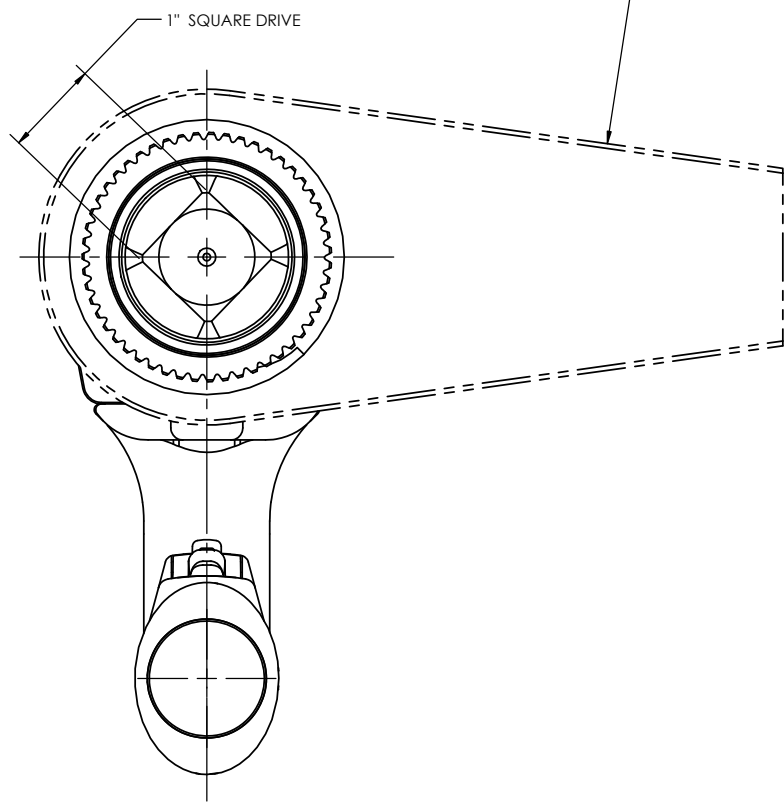
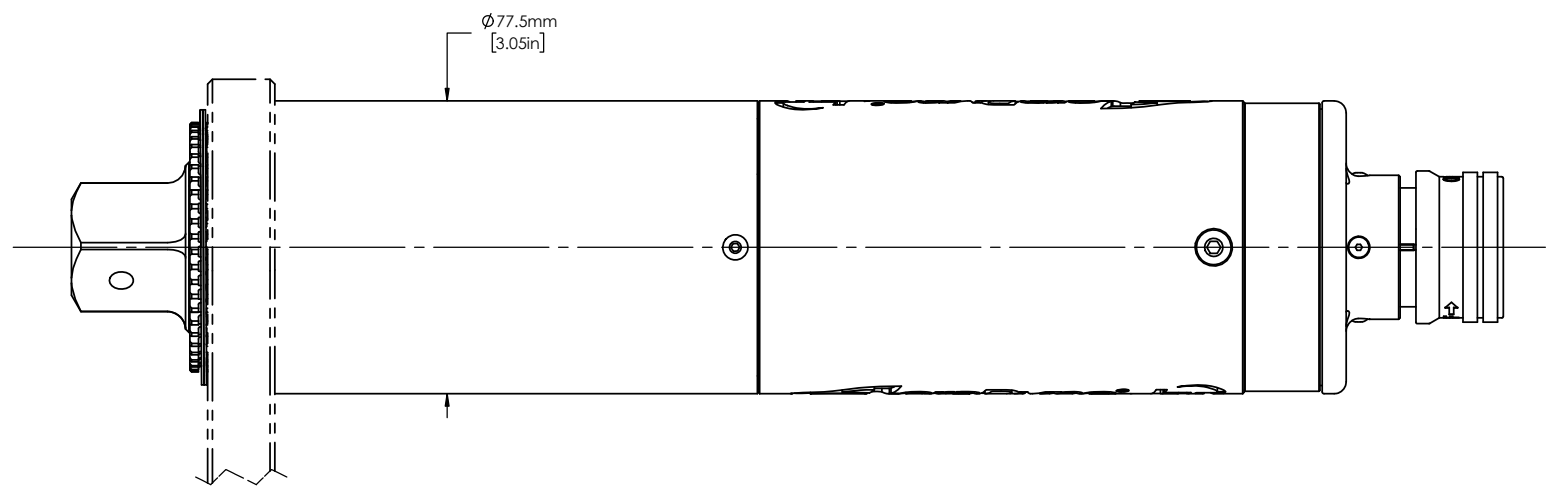
BLOCK TOLERANCING PER DECIMAL:
 X = ±.030 XX = ±.010 XXX = ±.005 XXXX = ±.0005
 ANGLE = ±0° 30'

REMOVE BURRS AND SHARP EDGES: R.015 MAX MACHINE SURFACE FINISH: 125 RMS OR BETTER

DRAWINGS AND TECHNICAL DOCUMENTS CONTROLLED BY:
ACRADYNE MECHANICAL ENGINEERING

"J" HANDLE NUTRUNNER 7000 SERIES

SIZE	PART / DRAWING NUMBER	REVISION
D	AEJ4A77_00B	E
SCALE 1:2	DO NOT SCALE DRAWING	SHEET 1 OF 2



DOCUMENT CONTROL
PRINTED COPIES OF THIS DOCUMENT ARE CONSIDERED TO BE UNCONTROLLED DOCUMENTS. HOLDERS ARE RESPONSIBLE FOR VERIFYING THE CURRENT REVISION LEVEL WITH PURCHASING OR ENGINEERING PRIOR TO USE OR FABRICATION. THE CONTROLLED VERSION OF THIS DOCUMENT IS ELECTRONICALLY MAINTAINED.

PROPRIETARY AND CONFIDENTIAL
THIS DRAWING CONTAINS INFORMATION STRICTLY CONFIDENTIAL TO ACRADYNE/AIMCO. IN THE ABSENCE OF EXPRESSED WRITTEN PERMISSION, ACRADYNE/AIMCO HAS LOANED THIS COPY WITH THE MUTUAL UNDERSTANDING THAT (A) IT WILL NOT BE USED FOR ANY PURPOSE OTHER THAN FOR THAT IN WHICH IT WAS PROVIDED, (B) THE DATA CONTAINED HEREIN WILL NOT BE DISCLOSED TO OTHERS, (C) IT WILL NOT BE REPRODUCED, AND (D) IT WILL BE RETURNED TO ACRADYNE/AIMCO IMMEDIATELY UPON DEMAND.

UNLESS OTHERWISE SPECIFIED, DIMENSIONS ARE IN INCHES
DIMENSIONS AND TOLERANCING PER ANSI Y14.5
SURFACE ROUGHNESS PER ANSI Y14.36

BLOCK TOLERANCING PER DECIMAL:
X = ±.030 XX = ±.010 XXX = ±.005 XXXX = ±.0005
ANGLE = ±0° 30'

REMOVE BURRS AND SHARP EDGES: R.015 MAX
MACHINE SURFACE FINISH: 125 RMS OR BETTER

DRAWINGS AND TECHNICAL DOCUMENTS CONTROLLED BY:
ACRADYNE MECHANICAL ENGINEERING

AUTHOR:

"J" HANDLE NUTRUNNER
7000 SERIES

SIZE	PART / DRAWING NUMBER	REVISION
D	AEJ4A77_00B	E
SCALE: 1:1	DO NOT SCALE DRAWING	SHEET 2 OF 2