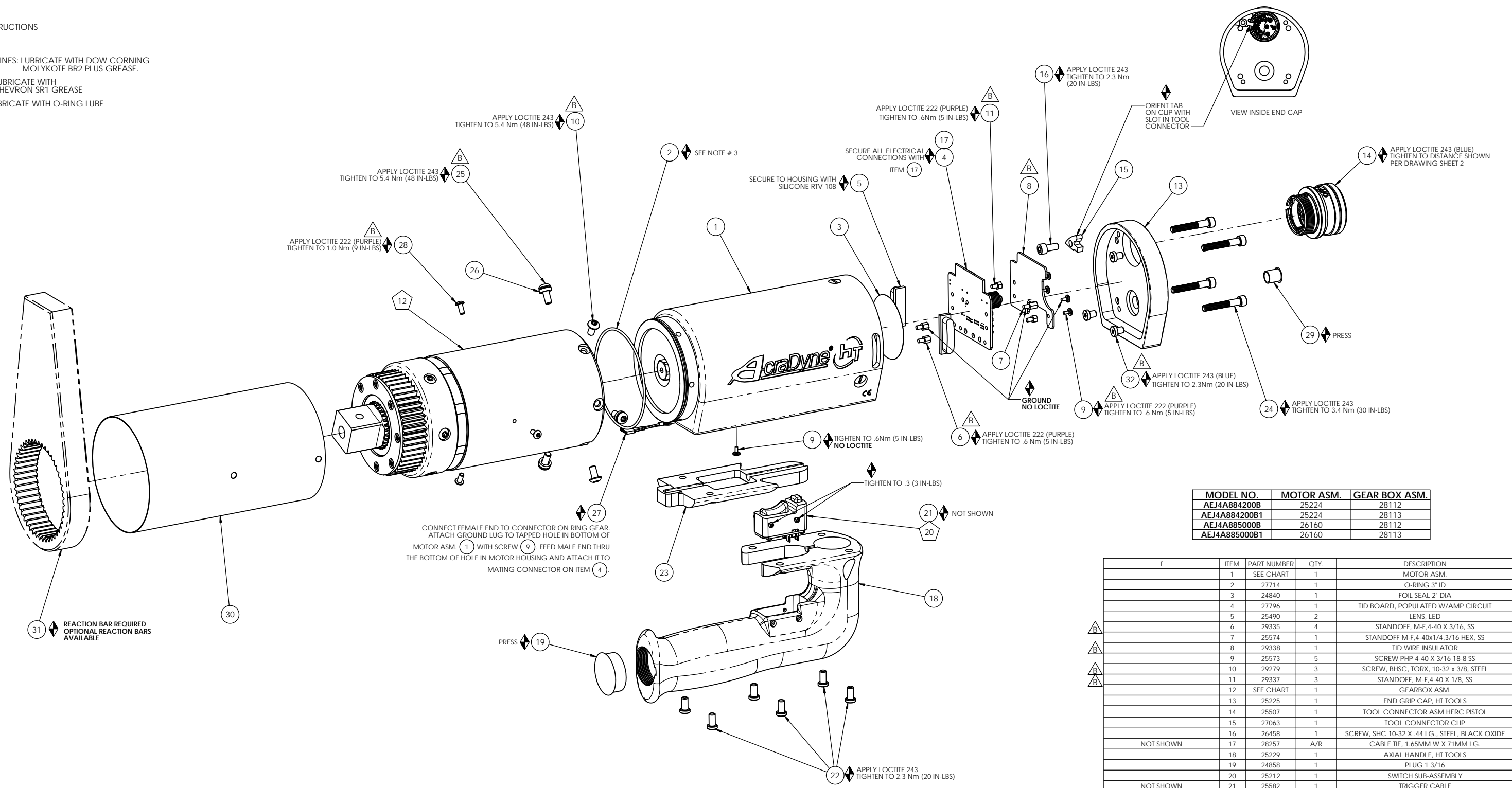


◆ ASSEMBLY INSTRUCTIONS

◇ SUB-ASSEMBLY

- 1) GEARS & SPLINES: LUBRICATE WITH DOW CORNING MOLYKOTE BR2 PLUS GREASE.
- 2) BEARINGS: LUBRICATE WITH CHEVRON SR1 GREASE
- 3) O-RINGS: LUBRICATE WITH O-RING LUBE



CONNECT FEMALE END TO CONNECTOR ON RING GEAR. ATTACH GROUND LUG TO TAPPED HOLE IN BOTTOM OF MOTOR ASM. (1) WITH SCREW (9) FEED MALE END THRU THE BOTTOM OF HOLE IN MOTOR HOUSING AND ATTACH IT TO MATING CONNECTOR ON ITEM (4)

MODEL NO.	MOTOR ASM.	GEAR BOX ASM.
AEJ4A884200B	25224	28112
AEJ4A884200B1	25224	28113
AEJ4A885000B	26160	28112
AEJ4A885000B1	26160	28113

f	ITEM	PART NUMBER	QTY.	DESCRIPTION
	1	SEE CHART	1	MOTOR ASM.
	2	27714	1	O-RING 3" ID
	3	24840	1	FOIL SEAL 2" DIA
	4	27796	1	TID BOARD, POPULATED W/AMP CIRCUIT
	5	25490	2	LENS, LED
	6	29335	4	STANDOFF, M-F, 4-40 X 3/16, SS
	7	25574	1	STANDOFF M-F, 4-40x1/4, 3/16 HEX, SS
	8	29338	1	TID WIRE INSULATOR
	9	25573	5	SCREW PHP 4-40 X 3/16 18-8 SS
	10	29279	3	SCREW, BHSC, TORX, 10-32 x 3/8, STEEL
	11	29337	3	STANDOFF, M-F, 4-40 X 1/8, SS
	12	SEE CHART	1	GEARBOX ASM.
	13	25225	1	END GRIP CAP, HT TOOLS
	14	25507	1	TOOL CONNECTOR ASM HERC PISTOL
	15	27063	1	TOOL CONNECTOR CLIP
	16	26458	1	SCREW, SHC 10-32 X .44 LG., STEEL, BLACK OXIDE
	17	28257	A/R	CABLE TIE, 1.65MM W X 71MM LG.
	18	25229	1	AXIAL HANDLE, HT TOOLS
	19	24858	1	PLUG 1 3/16
	20	25212	1	SWITCH SUB-ASSEMBLY
	21	25582	1	TRIGGER CABLE
	22	25569	6	SCREW LHCS 10-32 X 3/8 18-8 SS
	23	25232	1	HT TOOL AXIAL GRIP SPACER
	24	25568	4	SHC 10-32 x 1.25 BLK OXIDE
	25	29284	3	SCREW, BHSC, TORX, 10-32 X 1/2, STEEL
	26	25564	3	WASHER SHIM .093THK. 25ID .375OD
	27	28211	1	(4) LINE MALE/FEMALE JUMPER ASM.
	28	25218	3	SCREW, BHSC, 6-32 X 5/16, SS
	29	25579	1	PLUG 3/8"
	30	25284	1	HT TOOL TRANSDUCER SLEEVE
	31	26898	1	CHOOSE REACTION BAR
	32	24859	3	LHSC 10-32 X 1/4 BLK OXIDE



DOCUMENT CONTROL
PRINTED COPIES OF THIS DOCUMENT ARE CONSIDERED TO BE UNCONTROLLED DOCUMENTS. HOLDERS ARE RESPONSIBLE FOR VERIFYING THE CURRENT REVISION LEVEL WITH PURCHASING OR ENGINEERING PRIOR TO USE OR FABRICATION. THE CONTROLLED VERSION OF THIS DOCUMENT IS ELECTRONICALLY MAINTAINED.

PROPRIETARY AND CONFIDENTIAL
THIS DRAWING CONTAINS INFORMATION STRICTLY CONFIDENTIAL TO ACRADYNE/AIMCO. IN THE ABSENCE OF EXPRESSED WRITTEN PERMISSION, ACRADYNE/AIMCO HAS LOANED THIS COPY WITH THE MUTUAL UNDERSTANDING THAT (A) IT WILL NOT BE USED FOR ANY PURPOSE OTHER THAN FOR THAT IN WHICH IT WAS PROVIDED, (B) THE DATA CONTAINED HEREIN WILL NOT BE DISCLOSED TO OTHERS, (C) IT WILL NOT BE REPRODUCED, AND (D) IT WILL BE RETURNED TO ACRADYNE/AIMCO IMMEDIATELY UPON DEMAND.

UNLESS OTHERWISE SPECIFIED, DIMENSIONS ARE IN INCHES
DIMENSIONS AND TOLERANCING PER ANSI Y14.5
SURFACE ROUGHNESS PER ANSI Y14.36

BLOCK TOLERANCING PER DECIMAL:
.X = ±.030 .XX = ±.010 .XXX = ±.005 .XXXX = ±.0005
ANGLE = ±0°30'

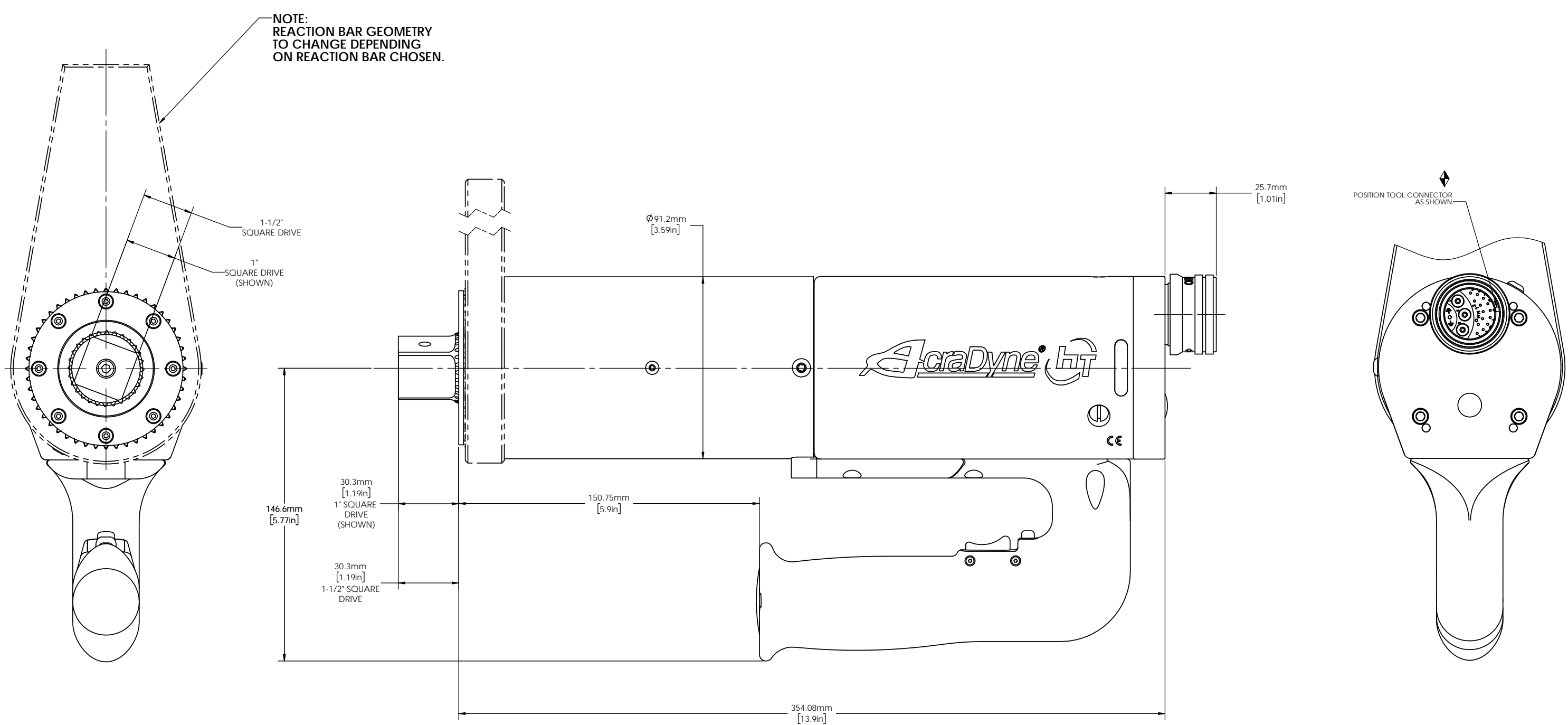
REMOVE BURRS AND SHARP EDGES: R.015 MAX
MACHINE SURFACE FINISH: 125 RMS OR BETTER

DRAWINGS AND TECHNICAL DOCUMENTS CONTROLLED BY:
ACRADYNE MECHANICAL ENGINEERING

AEJ4A88__B_
"J" HANDLE NUTRUNNER
8000 SERIES

SIZE	PART / DRAWING NUMBER	REVISION
D	AEJ4A88__B_	B

SCALE: 2:3 DO NOT SCALE DRAWING SHEET 1 OF 2



MODEL NO.	SQUARE DRIVE
AEJ4A884200B	1-1/2"
AEJ4A884200B1	1"
AEJ4A885000B	1-1/2"
AEJ4A885000B1	1"



DOCUMENT CONTROL
PRINTED COPIES OF THIS DOCUMENT ARE CONSIDERED TO BE UNCONTROLLED DOCUMENTS. HOLDERS ARE RESPONSIBLE FOR VERIFYING THE CURRENT REVISION LEVEL WITH PURCHASING OR ENGINEERING PRIOR TO USE OR FABRICATION. THE CONTROLLED VERSION OF THIS DOCUMENT IS ELECTRONICALLY MAINTAINED.

PROPRIETARY AND CONFIDENTIAL
THIS DRAWING CONTAINS INFORMATION STRICTLY CONFIDENTIAL TO ACRADYNE/AIMCO. IN THE ABSENCE OF EXPRESSED WRITTEN PERMISSION, ACRADYNE/AIMCO HAS LOANED THIS COPY WITH THE MUTUAL UNDERSTANDING THAT (A) IT WILL NOT BE USED FOR ANY PURPOSE OTHER THAN FOR THAT IN WHICH IT WAS PROVIDED, (B) THE DATA CONTAINED HEREIN WILL NOT BE DISCLOSED TO OTHERS, (C) IT WILL NOT BE REPRODUCED, AND (D) IT WILL BE RETURNED TO ACRADYNE/AIMCO IMMEDIATELY UPON DEMAND.

UNLESS OTHERWISE SPECIFIED, DIMENSIONS ARE IN INCHES
DIMENSIONS AND TOLERANCING PER ANSI Y14.5
SURFACE ROUGHNESS PER ANSI Y14.36

BLOCK TOLERANCING PER DECIMAL:
.X = ±.030 .XX = ±.010 .XXX = ±.005 .XXXX = ±.0005
ANGLE = ±0° 30'

REMOVE BURRS AND SHARP EDGES: R.015 MAX
MACHINE SURFACE FINISH: 125 RMS OR BETTER

DRAWINGS AND TECHNICAL DOCUMENTS CONTROLLED BY:
ACRADYNE MECHANICAL ENGINEERING

"J" HANDLE NUTRUNNER
8000 SERIES

SIZE	PART / DRAWING NUMBER	REVISION
D	AEJ4A88 _ _ _ B	B

SCALE: 1:1 DO NOT SCALE DRAWING SHEET 2 OF 2