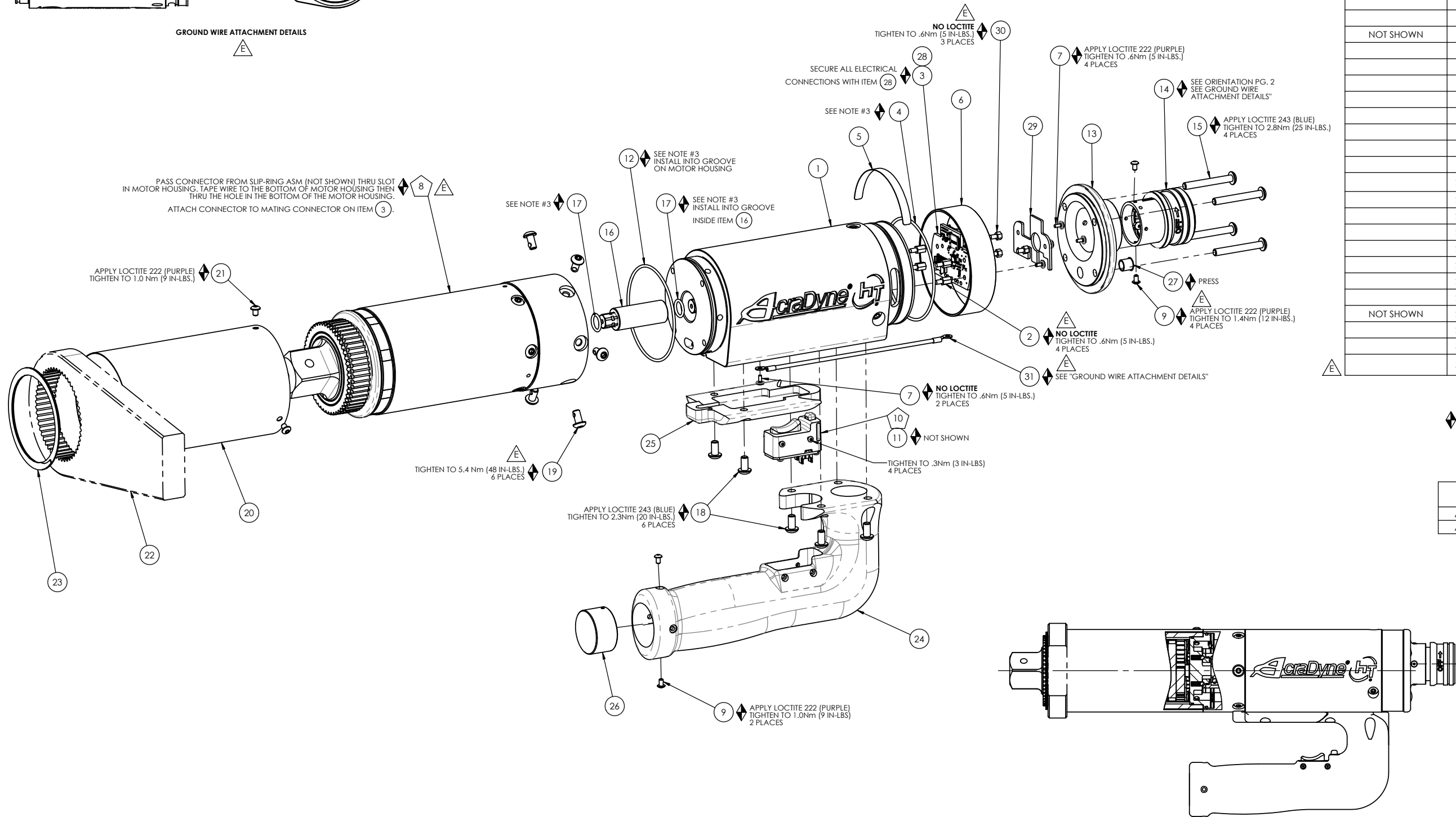


GROUND WIRE ATTACHMENT DETAILS



COMMENTS	ITEM NO.	PART NUMBER	QTY.	DESCRIPTION
	1	26212	1	MOTOR ASM., 7000 SERIES
	2	25574	4	STANDOFF M-F, 4-40x1/4, 3/16 HEX, SS
	3	27785	1	TID BOARD, POPULATED W/O AMP CIRCUIT
	4	26226	1	O-RING, LED COVER
	5	20534	1	3000 SERIAL/MODEL LABEL
	6	26223	1	LED COVER
	7	25573	7	SCREW PHP 4-40 X 3/16 18-8 SS
	8	SEE CHART	1	GEARBOX/CLUTCH ASM., 7000-SERIES
	9	25745	7	SCREW, BHSC 4-40 STEEL, BLACK OXIDE
	10	25212	1	SWITCH SUB-ASSEMBLY
NOT SHOWN	11	26526	1	TRIGGER CABLE ASM.
	12	26227	1	O-RING, MOTOR HOUSING
	13	26277	1	END CAP, "J" HANDLE
	14	26280	1	TOOL CONNECTOR ASM., "J" HANDLE
	15	26228	4	SCREW, BHSC 10-32X1.50, STEEL, BLACK OXIDE
	16	27977	1	SLIP RING PINION ADAPTOR, CLUTCH
	17	26299	2	O-RING, PINION
	18	26206	6	SCREW, BHSC 10-32 X .375, STEEL
	19	29279	6	SCREW, BHSC, 10-32 X 3/8, TORX HEAD, NYLON PELL-IT, STEEL
	20	SEE CHART	1	GEAR CASE COVER
	21	26319	3	SCREW, BHSC 6-32 X .188, 18-8 SS
	22	26897	1	CHOOSE REACTION BAR
	23	26243	1	RETAINING RING, SPIRAL, Ø2.864 X Ø2.464 X .078
	24	26276	1	"D" / "J" HANDLE
	25	26296	1	WIRE TRAY, "J" HANDLE
	26	26239	1	"J" HANDLE PLUG
	27	26525	1	PLUG 5/16"
NOT SHOWN	28	27464	A/R	TWISTED WAXED LINEN TWINE
	29	29336	1	TID BOARD WIRE INSULATOR
	30	29337	3	STANDOFF, M-F, 4-40 X 1/8, SS
	31	31410	1	GROUND WIRE ASSEMBLY, 18 AWG, 6000 & 7000 HT SERIES

NOTE: SEE WORK INSTRUCTION DOCUMENT "W2047" FOR COMPLETE SLIP RING ASSEMBLY INSTRUCTIONS.

MODEL NO.	GEARBOX/CLUTCH ASM.	GEAR CASE COVER
AEJ4B771000B	31777	26298
AEJ4B772500B	31797	26295

- ◆ ASSEMBLY INSTRUCTIONS
- ◊ SUB-ASSEMBLY
- 1) GEARS & SPLINES: LUBRICATE WITH DOW CORNING MOLYKOTE BR2 PLUS GREASE.
- 2) BEARINGS: LUBRICATE WITH CHEVRON SR1 GREASE
- 3) O-RINGS: LUBRICATE WITH O-RING LUBE



DOCUMENT CONTROL
 PRINTED COPIES OF THIS DOCUMENT ARE CONSIDERED TO BE UNCONTROLLED DOCUMENTS. HOLDERS ARE RESPONSIBLE FOR VERIFYING THE CURRENT REVISION LEVEL WITH PURCHASING OR ENGINEERING PRIOR TO USE OR FABRICATION. THE CONTROLLED VERSION OF THIS DOCUMENT IS ELECTRONICALLY MAINTAINED.

PROPRIETARY AND CONFIDENTIAL
 THIS DRAWING CONTAINS INFORMATION STRICTLY CONFIDENTIAL TO ACRADYNE/AIMCO. IN THE ABSENCE OF EXPRESSED WRITTEN PERMISSION, ACRADYNE/AIMCO HAS LOANED THIS COPY WITH THE MUTUAL UNDERSTANDING THAT (A) IT WILL NOT BE USED FOR ANY PURPOSE OTHER THAN FOR THAT IN WHICH IT WAS PROVIDED, (B) THE DATA CONTAINED HEREIN WILL NOT BE DISCLOSED TO OTHERS, (C) IT WILL NOT BE REPRODUCED, AND (D) IT WILL BE RETURNED TO ACRADYNE/AIMCO IMMEDIATELY UPON DEMAND.

UNLESS OTHERWISE SPECIFIED, DIMENSIONS ARE IN INCHES
 DIMENSIONS AND TOLERANCING PER ANSI Y14.5
 SURFACE ROUGHNESS PER ANSI Y14.36

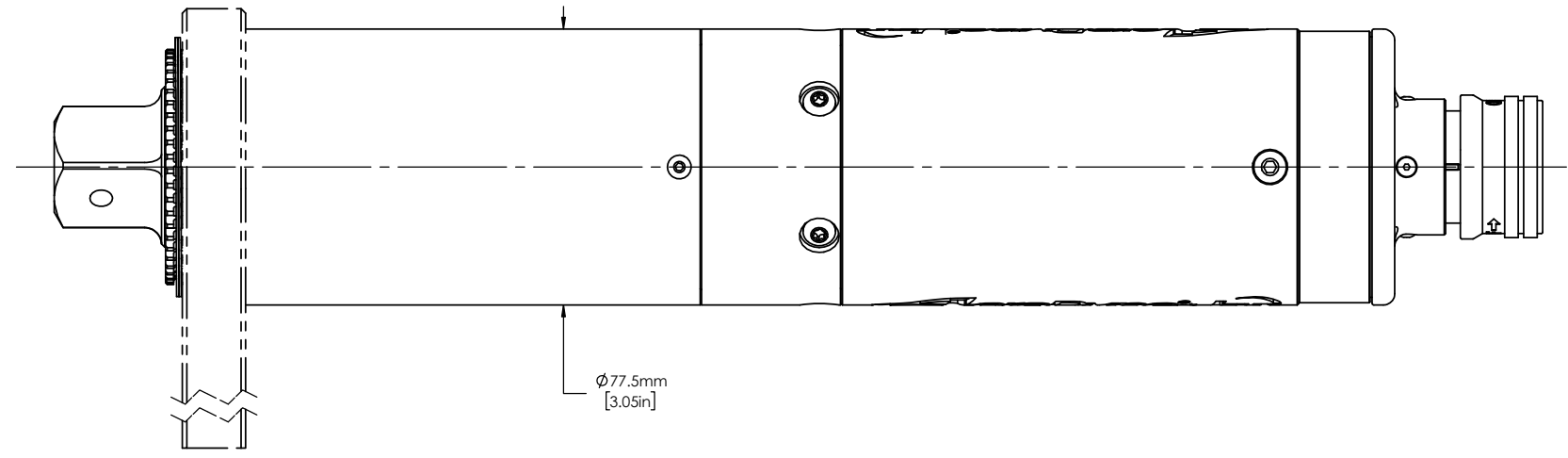
BLOCK TOLERANCING PER DECIMAL:
 .X = ±.030 .XX = ±.010 .XXX = ±.005 .XXXX = ±.0005
 ANGLE = ±0°30'

REMOVE BURRS AND SHARP EDGES: R.015 MAX
 MACHINE SURFACE FINISH: 125 RMS OR BETTER

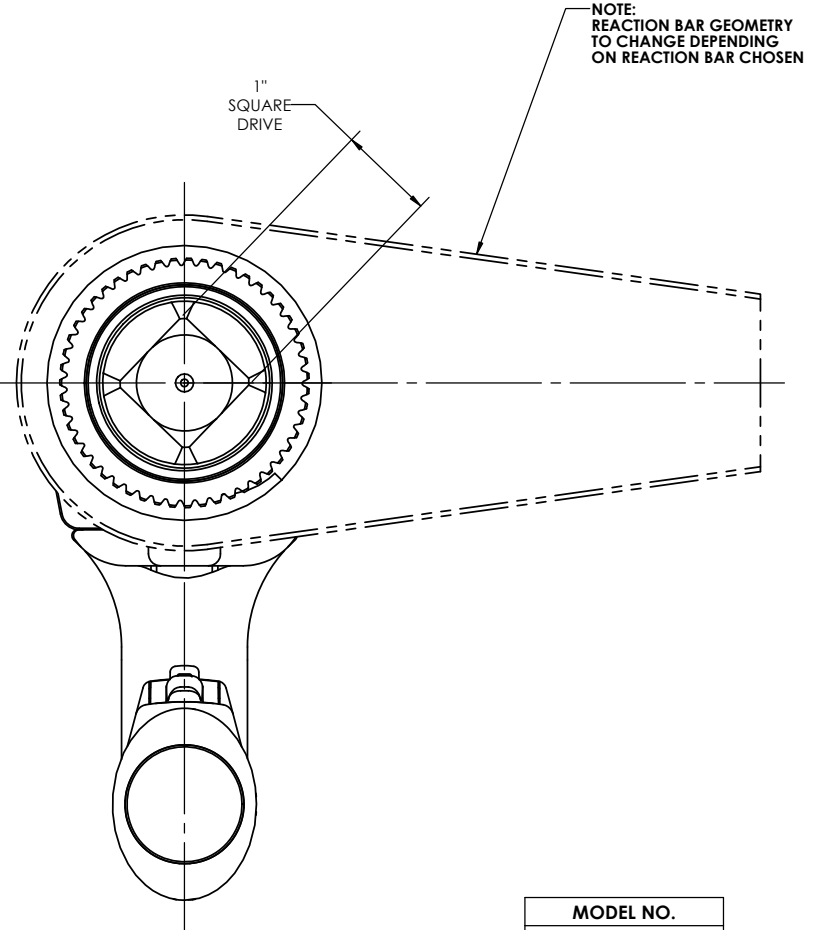
DRAWINGS AND TECHNICAL DOCUMENTS CONTROLLED BY:
ACRADYNE MECHANICAL ENGINEERING

"J" HANDLE NUTRUNNER W/SLIP RING CLUTCH 7000 SERIES

SIZE D	PART / DRAWING NUMBER AEJ4B77_00B	REVISION E
SCALE: 2:3	DO NOT SCALE DRAWING	SHEET 1 OF 2

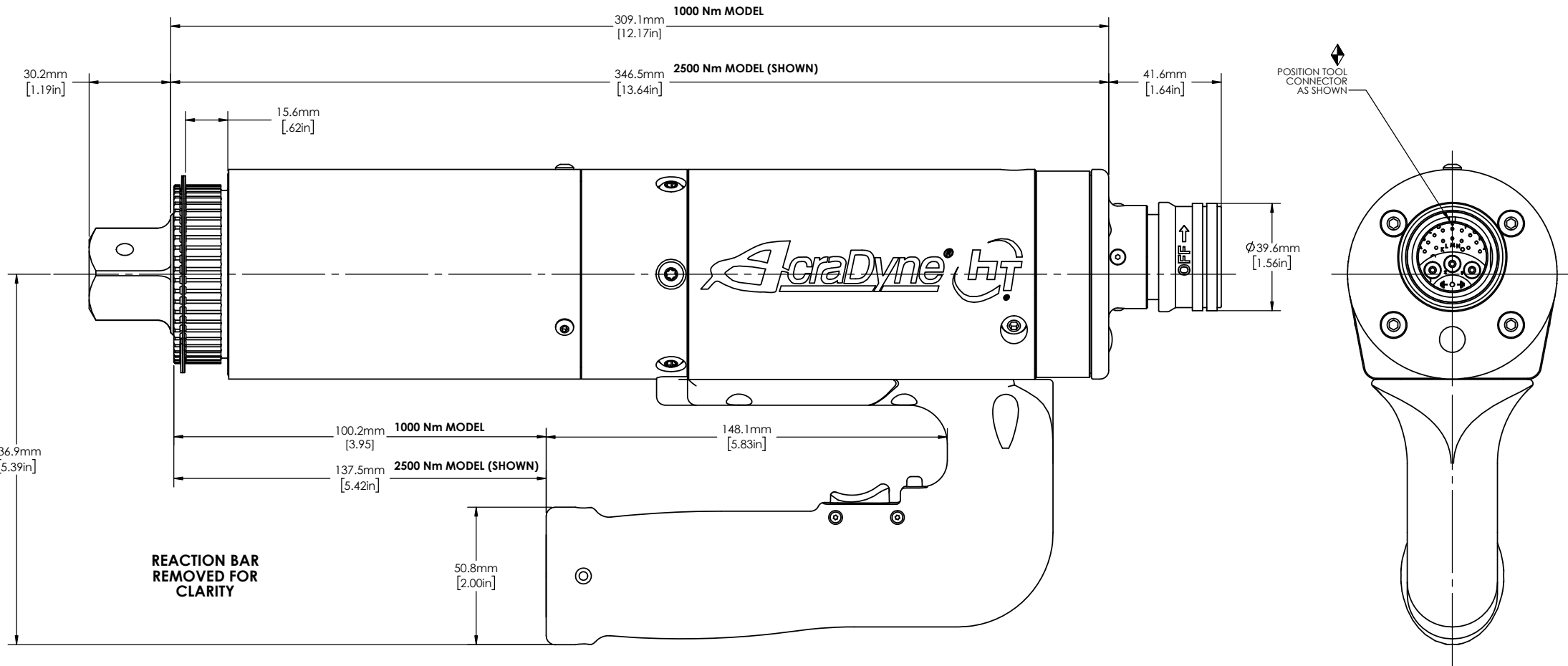


Ø77.5mm
[3.05in]



1" SQUARE DRIVE

NOTE:
REACTION BAR GEOMETRY
TO CHANGE DEPENDING
ON REACTION BAR CHOSEN



1000 Nm MODEL

309.1mm
[12.17in]

2500 Nm MODEL (SHOWN)

346.5mm
[13.64in]

41.6mm
[1.64in]

30.2mm
[1.19in]

15.6mm
[.62in]

POSITION TOOL
CONNECTOR
AS SHOWN

Ø39.6mm
[1.56in]

1000 Nm MODEL

100.2mm
[3.95]

2500 Nm MODEL (SHOWN)

137.5mm
[5.42in]

148.1mm
[5.83in]

REACTION BAR
REMOVED FOR
CLARITY

50.8mm
[2.00in]

MODEL NO.
AEJ4B771000B
AEJ4B772500B



DOCUMENT CONTROL
PRINTED COPIES OF THIS DOCUMENT ARE CONSIDERED TO BE UNCONTROLLED DOCUMENTS. HOLDERS ARE RESPONSIBLE FOR VERIFYING THE CURRENT REVISION LEVEL WITH PURCHASING OR ENGINEERING PRIOR TO USE OR FABRICATION. THE CONTROLLED VERSION OF THIS DOCUMENT IS ELECTRONICALLY MAINTAINED.

PROPRIETARY AND CONFIDENTIAL
THIS DRAWING CONTAINS INFORMATION STRICTLY CONFIDENTIAL TO ACRADYNE/AIMCO. IN THE ABSENCE OF EXPRESSED WRITTEN PERMISSION, ACRADYNE/AIMCO HAS LOANED THIS COPY WITH THE MUTUAL UNDERSTANDING THAT (A) IT WILL NOT BE USED FOR ANY PURPOSE OTHER THAN FOR THAT IN WHICH IT WAS PROVIDED, (B) THE DATA CONTAINED HEREIN WILL NOT BE DISCLOSED TO OTHERS, (C) IT WILL NOT BE REPRODUCED, AND (D) IT WILL BE RETURNED TO ACRADYNE/AIMCO IMMEDIATELY UPON DEMAND.

UNLESS OTHERWISE SPECIFIED, DIMENSIONS ARE IN INCHES
DIMENSIONS AND TOLERANCING PER ANSI Y14.5
SURFACE ROUGHNESS PER ANSI Y14.36

BLOCK TOLERANCING PER DECIMAL:
.X = ±.030 .XX = ±.010 .XXX = ±.005 .XXXX = ±.0005
ANGLE = ±0°30'

REMOVE BURRS AND SHARP EDGES: R.015 MAX
MACHINE SURFACE FINISH: 125 RMS OR BETTER

DRAWINGS AND TECHNICAL DOCUMENTS CONTROLLED BY:
ACRADYNE MECHANICAL ENGINEERING

**"J" HANDLE NUTRUNNER
W/SLIP RING CLUTCH
7000 SERIES**

SIZE	PART / DRAWING NUMBER	REVISION
D	AEJ4B77_00B	E
SCALE 1:8	DO NOT SCALE DRAWING	SHEET 2 OF 2