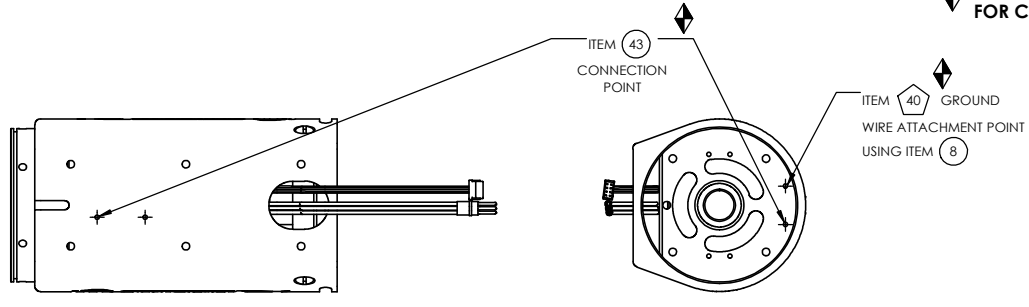


COMMENTS	ITEM NO.	PART NUMBER	QTY.	DESCRIPTION
	1	30997	1	MOTOR ASM.
	2	24840	1	FOIL SEAL 2" DIA
	3	29335	4	STANDOFF, M-F, 4-40 X 3/16, SS
	4	27797	1	TID BOARD, POPULATED W/O AMP CIRCUIT
	5	25490	2	LENS, LED, INJECTION MOLDED
	6	29337	3	STANDOFF, M-F, 4-40 X 1/8, SS
	7	29338	1	TID WIRE INSULATOR
	8	25573	7	SCREW PHP 4-40 X 3/16 18-8 SS
	9	25568	4	SHC 10-32 x 1.25 BLK OXIDE
	10	30338	1	GEARBOX ASSY, 729:1
	11	27978	1	SLIP RING INNER PLATE
	12	28278	1	SLIP RING OUTER PLATE SUB-ASM.
	13	28174	8	SPRING, COMPRESSION
	14	20105	8	DETENT BALL
	15	27714	2	O-RING 3" ID
SEE WORK INSTRUCTIONS	16	27983.007	1	SLIP RING SET
	17	27994	6	DOWEL PIN, Ø.0938 X .1875 LG., STEEL
	18	27993	6	SCREW, FHPM, 2-56, 18-8SS, PLAIN
	19	27953	1	O-RING, 70 DURO BUNA N, -042
	20	25745	2	SCREW, BHSC 4-40 STEEL, BLACK OXIDE
	21	28000	1	CABLE TIE-MOUNT
	22	24940	1	SCREW, FHSC 4-40 X .25 LG., STEEL, BLACK OXIDE
	23	28257	4	CABLE TIE, 1.65MM W X 71MM LG
	24	25969	2	BEARING, BALL, Ø42mm X Ø30mm X 7mm
	25	25961	1	BEARING RETAINER, INNER
	26	25962	1	BEARING RETAINER, OUTER
	27	27980	1	SLIP RING PINION ADAPTER
	28	26080	1	O-RING, LED LIGHT RING COVER
	29	25564	2	WASHER SHIM .093THK .25ID .375OD
	30	30289	1	RING GEAR COVER, 12,000Nm, 8000-SERIES
	31	29284	2	SCREW, BHSC, 10-32 X 1/2, TORX HEAD, NYLON PELL-IT, STEEL
	32	29279	10	SCREW, BHSC, 10-32 X 3/8, TORX HEAD, NYLON PELL-IT, STEEL
	33	29957	1	BRACKET, CUSTOM HOIST, J-HANDLE
	34	25984	1	TRANSDUCER WIRE TRAY
	35	29975	1	TRANSDUCER WIRE COVER, MODIFIED
	36	25229	1	AXIAL HANDLE, HT TOOLS
	37	25168	6	SCREW, SHC, 10-32 x 5/8, STEEL, BLACK OXIDE
	38	25212	1	SWITCH SUB-ASSEMBLY
NOT SHOWN	39	25582	1	TRIGGER CABLE
SEE DRAWING FOR DETAILS	40	28269	1	FAN CONVERSION KIT
	41	30330	1	CHOOSE REACTION BAR
	42	30302	1	RETAINING RING, SPIRAL, Ø3.792 X Ø 3.765 X .111
	43	31412	1	GROUND WIRE ASSEMBLY, 18 AWG, 8000 & 9000 HT SERIES
NOT SHOWN	44	24177	A/R	RTV 108, TRANSLUCENT

SEE WORK INSTRUCTION DOCUMENT "W2047" FOR COMPLETE ASSEMBLY INSTRUCTIONS.



GROUND WIRE ATTACHMENT DETAILS

- ◆ ASSEMBLY INSTRUCTIONS
- ◊ SUB-ASSEMBLY

- 1) GEARS & SPLINES: LUBRICATE WITH DOW CORNING MOLYKOTE BR2 PLUS GREASE.
- 2) BEARINGS: LUBRICATE WITH CHEVRON SR1 GREASE
- 3) O-RINGS: LUBRICATE WITH O-RING LUBE

CABLE ASSEMBLY TYPE IS CHOSEN IN ASSEMBLY 41.



DOCUMENT CONTROL
 PRINTED COPIES OF THIS DOCUMENT ARE CONSIDERED TO BE UNCONTROLLED DOCUMENTS. HOLDERS ARE RESPONSIBLE FOR VERIFYING THE CURRENT REVISION LEVEL WITH PURCHASING OR ENGINEERING PRIOR TO USE OR FABRICATION. THE CONTROLLED VERSION OF THIS DOCUMENT IS ELECTRONICALLY MAINTAINED.

PROPRIETARY AND CONFIDENTIAL
 THIS DRAWING CONTAINS INFORMATION STRICTLY CONFIDENTIAL TO ACRADYNE/AIMCO. IN THE ABSENCE OF EXPRESSED WRITTEN PERMISSION, ACRADYNE/AIMCO HAS LOANED THIS COPY WITH THE MUTUAL UNDERSTANDING THAT (A) IT WILL NOT BE USED FOR ANY PURPOSE OTHER THAN FOR THAT IN WHICH IT WAS PROVIDED, (B) THE DATA CONTAINED HEREIN WILL NOT BE DISCLOSED TO OTHERS, (C) IT WILL NOT BE REPRODUCED, AND (D) IT WILL BE RETURNED TO ACRADYNE/AIMCO IMMEDIATELY UPON DEMAND.

REVISION LEVEL	REVISION RELEASE DATE	DESCRIPTION OF CHANGES MADE TO PART	ECN #	AUTHOR/ APPROVAL

UNLESS OTHERWISE SPECIFIED, DIMENSIONS ARE IN INCHES
 DIMENSIONS AND TOLERANCING PER ANSI Y14.5 SURFACE ROUGHNESS PER ANSI Y14.36

BLOCK TOLERANCING PER DECIMAL:
 .X = ±.030 .XX = ±.010 .XXX = ±.005 .XXXX = ±.0005
 ANGLE = ±0° 30'

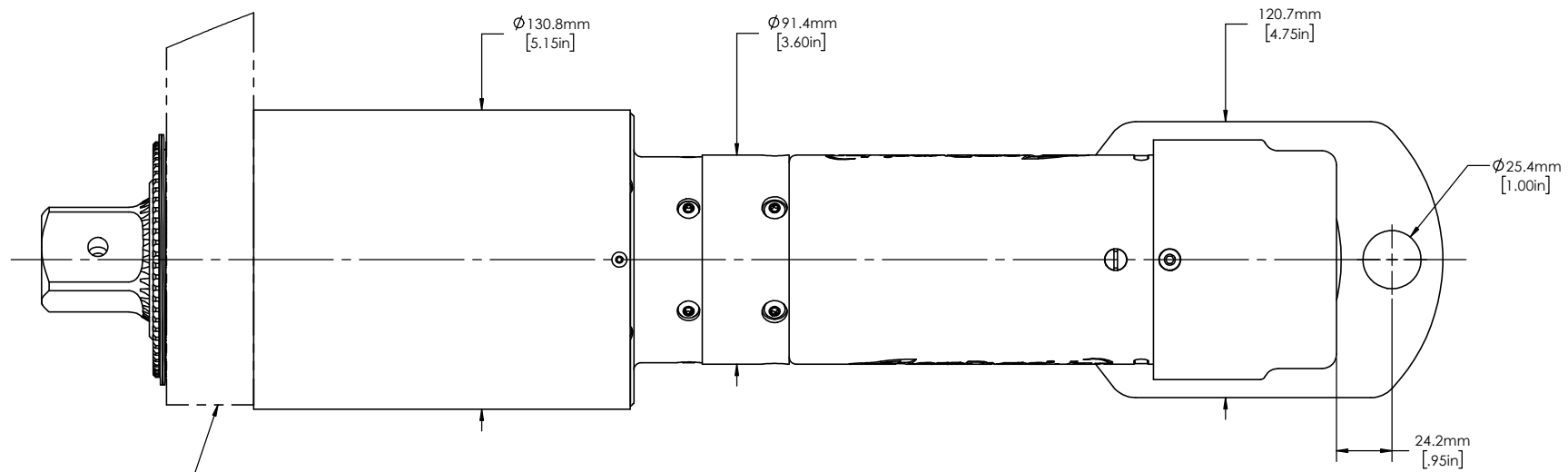
REMOVE BURRS AND SHARP EDGES: R.015 MAX MACHINE SURFACE FINISH: 125 RMS OR BETTER

DRAWINGS AND TECHNICAL DOCUMENTS CONTROLLED BY:
ACRADYNE MECHANICAL ENGINEERING

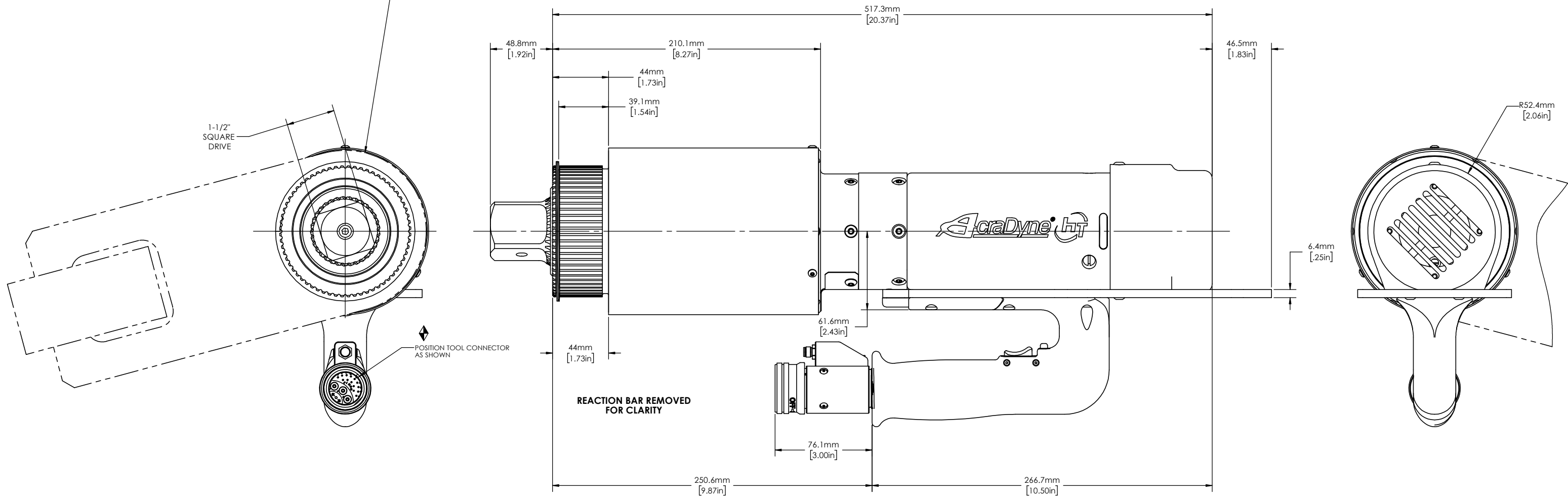
"J" HANDLE NUTRUNNER W/SLIP RING CLUTCH AND FAN KIT
8000 SERIES

SIZE **D** PART / DRAWING NUMBER **AEJ4B8X1200B** REVISION **C**

SCALE 2:3 DO NOT SCALE DRAWING SHEET 1 OF 2



NOTE:
REACTION BAR GEOMETRY
TO CHANGE DEPENDING
ON REACTION BAR CHOSEN.



REACTION BAR REMOVED
FOR CLARITY



DOCUMENT CONTROL
PRINTED COPIES OF THIS DOCUMENT ARE CONSIDERED TO BE UNCONTROLLED DOCUMENTS. HOLDERS ARE RESPONSIBLE FOR VERIFYING THE CURRENT REVISION LEVEL WITH PURCHASING OR ENGINEERING PRIOR TO USE OR FABRICATION. THE CONTROLLED VERSION OF THIS DOCUMENT IS ELECTRONICALLY MAINTAINED.

PROPRIETARY AND CONFIDENTIAL
THIS DRAWING CONTAINS INFORMATION STRICTLY CONFIDENTIAL TO ACRADYNE/AIMCO. IN THE ABSENCE OF EXPRESSED WRITTEN PERMISSION, ACRADYNE/AIMCO HAS LOANED THIS COPY WITH THE MUTUAL UNDERSTANDING THAT (A) IT WILL NOT BE USED FOR ANY PURPOSE OTHER THAN FOR THAT IN WHICH IT WAS PROVIDED, (B) THE DATA CONTAINED HEREIN WILL NOT BE DISCLOSED TO OTHERS, (C) IT WILL NOT BE REPRODUCED, AND (D) IT WILL BE RETURNED TO ACRADYNE/AIMCO IMMEDIATELY UPON DEMAND.

REVISION LEVEL	REVISION RELEASE DATE	DESCRIPTION OF CHANGES MADE TO PART	ECN #	AUTHOR/ APPROVAL

UNLESS OTHERWISE SPECIFIED,
DIMENSIONS ARE IN INCHES
DIMENSIONS AND TOLERANCING PER ANSI Y14.5
SURFACE ROUGHNESS PER ANSI Y14.36

BLOCK TOLERANCING PER DECIMAL:
X = ±0.30 XX = ±0.10 XXX = ±0.05 XXXX = ±0.005
ANGLE = ±0°30'

REMOVE BURRS AND SHARP EDGES: R.015 MAX
MACHINE SURFACE FINISH: 125 RMS OR BETTER

DRAWINGS AND TECHNICAL DOCUMENTS CONTROLLED BY:
ACRADYNE MECHANICAL ENGINEERING

**"J" HANDLE NUTRUNNER
W/SLIP RING CLUTCH AND
FAN KIT
8000-SERIES**

SIZE D	PART / DRAWING NUMBER AEJ4B8X1200B	REVISION C
SCALE 1:8	DO NOT SCALE DRAWING	SHEET 2 OF 2