

COMMENTS	ITEM NO.	PART NUMBER	QTY.	DESCRIPTION
	1	31452	1	MOTOR/FAN SUB-ASM., 12K Nm
	2	31536	1	OFFSET GEARBOX ASSEMBLY, 8100NM
	3	31540	1	GEARBOX/CLUTCH ASM., 8100Nm
	4	31535	1	TOOL CONNECTOR/HANDLE ADAPTER PLATE
	5	31533	1	TRANSDUCER WIRE COVER, 8100 Nm
	6	26276	1	"D" / "J" HANDLE
	7	20532	4	SCREW, 6-32x1/4 BUTTON SOC CAP
	8	31417	1	MALE RECEPTACLE CABLE ASSY, 3-PIN, 6.56FT, 2-PIN CONNECTOR
	9	31290	1	TOOL CONNECTOR ASSEMBLY, 17,000Nm
	10	31411	8	LIGHTPIPE, LED, PANEL MOUNT, CONVEX, .250" LENGTH
	11	31621	4	SCREW, SHC 10-32 X 1-3/8, STEEL, BLACK OXIDE
	12	31647	4	SCREW, BHSC, 1/4-20 X 1, STEEL, BLACK OXIDE
	13	25745	2	SCREW, BHSC 4-40 STEEL, BLACK OXIDE
	14	25131	2	SCREW, BHSC 4-40 X 5/8, BLK OXIDE
	15	25212	1	SWITCH SUB-ASSEMBLY
NOT SHOWN	16	25582	1	HT TOOL TRIGGER CABLE
	17	22141	1	SAFETY LABEL
	18	31317	1	LABEL, MODEL, SERIAL NUMBER AND DESCRIPTION
	19	25574	4	STANDOFF M-F, 4-40x1/4, 3/16 HEX, SS
	20	27785	1	TID BOARD, POPULATED W/O AMP CIRCUIT
	21	29336	1	TID BOARD WIRE INSULATOR
	22	29337	3	STANDOFF, M-F, 4-40 X 1/8, SS
	23	25573	6	SCREW PHP 4-40 X 3/16 18-8 SS
	24	25340	4	SCREW, SHC 1/4-20 X 1.25, STEEL, BLACK OXIDE
	25	27953	1	O-RING, 70 DURO BUNA N, -042
	26	30734	1	CONNECTOR, 2 POS, MALE PINS, MOLEX 70107-0001
NOT SHOWN	27	30738	2	CRIMP TERMINAL, CONNECTOR, MALE 22-24 AWG
	28	31496	1	FAN HOUSING, 80mm X 38mm FAN, 12,000Nm TOOL
	29	26206	4	SCREW, BHSC 10-32 X .375, STEEL
	30	26239	1	"J" HANDLE PLUG
	31	26636	1	GEAR CASE COVER
	32	26319	3	SCREW, BHSC 6-32 X .188, 18-8 SS
	33	26899	1	CHOOSE REACTION BAR
	34	26436	1	RETAINING RING, SPIRAL, Ø3.833 X Ø3.293 X .111
NOT SHOWN	35	24177	A/R	CLEAR SILICON, RTV 108
NOT SHOWN	36	24263	A/R	KAPTON TAPE, 1/2"
	37	25168	4	SCREW, SHC, 10-32 x 5/8, STEEL, BLACK OXIDE
	38	25271	A/R	SHIM, -.002
	39	25272	A/R	SHIM, -.005
	40	25273	A/R	SHIM, -.010
	41	26525	1	PLUG 5/16"
NOT SHOWN	42	28525	1	CABLE ASM., I/O ADAPTOR TO 3-SKT FEMALE CONN.



DOCUMENT CONTROL

PRINTED COPIES OF THIS DOCUMENT ARE CONSIDERED TO BE UNCONTROLLED DOCUMENTS. HOLDERS ARE RESPONSIBLE FOR VERIFYING THE CURRENT REVISION LEVEL WITH PURCHASING OR ENGINEERING PRIOR TO USE OR FABRICATION. THE CONTROLLED VERSION OF THIS DOCUMENT IS ELECTRONICALLY MAINTAINED.

PROPRIETARY AND CONFIDENTIAL

THIS DRAWING CONTAINS INFORMATION STRICTLY CONFIDENTIAL TO ACRADYNE/AMCO. IN THE ABSENCE OF EXPRESSED WRITTEN PERMISSION, ACRADYNE/AMCO HAS LOANED THIS COPY WITH THE MUTUAL UNDERSTANDING THAT (A) IT WILL NOT BE USED FOR ANY PURPOSE OTHER THAN FOR THAT IN WHICH IT WAS PROVIDED, (B) THE DATA CONTAINED HEREIN WILL NOT BE DISCLOSED TO OTHERS, (C) IT WILL NOT BE REPRODUCED, AND (D) IT WILL BE RETURNED TO ACRADYNE/AMCO IMMEDIATELY UPON DEMAND.

REVISION LEVEL	REVISION RELEASE DATE	DESCRIPTION OF CHANGES MADE TO PART	ECN #	AUTHOR/ APPROVAL
REVISION BLOCK				

UNLESS OTHERWISE SPECIFIED, DIMENSIONS ARE IN INCHES

DIMENSIONS AND TOLERANCING PER ANSI Y14.5 SURFACE ROUGHNESS PER ANSI Y14.36

BLOCK TOLERANCING PER DECIMAL:

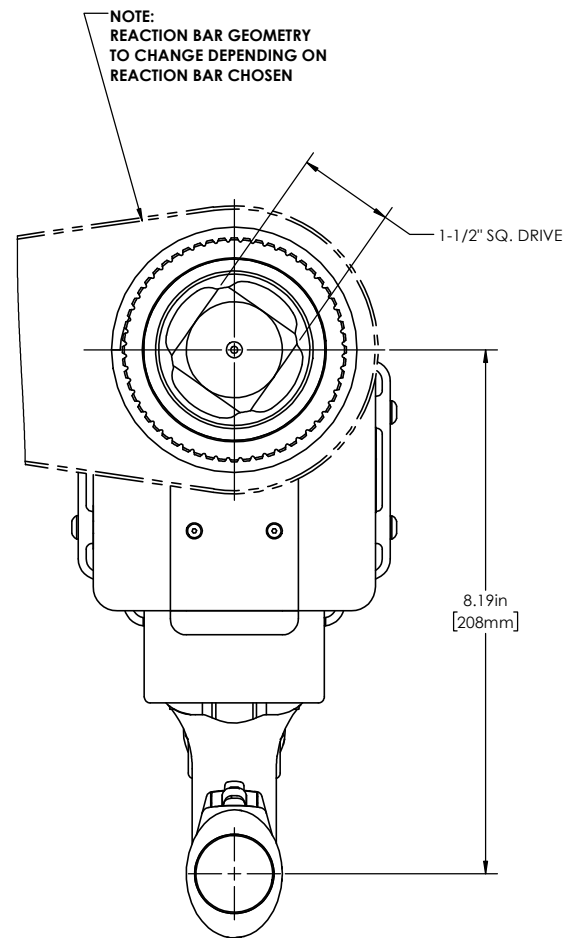
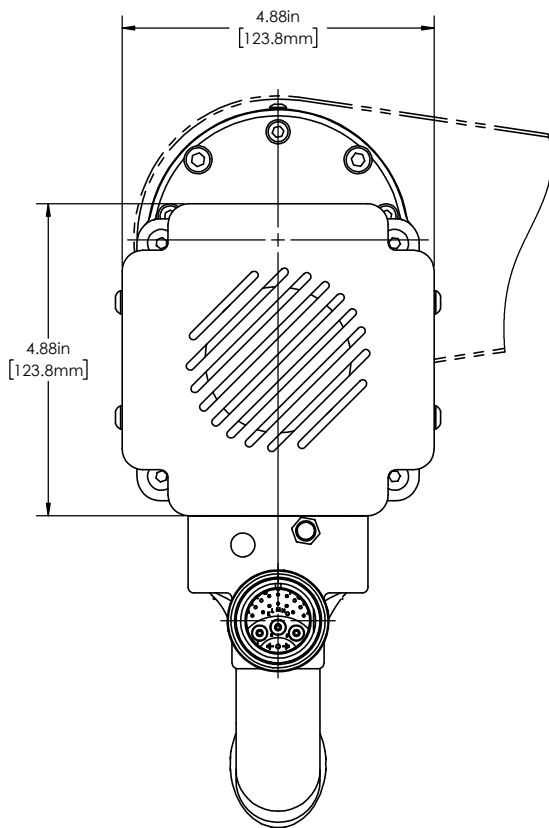
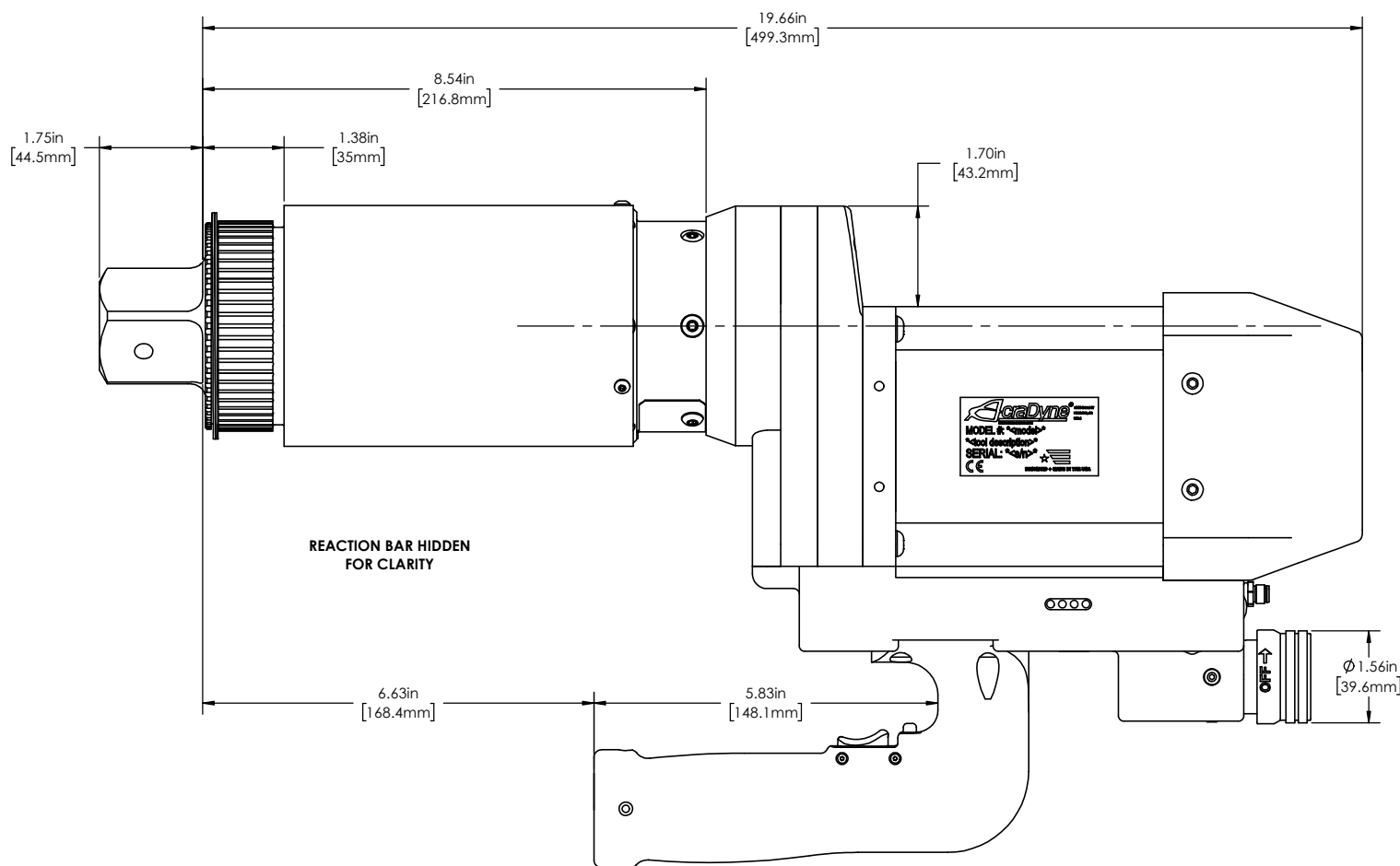
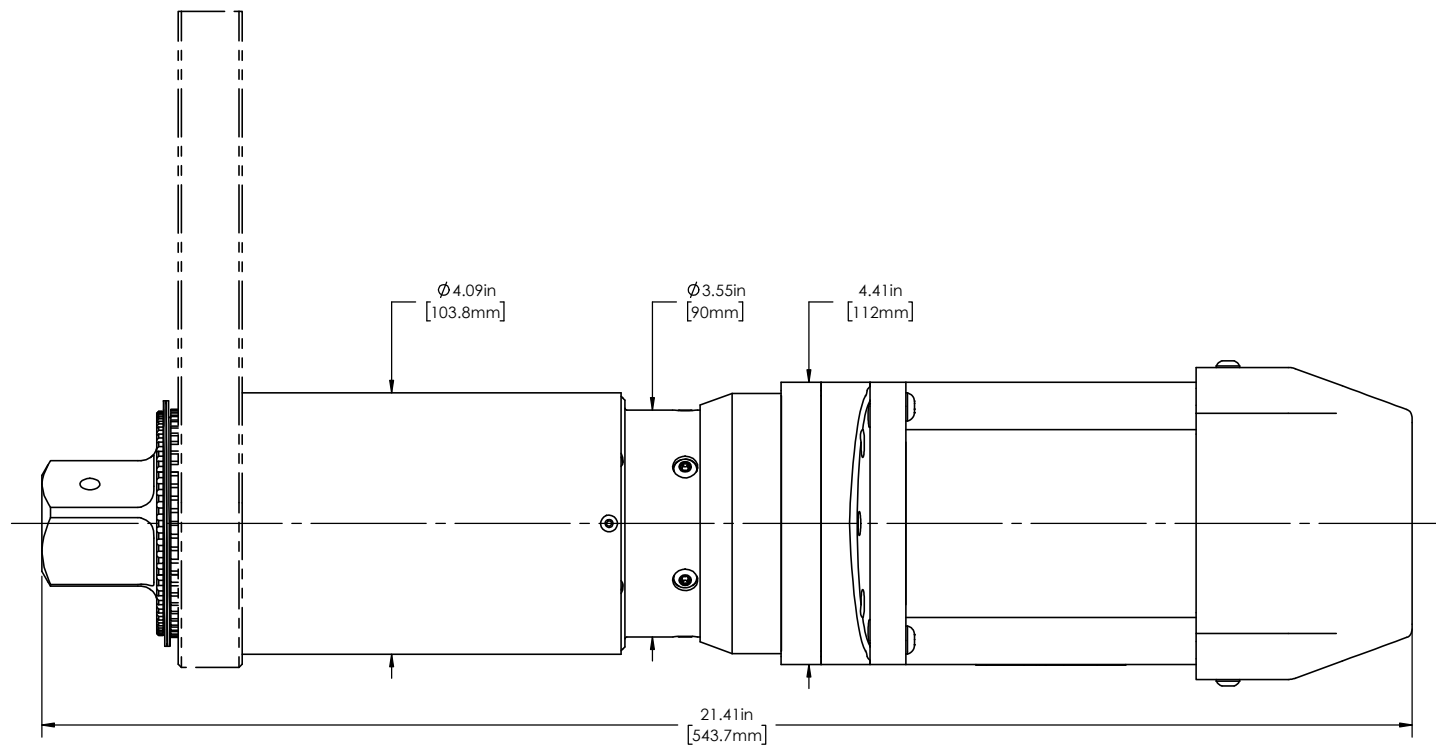
.X = ±.030 .XX = ±.010 .XXX = ±.005 .XXXX = ±.0005

ANGLE = ±0°30'

REMOVE BURRS AND SHARP EDGES: R.015 MAX MACHINE SURFACE FINISH: 125 RMS OR BETTER

DRAWINGS AND TECHNICAL DOCUMENTS CONTROLLED BY: ACRADYNE MECHANICAL ENGINEERING

"J" HANDLE NUTRUNNER, W/SLIPRING CLUTCH AND FAN KIT, 8100Nm		
SIZE	PART / DRAWING NUMBER	REVISION
D	AEJ4W998100B	B
SCALE 2:3	DO NOT SCALE DRAWING	SHEET 1 OF 2



DOCUMENT CONTROL
 PRINTED COPIES OF THIS DOCUMENT ARE CONSIDERED TO BE UNCONTROLLED DOCUMENTS. HOLDERS ARE RESPONSIBLE FOR VERIFYING THE CURRENT REVISION LEVEL WITH PURCHASING OR ENGINEERING PRIOR TO USE OR FABRICATION. THE CONTROLLED VERSION OF THIS DOCUMENT IS ELECTRONICALLY MAINTAINED.

PROPRIETARY AND CONFIDENTIAL
 THIS DRAWING CONTAINS INFORMATION STRICTLY CONFIDENTIAL TO ACRADYNE/AIMCO. IN THE ABSENCE OF EXPRESSED WRITTEN PERMISSION, ACRADYNE/AIMCO HAS LOANED THIS COPY WITH THE MUTUAL UNDERSTANDING THAT (A) IT WILL NOT BE USED FOR ANY PURPOSE OTHER THAN FOR THAT IN WHICH IT WAS PROVIDED, (B) THE DATA CONTAINED HEREIN WILL NOT BE DISCLOSED TO OTHERS, (C) IT WILL NOT BE REPRODUCED, AND (D) IT WILL BE RETURNED TO ACRADYNE/AIMCO IMMEDIATELY UPON DEMAND.

REVISION LEVEL	REVISION RELEASE DATE	DESCRIPTION OF CHANGES MADE TO PART	ECN #	AUTHOR/ APPROVAL

UNLESS OTHERWISE SPECIFIED, DIMENSIONS ARE IN INCHES
 DIMENSIONS AND TOLERANCING PER ANSI Y14.5
 SURFACE ROUGHNESS PER ANSI Y14.36

BLOCK TOLERANCING PER DECIMAL:
 .X = ±.030 .XX = ±.010 .XXX = ±.005 .XXXX = ±.0005
 ANGLE = ±0°30'

REMOVE BURRS AND SHARP EDGES: R.015 MAX
 MACHINE SURFACE FINISH: 125 RMS OR BETTER

DRAWINGS AND TECHNICAL DOCUMENTS CONTROLLED BY:
ACRADYNE MECHANICAL ENGINEERING

"J" HANDLE NUTRUNNER, W/SLIPRING CLUTCH AND FAN KIT, 8100Nm

SIZE D	PART / DRAWING NUMBER AEJ4W998100B	REVISION B
SCALE: 2:3	DO NOT SCALE DRAWING	SHEET 2 OF 2