

COMMENTS	ITEM NO.	PART NUMBER	QTY.	DESCRIPTION
	1	26160	1	MOTOR ASM.
	2	24840	1	FOIL SEAL 2" DIA
	3	29335	4	STANDOFF, M-F, 4-40 X 3/16, SS
	4	27797	1	TID BOARD, POPULATED W/O AMP CIRCUIT
	5	25490	2	LENS, LED
	6	29337	3	STANDOFF, M-F, 4-40 X 1/8, SS
	7	25574	1	STANDOFF M-F, 4-40x1/4, 3/16 HEX, SS
	8	29338	1	TID WIRE INSULATOR
	9	25573	4	SCREW PHP 4-40 X 3/16 18-8 SS
	10	25225	1	END GRIP CAP, HT TOOLS
	11	27063	1	TOOL CONNECTOR CLIP
	12	26015	1	SCREW, BHSC, 10-32 X .313, SS
	13	25568	4	SHC 10-32 x 1.25 BLK OXIDE
	14	25229	1	AXIAL HANDLE, HT TOOLS
	15	SEE CHART	1	GEAR BOX ASM.
	16	27978	1	SLIP RING INNER PLATE
	17	28278	1	SLIP RING OUTER PLATE SUB-ASM.
	18	28174	8	SPRING, COMPRESSION
	19	20105	8	DETENT BALL
	20	27714	2	O-RING 3" ID
SEE WORK INSTRUCTIONS	21	SEE CHART	1	SLIP RING SET
	22	27994	6	DOWEL PIN, Ø.0938 X .1875 LG., STEEL
	23	27993	6	SCREW, FHPM, 2-56, 18-8SS, PLAIN
	24	27953	1	O-RING, 70 DURO BUNA N, -042
	25	25745	2	SCREW, BHSC 4-40 STEEL, BLACK OXIDE
	26	28000	1	CABLE TIE-MOUNT
	27	24940	1	SCREW, FHSC 4-40 X .25 LG., STEEL, BLACK OXIDE
	28	28257	4	CABLE TIE, 1.65MM W X 71MM LG
	29	25969	2	BEARING, BALL, Ø42mm X Ø30mm X 7mm
	30	25961	1	BEARING RETAINER, INNER
	31	25962	1	BEARING RETAINER, OUTER
	32	27980	1	SLIP RING PINION ADAPTER
	33	26080	1	O-RING, LED LIGHT RING COVER
	34	29279	10	SCREW, BHSC, TORX, 10-32 X 3/8, STEEL
	35	29284	2	SCREW, BHSC, TORX, 10-32 X 1/2, STEEL
	36	25984	1	TRANSUCER WIRE TRAY
	37	25985	1	TRANSUCER WIRE COVER FOR MOD 25232
	38	25212	1	SWITCH SUB-ASSEMBLY
NOT SHOWN	39	25582	1	TRIGGER CABLE
	40	25569	6	SCREW LHCS 10-32 X 3/8 18-8 SS
	41	25564	2	WASHER SHIM .093THK .25ID .375OD
	42	28204	1	RING GEAR COVER, 8100Nm
	43	25507	1	TOOL CONNECTOR ASM HERC PISTOL
	44	26636	1	GEAR CASE COVER
	45	26319	3	SCREW, BHSC 6-32 X .188, 18-8 SS
	46	26899	1	CHOOSE REACTION BAR
	47	26436	1	RETAINING RING, SPIRAL, Ø3.833 X Ø3.293 X .111
	48	25579	1	PLUG 3/8"
	49	24858	1	PLUG 1 3/16
	50	24859	3	LHSC 10-32 X 1/4 BLK OXIDE

NOTE:  
SEE WORK INSTRUCTION DOCUMENT "EWI-011"  
FOR COMPLETE ASSEMBLY INSTRUCTIONS.

MODEL NO.	GEARBOX ASM.	SLIP RING SET
AEJ4B896500B	28114	27983.005
AEJ4W896500B	28115	27983.005
AEJ4B898100B	28115	27983.006

◆ ASSEMBLY INSTRUCTIONS  
◊ SUB-ASSEMBLY

- GEARS & SPLINES: LUBRICATE WITH DOW CORNING MOLYKOTE BR2 PLUS GREASE.
- BEARINGS: LUBRICATE WITH CHEVRON SR1 GREASE
- O-RINGS: LUBRICATE WITH O-RING LUBE



**DOCUMENT CONTROL**  
PRINTED COPIES OF THIS DOCUMENT ARE CONSIDERED TO BE UNCONTROLLED DOCUMENTS. HOLDERS ARE RESPONSIBLE FOR VERIFYING THE CURRENT REVISION LEVEL WITH PURCHASING OR ENGINEERING PRIOR TO USE OR FABRICATION. THE CONTROLLED VERSION OF THIS DOCUMENT IS ELECTRONICALLY MAINTAINED.

**PROPRIETARY AND CONFIDENTIAL**  
THIS DRAWING CONTAINS INFORMATION STRICTLY CONFIDENTIAL TO ACRADYNE/AIMCO. IN THE ABSENCE OF EXPRESSED WRITTEN PERMISSION, ACRADYNE/AIMCO HAS LOANED THIS COPY WITH THE MUTUAL UNDERSTANDING THAT (A) IT WILL NOT BE USED FOR ANY PURPOSE OTHER THAN FOR THAT IN WHICH IT WAS PROVIDED, (B) THE DATA CONTAINED HEREIN WILL NOT BE DISCLOSED TO OTHERS, (C) IT WILL NOT BE REPRODUCED, AND (D) IT WILL BE RETURNED TO ACRADYNE/AIMCO IMMEDIATELY UPON DEMAND.

REVISION BLOCK

UNLESS OTHERWISE SPECIFIED,  
DIMENSIONS ARE IN INCHES  
DIMENSIONS AND TOLERANCING PER ANSI Y14.5  
SURFACE ROUGHNESS PER ANSI Y14.36

**BLOCK TOLERANCING PER DECIMAL:**  
.X = ±.030 .XX = ±.010 .XXX = ±.005 .XXXX = ±.0005  
ANGLE = 30°

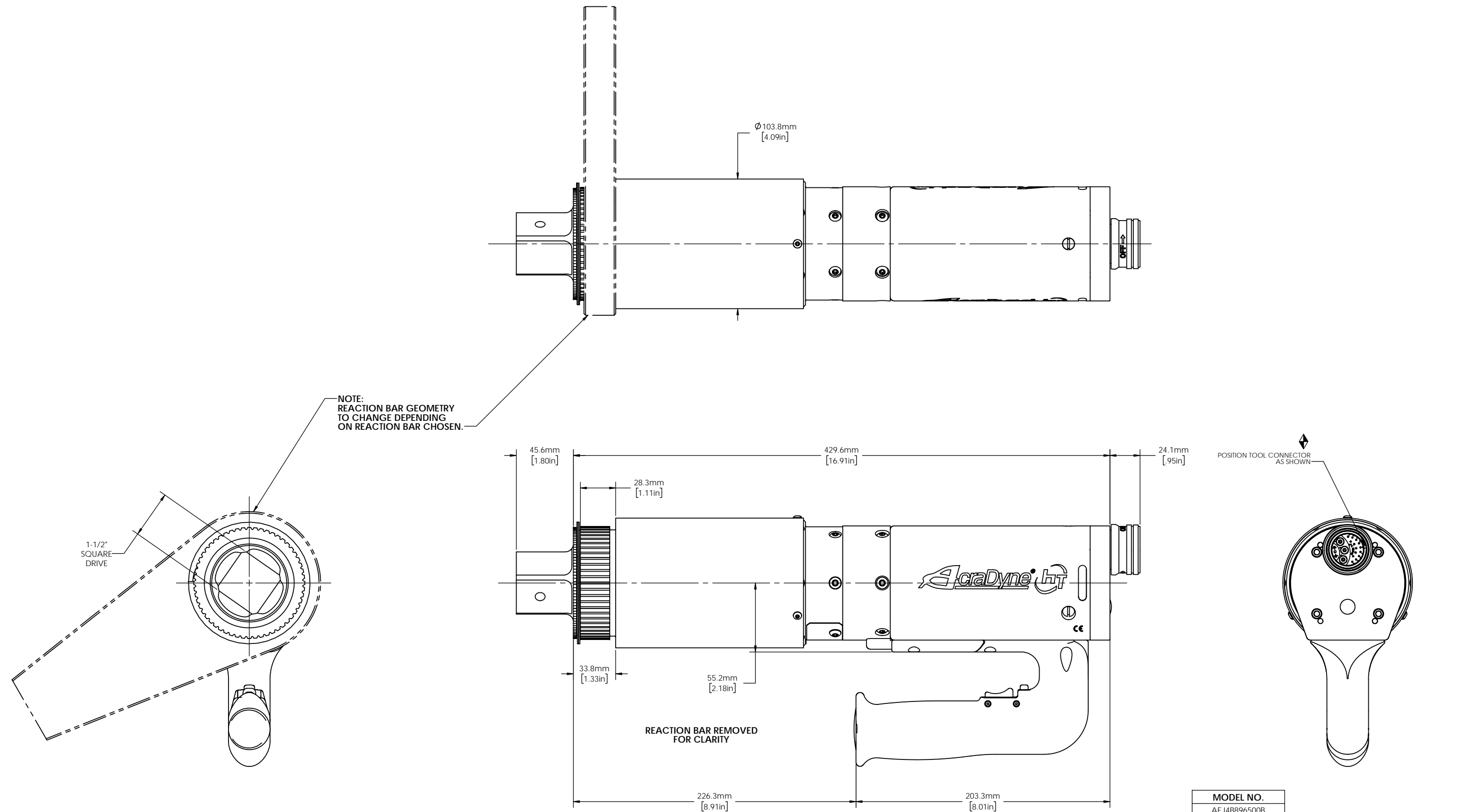
REMOVE BURRS AND SHARP EDGES: R.015 MAX  
MACHINE SURFACE FINISH: 125 RMS OR BETTER

DRAWINGS AND TECHNICAL DOCUMENTS CONTROLLED BY:  
**ACRADYNE MECHANICAL ENGINEERING**

**"J" HANDLE NUTRUNNER  
W/SLIP RING CLUTCH  
8000 SERIES**

SIZE	PART / DRAWING NUMBER	REVISION
D	AEJ4_89_ _ _ B	D

SCALE: 2:3 DO NOT SCALE DRAWING SHEET 1 OF 2



NOTE:  
REACTION BAR GEOMETRY  
TO CHANGE DEPENDING  
ON REACTION BAR CHOSEN.

1-1/2"  
SQUARE  
DRIVE

REACTION BAR REMOVED  
FOR CLARITY

POSITION TOOL CONNECTOR  
AS SHOWN

<b>MODEL NO.</b>
AEJ4B896500B
AEJ4W896500B
AEJ4B898100B



**DOCUMENT CONTROL**  
PRINTED COPIES OF THIS DOCUMENT ARE CONSIDERED TO BE UNCONTROLLED DOCUMENTS. HOLDERS ARE RESPONSIBLE FOR VERIFYING THE CURRENT REVISION LEVEL WITH PURCHASING OR ENGINEERING PRIOR TO USE OR FABRICATION. THE CONTROLLED VERSION OF THIS DOCUMENT IS ELECTRONICALLY MAINTAINED.

**PROPRIETARY AND CONFIDENTIAL**  
THIS DRAWING CONTAINS INFORMATION STRICTLY CONFIDENTIAL TO ACRADYNE/AIMCO. IN THE ABSENCE OF EXPRESSED WRITTEN PERMISSION, ACRADYNE/AIMCO HAS LOANED THIS COPY WITH THE MUTUAL UNDERSTANDING THAT (A) IT WILL NOT BE USED FOR ANY PURPOSE OTHER THAN FOR THAT IN WHICH IT WAS PROVIDED, (B) THE DATA CONTAINED HEREIN WILL NOT BE DISCLOSED TO OTHERS, (C) IT WILL NOT BE REPRODUCED, AND (D) IT WILL BE RETURNED TO ACRADYNE/AIMCO IMMEDIATELY UPON DEMAND.

**UNLESS OTHERWISE SPECIFIED, DIMENSIONS ARE IN INCHES**  
DIMENSIONS AND TOLERANCING PER ANSI Y14.5  
SURFACE ROUGHNESS PER ANSI Y14.36

**BLOCK TOLERANCING PER DECIMAL:**  
.X = ±.030 .XX = ±.010 .XXX = ±.005 .XXXX = ±.0005  
ANGLE = ±0° 30'

REMOVE BURRS AND SHARP EDGES: R.015 MAX  
MACHINE SURFACE FINISH: 125 RMS OR BETTER

DRAWINGS AND TECHNICAL DOCUMENTS CONTROLLED BY:  
**ACRADYNE MECHANICAL ENGINEERING**

<b>"J" HANDLE NUTRUNNER W/SLIP RING CLUTCH 8000 SERIES</b>		
SIZE	PART / DRAWING NUMBER	REVISION
<b>D</b>	<b>AEJ4_89__ _B</b>	<b>D</b>
SCALE: 1:8	DO NOT SCALE DRAWING	SHEET 2 OF 2

REVISION BLOCK