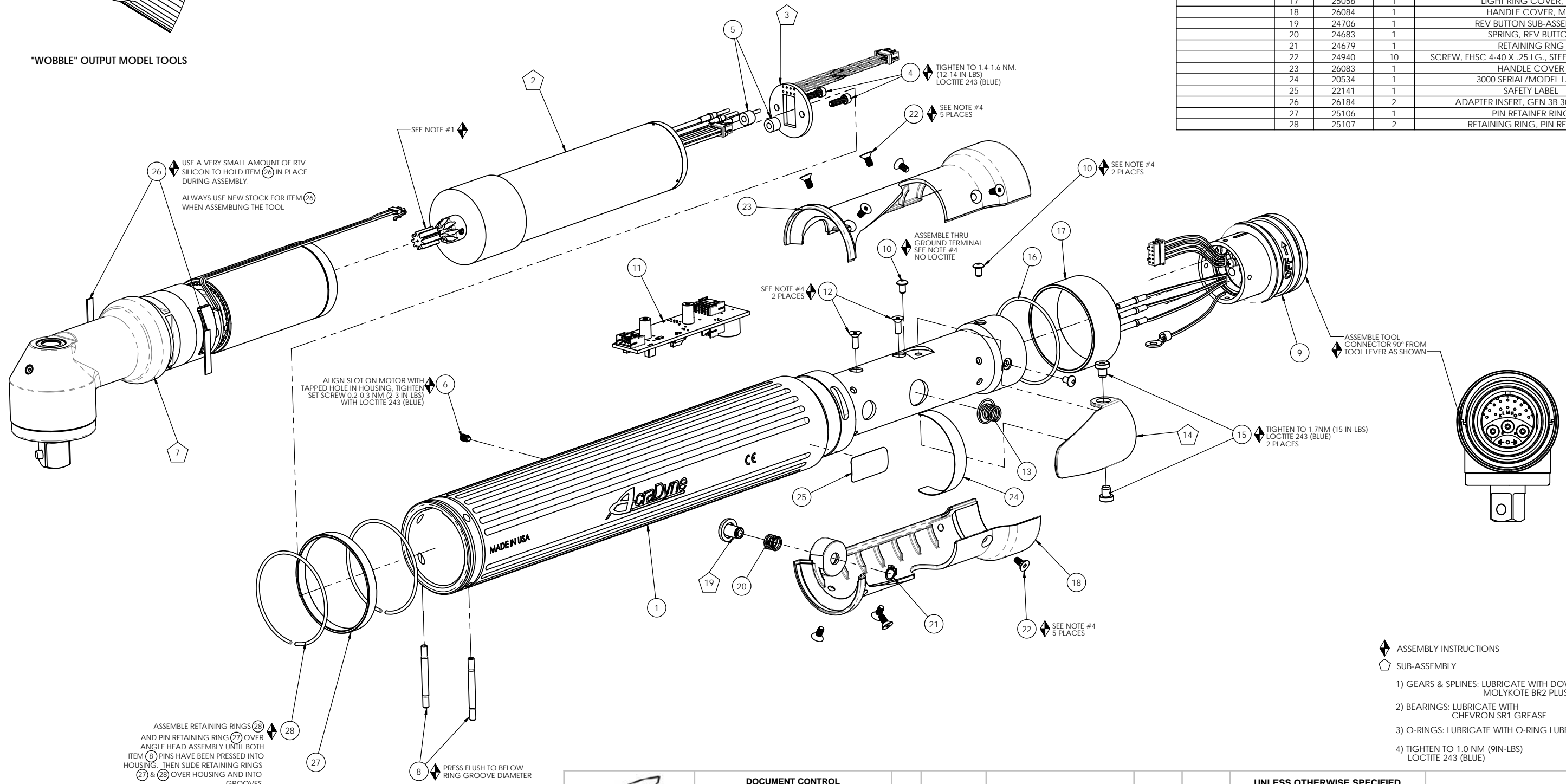


"WOBBLE" OUTPUT MODEL TOOLS

MODEL NO.	ANGLEHEAD/GEAR TRAIN ASM.
AEN33060C	27621
AEN33060CW	28893
AEN33090C	27623
AEN33090CW	28894

COMMENTS	ITEM NO.	PART NUMBER	QTY.	DESCRIPTION
	1	27031	1	NUTRUNNER HOUSING, GEN III
	2	25525	1	MOTOR ASSY, 9T, 3000 SERIES
	3	25063	1	LED BOARD ASM.
	4	25075	2	SCREW, SHC 4-40X.375, STEEL, BLACK OXIDE
	5	25430	2	STAND-OFF, LED, 3000 SERIES
	6	27027	1	SCREW, SET 5-40X.188,STEEL,BLK OXIDE
	7	SEE CHART	1	GEAR TRAIN ASM., ANGLE HEAD, GEN 3C
	8	26793	2	RETAINING PIN, .125 OD X 1-1/4
	9	26102	1	TOOL CONNECTOR ASM., LEVER
	10	25745	5	SCREW, BHSC 4-40 STEEL, BLACK OXIDE
	11	25847	1	TID BOARD ASM.
	12	24934	2	SCREW, FHC 4-40 X .312, STEEL, BLACK OXIDE
	13	20132	1	THROTTLE SPRING
	14	26532	1	GEN 3 TRIGGER ASSY., CAST
	15	20061	2	SCREW, LEVER
	16	25072	1	O-RING, LED LIGHT RING COVER
	17	25058	1	LIGHT RING COVER, LED
	18	26084	1	HANDLE COVER, MFB
	19	24706	1	REV BUTTON SUB-ASSEMBLY
	20	24683	1	SPRING, REV BUTTON
	21	24679	1	RETAINING RING
	22	24940	10	SCREW, FHSC 4-40 X .25 LG., STEEL, BLACK OXIDE
	23	26083	1	HANDLE COVER
	24	20534	1	3000 SERIAL/MODEL LABEL
	25	22141	1	SAFETY LABEL
	26	26184	2	ADAPTER INSERT, GEN 3B 3000 SERIES
	27	25106	1	PIN RETAINER RING
	28	25107	2	RETAINING RING, PIN RETAINER



26 USE A VERY SMALL AMOUNT OF RIV SILICON TO HOLD ITEM 26 IN PLACE DURING ASSEMBLY.
ALWAYS USE NEW STOCK FOR ITEM 26 WHEN ASSEMBLING THE TOOL

6 ALIGN SLOT ON MOTOR WITH TAPPED HOLE IN HOUSING. TIGHTEN SET SCREW 0.2-0.3 NM (2-3 IN-LBS) WITH LOCTITE 243 (BLUE)

ASSEMBLE RETAINING RINGS 28 AND PIN RETAINING RING 27 OVER ANGLE HEAD ASSEMBLY UNTIL BOTH ITEM 8 PINS HAVE BEEN PRESSED INTO HOUSING. THEN SLIDE RETAINING RINGS 27 & 28 OVER HOUSING AND INTO GROOVES.

8 PRESS FLUSH TO BELOW RING GROOVE DIAMETER

4 TIGHTEN TO 1.4-1.6 NM. (12-14 IN-LBS) LOCTITE 243 (BLUE)

22 SEE NOTE #4 5 PLACES

10 SEE NOTE #4 2 PLACES

12 SEE NOTE #4 2 PLACES

10 ASSEMBLE THRU GROUND TERMINAL SEE NOTE #4 NO LOCTITE

15 TIGHTEN TO 1.7NM (15 IN-LBS) LOCTITE 243 (BLUE) 2 PLACES

9 ASSEMBLE TOOL CONNECTOR 90° FROM TOOL LEVER AS SHOWN

22 SEE NOTE #4 5 PLACES

- ◆ ASSEMBLY INSTRUCTIONS
- ◊ SUB-ASSEMBLY
- 1) GEARS & SPLINES: LUBRICATE WITH DOW CORNING MOLYKOTE BR2 PLUS GREASE.
- 2) BEARINGS: LUBRICATE WITH CHEVRON SR1 GREASE
- 3) O-RINGS: LUBRICATE WITH O-RING LUBE
- 4) TIGHTEN TO 1.0 NM (9IN-LBS) LOCTITE 243 (BLUE)

REQUIRED TOOLING
LOCTITE 243 (BLUE)
1/16 HEX WRENCH
5/64 HEX WRENCH
3/32 HEX WRENCH
SNAP RING PLIERS - EXTERNAL TYPE



DOCUMENT CONTROL
PRINTED COPIES OF THIS DOCUMENT ARE CONSIDERED TO BE UNCONTROLLED DOCUMENTS. HOLDERS ARE RESPONSIBLE FOR VERIFYING THE CURRENT REVISION LEVEL WITH PURCHASING OR ENGINEERING PRIOR TO USE OR FABRICATION. THE CONTROLLED VERSION OF THIS DOCUMENT IS ELECTRONICALLY MAINTAINED.

PROPRIETARY AND CONFIDENTIAL
THIS DRAWING CONTAINS INFORMATION STRICTLY CONFIDENTIAL TO ACRADYNE/AIMCO. IN THE ABSENCE OF EXPRESSED WRITTEN PERMISSION, ACRADYNE/AIMCO HAS LOANED THIS COPY WITH THE MUTUAL UNDERSTANDING THAT (A) IT WILL NOT BE USED FOR ANY PURPOSE OTHER THAN FOR THAT IN WHICH IT WAS PROVIDED, (B) THE DATA CONTAINED HEREIN WILL NOT BE DISCLOSED TO OTHERS, (C) IT WILL NOT BE REPRODUCED, AND (D) IT WILL BE RETURNED TO ACRADYNE/AIMCO IMMEDIATELY UPON DEMAND.

REVISION LEVEL	REVISION RELEASE DATE	DESCRIPTION OF CHANGES MADE TO PART	ECN #	AUTHOR/ APPROVAL

UNLESS OTHERWISE SPECIFIED, DIMENSIONS ARE IN INCHES
DIMENSIONS AND TOLERANCING PER ANSI Y14.5 SURFACE ROUGHNESS PER ANSI Y14.36

BLOCK TOLERANCING PER DECIMAL:
.X = ±.030 .XX = ±.010 .XXX = ±.005 .XXXX = ±.0005
ANGLE = ±0° 30'

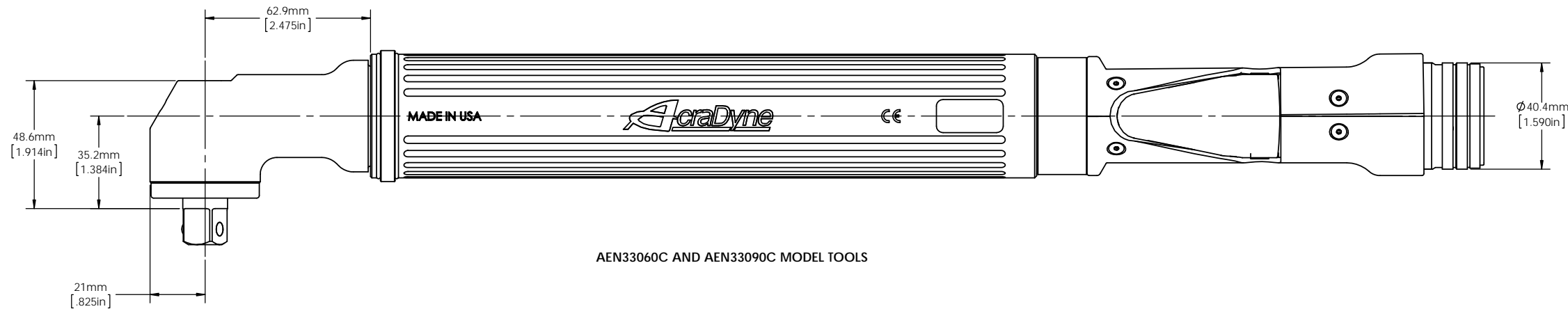
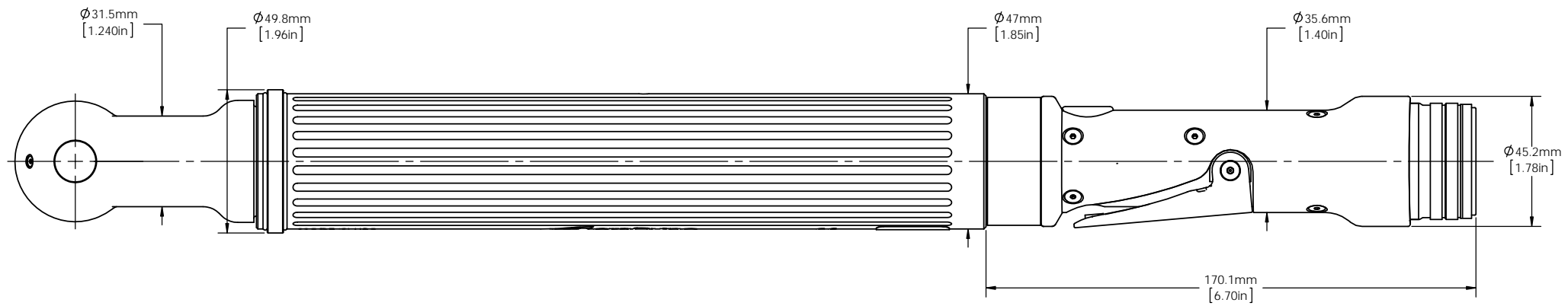
REMOVE BURRS AND SHARP EDGES: R.015 MAX MACHINE SURFACE FINISH: 125 RMS OR BETTER

DRAWINGS AND TECHNICAL DOCUMENTS CONTROLLED BY:
ACRADYNE MECHANICAL ENGINEERING

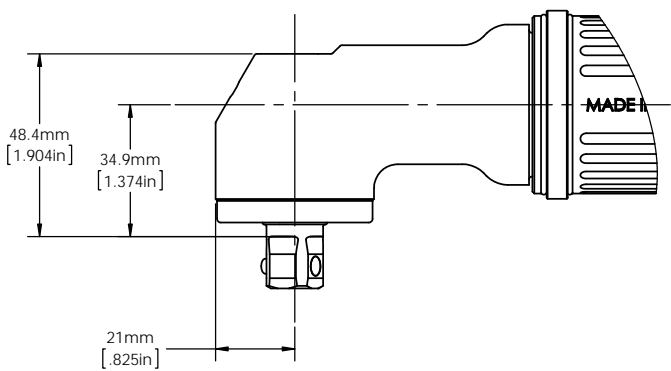
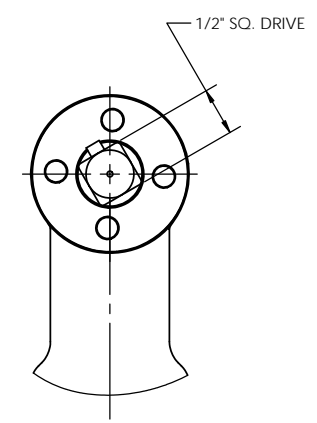
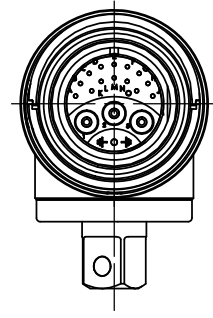
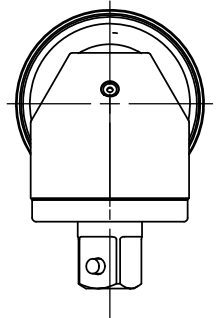
ANGLE NUTRUNNER 3000 SERIES - GEN 3C		
SIZE D	PART / DRAWING NUMBER AEN330_OC_	REVISION B
SCALE: 1:1	DO NOT SCALE DRAWING	SHEET 1 OF 2

8 7 6 5 4 3 2 1

F
E
D
C
B
A



AEN33060C AND AEN33090C MODEL TOOLS



AEN33060CW AND AEN33090CW "WOBBLE" MODEL TOOLS



DOCUMENT CONTROL
 PRINTED COPIES OF THIS DOCUMENT ARE CONSIDERED TO BE UNCONTROLLED DOCUMENTS. HOLDERS ARE RESPONSIBLE FOR VERIFYING THE CURRENT REVISION LEVEL WITH PURCHASING OR ENGINEERING PRIOR TO USE OR FABRICATION. THE CONTROLLED VERSION OF THIS DOCUMENT IS ELECTRONICALLY MAINTAINED.

PROPRIETARY AND CONFIDENTIAL
 THIS DRAWING CONTAINS INFORMATION STRICTLY CONFIDENTIAL TO ACRADYNE/AIMCO. IN THE ABSENCE OF EXPRESSED WRITTEN PERMISSION, ACRADYNE/AIMCO HAS LOANED THIS COPY WITH THE MUTUAL UNDERSTANDING THAT (A) IT WILL NOT BE USED FOR ANY PURPOSE OTHER THAN FOR THAT IN WHICH IT WAS PROVIDED, (B) THE DATA CONTAINED HEREIN WILL NOT BE DISCLOSED TO OTHERS, (C) IT WILL NOT BE REPRODUCED, AND (D) IT WILL BE RETURNED TO ACRADYNE/AIMCO IMMEDIATELY UPON DEMAND.

REVISION LEVEL	REVISION RELEASE DATE	DESCRIPTION OF CHANGES MADE TO PART	ECN #	AUTHOR/ APPROVAL
REVISION BLOCK				

UNLESS OTHERWISE SPECIFIED, DIMENSIONS ARE IN INCHES
 DIMENSIONS AND TOLERANCING PER ANSI Y14.5
 SURFACE ROUGHNESS PER ANSI Y14.36

BLOCK TOLERANCING PER DECIMAL:
 .X = ±.030 .XX = ±.010 .XXX = ±.005 .XXXX = ±.0005
 ANGLE = ±0° 30'

REMOVE BURRS AND SHARP EDGES: R.015 MAX
 MACHINE SURFACE FINISH: 125 RMS OR BETTER

DRAWINGS AND TECHNICAL DOCUMENTS CONTROLLED BY:
ACRADYNE MECHANICAL ENGINEERING

ANGLE NUTRUNNER 3000 SERIES - GEN 3C		
SIZE D	PART / DRAWING NUMBER AEN330_OC_	REVISION B
SCALE 1:4	DO NOT SCALE DRAWING	SHEET 2 OF 2

8 7 6 5 4 3 2 1