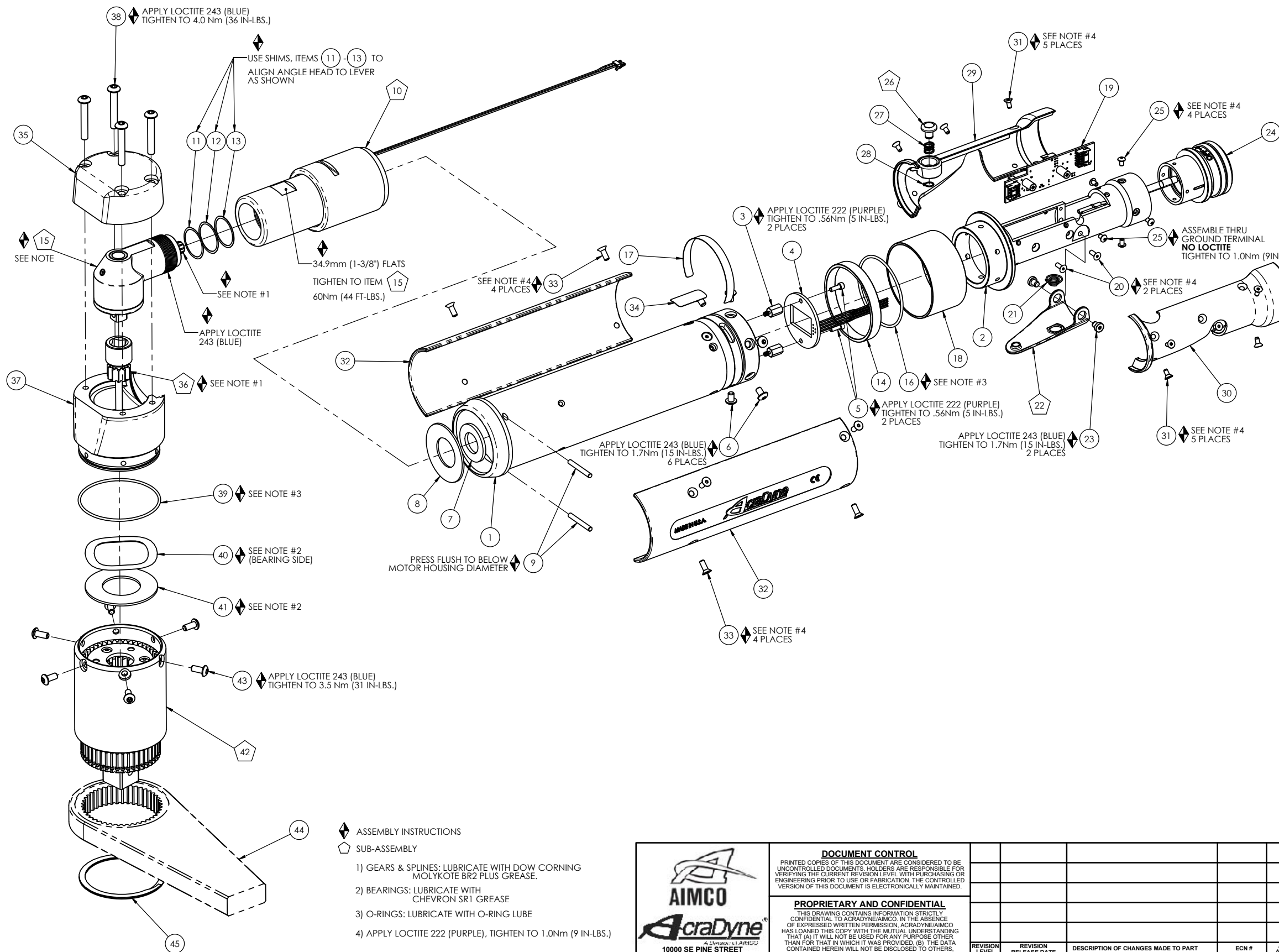


NOTE:

BEVEL GEARS IN ANGLE HEAD ASSEMBLY, ITEM 15 MUST BE SHIMMED PRIOR TO INSTALLATION OF GEARHEAD ADAPTING COMPONENTS.



◆ ASSEMBLY INSTRUCTIONS
 ◡ SUB-ASSEMBLY

- 1) GEARS & SPLINES: LUBRICATE WITH DOW CORNING MOLYKOTE BR2 PLUS GREASE.
- 2) BEARINGS: LUBRICATE WITH CHEVRON SR1 GREASE
- 3) O-RINGS: LUBRICATE WITH O-RING LUBE
- 4) APPLY LOCTITE 222 (PURPLE), TIGHTEN TO 1.0Nm (9 IN-LBS.)

COMMENTS	ITEM NO.	PART NUMBER	QTY.	DESCRIPTION
	1	26058	1	MOTOR ASM., 5000 SERIES
	2	26082	1	LEVER HANDLE
	3	26077	2	M-F THREADED HEX STANDOFF
	4	26095	1	LED BOARD ASM.
	5	26078	2	SHC SCREW, 4-40, BLACK OXIDE
	6	26088	6	SCREW, BHC 8-32X.25, STEEL, BLACK OXIDE
	7	26198	1	THRUST WASHER
	8	26074	1	BELLEVILLE WASHER
	9	26530	2	DOWEL PIN, Ø1/8 x 1.00, STEEL
	10	31128	1	GEAR CASE TRANSDUCER ADAPTER SUB-ASM., 5000-SERIES
	11	21091	A/R	SHIM, PINION SHAFT, .002 --- 2000 SERIES
	12	21092	A/R	SHIM, PINION SHAFT, .005 --- 2000 SERIES
	13	21093	A/R	SHIM, PINION SHAFT, .010 --- 2000 SERIES
	14	27391	1	PIN RETAINER RING
	15	27135	1	ANGLE HEAD ASM, 3/8 SQ.
	16	26080	1	O-RING, LED LIGHT RING COVER
	17	20534	1	3000 SERIAL/MODEL LABEL
	18	26079	1	LIGHT RING COVER, LED
	19	25847	1	TID BOARD ASM.
	20	24934	2	SCREW, FHC 4-40 X .312, STEEL, BLACK OXIDE
	21	20132	1	THROTTLE SPRING
	22	26532	1	GEN 3 TRIGGER ASSY, CAST
	23	20061	2	SCREW, LEVER
	24	26102	1	TOOL CONNECTOR ASM., LEVER
	25	25745	5	SCREW, BHSC 4-40 STEEL, BLACK OXIDE
	26	24706	1	REV BUTTON SUB-ASSEMBLY
	27	24683	1	SPRING, REV BUTTON
	28	24679	1	RETAINING RING
	29	26084	1	HANDLE COVER, MFB
	30	26083	1	HANDLE COVER
	31	24940	10	SCREW, FHSC 4-40 X .25 LG., STEEL, BLACK OXIDE
	32	26081	2	MOTOR HOUSING COVER
	33	25385	8	SCREW, FHSC 6-32 X .375, STEEL
	34	22141	1	SAFETY LABEL
	35	29486	1	TOP CAP, HT ANGLEHEAD, 900 Nm
	36	29501	1	INPUT GEAR ASSY, HT ANGLEHEAD
	37	31127	1	ADAPTER, HT ANGLEHEAD, NON-CLUTCH, 900Nm
	38	27401	4	SCREW, BHSC 10-32 X 1.25, STEEL, BLK OXIDE
	39	26488	1	O-RING, MOTOR HOUSING
	40	29294	1	WAVE DISC SPRING
	41	26500	1	WASHER, THRUST, Ø2.050 X Ø1.080 X .0625
	42	29492	1	GEARBOX ASSY, 155.018:1, HT AIR TOOLS
	43	29285	6	SCREW, BHSC, TORX, 8-32 x .38, STEEL
	44	26896	1	CHOOSE REACTION BAR
	45	26514	1	RETAINING RING, SPIRAL, Ø2.441 X Ø2.105 X .078



DOCUMENT CONTROL
 PRINTED COPIES OF THIS DOCUMENT ARE CONSIDERED TO BE UNCONTROLLED DOCUMENTS. HOLDERS ARE RESPONSIBLE FOR VERIFYING THE CURRENT REVISION LEVEL WITH PURCHASING OR ENGINEERING PRIOR TO USE OR FABRICATION. THE CONTROLLED VERSION OF THIS DOCUMENT IS ELECTRONICALLY MAINTAINED.

PROPRIETARY AND CONFIDENTIAL
 THIS DRAWING CONTAINS INFORMATION STRICTLY CONFIDENTIAL TO ACRADYNE/AIMCO. IN THE ABSENCE OF EXPRESSED WRITTEN PERMISSION, ACRADYNE/AIMCO HAS LOANED THIS COPY WITH THE MUTUAL UNDERSTANDING THAT (A) IT WILL NOT BE USED FOR ANY PURPOSE OTHER THAN FOR THAT IN WHICH IT WAS PROVIDED, (B) THE DATA CONTAINED HEREIN WILL NOT BE DISCLOSED TO OTHERS, (C) IT WILL NOT BE REPRODUCED, AND (D) IT WILL BE RETURNED TO ACRADYNE/AIMCO IMMEDIATELY UPON DEMAND.

REVISION LEVEL	REVISION RELEASE DATE	DESCRIPTION OF CHANGES MADE TO PART	ECN #	AUTHOR/ APPROVAL

UNLESS OTHERWISE SPECIFIED, DIMENSIONS ARE IN INCHES
 DIMENSIONS AND TOLERANCING PER ANSI Y14.5
 SURFACE ROUGHNESS PER ANSI Y14.36

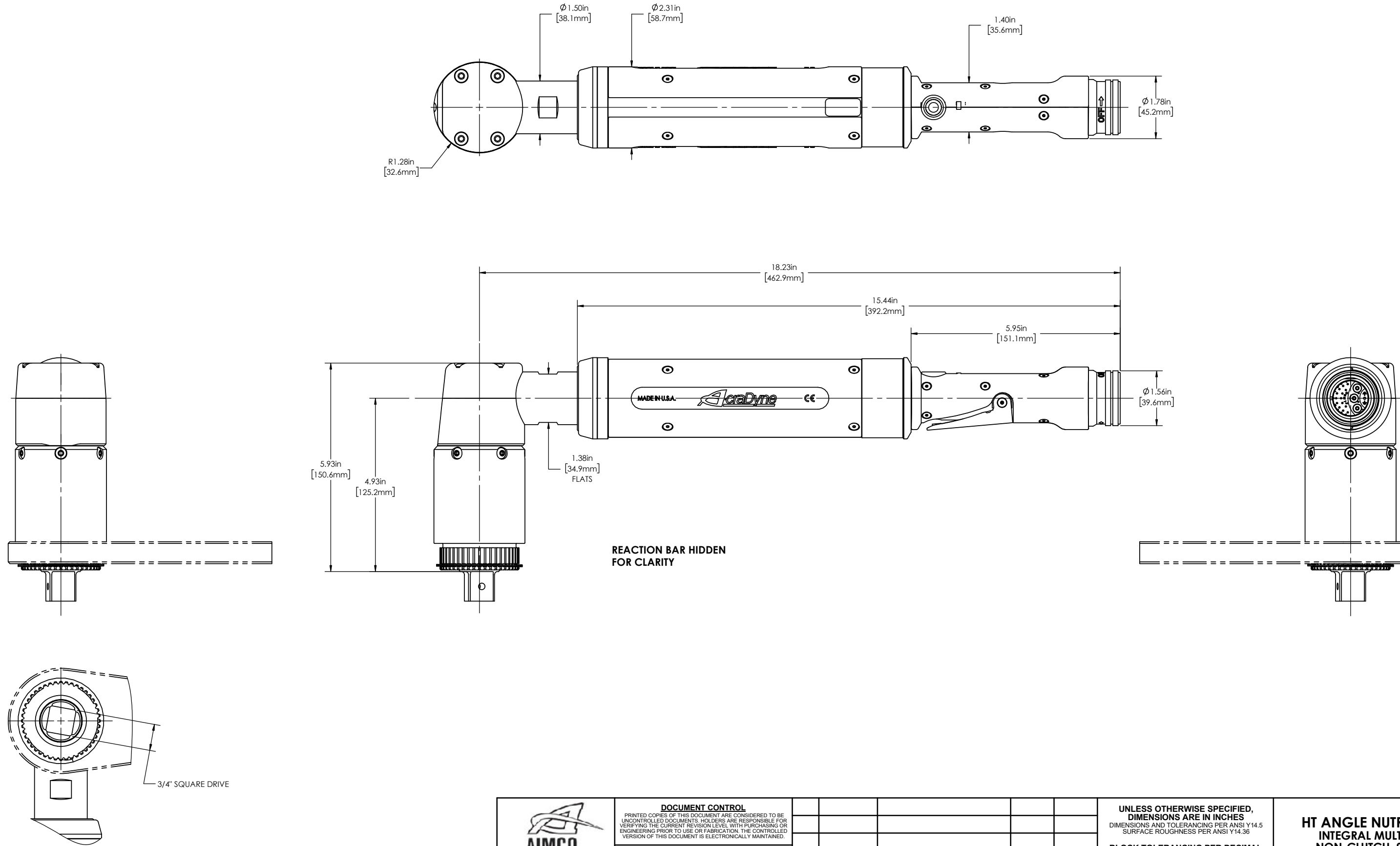
BLOCK TOLERANCING PER DECIMAL:
 .X = ±.030 .XX = ±.010 .XXX = ±.005 .XXXX = ±.0005
 ANGLE = ±0° 30'

REMOVE BURRS AND SHARP EDGES: R.015 MAX
 MACHINE SURFACE FINISH: 125 RMS OR BETTER

DRAWINGS AND TECHNICAL DOCUMENTS CONTROLLED BY:
ACRADYNE MECHANICAL ENGINEERING

**HT ANGLE NUTRUNNER
 INTEGRAL MULTIPLIER
 NON-CLUTCH, 900Nm
 5000-SERIES**

SIZE D	PART / DRAWING NUMBER AEN356910AG	REVISION A
SCALE: 2:3	DO NOT SCALE DRAWING	SHEET 1 OF 2



REACTION BAR HIDDEN FOR CLARITY

3/4" SQUARE DRIVE



DOCUMENT CONTROL
 PRINTED COPIES OF THIS DOCUMENT ARE CONSIDERED TO BE UNCONTROLLED DOCUMENTS. HOLDERS ARE RESPONSIBLE FOR VERIFYING THE CURRENT REVISION LEVEL WITH PURCHASING OR ENGINEERING PRIOR TO USE OR FABRICATION. THE CONTROLLED VERSION OF THIS DOCUMENT IS ELECTRONICALLY MAINTAINED.

PROPRIETARY AND CONFIDENTIAL
 THIS DRAWING CONTAINS INFORMATION STRICTLY CONFIDENTIAL TO ACRADYNE/AIMCO. IN THE ABSENCE OF EXPRESSED WRITTEN PERMISSION, ACRADYNE/AIMCO HAS LOANED THIS COPY WITH THE MUTUAL UNDERSTANDING THAT (A) IT WILL NOT BE USED FOR ANY PURPOSE OTHER THAN FOR THAT IN WHICH IT WAS PROVIDED, (B) THE DATA CONTAINED HEREIN WILL NOT BE DISCLOSED TO OTHERS, (C) IT WILL NOT BE REPRODUCED, AND (D) IT WILL BE RETURNED TO ACRADYNE/AIMCO IMMEDIATELY UPON DEMAND.

REVISION LEVEL	REVISION RELEASE DATE	DESCRIPTION OF CHANGES MADE TO PART	ECN #	AUTHOR/ APPROVAL

UNLESS OTHERWISE SPECIFIED, DIMENSIONS ARE IN INCHES
 DIMENSIONS AND TOLERANCING PER ANSI Y14.5
 SURFACE ROUGHNESS PER ANSI Y14.36

BLOCK TOLERANCING PER DECIMAL:
 .X = ±.030 .XX = ±.010 .XXX = ±.005 .XXXX = ±.0005
 ANGLE = ±0° 30'

REMOVE BURRS AND SHARP EDGES: R.015 MAX
 MACHINE SURFACE FINISH: 125 RMS OR BETTER

DRAWINGS AND TECHNICAL DOCUMENTS CONTROLLED BY:
ACRADYNE MECHANICAL ENGINEERING

HT ANGLE NUTRUNNER INTEGRAL MULTIPLIER NON-CLUTCH, 900Nm 5000-SERIES		
SIZE D	PART / DRAWING NUMBER AEN356910AG	REVISION A
SCALE 3:4	DO NOT SCALE DRAWING	SHEET 2 OF 2