

EXPLODED VIEW OF AEN35090A TOOL ASSEMBLY

MODEL NO.	GEAR TRAIN ASM.	GEAR CARRIER ASM.	ANGLE HEAD ASM.	SPLINED SPINDLE SHAFT	ADAPTER INSERT
AEN35090B	26116	20924	27441	26122	26184
AEN35140B	26116	20924	27088	N/A	N/A
AEN35175B	26115	26117	27088	N/A	N/A
AEN35225B	26114	20924	27145	N/A	N/A
AEN35285B	26112	20924	27145	N/A	N/A
AEN35350B	26111	26117	27145	N/A	N/A

COMMENTS	ITEM NO.	PART NUMBER	QTY.	DESCRIPTION
	1	26058	1	MOTOR ASM., 5000 SERIES
	2	26198	1	THRUST WASHER
	3	26074	1	BELLEVILLE WASHER
	4	SEE CHART	1	GEAR TRAIN ASM.
	5	26530	2	DOWEL PIN, $\varnothing 1/8 \times 1.00$ , STEEL
	6	27391	1	PIN RETAINER RING
	7	20912	1	WAVE SPRING --- 3000 SERIES
	8	SEE CHART	1	ASSEMBLY, GEAR CARRIER
	9	SEE CHART	1	SPLINED SPINDLE SHAFT
	10	20911	2	BELLEVILLE WASHER
	11	SEE CHART	1	ANGLE HEAD ASM.
	12	20913	2	PIN, RETAINING
	13	26077	2	M-F THREADED HEX STANDOFF
	14	26095	1	LED BOARD ASM.
	15	26078	2	SHC SCREW, 4-40, BLACK OXIDE
	16	26080	1	O-RING, LED LIGHT RING COVER
	17	26079	1	LIGHT RING COVER, LED
	18	26082	1	LEVER HANDLE
	19	26088	6	SCREW, BHC 8-32X.25, STEEL, BLACK OXIDE
	20	26102	1	TOOL CONNECTOR ASM., LEVER
	21	25745	5	SCREW, BHSC 4-40 STEEL, BLACK OXIDE
	22	25847	1	TID BOARD ASM.
	23	24934	2	SCREW, FHC 4-40 X .312, STEEL, BLACK OXIDE
	24	20132	1	THROTTLE SPRING
	25	26532	1	GEN 3 TRIGGER ASSY, CAST
	26	20061	2	SCREW, LEVER
	27	26084	1	HANDLE COVER, MFB
	28	24706	1	REV BUTTON SUB-ASSEMBLY
	29	24683	1	SPRING, REV BUTTON
	30	24679	1	RETAINING RING
	31	24940	10	SCREW, FHSC 4-40 X .25 LG., STEEL, BLACK OXIDE
	32	26083	1	HANDLE COVER
	33	20534	1	3000 SERIAL/MODEL LABEL
	34	26081	2	MOTOR HOUSING COVER
	35	25385	8	SCREW, FHSC 6-32 X .375, STEEL
	36	22141	1	SAFETY LABEL
	37	26184	2	ADAPTER INSERT, GEN 3B 3000 SERIES

MOTOR PINION IS PART OF GEAR TRAIN ASSEMBLY (SHOWN FOR CLARITY) LUBRICATE INTERNAL O-RING PER NOTE #3 AND SLIDE PINION ONTO MOTOR SHAFT UNTIL O-RING SEATS IN GROOVE.

THIS SCREW IS ALREADY ASSEMBLED INSIDE OF GEAR CARRIER ASSEMBLY (SHOWN FOR CLARITY) APPLY LOCTITE 243 (BLUE) TIGHTEN TO 40 Nm (30 FT-LBS)

APPLY LOCTITE 243 (BLUE) TIGHTEN TO 1.7 Nm (15 IN-LBS.) 6 PLACES

APPLY LOCTITE 243 (BLUE) TIGHTEN TO .56 Nm (5 IN-LBS.) 2 PLACES

APPLY LOCTITE 243 (BLUE) TIGHTEN TO 1 Nm (9 IN-LBS.) 5 PLACES

APPLY LOCTITE 243 (BLUE) TIGHTEN TO 1 Nm (9 IN-LBS.) 4 PLACES

ASSEMBLE THRU GROUND TERMINAL NO LOCTITE TIGHTEN TO 1 Nm (9 IN-LBS.)

LUBRICATE MOTOR SPLINE SHAFT PER NOTE #1

APPLY LOCTITE 243 (BLUE) TIGHTEN TO 1.0 Nm (9 IN-LBS.) 4 PLACES

APPLY LOCTITE 243 (BLUE) TIGHTEN TO 1Nm(9 IN-LBS.) 2 PLACES

APPLY LOCTITE 243 (BLUE) TIGHTEN TO .56 Nm (5 IN-LBS.) 2 PLACES

APPLY LOCTITE 243 (BLUE) TIGHTEN TO 1 Nm (9 IN-LBS.) 5 PLACES

APPLY LOCTITE 243 (BLUE) TIGHTEN TO 1.7 Nm(15 IN-LBS.) 2 PLACES

APPLY LOCTITE 243 (BLUE) TIGHTEN TO 1.0 Nm (9 IN-LBS.) 4 PLACES

POSITION TOOL CONNECTOR KEYWAY 90° FROM TOOL LEVER, AS SHOWN

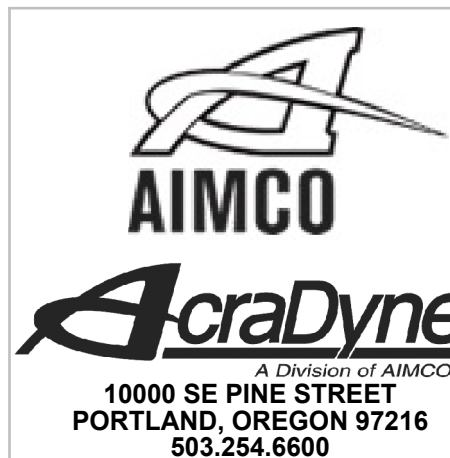
ASSEMBLY INSTRUCTIONS

SUB-ASSEMBLY

- GEARS & SPLINES: LUBRICATE WITH DOW CORNING MOLYKOTE BR2 PLUS GREASE.
- BEARINGS: LUBRICATE WITH CHEVRON SR1 GREASE
- O-RINGS: LUBRICATE WITH O-RING LUBE

PRESS FLUSH TO BELOW MOTOR HOUSING DIAMETER

REQUIRED TOOLING
LOCTITE 243 (BLUE)
1/16 HEX WRENCH
5/64 HEX WRENCH
3/32 HEX WRENCH
7/32 HEX WRENCH
SNAP RING PLIERS - EXTERNAL TYPE



**DOCUMENT CONTROL**  
PRINTED COPIES OF THIS DOCUMENT ARE CONSIDERED TO BE UNCONTROLLED DOCUMENTS. HOLDERS ARE RESPONSIBLE FOR VERIFYING THE CURRENT REVISION LEVEL WITH PURCHASING OR ENGINEERING PRIOR TO USE OR FABRICATION. THE CONTROLLED VERSION OF THIS DOCUMENT IS ELECTRONICALLY MAINTAINED.

**PROPRIETARY AND CONFIDENTIAL**  
THIS DRAWING CONTAINS INFORMATION STRICTLY CONFIDENTIAL TO ACRADYNE/AIMCO. IN THE ABSENCE OF EXPRESSED WRITTEN PERMISSION, ACRADYNE/AIMCO HAS LOANED THIS COPY WITH THE MUTUAL UNDERSTANDING THAT (A) IT WILL NOT BE USED FOR ANY PURPOSE OTHER THAN FOR THAT IN WHICH IT WAS PROVIDED, (B) THE DATA CONTAINED HEREIN WILL NOT BE DISCLOSED TO OTHERS, (C) IT WILL NOT BE REPRODUCED, AND (D) IT WILL BE RETURNED TO ACRADYNE/AIMCO IMMEDIATELY UPON DEMAND.

REVISION LEVEL	REVISION RELEASE DATE	DESCRIPTION OF CHANGES MADE TO PART	ECN #	AUTHOR/ APPROVAL
REVISION BLOCK				

UNLESS OTHERWISE SPECIFIED, DIMENSIONS ARE IN INCHES DIMENSIONS AND TOLERANCING PER ANSI Y14.5 SURFACE ROUGHNESS PER ANSI Y14.36

BLOCK TOLERANCING PER DECIMAL:  
X = ±.030 XX = ±.010 .XXX = ±.005 .XXXX = ±.0005  
ANGLE = ±0° 30'

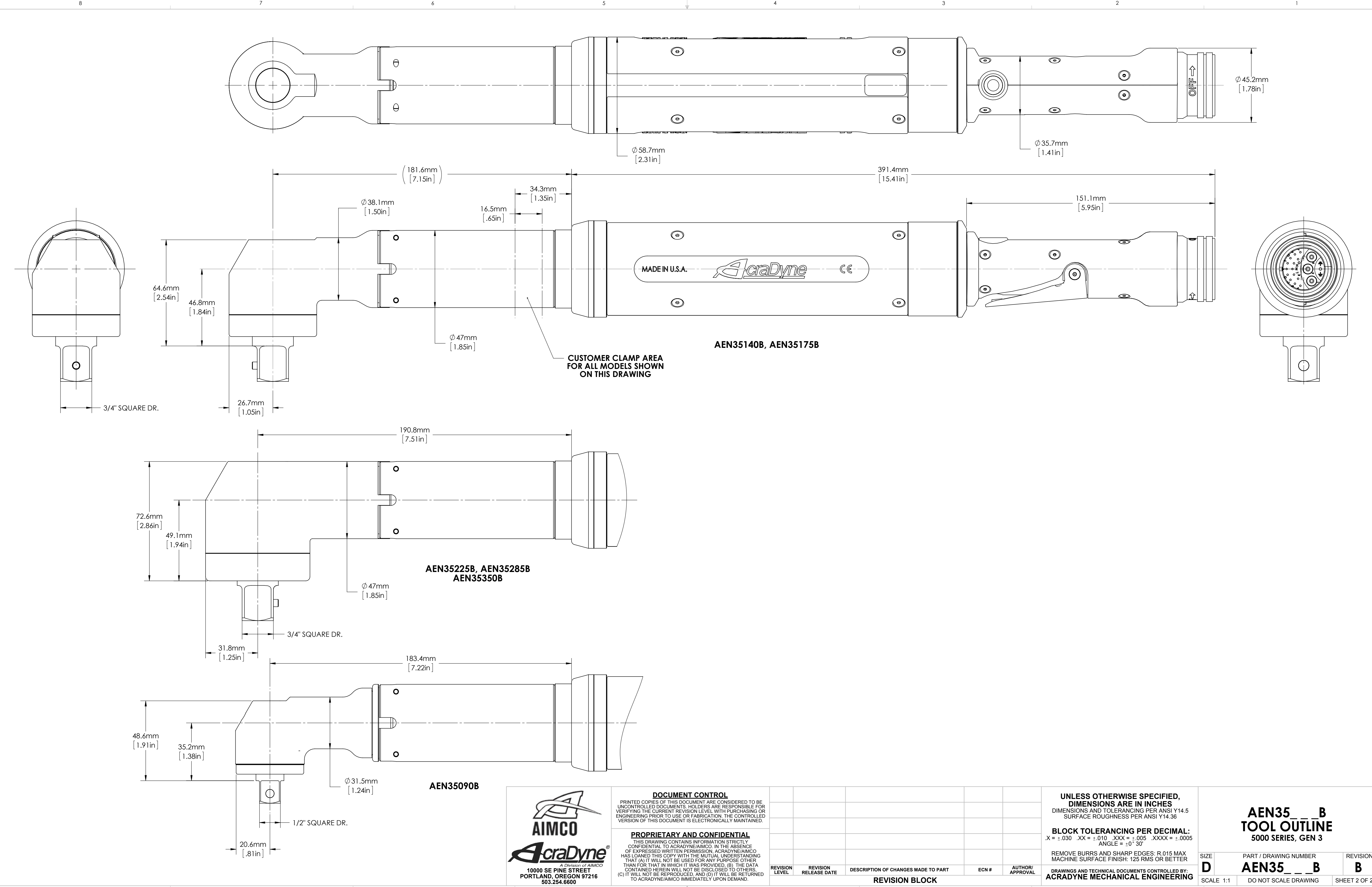
REMOVE BURRS AND SHARP EDGES: R.015 MAX MACHINE SURFACE FINISH: 125 RMS OR BETTER  
DRAWINGS AND TECHNICAL DOCUMENTS CONTROLLED BY:  
ACRADYNE MECHANICAL ENGINEERING

AEN35\_\_B ANGLE NUTRUNNER 5000 SERIES, GEN 3

SIZE	PART / DRAWING NUMBER	REVISION
D	AEN35__B	B

SCALE: 3:4 DO NOT SCALE DRAWING SHEET 1 OF 2





Ø58.7mm  
[2.31in]

Ø35.7mm  
[1.41in]

Ø45.2mm  
[1.78in]

(181.6mm)  
[7.15in]

391.4mm  
[15.41in]

151.1mm  
[5.95in]

Ø38.1mm  
[1.50in]

16.5mm  
[.65in]

34.3mm  
[1.35in]

MADE IN U.S.A. *AcraDyne* CE

AEN35140B, AEN35175B

CUSTOMER CLAMP AREA  
FOR ALL MODELS SHOWN  
ON THIS DRAWING

Ø47mm  
[1.85in]

64.6mm  
[2.54in]

46.8mm  
[1.84in]

3/4" SQUARE DR.

26.7mm  
[1.05in]

190.8mm  
[7.51in]

72.6mm  
[2.86in]

49.1mm  
[1.94in]

AEN35225B, AEN35285B  
AEN35350B

Ø47mm  
[1.85in]

3/4" SQUARE DR.

31.8mm  
[1.25in]

183.4mm  
[7.22in]

48.6mm  
[1.91in]

35.2mm  
[1.38in]

AEN35090B

Ø31.5mm  
[1.24in]

1/2" SQUARE DR.

20.6mm  
[.81in]



**DOCUMENT CONTROL**  
PRINTED COPIES OF THIS DOCUMENT ARE CONSIDERED TO BE UNCONTROLLED DOCUMENTS. HOLDERS ARE RESPONSIBLE FOR VERIFYING THE CURRENT REVISION LEVEL WITH PURCHASING OR ENGINEERING PRIOR TO USE OR FABRICATION. THE CONTROLLED VERSION OF THIS DOCUMENT IS ELECTRONICALLY MAINTAINED.

**PROPRIETARY AND CONFIDENTIAL**  
THIS DRAWING CONTAINS INFORMATION STRICTLY CONFIDENTIAL TO ACRADYNE/AIMCO. IN THE ABSENCE OF EXPRESSED WRITTEN PERMISSION, ACRADYNE/AIMCO HAS LOANED THIS COPY WITH THE MUTUAL UNDERSTANDING THAT (A) IT WILL NOT BE USED FOR ANY PURPOSE OTHER THAN FOR THAT IN WHICH IT WAS PROVIDED, (B) THE DATA CONTAINED HEREIN WILL NOT BE DISCLOSED TO OTHERS, (C) IT WILL NOT BE REPRODUCED, AND (D) IT WILL BE RETURNED TO ACRADYNE/AIMCO IMMEDIATELY UPON DEMAND.

REVISION LEVEL	REVISION RELEASE DATE	DESCRIPTION OF CHANGES MADE TO PART	ECN #	AUTHOR/ APPROVAL

**UNLESS OTHERWISE SPECIFIED, DIMENSIONS ARE IN INCHES**  
DIMENSIONS AND TOLERANCING PER ANSI Y14.5  
SURFACE ROUGHNESS PER ANSI Y14.36

**BLOCK TOLERANCING PER DECIMAL:**  
X = ±.030 .XX = ±.010 .XXX = ±.005 .XXXX = ±.0005  
ANGLE = ±0° 30'

REMOVE BURRS AND SHARP EDGES: R.015 MAX  
MACHINE SURFACE FINISH: 125 RMS OR BETTER

DRAWINGS AND TECHNICAL DOCUMENTS CONTROLLED BY:  
**ACRADYNE MECHANICAL ENGINEERING**

<b>AEN35__B TOOL OUTLINE 5000 SERIES, GEN 3</b>		
SIZE <b>D</b>	PART / DRAWING NUMBER <b>AEN35__B</b>	REVISION <b>B</b>
SCALE: 1:1	DO NOT SCALE DRAWING	SHEET 2 OF 2