

MODEL NO.	GEAR CASE SUB-ASM	TRANSDUCER SUB-ASM.
AEN4F22029CVDL	24901	31048.004
AEN4F22036CVDL	24894	31045.001
AEN4F22043CVDL	24902	31045.003
AEN4F22055CVDL	24904	31045.005

COMMENTS	ITEM NO.	PART NUMBER	QTY.	DESCRIPTION
	1	28766	1	MOTOR ASSEMBLY
	2	SEE CHART	1	GEAR CASE SUB-ASM.
	3	31457	1	ANGLE HEAD ASM.
	4	28754	1	LEVER HANDLE
	5	29186	1	COVER, LEVER HANDLE
	6	25763	1	TRANSDUCER ADAPTOR
	7	24780	1	MOTOR COUPLER SUB-ASM.
	8	SEE CHART	1	TRANSDUCER SUB-ASM.
	9	29202	1	TRIGGER CABLE ASM., 6 PIN - 6 PIN
	10	29191	1	TRIGGER/MFG BOARD ASM., 2000-SERIES, GEN 4
	11	28767	1	TOOL CONN. ASM.
	12	30966	1	LED BOARD ASM, I2C
	13	24679	1	RETAINING RNG
	14	24683	1	SPRING, REV BUTTON
	15	25557	1	REV BUTTON SUB-ASSEMBLY
	16	31063	1	HALL SWITCH ASM., DUAL LEVER TOOL
	17	25868	2	SCREW, PLASTITE, PH TORX, M2.5 X 1.06 X 5, STEEL
	18	29194	1	DUAL LEVER MOTOR COVER
	19	20132	2	THROTTLE SPRING
	20	29189	2	TRIGGER SUB-ASM.
	21	31051	2	DOWEL PIN, Ø.094 X .75, GROOVED, STEEL, ZINC PLATED
	22	31061	2	DOWEL PIN, Ø3/32 X 1/4, STEEL
	23	29184	2	DOWEL PIN, Ø.094 X .25, PLASTIC
	24	28760	1	LED COVER
	25	28753	1	MOTOR COVER, SMALL MOTOR O.D.
	26	22141	1	SAFETY LABEL
	27	27235	2	O-RING, BUNA-N, #28
	28	23753	8	SCREW, FHSC 6-32x5/16, 18-8 SS
	29	25745	5	SCREW, BHSC 4-40 STEEL, BLACK OXIDE
	30	24935	2	SCREW, SHC 4-40 X .25, STEEL, BLACK OXIDE
	31	26078	4	SCREW, SHC 4-40 X 5/16, BLK OXIDE
	32	21091	A/R	SHIM, PINION SHAFT, .002 --- 2000 SERIES
	33	21092	A/R	SHIM, PINION SHAFT, .005 --- 2000 SERIES
	34	21093	A/R	SHIM, PINION SHAFT, .010 --- 2000 SERIES
	35	23741	1	SHIM, OUTPUT, .002 IN, 40 NM
	36	21022	1	SHIM, BLANK OUTPUT SHAFT, 0.005 THK
	37	21021	1	SHIM, BLANK OUTPUT SHAFT, 0.010 THK
	38	20534	1	2000 SERIAL/MODEL LABEL
NOT SHOWN	39	28257	A/R	CABLE TIE, 1.65mm X 71mm
NOT SHOWN	40	25471	1	LABEL SN# COVER, .25 X 4"

- ◆ ASSEMBLY INSTRUCTIONS
 - ◊ SUB-ASSEMBLY
- 1) GEARS & SPLINES: LUBRICATE WITH DOW CORNING MOLYKOTE BR2 PLUS GREASE.
 - 2) BEARINGS: LUBRICATE WITH CHEVRON SR1 GREASE
 - 3) O-RINGS: LUBRICATE WITH O-RING LUBE
 - 4) APPLY LOCTITE 222 (PURPLE), TIGHTEN TO 1.0 Nm (9 IN-LBS)



DOCUMENT CONTROL
 PRINTED COPIES OF THIS DOCUMENT ARE CONSIDERED TO BE UNCONTROLLED DOCUMENTS. HOLDERS ARE RESPONSIBLE FOR VERIFYING THE CURRENT REVISION LEVEL WITH PURCHASING OR ENGINEERING PRIOR TO USE OR FABRICATION. THE CONTROLLED VERSION OF THIS DOCUMENT IS ELECTRONICALLY MAINTAINED.

PROPRIETARY AND CONFIDENTIAL
 THIS DRAWING CONTAINS INFORMATION STRICTLY CONFIDENTIAL TO ACRADYNE/AIMCO. IN THE ABSENCE OF EXPRESSED WRITTEN PERMISSION, ACRADYNE/AIMCO HAS LOANED THIS COPY WITH THE MUTUAL UNDERSTANDING THAT (A) IT WILL NOT BE USED FOR ANY PURPOSE OTHER THAN FOR THAT IN WHICH IT WAS PROVIDED, (B) THE DATA CONTAINED HEREIN WILL NOT BE DISCLOSED TO OTHERS, (C) IT WILL NOT BE REPRODUCED, AND (D) IT WILL BE RETURNED TO ACRADYNE/AIMCO IMMEDIATELY UPON DEMAND.

REVISION LEVEL	REVISION RELEASE DATE	DESCRIPTION OF CHANGES MADE TO PART	ECN #	AUTHOR/ APPROVAL

UNLESS OTHERWISE SPECIFIED, DIMENSIONS ARE IN INCHES
 DIMENSIONS AND TOLERANCING PER ANSI Y14.5 SURFACE ROUGHNESS PER ANSI Y14.36

BLOCK TOLERANCING PER DECIMAL:
 X = ±.030 XX = ±.010 XXX = ±.005 XXXX = ±.0005
 ANGLE = ±0°30'

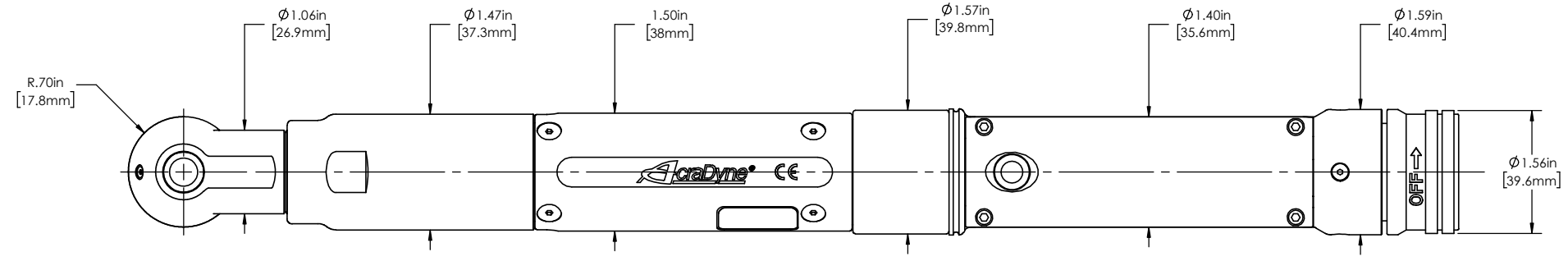
REMOVE BURRS AND SHARP EDGES: R.015 MAX MACHINE SURFACE FINISH: 125 RMS OR BETTER

DRAWINGS AND TECHNICAL DOCUMENTS CONTROLLED BY:
ACRADYNE MECHANICAL ENGINEERING

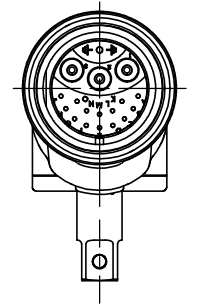
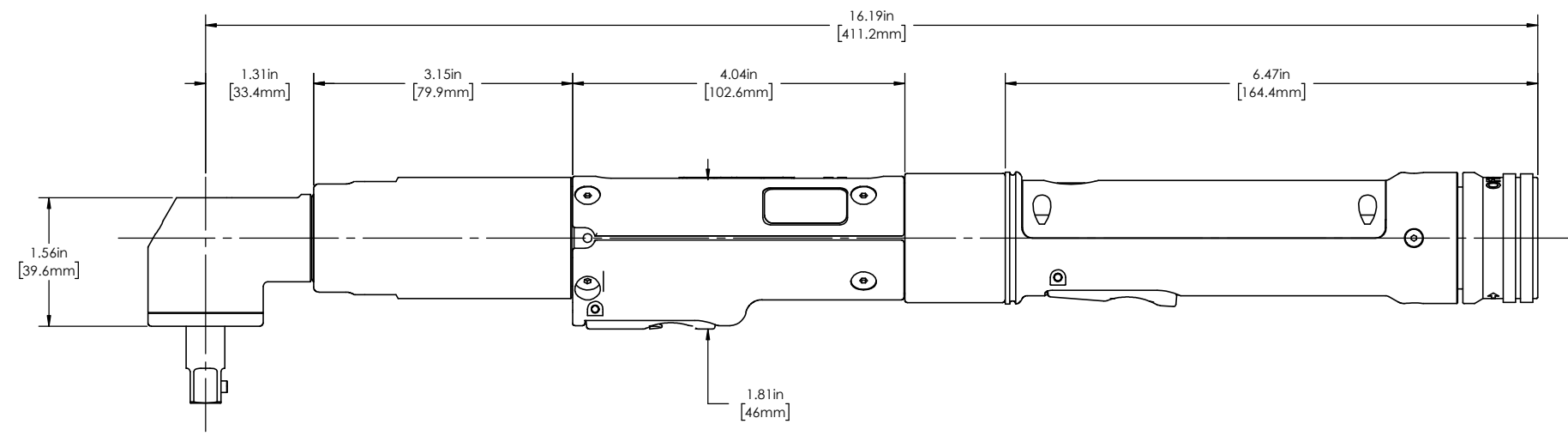
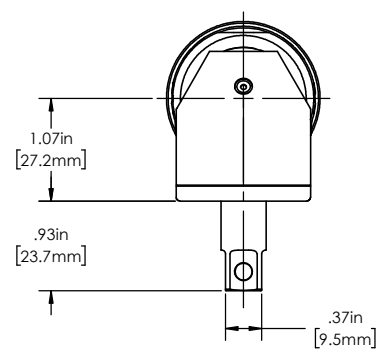
ANGLE NUTRUNNER, DUAL LEVER, EXT. OUTPUT, 3/8" SQ. DRIVE
 GEN 4 2000-SERIES

SIZE	PART / DRAWING NUMBER	REVISION
D	AEN4F220_CVDL	A

SCALE: 1:1 DO NOT SCALE DRAWING SHEET 1 OF 2



TOOL MODEL NO.
AEN4F22029CVDL
AEN4F22036CVDL
AEN4F22043CVDL
AEN4F22055CVDL



DOCUMENT CONTROL
 PRINTED COPIES OF THIS DOCUMENT ARE CONSIDERED TO BE UNCONTROLLED DOCUMENTS. HOLDERS ARE RESPONSIBLE FOR VERIFYING THE CURRENT REVISION LEVEL WITH PURCHASING OR ENGINEERING PRIOR TO USE OR FABRICATION. THE CONTROLLED VERSION OF THIS DOCUMENT IS ELECTRONICALLY MAINTAINED.

PROPRIETARY AND CONFIDENTIAL
 THIS DRAWING CONTAINS INFORMATION STRICTLY CONFIDENTIAL TO ACRADYNE/AIMCO. IN THE ABSENCE OF EXPRESSED WRITTEN PERMISSION, ACRADYNE/AIMCO HAS LOANED THIS COPY WITH THE MUTUAL UNDERSTANDING THAT (A) IT WILL NOT BE USED FOR ANY PURPOSE OTHER THAN FOR THAT IN WHICH IT WAS PROVIDED, (B) THE DATA CONTAINED HEREIN WILL NOT BE DISCLOSED TO OTHERS, (C) IT WILL NOT BE REPRODUCED, AND (D) IT WILL BE RETURNED TO ACRADYNE/AIMCO IMMEDIATELY UPON DEMAND.

REVISION LEVEL	REVISION RELEASE DATE	DESCRIPTION OF CHANGES MADE TO PART	ECN #	APPROVAL

REVISION BLOCK

UNLESS OTHERWISE SPECIFIED, DIMENSIONS ARE IN INCHES
 DIMENSIONS AND TOLERANCING PER ANSI Y14.5
 SURFACE ROUGHNESS PER ANSI Y14.36

BLOCK TOLERANCING PER DECIMAL:
 .X = ±.030 .XX = ±.010 .XXX = ±.005 .XXXX = ±.0005
 ANGLE = ±0° 30'

REMOVE BURRS AND SHARP EDGES: R.015 MAX
 MACHINE SURFACE FINISH: 125 RMS OR BETTER

DRAWINGS AND TECHNICAL DOCUMENTS CONTROLLED BY:
 ACRADYNE MECHANICAL ENGINEERING

ANGLE NUTRUNNER, DUAL LEVER, EXT. OUTPUT, 3/8" SQ. DRIVE
 GEN 4 2000-SERIES

SIZE	PART / DRAWING NUMBER	REVISION
D	AEN4F220_CVDL	A
SCALE: 1:1	DO NOT SCALE DRAWING	SHEET 2 OF 2