

MODEL NO.	GEAR CASE SUB-ASM	ANGLEHEAD ASM.	TRANSDUCER SUB-ASM.	SHIMS
AEN4C22014CV	24860	25769	31048.001	24855/24856/24857
AEN4C22024CV	24709	25769	31048.003	24855/24856/24857
AEN4F22029CV	24901	31457	31048.004	21091/21092/21093
AEN4F22036CV	24894	31457	31045.001	21091/21092/21093
AEN4F22043CV	24902	31457	31045.003	21091/21092/21093
AEN4F22055CV	24904	31457	31045.005	21091/21092/21093

COMMENTS	ITEM NO.	PART NUMBER	QTY.	DESCRIPTION
	1	28766	1	MOTOR ASSEMBLY
	2	SEE CHART	1	GEAR CASE SUB-ASM.
	3	SEE CHART	1	ANGLE HEAD ASM.
	4	28754	1	LEVER HANDLE
	5	29186	1	COVER, LEVER HANDLE
	6	25763	1	TRANSDUCER ADAPTOR
	7	24780	1	MOTOR COUPLER SUB-ASM.
	8	SEE CHART	1	TRANSDUCER SUB-ASM.
	9	29202	1	TRIGGER CABLE ASM., 6 PIN - 6 PIN
	10	29191	1	TRIGGER/MFG BOARD ASM., 2000-SERIES, GEN 4
	11	28767	1	TOOL CONN. ASM.
	12	30966	1	LED BOARD ASM, I2C
	13	24679	1	RETAINING RNG
	14	24683	1	SPRING, REV BUTTON
	15	25557	1	REV BUTTON SUB-ASSEMBLY
	16	29189	1	TRIGGER SUB-ASM.
	17	31051	1	DOWEL PIN, Ø.094 X .75, GROOVED, STEEL, ZINC PLATED
	18	31061	2	DOWEL PIN, Ø3/32 X 1/4, STEEL
	19	29184	2	DOWEL PIN, Ø.094 X .25, PLASTIC
	20	28760	1	LED COVER
	21	28753	2	MOTOR COVER, SMALL MOTOR O.D.
	22	22141	1	SAFETY LABEL
	23	20132	1	THROTTLE SPRING
	24	27235	2	O-RING, BUNA-N, #28
	25	23753	8	SCREW, FHSC 6-32x5/16, 18-8 SS
	26	25745	5	SCREW, BHSC 4-40 STEEL, BLACK OXIDE
	27	24935	2	SCREW, SHC 4-40 X .25, STEEL, BLACK OXIDE
	28	26078	4	SCREW, SHC 4-40 X 5/16, BLK OXIDE
AEN4C TOOLS ONLY	29	24855	A/R	SHIM .1MM, 14MM ID X 20MM OD
AEN4C TOOLS ONLY	30	24856	A/R	SHIM .2MM, 14MM ID X 20MM OD
AEN4C TOOLS ONLY	31	24857	A/R	SHIM .3MM, 14MM ID X 20MM OD
AEN4F TOOLS ONLY	32	21091	A/R	SHIM, PINION SHAFT, .002 --- 2000 SERIES
AEN4F TOOLS ONLY	33	21092	A/R	SHIM, PINION SHAFT, .005 --- 2000 SERIES
AEN4F TOOLS ONLY	34	21093	A/R	SHIM, PINION SHAFT, .010 --- 2000 SERIES
	35	23741	1	SHIM, OUTPUT, .002 IN, 40 NM
	36	21022	1	SHIM, BLANK OUTPUT SHAFT, 0.005 THK
	37	21021	1	SHIM, BLANK OUTPUT SHAFT, 0.010 THK
	38	20534	1	2000 SERIAL/MODEL LABEL
NOT SHOWN	39	28257	A/R	CABLE TIE, 1.65mm X 71mm
NOT SHOWN	40	25471	1	LABEL SN# COVER, .25 X 4"

- ◆ ASSEMBLY INSTRUCTIONS
- ◊ SUB-ASSEMBLY
- 1) GEARS & SPLINES: LUBRICATE WITH DOW CORNING MOLYKOTE BR2 PLUS GREASE.
- 2) BEARINGS: LUBRICATE WITH CHEVRON SR1 GREASE
- 3) O-RINGS: LUBRICATE WITH O-RING LUBE
- 4) APPLY LOCTITE 222 (PURPLE), TIGHTEN TO 1.0 Nm (9 IN-LBS)



DOCUMENT CONTROL
 PRINTED COPIES OF THIS DOCUMENT ARE CONSIDERED TO BE UNCONTROLLED DOCUMENTS. HOLDERS ARE RESPONSIBLE FOR VERIFYING THE CURRENT REVISION LEVEL WITH PURCHASING OR ENGINEERING PRIOR TO USE OR FABRICATION. THE CONTROLLED VERSION OF THIS DOCUMENT IS ELECTRONICALLY MAINTAINED.

PROPRIETARY AND CONFIDENTIAL
 THIS DRAWING CONTAINS INFORMATION STRICTLY CONFIDENTIAL TO ACRADYNE/AIMCO. IN THE ABSENCE OF EXPRESSED WRITTEN PERMISSION, ACRADYNE/AIMCO HAS LOANED THIS COPY WITH THE MUTUAL UNDERSTANDING THAT (A) IT WILL NOT BE USED FOR ANY PURPOSE OTHER THAN FOR THAT IN WHICH IT WAS PROVIDED, (B) THE DATA CONTAINED HEREIN WILL NOT BE DISCLOSED TO OTHERS, (C) IT WILL NOT BE REPRODUCED, AND (D) IT WILL BE RETURNED TO ACRADYNE/AIMCO IMMEDIATELY UPON DEMAND.

A	12/17/21	PRODUCTION RELEASE	6119	T. BURNETT
REVISION LEVEL	REVISION RELEASE DATE	DESCRIPTION OF CHANGES MADE TO PART	ECN #	AUTHOR / APPROVAL
REVISION BLOCK				

UNLESS OTHERWISE SPECIFIED, DIMENSIONS ARE IN INCHES
 DIMENSIONS AND TOLERANCING PER ANSI Y14.5
 SURFACE ROUGHNESS PER ANSI Y14.36

BLOCK TOLERANCING PER DECIMAL:
 X = ±.030 XX = ±.010 XXX = ±.005 XXXX = ±.0005
 ANGLE = ±0°30'

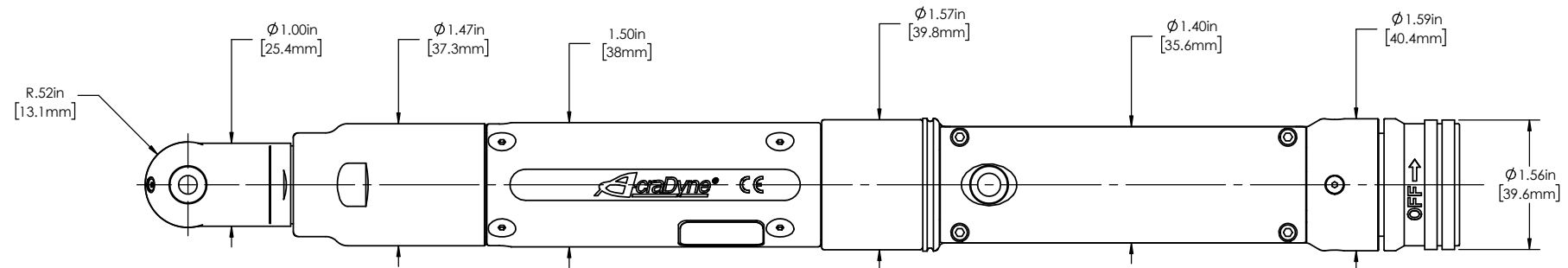
REMOVE BURRS AND SHARP EDGES: R.015 MAX
 MACHINE SURFACE FINISH: 125 RMS OR BETTER

DRAWINGS AND TECHNICAL DOCUMENTS CONTROLLED BY:
ACRADYNE MECHANICAL ENGINEERING

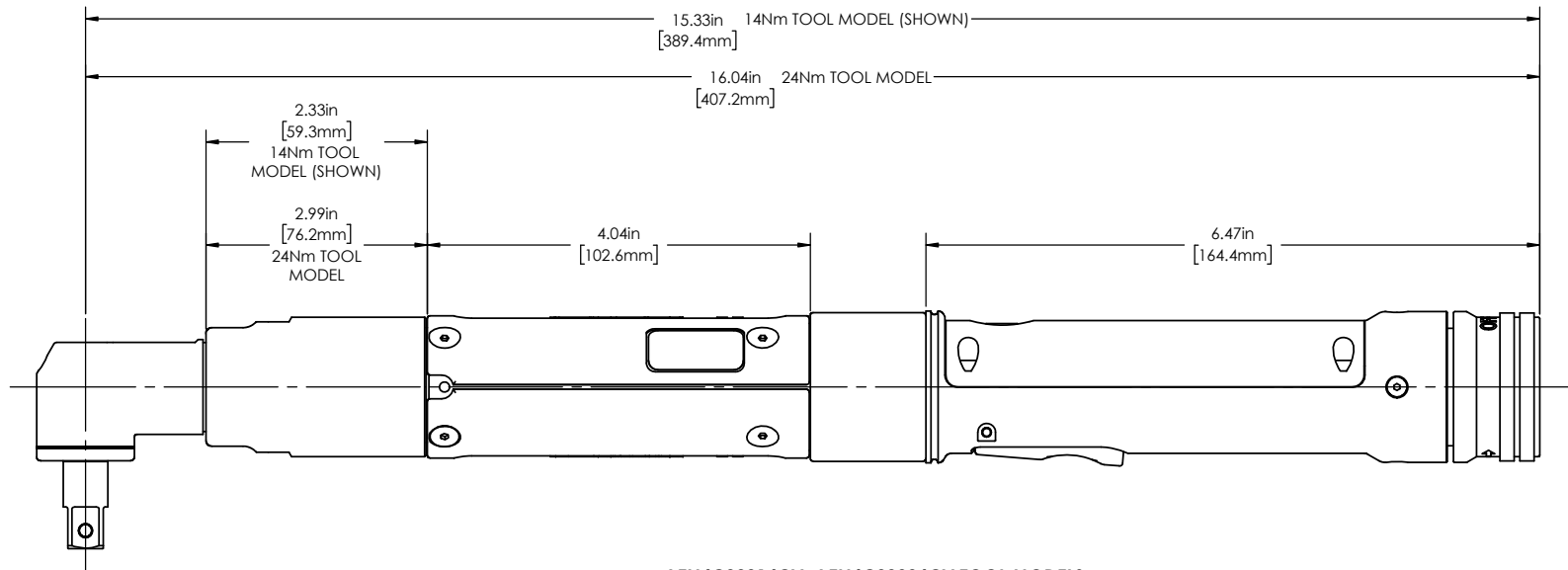
ANGLE NUTRUNNER, EXT. OUTPUT, 3/8" SQ. DR.

GEN 4 2000 SERIES

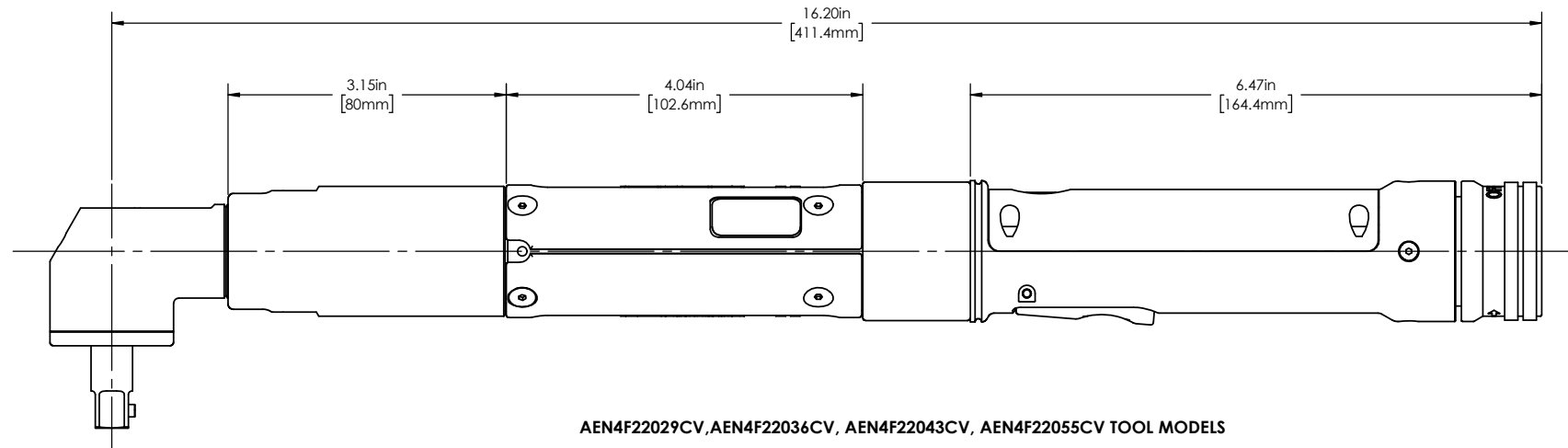
SCALE: 1:1	PART / DRAWING NUMBER	REVISION
DO NOT SCALE DRAWING	AEN4_220_CV	A
SHEET 1 OF 2		



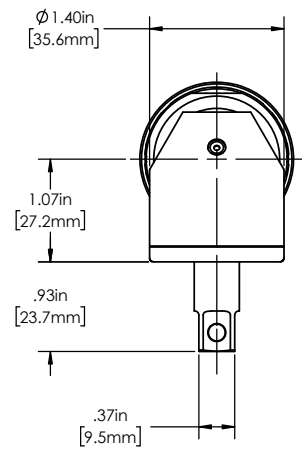
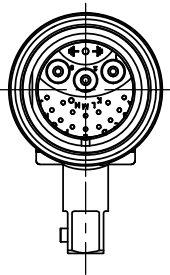
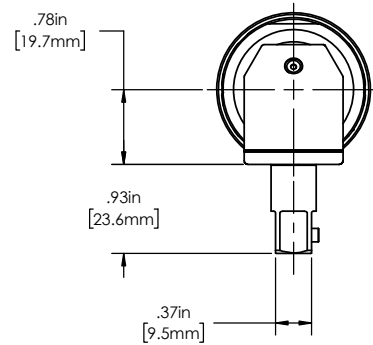
TOOL MODEL NO.
AEN4C22014CV
AEN4C22024CV
AEN4F22029CV
AEN4F22036CV
AEN4F22043CV
AEN4F22055CV



AEN4C22014CV, AEN4C22024CV TOOL MODELS



AEN4F22029CV, AEN4F22036CV, AEN4F22043CV, AEN4F22055CV TOOL MODELS



DOCUMENT CONTROL
 PRINTED COPIES OF THIS DOCUMENT ARE CONSIDERED TO BE UNCONTROLLED DOCUMENTS. HOLDERS ARE RESPONSIBLE FOR VERIFYING THE CURRENT REVISION LEVEL WITH PURCHASING OR ENGINEERING PRIOR TO USE OR FABRICATION. THE CONTROLLED VERSION OF THIS DOCUMENT IS ELECTRONICALLY MAINTAINED.

PROPRIETARY AND CONFIDENTIAL
 THIS DRAWING CONTAINS INFORMATION STRICTLY CONFIDENTIAL TO ACRADYNE/AIMCO. IN THE ABSENCE OF EXPRESSED WRITTEN PERMISSION, ACRADYNE/AIMCO HAS LOANED THIS COPY WITH THE MUTUAL UNDERSTANDING THAT (A) IT WILL NOT BE USED FOR ANY PURPOSE OTHER THAN FOR THAT IN WHICH IT WAS PROVIDED, (B) THE DATA CONTAINED HEREIN WILL NOT BE DISCLOSED TO OTHERS, (C) IT WILL NOT BE REPRODUCED, AND (D) IT WILL BE RETURNED TO ACRADYNE/AIMCO IMMEDIATELY UPON DEMAND.

REVISION LEVEL	REVISION RELEASE DATE	DESCRIPTION OF CHANGES MADE TO PART	ECN #	AUTHOR/ APPROVAL
A	12/17/21	PRODUCTION RELEASE	6119	T. BURNETT

UNLESS OTHERWISE SPECIFIED, DIMENSIONS ARE IN INCHES
 DIMENSIONS AND TOLERANCING PER ANSI Y14.5
 SURFACE ROUGHNESS PER ANSI Y14.36

BLOCK TOLERANCING PER DECIMAL:
 .X = ±.030 .XX = ±.010 .XXX = ±.005 .XXXX = ±.0005
 ANGLE = ±0° 30'

REMOVE BURRS AND SHARP EDGES: R.015 MAX
 MACHINE SURFACE FINISH: 125 RMS OR BETTER

DRAWINGS AND TECHNICAL DOCUMENTS CONTROLLED BY:
ACRADYNE MECHANICAL ENGINEERING

ANGLE NUTRUNNER, EXT. OUTPUT, 3/8" SQ. DR.
 GEN 4 2000-SERIES

SIZE	PART / DRAWING NUMBER	REVISION
D	AEN4 220 CV	A

SCALE: 1:1 DO NOT SCALE DRAWING SHEET 2 OF 2