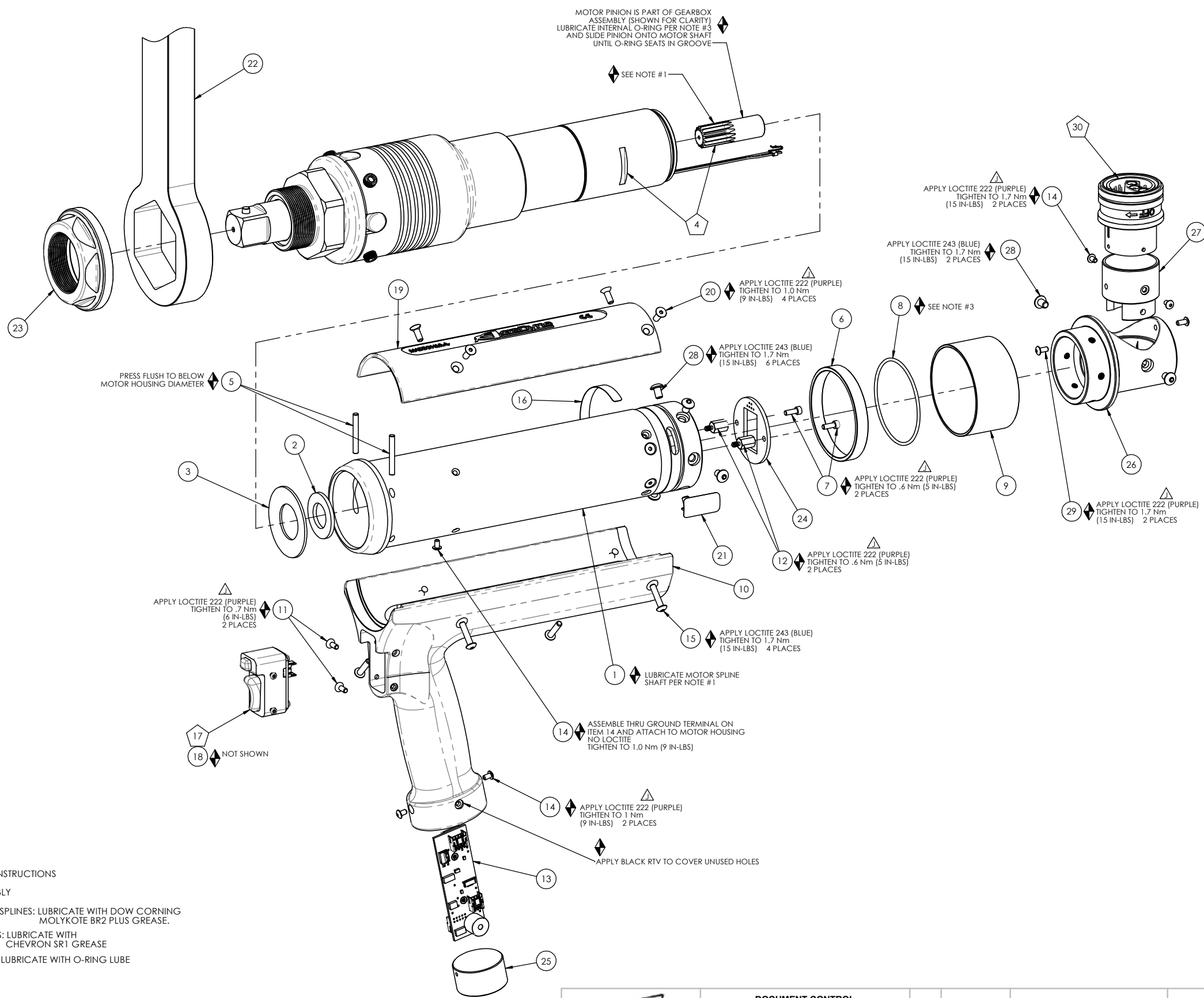


COMMENTS	ITEM NO.	PART NUMBER	QTY.	DESCRIPTION
	1	26213	1	PISTOL MOTOR ASSEMBLY
	2	26198	1	THRUST WASHER
	3	26074	1	BELLEVILLE WASHER
	4	SEE CHART	1	GEARBOX ASM. - TRIPLE STEP
	5	26530	2	DOWEL PIN, $\phi 1/8 \times 1.00$, STEEL
	6	27391	1	PIN RETAINER RING
	7	26078	2	SHC SCREW, 4-40, BLACK OXIDE
	8	26080	1	O-RING, LED LIGHT RING COVER
	9	26079	1	LIGHT RING COVER, LED
	10	26085	1	PISTOL HANDLE
	11	24934	2	SCREW, FHC 4-40 X .312, STEEL, BLACK OXIDE
	12	26077	2	M-F THREADED HEX STANDOFF
	13	25849	1	T.I.D. BOARD ASM., PISTOL
	14	25745	5	SCREW, BHSC 4-40 STEEL, BLACK OXIDE
	15	26089	4	SCREW, BHSC 6-32X.625, STEEL, BLACK OXIDE
	16	20534	1	3000 SERIAL/MODEL LABEL
	17	25212	1	SWITCH SUB-ASSEMBLY
NOT SHOWN	18	25788	1	CABLE ASM., TRIGGER
	19	26081	1	MOTOR HOUSING COVER
	20	25385	4	SCREW, FHSC 6-32 X .375, STEEL
	21	22141	1	SAFETY LABEL
	22	27315	1	REACTION BAR, STEEL, 280-635Nm
	23	23792	1	RETAINING NUT, HEX
	24	26839	1	PISTOL LED BOARD ASM.
	25	26239	1	"J" HANDLE PLUG
	26	26399	1	RIGHT ANGLE ADAPTER
	27	26400	1	SHELL ADAPTER, TOOL CONNECTOR
	28	26088	8	SCREW, BHCS 8-32X.25, STEEL, BLACK OXIDE
	29	25130	2	SCREW, BHSC, 4-40 X 1/4, STEEL
	30	27626	1	TOOL CONNECTOR ASM., PISTOL, TOP EXIT

MODEL NO.	GEARBOX ASM.
AEP35280AT	26202
AEP35350AT	26203
AEP35420AT	26201
AEP35515AT	26200
AEP35635AT	26129



- ◆ ASSEMBLY INSTRUCTIONS
- ◻ SUB-ASSEMBLY
- 1) GEARS & SPLINES: LUBRICATE WITH DOW CORNING MOLYKOTE BR2 PLUS GREASE.
- 2) BEARINGS: LUBRICATE WITH CHEVRON SR1 GREASE
- 3) O-RINGS: LUBRICATE WITH O-RING LUBE

REQUIRED TOOLING
LOCTITE 243 (BLUE)
1/16 HEX WRENCH
5/64 HEX WRENCH
3/32 HEX WRENCH
T6 TORX DRIVER



DOCUMENT CONTROL
 PRINTED COPIES OF THIS DOCUMENT ARE CONSIDERED TO BE UNCONTROLLED DOCUMENTS. HOLDERS ARE RESPONSIBLE FOR VERIFYING THE CURRENT REVISION LEVEL WITH PURCHASING OR ENGINEERING PRIOR TO USE OR FABRICATION. THE CONTROLLED VERSION OF THIS DOCUMENT IS ELECTRONICALLY MAINTAINED.

PROPRIETARY AND CONFIDENTIAL
 THIS DRAWING CONTAINS INFORMATION STRICTLY CONFIDENTIAL TO ACRADYNE/AIMCO. IN THE ABSENCE OF EXPRESSED WRITTEN PERMISSION, ACRADYNE/AIMCO HAS LOANED THIS COPY WITH THE MUTUAL UNDERSTANDING THAT (A) IT WILL NOT BE USED FOR ANY PURPOSE OTHER THAN FOR THAT IN WHICH IT WAS PROVIDED, (B) THE DATA CONTAINED HEREIN WILL NOT BE DISCLOSED TO OTHERS, (C) IT WILL NOT BE REPRODUCED, AND (D) IT WILL BE RETURNED TO ACRADYNE/AIMCO IMMEDIATELY UPON DEMAND.

REVISION	DESCRIPTION	DATE	BY

UNLESS OTHERWISE SPECIFIED, DIMENSIONS ARE IN INCHES
 DIMENSIONS AND TOLERANCING PER ANSI Y14.5 SURFACE ROUGHNESS PER ANSI Y14.36

BLOCK TOLERANCING PER DECIMAL:
 X = ±.030 XX = ±.010 XXX = ±.005 XXXX = ±.0005
 ANGLE = ±0° 30'

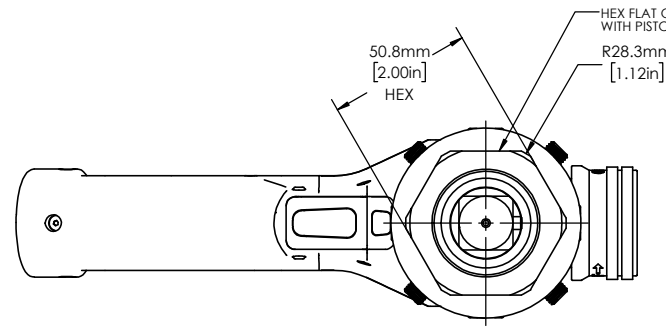
REMOVE BURRS AND SHARP EDGES: R.015 MAX MACHINE SURFACE FINISH: 125 RMS OR BETTER

DRAWINGS AND TECHNICAL DOCUMENTS CONTROLLED BY:
ACRADYNE MECHANICAL ENGINEERING

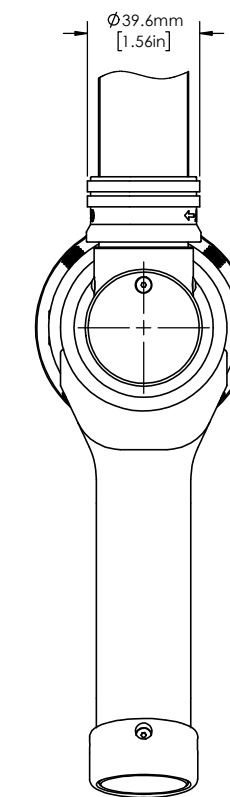
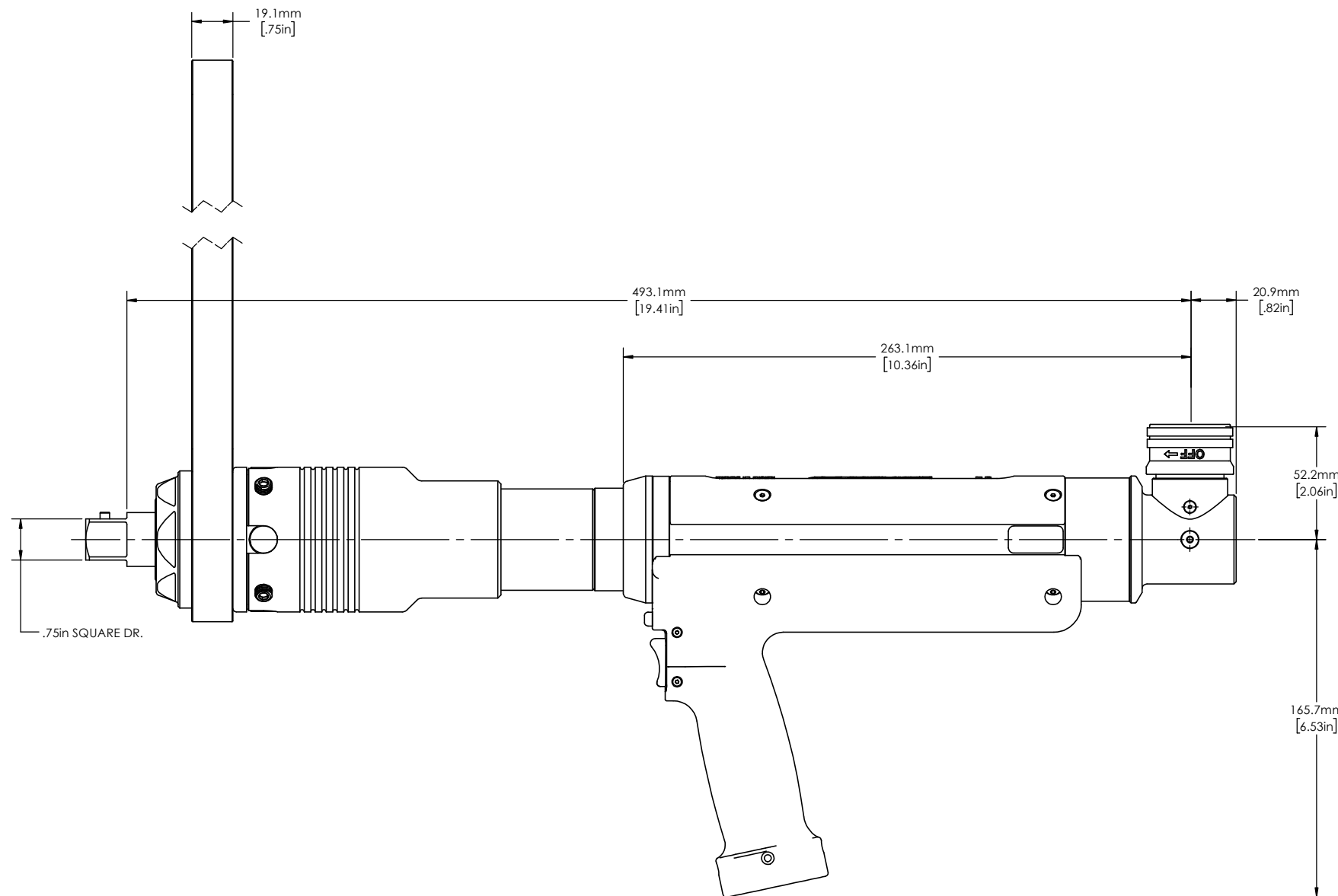
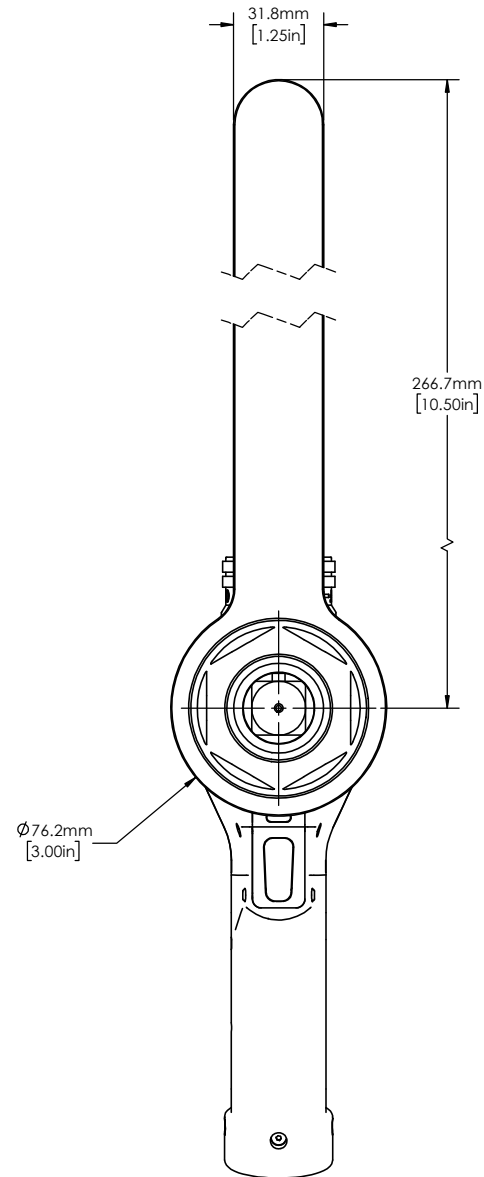
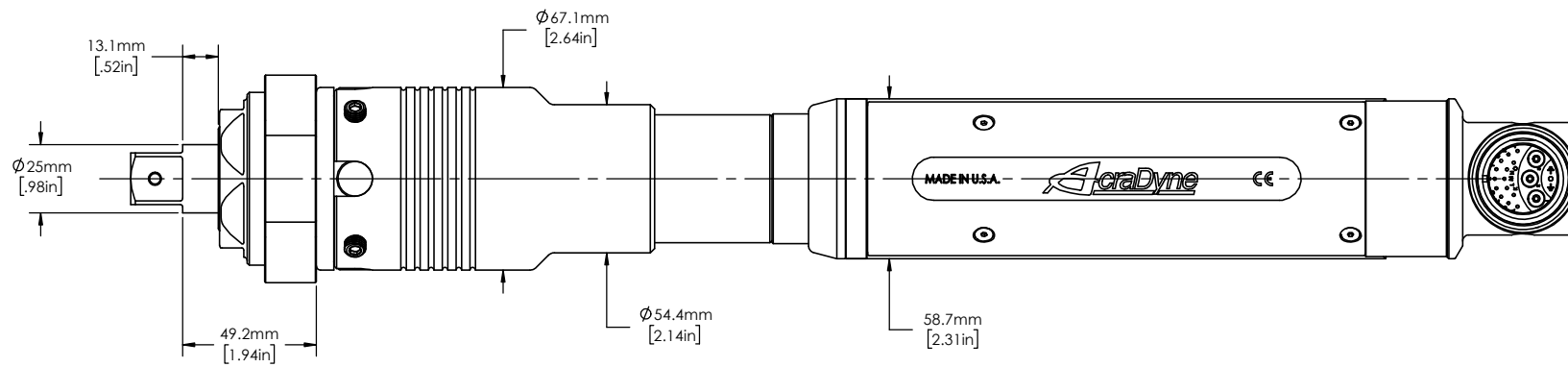
AEP35__A T PISTOL NUTRUNNER 5000 SERIES, GEN 3

SIZE	PART / DRAWING NUMBER	REVISION
D	AEP35__A T	J

SCALE: 3:4 DO NOT SCALE DRAWING SHEET 2 OF 4



SHOWN WITHOUT REACTION BAR AND WITHOUT LOCKNUT



	MODEL NO.
	AEP35280AT
	AEP35350AT
CATALOG NO.	AEP35420AT
	AEP35515AT
	AEP35635AT



DOCUMENT CONTROL
 PRINTED COPIES OF THIS DOCUMENT ARE CONSIDERED TO BE UNCONTROLLED DOCUMENTS. HOLDERS ARE RESPONSIBLE FOR VERIFYING THE CURRENT REVISION LEVEL WITH PURCHASING OR ENGINEERING PRIOR TO USE OR FABRICATION. THE CONTROLLED VERSION OF THIS DOCUMENT IS ELECTRONICALLY MAINTAINED.

PROPRIETARY AND CONFIDENTIAL
 THIS DRAWING CONTAINS INFORMATION STRICTLY CONFIDENTIAL TO ACRADYNE/AIMCO. IN THE ABSENCE OF EXPRESSED WRITTEN PERMISSION, ACRADYNE/AIMCO HAS LOANED THIS COPY WITH THE MUTUAL UNDERSTANDING THAT (A) IT WILL NOT BE USED FOR ANY PURPOSE OTHER THAN FOR THAT IN WHICH IT WAS PROVIDED, (B) THE DATA CONTAINED HEREIN WILL NOT BE DISCLOSED TO OTHERS, (C) IT WILL NOT BE REPRODUCED, AND (D) IT WILL BE RETURNED TO ACRADYNE/AIMCO IMMEDIATELY UPON DEMAND.

UNLESS OTHERWISE SPECIFIED, DIMENSIONS ARE IN INCHES
 DIMENSIONS AND TOLERANCING PER ANSI Y14.5
 SURFACE ROUGHNESS PER ANSI Y14.36

BLOCK TOLERANCING PER DECIMAL:
 .X = ±.030 .XX = ±.010 .XXX = ±.005 .XXXX = ±.0005
 ANGLE = ±0° 30'

REMOVE BURRS AND SHARP EDGES: R.015 MAX
 MACHINE SURFACE FINISH: 125 RMS OR BETTER

DRAWINGS AND TECHNICAL DOCUMENTS CONTROLLED BY:
ACRADYNE MECHANICAL ENGINEERING

AEP35__AT TOOL OUTLINE		
5000 SERIES, GEN 3		
SIZE	PART / DRAWING NUMBER	REVISION
D	AEP35__A T	J
SCALE 3:4	DO NOT SCALE DRAWING	SHEET 4 OF 4

REVISION BLOCK