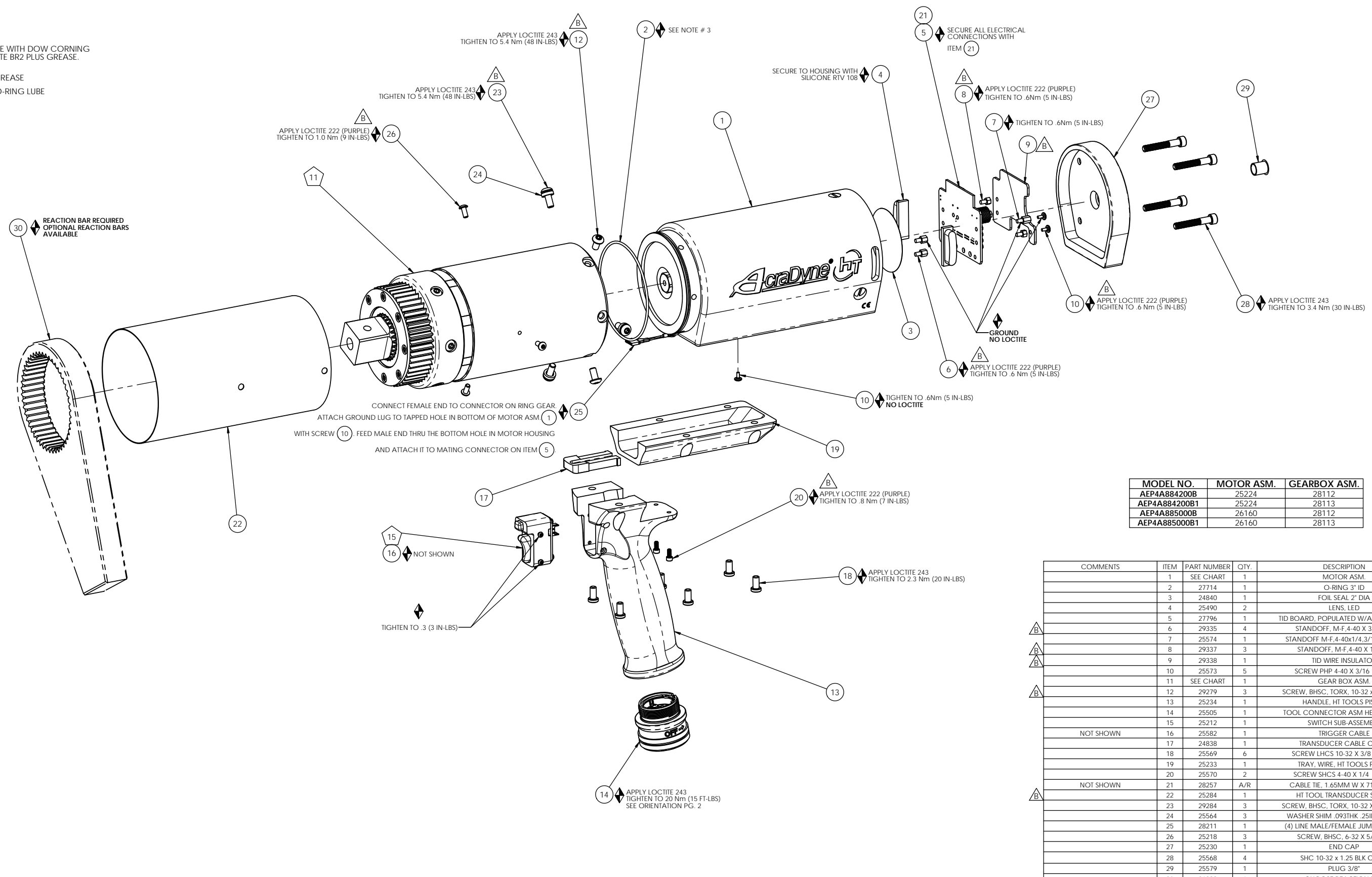


◆ ASSEMBLY INSTRUCTIONS

◇ SUB-ASSEMBLY

- 1) GEARS & SPLINES: LUBRICATE WITH DOW CORNING MOLYKOTE BR2 PLUS GREASE.
- 2) BEARINGS: LUBRICATE WITH CHEVRON SR1 GREASE
- 3) O-RINGS: LUBRICATE WITH O-RING LUBE



MODEL NO.	MOTOR ASM.	GEARBOX ASM.
AEP4A884200B	25224	28112
AEP4A884200B1	25224	28113
AEP4A885000B	26160	28112
AEP4A885000B1	26160	28113

COMMENTS	ITEM	PART NUMBER	QTY.	DESCRIPTION
	1	SEE CHART	1	MOTOR ASM.
	2	27714	1	O-RING 3" ID
	3	24840	1	FOIL SEAL 2" DIA
	4	25490	2	LENS, LED
	5	27796	1	TID BOARD, POPULATED W/AMP CIRCUIT
	6	29335	4	STANDOFF, M-F, 4-40 X 3/16, SS
	7	25574	1	STANDOFF M-F, 4-40x1/4, 3/16 HEX, SS
	8	29337	3	STANDOFF, M-F, 4-40 X 1/8, SS
	9	29338	1	TID WIRE INSULATOR
	10	25573	5	SCREW PHP 4-40 X 3/16 18-8 SS
	11	SEE CHART	1	GEAR BOX ASM
	12	29279	3	SCREW, BHSC, TORX, 10-32 x 3/8, STEEL
	13	25234	1	HANDLE, HT TOOLS PISTOL
	14	25505	1	TOOL CONNECTOR ASM HERC PISTOL
	15	25212	1	SWITCH SUB-ASSEMBLY
	16	25582	1	TRIGGER CABLE
	17	24838	1	TRANSDUCER CABLE CHASE
	18	25569	6	SCREW LHCS 10-32 X 3/8 18-8 SS
	19	25233	1	TRAY, WIRE, HT TOOLS PISTOL
	20	25570	2	SCREW SHCS 4-40 X 1/4 18-8 SS
	21	28257	A/R	CABLE TIE, 1.65MM W X 71MM LG.
	22	25284	1	HT TOOL TRANSDUCER SLEEVE
	23	29284	3	SCREW, BHSC, TORX, 10-32 X 1/2, STEEL
	24	25564	3	WASHER SHIM .093THK .25ID .375OD
	25	28211	1	(4) LINE MALE/FEMALE JUMPER ASM.
	26	25218	3	SCREW, BHSC, 6-32 X 5/16, SS
	27	25230	1	END CAP
	28	25568	4	SHC 10-32 x 1.25 BLK OXIDE
	29	25579	1	PLUG 3/8"
	30	26898	1	CHOOSE REACTION BAR



DOCUMENT CONTROL
 PRINTED COPIES OF THIS DOCUMENT ARE CONSIDERED TO BE UNCONTROLLED DOCUMENTS. HOLDERS ARE RESPONSIBLE FOR VERIFYING THE CURRENT REVISION LEVEL WITH PURCHASING OR ENGINEERING PRIOR TO USE OR FABRICATION. THE CONTROLLED VERSION OF THIS DOCUMENT IS ELECTRONICALLY MAINTAINED.

PROPRIETARY AND CONFIDENTIAL
 THIS DRAWING CONTAINS INFORMATION STRICTLY CONFIDENTIAL TO ACRADYNE/AIMCO. IN THE ABSENCE OF EXPRESSED WRITTEN PERMISSION, ACRADYNE/AIMCO HAS LOANED THIS COPY WITH THE MUTUAL UNDERSTANDING THAT (A) IT WILL NOT BE USED FOR ANY PURPOSE OTHER THAN FOR THAT IN WHICH IT WAS PROVIDED, (B) THE DATA CONTAINED HEREIN WILL NOT BE DISCLOSED TO OTHERS, (C) IT WILL NOT BE REPRODUCED, AND (D) IT WILL BE RETURNED TO ACRADYNE/AIMCO IMMEDIATELY UPON DEMAND.

UNLESS OTHERWISE SPECIFIED, DIMENSIONS ARE IN INCHES
 DIMENSIONS AND TOLERANCING PER ANSI Y14.5 SURFACE ROUGHNESS PER ANSI Y14.36

BLOCK TOLERANCING PER DECIMAL:
 .X = ±.030 .XX = ±.010 .XXX = ±.005 .XXXX = ±.0005 ANGLE = ±0°30'

REMOVE BURRS AND SHARP EDGES: R.015 MAX MACHINE SURFACE FINISH: 125 RMS OR BETTER

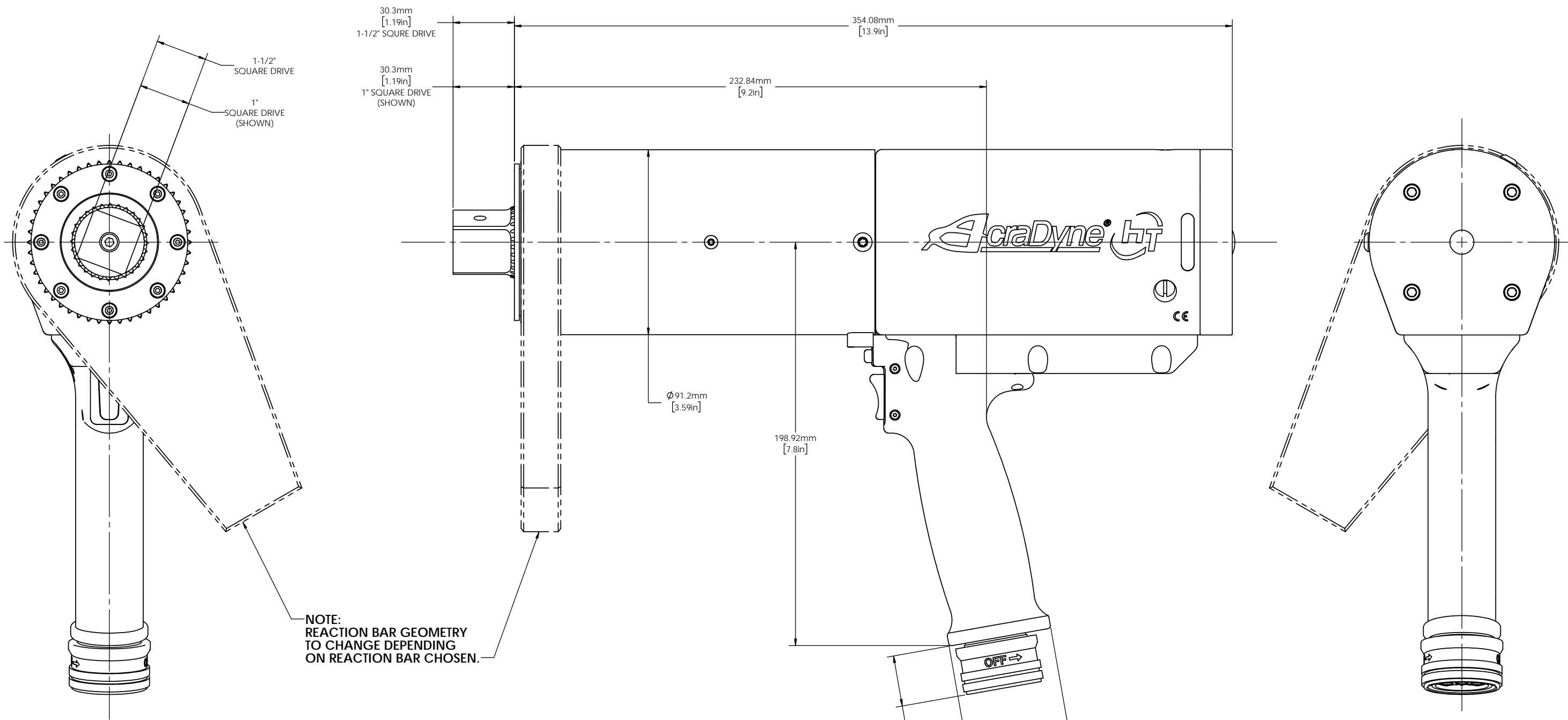
DRAWINGS AND TECHNICAL DOCUMENTS CONTROLLED BY:
ACRADYNE MECHANICAL ENGINEERING

AEP4A88_ _ _ _ B_ PISTOL NUTRUNNER 8000 SERIES

SIZE	PART / DRAWING NUMBER	REVISION
D	AEP4A88_ _ _ _ B_	B

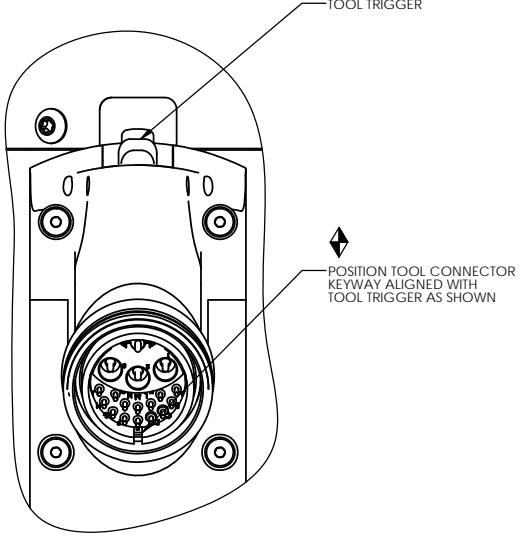
SCALE: 2:3 DO NOT SCALE DRAWING SHEET 1 OF 2

REVISION BLOCK



NOTE:
REACTION BAR GEOMETRY
TO CHANGE DEPENDING
ON REACTION BAR CHOSEN.

MODEL NO.	SQUARE DRIVE
AEP4A884200B	1-1/2"
AEP4A884200B1	1"
AEP4A885000B	1-1/2"
AEP4A885000B1	1"



AIMCO
AcraDyne
10000 SE PINE STREET
PORTLAND, OREGON 97216
503.254.6600

DOCUMENT CONTROL
PRINTED COPIES OF THIS DOCUMENT ARE CONSIDERED TO BE UNCONTROLLED DOCUMENTS. HOLDERS ARE RESPONSIBLE FOR VERIFYING THE CURRENT REVISION LEVEL WITH PURCHASING OR ENGINEERING PRIOR TO USE OR FABRICATION. THE CONTROLLED VERSION OF THIS DOCUMENT IS ELECTRONICALLY MAINTAINED.

PROPRIETARY AND CONFIDENTIAL
THIS DRAWING CONTAINS INFORMATION STRICTLY CONFIDENTIAL TO ACRADYNE/AIMCO. IN THE ABSENCE OF EXPRESSED WRITTEN PERMISSION, ACRADYNE/AIMCO HAS LOANED THIS COPY WITH THE MUTUAL UNDERSTANDING THAT (A) IT WILL NOT BE USED FOR ANY PURPOSE OTHER THAN FOR THAT IN WHICH IT WAS PROVIDED, (B) THE DATA CONTAINED HEREIN WILL NOT BE DISCLOSED TO OTHERS, (C) IT WILL NOT BE REPRODUCED, AND (D) IT WILL BE RETURNED TO ACRADYNE/AIMCO IMMEDIATELY UPON DEMAND.

UNLESS OTHERWISE SPECIFIED, DIMENSIONS ARE IN INCHES
DIMENSIONS AND TOLERANCING PER ANSI Y14.5
SURFACE ROUGHNESS PER ANSI Y14.36

BLOCK TOLERANCING PER DECIMAL:
.X = ±.030 .XX = ±.010 .XXX = ±.005 .XXXX = ±.0005
ANGLE = ±0° 30'

REMOVE BURRS AND SHARP EDGES: R.015 MAX
MACHINE SURFACE FINISH: 125 RMS OR BETTER

DRAWINGS AND TECHNICAL DOCUMENTS CONTROLLED BY:
ACRADYNE MECHANICAL ENGINEERING

PISTOL NUTRUNNER
8000 SERIES

SIZE	PART / DRAWING NUMBER	REVISION
D	AEP4A88 _ _ _ B	B

SCALE: 1:1 DO NOT SCALE DRAWING SHEET 2 OF 2

REVISION BLOCK