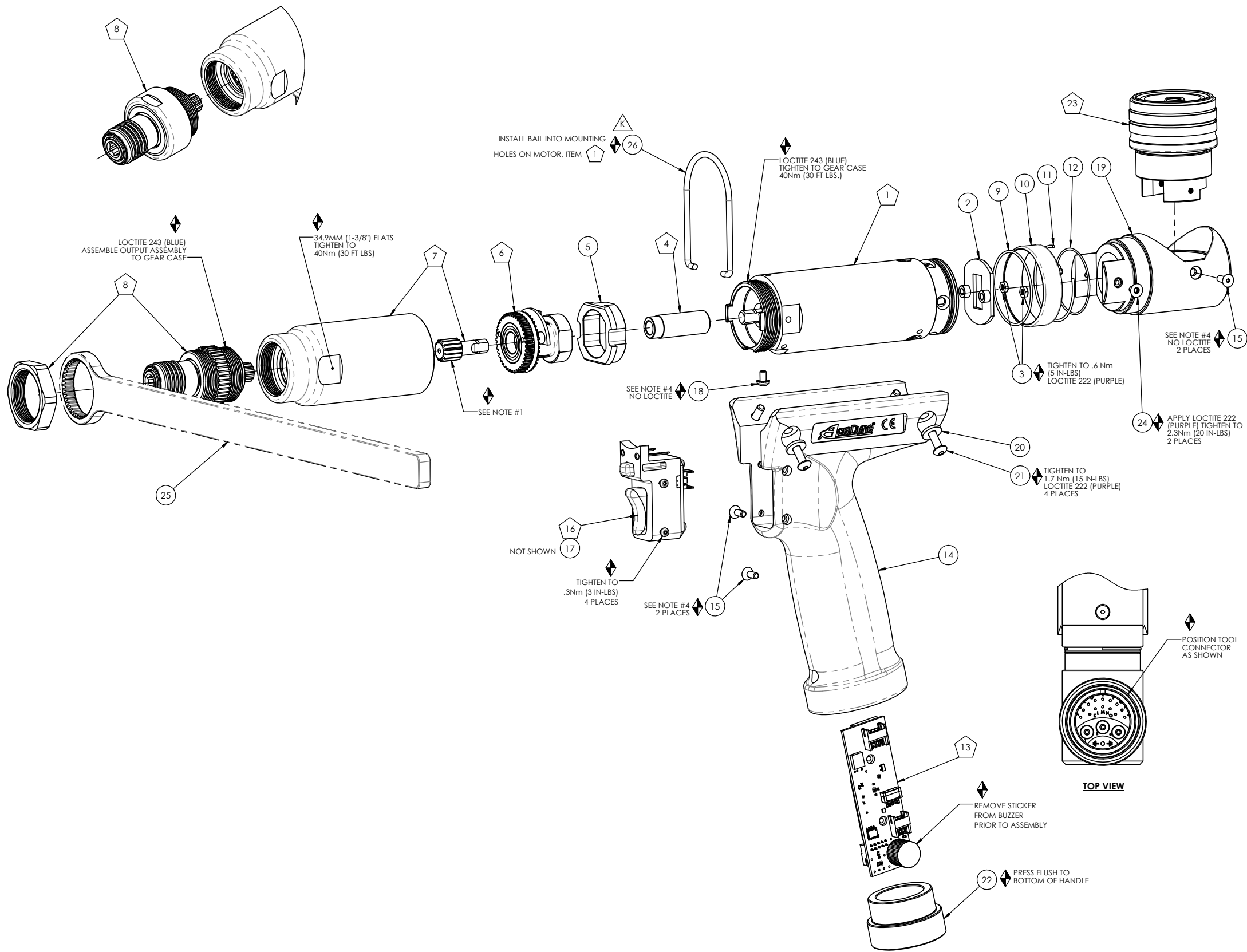


SINGLE STEP MODELS



- ◆ ASSEMBLY INSTRUCTIONS
- ◊ SUB-ASSEMBLY

- 1) GEARS & SPLINES: LUBRICATE WITH DOW CORNING MOLYKOTE BR2 PLUS GREASE.
- 2) BEARINGS: LUBRICATE WITH CHEVRON SRI GREASE
- 3) O-RINGS: LUBRICATE WITH O-RING LUBE
- 4) TIGHTEN TO 1.0 Nm (9 IN-LBS) LOCTITE 222 (PURPLE)

COMMENTS	ITEM NO.	PART NUMBER	QTY.	DESCRIPTION
	1	26218	1	PISTOL MOTOR ASM.
	2	26599	1	LED PCB ASSY, PISTOL
	3	27016	2	NUT, HEX, 4-40 UNDERSIZED, STEEL ZINC
	4	24780	1	MOTOR COUPLER SUB-ASM.
	5	25763	1	TRANSDUCER ADAPTOR
	6	SEE CHART	1	TRANSDUCER SUB-ASM.
	7	SEE CHART	1	GEAR CASE SUB-ASM.
	8	SEE CHART	1	STRAIGHT OUTPUT ASSY, Q.C.
	9	24687	1	O-RING, LIGHT RING, LEVER
	10	24873	1	LIGHT RING
	11	24686	1	RETAINING RING, LEVER LIGHT RING
	12	24731	1	O-RING, RING GEAR
	13	25849	1	TID BOARD ASM., PISTOL, 1000/2000-SERIES
	14	26667	1	PISTOL HANDLE, 1000 SERIES
	15	24934	4	SCREW, FHC 4-40 X .312, STEEL, BLACK OXIDE
	16	25871	1	SWITCH SUB-ASSEMBLY
NOT SHOWN	17	25788	1	CABLE, TRIGGER, GEN 4 PISTOL
	18	25814	1	SCREW, PAN HEAD PHILLIPS, 4-40 X 3/16, STAR WASH, SS
	19	24910	1	RIGHT ANGLE ADAPTOR, TOOL CONN.
	20	26791	4	WASHER, FLAT, NO 6 SCREW, STEEL, BLACK OXIDE
	21	26792	4	SCREW, BHSC 6-32X.50, STEEL, BLACK OXIDE
	22	25798	1	PLUG, PISTOL HANDLE
	23	25889	1	TOOL CONNECTOR ASM., TOP EXIT PISTOL
	24	30771	2	SCREW, FHSC 4-40 X 3/16, STEEL, TORX HEAD
	25	SEE CHART	1	REACTION BAR, 1000 SERIES
	26	010-790-1	1	SUSPENSION BAIL, PISTOL TOOLS

	MODEL NO.	TRANSDUCER ASM.	GEAR CASE ASM.	OUTPUT ASM.	REACTION BAR
SINGLE STEP MODELS	AEP4T12003BQ	25759.001	24860	24896	N/A
	AEP4T12006BQ	25760.002	24860	24896	N/A
DOUBLE STEP MODELS	AEP4T12011BQ	25761.003	24709	27043	24696
	AEP4T12014BQ	25761.005	24792	27043	24697



DOCUMENT CONTROL
 PRINTED COPIES OF THIS DOCUMENT ARE CONSIDERED TO BE UNCONTROLLED DOCUMENTS. HOLDERS ARE RESPONSIBLE FOR VERIFYING THE CURRENT REVISION LEVEL WITH PURCHASING OR ENGINEERING PRIOR TO USE OR FABRICATION. THE CONTROLLED VERSION OF THIS DOCUMENT IS ELECTRONICALLY MAINTAINED.

PROPRIETARY AND CONFIDENTIAL
 THIS DRAWING CONTAINS INFORMATION STRICTLY CONFIDENTIAL TO ACRADYNE/AIMCO. IN THE ABSENCE OF EXPRESSED WRITTEN PERMISSION, ACRADYNE/AIMCO HAS LOANED THIS COPY WITH THE MUTUAL UNDERSTANDING THAT (A) IT WILL NOT BE USED FOR ANY PURPOSE OTHER THAN FOR THAT IN WHICH IT WAS PROVIDED, (B) THE DATA CONTAINED HEREIN WILL NOT BE DISCLOSED TO OTHERS, (C) IT WILL NOT BE REPRODUCED, AND (D) IT WILL BE RETURNED TO ACRADYNE/AIMCO IMMEDIATELY UPON DEMAND.

REVISION LEVEL	REVISION RELEASE DATE	DESCRIPTION OF CHANGES MADE TO PART	ECN #	AUTHOR/ APPROVAL

UNLESS OTHERWISE SPECIFIED, DIMENSIONS ARE IN INCHES
 DIMENSIONS AND TOLERANCING PER ANSI Y14.5 SURFACE ROUGHNESS PER ANSI Y14.36

BLOCK TOLERANCING PER DECIMAL:
 .X = ±.030 .XX = ±.010 .XXX = ±.005 .XXXX = ±.0005
 ANGLE = ±0° 30'

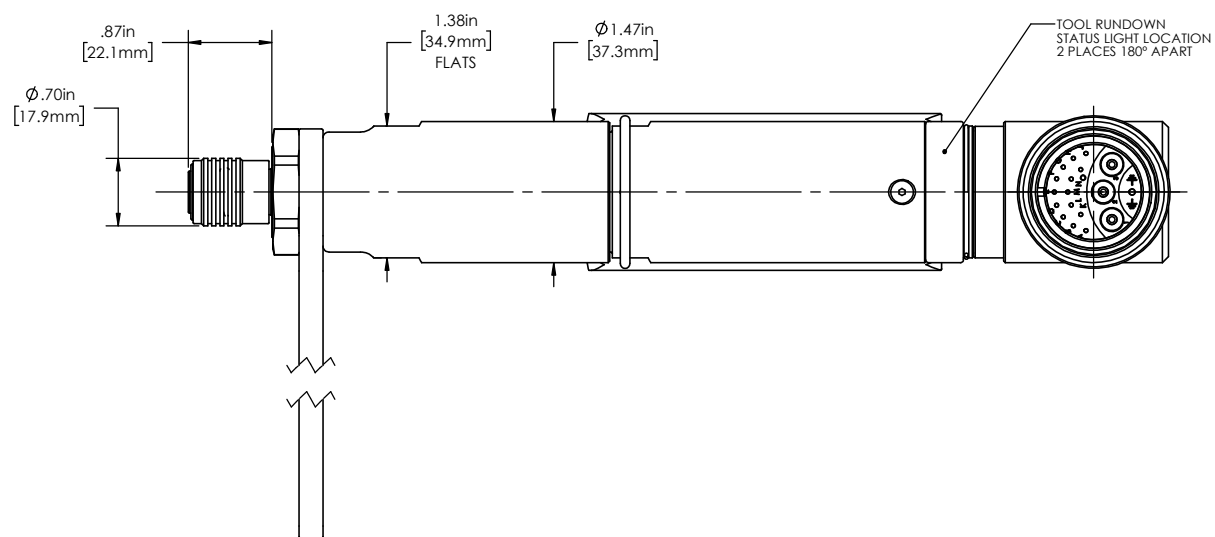
REMOVE BURRS AND SHARP EDGES: R.015 MAX MACHINE SURFACE FINISH: 125 RMS OR BETTER

DRAWINGS AND TECHNICAL DOCUMENTS CONTROLLED BY:
ACRADYNE MECHANICAL ENGINEERING

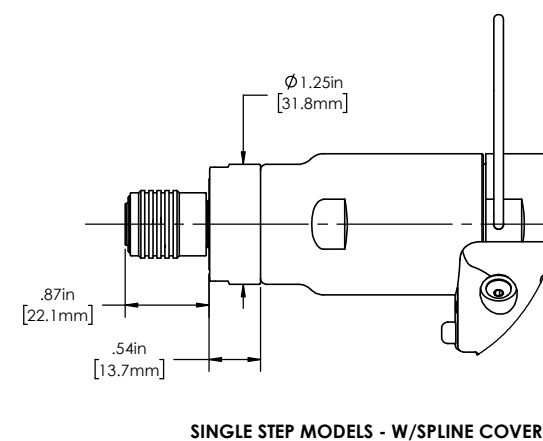
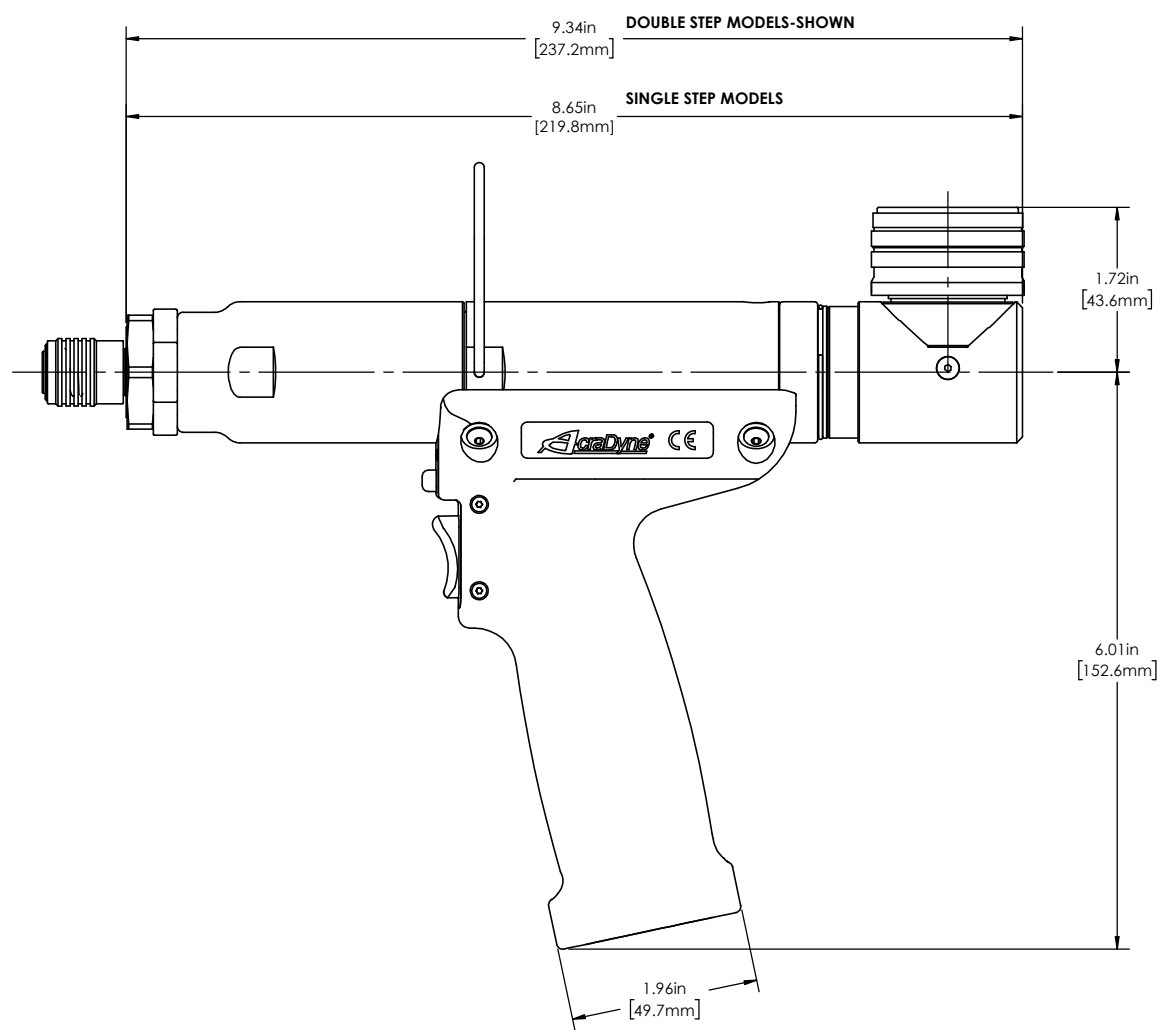
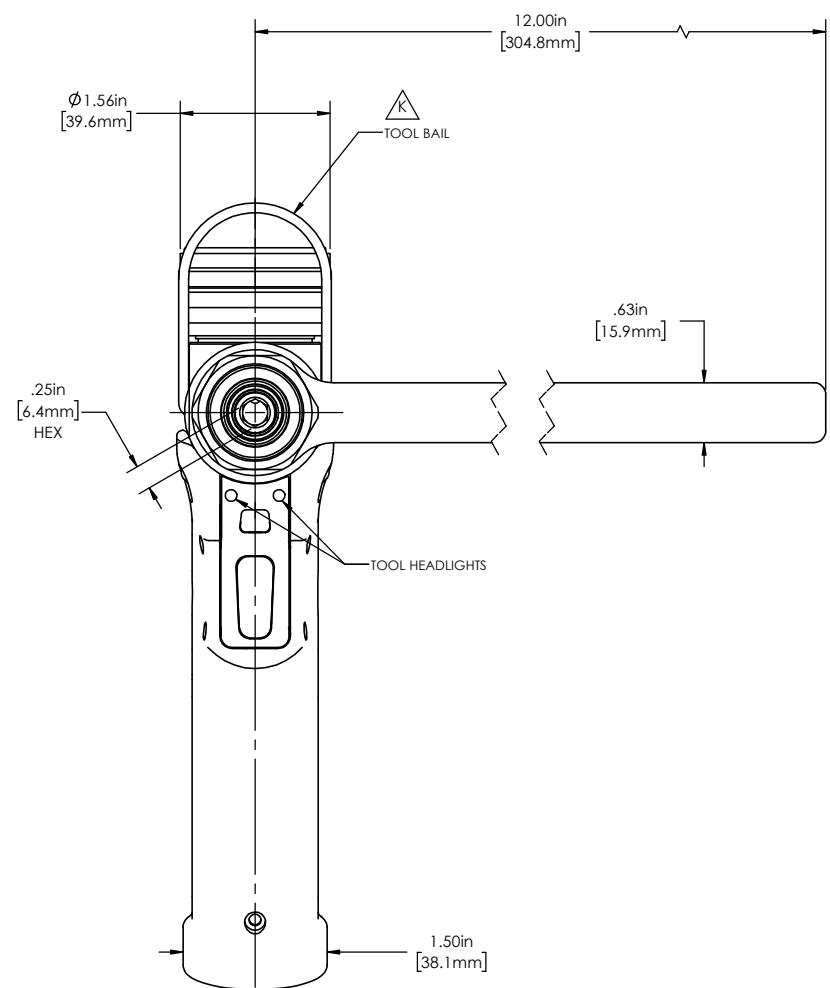
PISTOL NUTRUNNER TOP EXIT, Q.C. GEN IV, 1000-SERIES

SIZE	PART / DRAWING NUMBER	REVISION
D	AEP4T120_BQ	K

SCALE: 1:2 DO NOT SCALE DRAWING SHEET 1 OF 2



	MODEL NO.
1/4" HEX Q.C. MODELS SINGLE STEP	AEP4T12003BQ AEP4T12006BQ
1/4" HEX Q.C. MODELS DOUBLE STEP	AEP4T12011BQ AEP4T12014BQ



DOCUMENT CONTROL
PRINTED COPIES OF THIS DOCUMENT ARE CONSIDERED TO BE UNCONTROLLED DOCUMENTS. HOLDERS ARE RESPONSIBLE FOR VERIFYING THE CURRENT REVISION LEVEL WITH PURCHASING OR ENGINEERING PRIOR TO USE OR FABRICATION. THE CONTROLLED VERSION OF THIS DOCUMENT IS ELECTRONICALLY MAINTAINED.

PROPRIETARY AND CONFIDENTIAL
THIS DRAWING CONTAINS INFORMATION STRICTLY CONFIDENTIAL TO ACRADYNE/AIMCO. IN THE ABSENCE OF EXPRESSED WRITTEN PERMISSION, ACRADYNE/AIMCO HAS LOANED THIS COPY WITH THE MUTUAL UNDERSTANDING THAT (A) IT WILL NOT BE USED FOR ANY PURPOSE OTHER THAN FOR THAT IN WHICH IT WAS PROVIDED, (B) THE DATA CONTAINED HEREIN WILL NOT BE DISCLOSED TO OTHERS, (C) IT WILL NOT BE REPRODUCED, AND (D) IT WILL BE RETURNED TO ACRADYNE/AIMCO IMMEDIATELY UPON DEMAND.

REVISION LEVEL	REVISION RELEASE DATE	DESCRIPTION OF CHANGES MADE TO PART	ECN #	AUTHOR/ APPROVAL

UNLESS OTHERWISE SPECIFIED, DIMENSIONS ARE IN INCHES
DIMENSIONS AND TOLERANCING PER ANSI Y14.5
SURFACE ROUGHNESS PER ANSI Y14.36

BLOCK TOLERANCING PER DECIMAL:
X = ±.030 XX = ±.010 XXX = ±.005 .XXXX = ±.0005
ANGLE = ±0° 30'

REMOVE BURRS AND SHARP EDGES: R.015 MAX
MACHINE SURFACE FINISH: 125 RMS OR BETTER

DRAWINGS AND TECHNICAL DOCUMENTS CONTROLLED BY:
ACRADYNE MECHANICAL ENGINEERING

**PISTOL NUTRUNNER
TOP EXIT, Q.C.
GEN IV, 1000-SERIES**

SIZE	PART / DRAWING NUMBER	REVISION
D	AEP4T120_BQ	K

SCALE: 1:2 DO NOT SCALE DRAWING SHEET 2 OF 2