

COMMENTS	ITEM NO.	PART NUMBER	QTY.	DESCRIPTION
	1	26160	1	ASSY, MOTOR, 4650
	2	24840	1	FOIL SEAL 2" DIA
	3	29335	4	STANDOFF, M-F, 4-40 X 3/16, SS
	4	27797	1	TID BOARD, POPULATED W/O AMP CIRCUIT
	5	29337	3	STANDOFF, M-F, 4-40 X 1/8, SS
	6	29338	1	TID WIRE INSULATOR
	7	25573	7	SCREW PHP 4-40 X 3/16 18-8 SS
	8	25490	2	LENS, LED, INJECTION MOLDED
	9	25230	1	END CAP
	10	SEE CHART	1	GEAR BOX ASM.
	11	27978	1	SLIP RING INNER PLATE
	12	28278	1	SLIP RING OUTER PLATE SUB-ASM.
	13	27714	2	O-RING 3" ID
SEE WORK INSTRUCTIONS	14	27983	1	SLIP RING SET
	15	27994	6	DOWEL PIN, Ø.0938 X .1875 LG., STEEL
	16	27993	6	SCREW, FHPM, 2-56, 18-8SS, PLAIN
	17	27953	1	O-RING, 70 DURO BUNA N, -.042
	18	28174	8	SPRING, COMPRESSION
	19	20105	8	DETENT BALL
	20	25745	2	SCREW, BHSC 4-40 STEEL, BLACK OXIDE
	21	28000	1	CABLE TIE-MOUNT
	22	28257	4	CABLE TIE, 1.65MM W X 71MM LG
	23	24940	1	SCREW, FHSC 4-40 X .25 LG., STEEL, BLACK OXIDE
	24	25568	4	SHC 10-32 x 1.25 BLK OXIDE
	25	25969	2	BEARING, BALL, Ø42mm X Ø30mm X 7mm
	26	25961	1	BEARING RETAINER, INNER
	27	25962	1	BEARING RETAINER, OUTER
	28	27980	1	SLIP RING PINION ADAPTER
	29	26080	1	O-RING, LED LIGHT RING COVER
	30	25233	1	TRAY, WIRE, HT TOOLS PISTOL
	31	27999	1	SLIP RING TRANSDUCER CABLE CHASE
	32	25234	1	HANDLE, HT TOOLS PISTOL
	33	25212	1	SWITCH SUB-ASSEMBLY
NOT SHOWN	34	25582	1	TRIGGER CABLE
	35	25505	1	TOOL CONNECTOR ASM HERC PISTOL
	36	25569	6	SCREW LHCS 10-32 X 3/8 18-8 SS
	37	25570	2	SCREW SHCS 4-40 X 1/4 18-8 SS
	38	25564	3	WASHER SHIM .093THK .25ID .375OD
	39	29284	3	SCREW, BHSC, 10-32 X 1/2, TORX HEAD, NYLON PELL-IT, STEEL
	40	29279	9	SCREW, BHSC, 10-32 X 3/8, TORX HEAD, NYLON PELL-IT, STEEL
	41	28203	1	HT TOOL TRANSDUCER SLEEVE
	42	25218	3	SCREW, BHSC, 6-32 X 5/16, SS
	43	26898	1	CHOOSE REACTION BAR
	44	25579	1	PLUG 3/8"
	45	31412	1	GROUND WIRE ASSEMBLY, 18 AWG, 8000 & 9000 HT SERIES
NOT SHOWN	46	24177	A/R	RTV 108, TRANSLUCENT

NOTE:
SEE WORK INSTRUCTION DOCUMENT "W2047"
FOR COMPLETE ASSEMBLY INSTRUCTIONS.

MODEL NO.	GEARBOX ASM.	SLIP RING SET
AEP4B884200B	28112	27983.002
AEP4B884200B1	28113	
AEP4W884650B	28112	27983.003
AEP4W884650B1	28113	
AEP4B885000B	28112	27983.004
AEP4B885000B1	28113	
AEP4W885000B	31196	27983.009
AEP4W885000B1	31190	

- ◆ ASSEMBLY INSTRUCTIONS
 ◊ SUB-ASSEMBLY
- GEARS & SPLINES: LUBRICATE WITH DOW CORNING MOLYKOTE BR2 PLUS GREASE.
 - BEARINGS: LUBRICATE WITH CHEVRON SRI GREASE
 - O-RINGS: LUBRICATE WITH O-RING LUBE



DOCUMENT CONTROL
 PRINTED COPIES OF THIS DOCUMENT ARE CONSIDERED TO BE UNCONTROLLED DOCUMENTS. HOLDERS ARE RESPONSIBLE FOR VERIFYING THE CURRENT REVISION LEVEL WITH PURCHASING OR ENGINEERING PRIOR TO USE OR FABRICATION. THE CONTROLLED VERSION OF THIS DOCUMENT IS ELECTRONICALLY MAINTAINED.

PROPRIETARY AND CONFIDENTIAL
 THIS DRAWING CONTAINS INFORMATION STRICTLY CONFIDENTIAL TO ACRADYNE/AIMCO. IN THE ABSENCE OF EXPRESSED WRITTEN PERMISSION, ACRADYNE/AIMCO HAS LOANED THIS COPY WITH THE MUTUAL UNDERSTANDING THAT (A) IT WILL NOT BE USED FOR ANY PURPOSE OTHER THAN FOR THAT IN WHICH IT WAS PROVIDED, (B) THE DATA CONTAINED HEREIN WILL NOT BE DISCLOSED TO OTHERS, (C) IT WILL NOT BE REPRODUCED, AND (D) IT WILL BE RETURNED TO ACRADYNE/AIMCO IMMEDIATELY UPON DEMAND.

REVISION LEVEL	REVISION RELEASE DATE	DESCRIPTION OF CHANGES MADE TO PART	ECN #	AUTHOR / APPROVAL
REVISION BLOCK				

UNLESS OTHERWISE SPECIFIED, DIMENSIONS ARE IN INCHES
 DIMENSIONS AND TOLERANCING PER ANSI Y14.5 SURFACE ROUGHNESS PER ANSI Y14.36

BLOCK TOLERANCING PER DECIMAL:
 .X = ±.030 .XX = ±.010 .XXX = ±.005 .XXXX = ±.0005
 ANGLE = 40° 30'

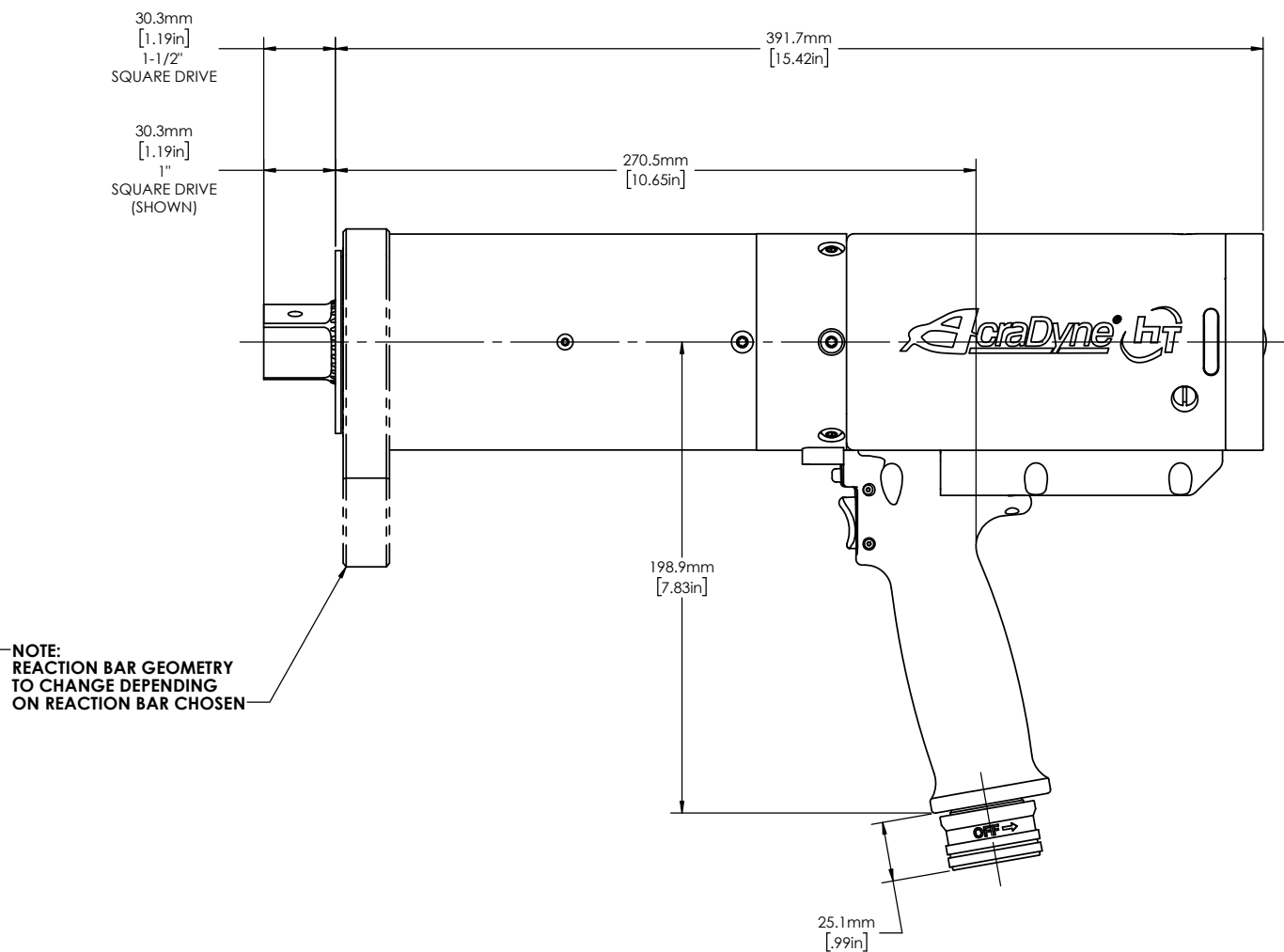
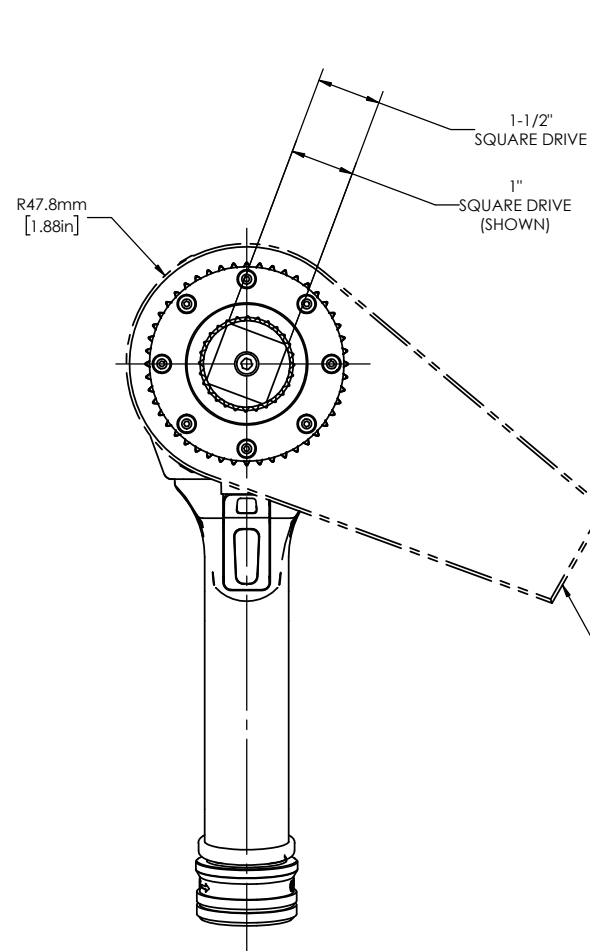
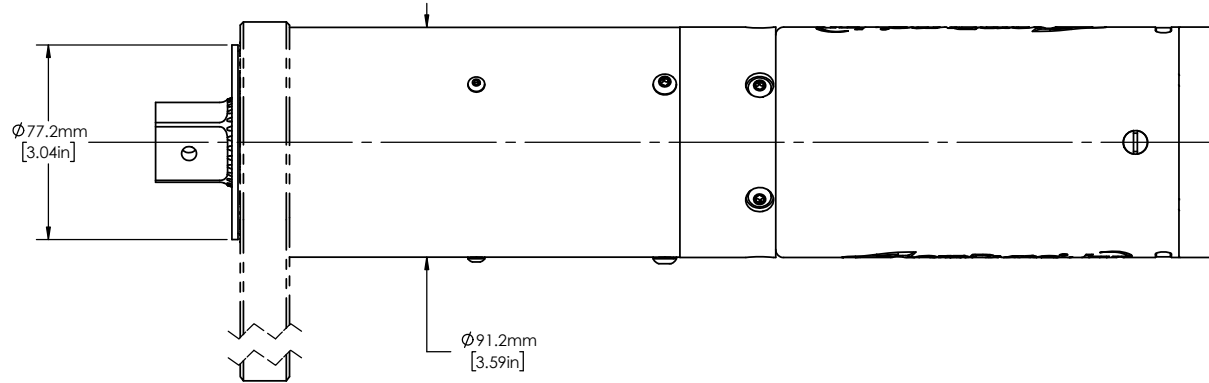
REMOVE BURRS AND SHARP EDGES: R.015 MAX MACHINE SURFACE FINISH: 125 RMS OR BETTER

DRAWINGS AND TECHNICAL DOCUMENTS CONTROLLED BY:
ACRADYNE MECHANICAL ENGINEERING

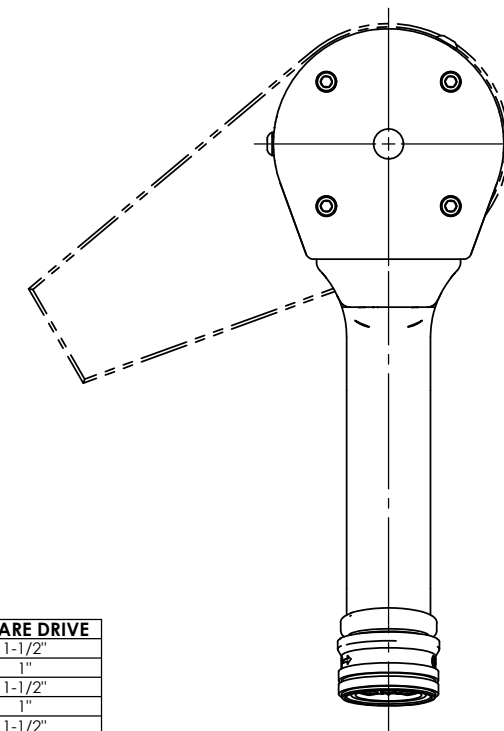
PISTOL NUTRUNNER W/SLIP RING CLUTCH 8000 SERIES

SIZE	PART / DRAWING NUMBER	REVISION
D	AEP4 88 B	D

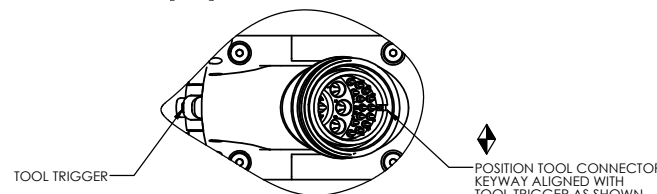
SCALE 1:8 DO NOT SCALE DRAWING SHEET 1 OF 2



NOTE:
REACTION BAR GEOMETRY
TO CHANGE DEPENDING
ON REACTION BAR CHOSEN



MODEL NO.	SQUARE DRIVE
AEP4B884200B	1-1/2"
AEP4B884200B1	1"
AEP4W884650B	1-1/2"
AEP4W884650B1	1"
AEP4B885000B	1-1/2"
AEP4B885000B1	1"
AEP4W885000B	1-1/2"
AEP4W885000B1	1"



DOCUMENT CONTROL
PRINTED COPIES OF THIS DOCUMENT ARE CONSIDERED TO BE UNCONTROLLED DOCUMENTS. HOLDERS ARE RESPONSIBLE FOR VERIFYING THE CURRENT REVISION LEVEL WITH PURCHASING OR ENGINEERING PRIOR TO USE OR FABRICATION. THE CONTROLLED VERSION OF THIS DOCUMENT IS ELECTRONICALLY MAINTAINED.

PROPRIETARY AND CONFIDENTIAL
THIS DRAWING CONTAINS INFORMATION STRICTLY CONFIDENTIAL TO ACRADYNE/AIMCO. IN THE ABSENCE OF EXPRESSED WRITTEN PERMISSION, ACRADYNE/AIMCO HAS LOANED THIS COPY WITH THE MUTUAL UNDERSTANDING THAT (A) IT WILL NOT BE USED FOR ANY PURPOSE OTHER THAN FOR THAT IN WHICH IT WAS PROVIDED, (B) THE DATA CONTAINED HEREIN WILL NOT BE DISCLOSED TO OTHERS, (C) IT WILL NOT BE REPRODUCED, AND (D) IT WILL BE RETURNED TO ACRADYNE/AIMCO IMMEDIATELY UPON DEMAND.

REVISION LEVEL	REVISION RELEASE DATE	DESCRIPTION OF CHANGES MADE TO PART	ECN #	AUTHOR/ APPROVAL

UNLESS OTHERWISE SPECIFIED, DIMENSIONS ARE IN INCHES
DIMENSIONS AND TOLERANCING PER ANSI Y14.5
SURFACE ROUGHNESS PER ANSI Y14.36

BLOCK TOLERANCING PER DECIMAL:
X = ±.030 XX = ±.010 XXX = ±.005 XXXX = ±.0005
ANGLE = ±0°30'

REMOVE BURRS AND SHARP EDGES: R.015 MAX
MACHINE SURFACE FINISH: 125 RMS OR BETTER

DRAWINGS AND TECHNICAL DOCUMENTS CONTROLLED BY:
ACRADYNE MECHANICAL ENGINEERING

**PISTOL NUTRUNNER
W/SLIP RING CLUTCH
8000 SERIES**

SIZE	PART / DRAWING NUMBER	REVISION
D	AEP4 88 B	D
SCALE 1:8	DO NOT SCALE DRAWING	SHEET 2 OF 2