

COMMENTS	ITEM NO.	PART NUMBER	QTY.	DESCRIPTION
	1	26160	1	MOTOR ASM.
	2	24840	1	FOIL SEAL 2" DIA
	3	29335	4	STANDOFF, M-F, 4-40 X 3/16, SS
	4	27797	1	TID BOARD, POPULATED W/O AMP CIRCUIT
	5	25490	2	LENS, LED
	6	29337	3	STANDOFF, M-F, 4-40 X 1/8, SS
	7	25574	1	STANDOFF M-F, 4-40x1/4, 3/16 HEX, SS
	8	29338	1	TID WIRE INSULATOR
	9	25573	4	SCREW PHP 4-40 X 3/16 18-8 SS
	10	25230	1	END CAP
	11	25568	4	SHC 10-32 x 1.25 BLK OXIDE
	12	SEE CHART	1	GEAR BOX ASM.
	13	27978	1	SLIP RING INNER PLATE
	14	28278	1	SLIP RING OUTER PLATE SUB-ASM.
	15	27714	2	O-RING 3" ID
SEE WORK INSTRUCTIONS	16	SEE CHART	1	SLIP RING SET
	17	27994	6	DOWEL PIN, Ø.0938 X .1875 LG., STEEL
	18	27993	6	SCREW, FHSM, 2-56, 18-8SS, PLAIN
	19	27953	1	O-RING, 70 DURO BUNA N, .042
	20	28174	8	SPRING, COMPRESSION
	21	20105	8	DETENT BALL
	22	25745	2	SCREW, BHSC 4-40 STEEL, BLACK OXIDE
	23	28000	1	CABLE TIE-MOUNT
	24	28257	4	CABLE TIE, 1.65MM W X 71MM LG
	25	24940	1	SCREW, FHSC 4-40 X .25 LG., STEEL, BLACK OXIDE
	26	25969	2	BEARING, BALL, Ø42mm X Ø30mm X 7mm
	27	25961	1	BEARING RETAINER, INNER
	28	25962	1	BEARING RETAINER, OUTER
	29	27980	1	SLIP RING PINION ADAPTER
	30	26080	1	O-RING, LED LIGHT RING COVER
	31	25233	1	TRAY, WIRE, HT TOOLS PISTOL
	32	29279	10	SCREW, BHSC, TORX, 10-32 x 3/8, STEEL
	33	29284	2	SCREW, BHSC, TORX, 10-32 X 1/2, STEEL
	34	27999	1	SLIP RING TRANSDUCER CABLE CHASE
	35	25234	1	HANDLE, HT TOOLS PISTOL
	36	25212	1	SWITCH SUB-ASSEMBLY
NOT SHOWN	37	25582	1	TRIGGER CABLE
	38	25505	1	TOOL CONNECTOR ASM HERC PISTOL
	39	25569	6	SCREW LHCS 10-32 X 3/8 18-8 SS
	40	25570	2	SCREW SHCS 4-40 X 1/4 18-8 SS
	41	25564	2	WASHER SHIM .093THK .25ID .375OD
	42	28204	1	RING GEAR COVER, 8100Nm
	43	26636	1	GEAR CASE COVER
	44	26319	3	SCREW, BHSC 6-32 X .188, 18-8 SS
	45	26899	1	CHOOSE REACTION BAR
	46	26436	1	RETAINING RING, SPIRAL, Ø3.833 X Ø3.293 X .111
	47	25579	1	PLUG 3/8"

NOTE: SEE WORK INSTRUCTION DOCUMENT "EWI-011" FOR COMPLETE ASSEMBLY INSTRUCTIONS.

MODEL NO.	GEARBOX ASM.	SLIP RING SET
AEP4B896500B	28114	27983.005
AEP4W896500B	28115	27983.005
AEP4B898100B	28115	27983.006

- ASSEMBLY INSTRUCTIONS
- SUB-ASSEMBLY

- GEARS & SPLINES: LUBRICATE WITH DOW CORNING MOLYKOTE BR2 PLUS GREASE.
- BEARINGS: LUBRICATE WITH CHEVRON SR1 GREASE
- O-RINGS: LUBRICATE WITH O-RING LUBE



**DOCUMENT CONTROL**  
 PRINTED COPIES OF THIS DOCUMENT ARE CONSIDERED TO BE UNCONTROLLED DOCUMENTS. HOLDERS ARE RESPONSIBLE FOR VERIFYING THE CURRENT REVISION LEVEL WITH PURCHASING OR ENGINEERING PRIOR TO USE OR FABRICATION. THE CONTROLLED VERSION OF THIS DOCUMENT IS ELECTRONICALLY MAINTAINED.

**PROPRIETARY AND CONFIDENTIAL**  
 THIS DRAWING CONTAINS INFORMATION STRICTLY CONFIDENTIAL TO ACRADYNE/AIMCO. IN THE ABSENCE OF EXPRESSED WRITTEN PERMISSION, ACRADYNE/AIMCO HAS LOANED THIS COPY WITH THE MUTUAL UNDERSTANDING THAT (A) IT WILL NOT BE USED FOR ANY PURPOSE OTHER THAN FOR THAT IN WHICH IT WAS PROVIDED, (B) THE DATA CONTAINED HEREIN WILL NOT BE DISCLOSED TO OTHERS, (C) IT WILL NOT BE REPRODUCED, AND (D) IT WILL BE RETURNED TO ACRADYNE/AIMCO IMMEDIATELY UPON DEMAND.

REVISION BLOCK

UNLESS OTHERWISE SPECIFIED, DIMENSIONS ARE IN INCHES  
 DIMENSIONS AND TOLERANCING PER ANSI Y14.5  
 SURFACE ROUGHNESS PER ANSI Y14.36

**BLOCK TOLERANCING PER DECIMAL:**  
 .X = ±.030 .XX = ±.010 .XXX = ±.005 .XXXX = ±.0005  
 ANGLE = 30°

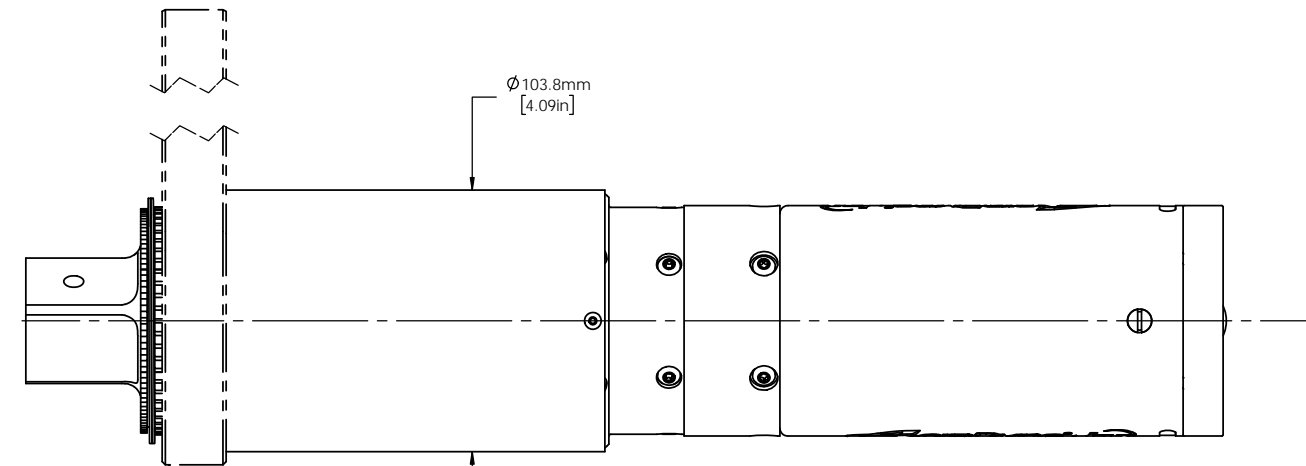
REMOVE BURRS AND SHARP EDGES: R.015 MAX  
 MACHINE SURFACE FINISH: 125 RMS OR BETTER

DRAWINGS AND TECHNICAL DOCUMENTS CONTROLLED BY:  
**ACRADYNE MECHANICAL ENGINEERING**

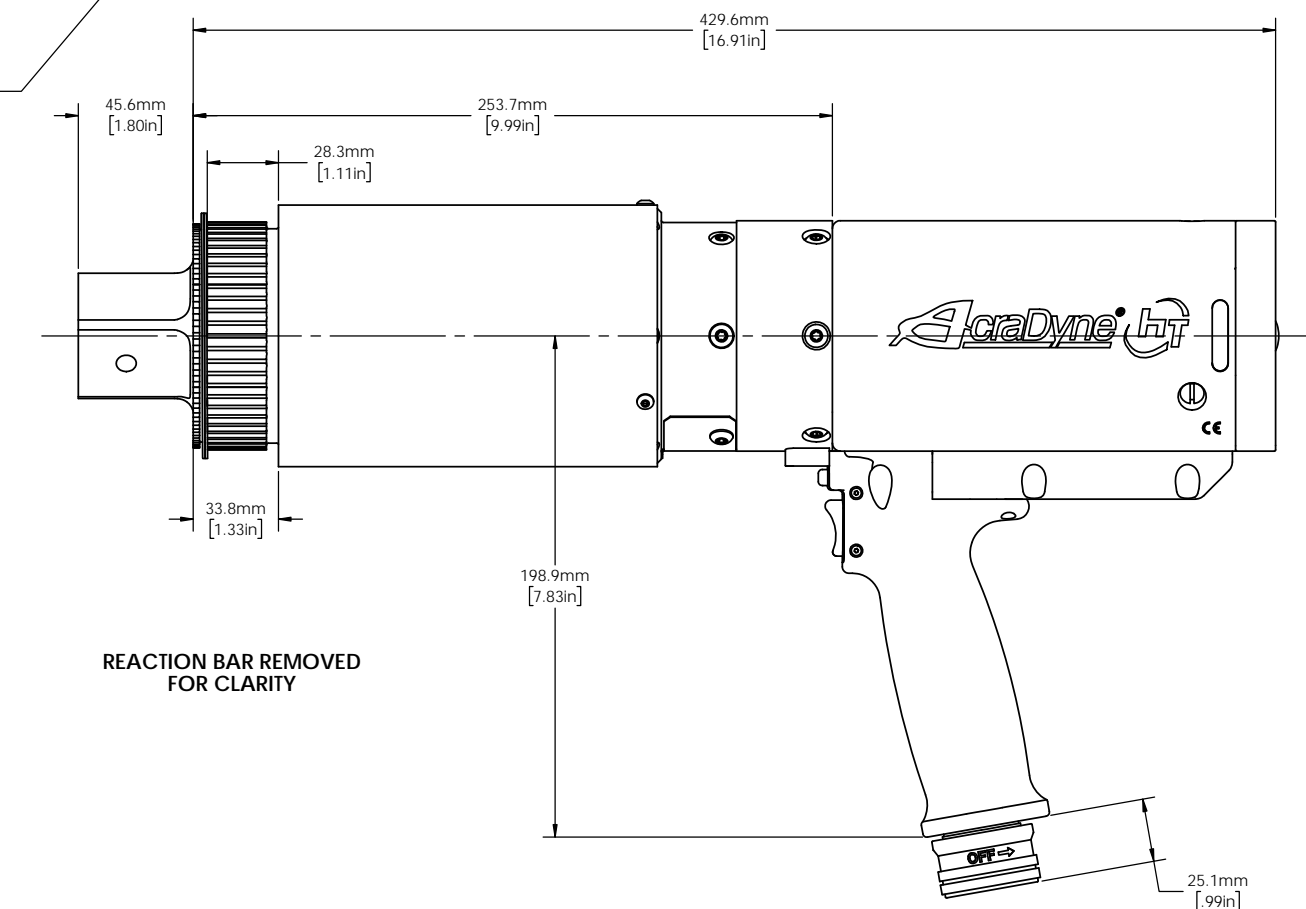
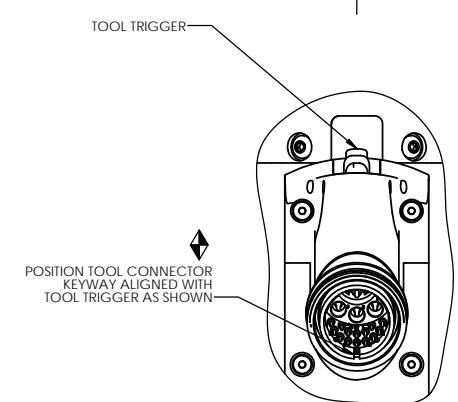
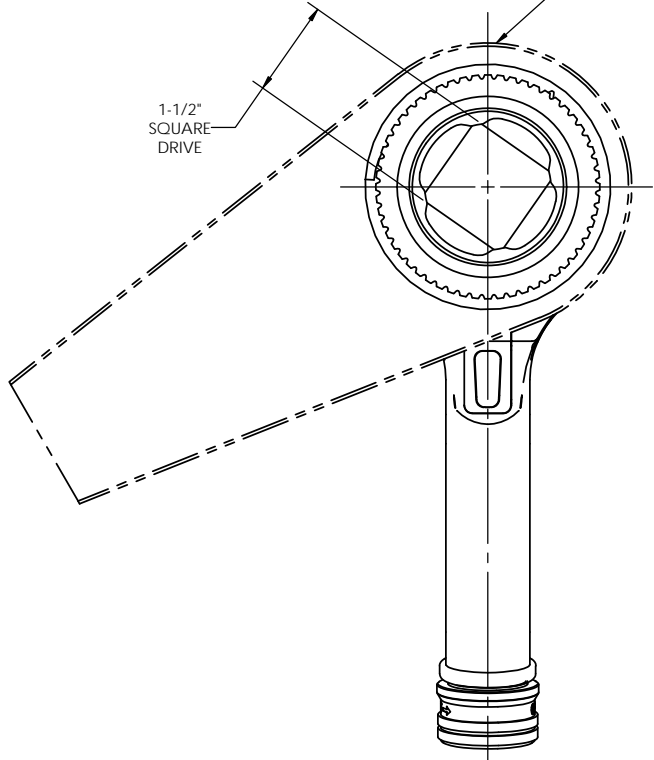
**PISTOL NUTRUNNER  
 W/SLIP RING CLUTCH  
 8000 SERIES**

SIZE	PART / DRAWING NUMBER	REVISION
D	AEP4_89__ _B	D

SCALE 2:3 DO NOT SCALE DRAWING SHEET 1 OF 2



**NOTE:**  
REACTION BAR GEOMETRY  
TO CHANGE DEPENDING  
ON REACTION BAR CHOSEN.



REACTION BAR REMOVED  
FOR CLARITY

<b>MODEL NO.</b>
AEP4B896500B
AEP4W896500B
AEP4B898100B



**DOCUMENT CONTROL**  
PRINTED COPIES OF THIS DOCUMENT ARE CONSIDERED TO BE UNCONTROLLED DOCUMENTS. HOLDERS ARE RESPONSIBLE FOR VERIFYING THE CURRENT REVISION LEVEL WITH PURCHASING OR ENGINEERING PRIOR TO USE OR FABRICATION. THE CONTROLLED VERSION OF THIS DOCUMENT IS ELECTRONICALLY MAINTAINED.

**PROPRIETARY AND CONFIDENTIAL**  
THIS DRAWING CONTAINS INFORMATION STRICTLY CONFIDENTIAL TO ACRADYNE/AIMCO. IN THE ABSENCE OF EXPRESSED WRITTEN PERMISSION, ACRADYNE/AIMCO HAS LOANED THIS COPY WITH THE MUTUAL UNDERSTANDING THAT (A) IT WILL NOT BE USED FOR ANY PURPOSE OTHER THAN FOR THAT IN WHICH IT WAS PROVIDED, (B) THE DATA CONTAINED HEREIN WILL NOT BE DISCLOSED TO OTHERS, (C) IT WILL NOT BE REPRODUCED, AND (D) IT WILL BE RETURNED TO ACRADYNE/AIMCO IMMEDIATELY UPON DEMAND.

REVISION BLOCK

**UNLESS OTHERWISE SPECIFIED, DIMENSIONS ARE IN INCHES**  
DIMENSIONS AND TOLERANCING PER ANSI Y14.5  
SURFACE ROUGHNESS PER ANSI Y14.36

**BLOCK TOLERANCING PER DECIMAL:**  
.X = ±.030 .XX = ±.010 .XXX = ±.005 .XXXX = ±.0005  
ANGLE = ±0° 30'

REMOVE BURRS AND SHARP EDGES: R.015 MAX  
MACHINE SURFACE FINISH: 125 RMS OR BETTER

DRAWINGS AND TECHNICAL DOCUMENTS CONTROLLED BY:  
**ACRADYNE MECHANICAL ENGINEERING**

<b>PISTOL NUTRUNNER W/SLIP RING CLUTCH 8000 SERIES</b>		
SIZE <b>D</b>	PART / DRAWING NUMBER <b>AEP4_89_ _ _ B</b>	REVISION <b>D</b>
SCALE 1:8	DO NOT SCALE DRAWING	SHEET 2 OF 2