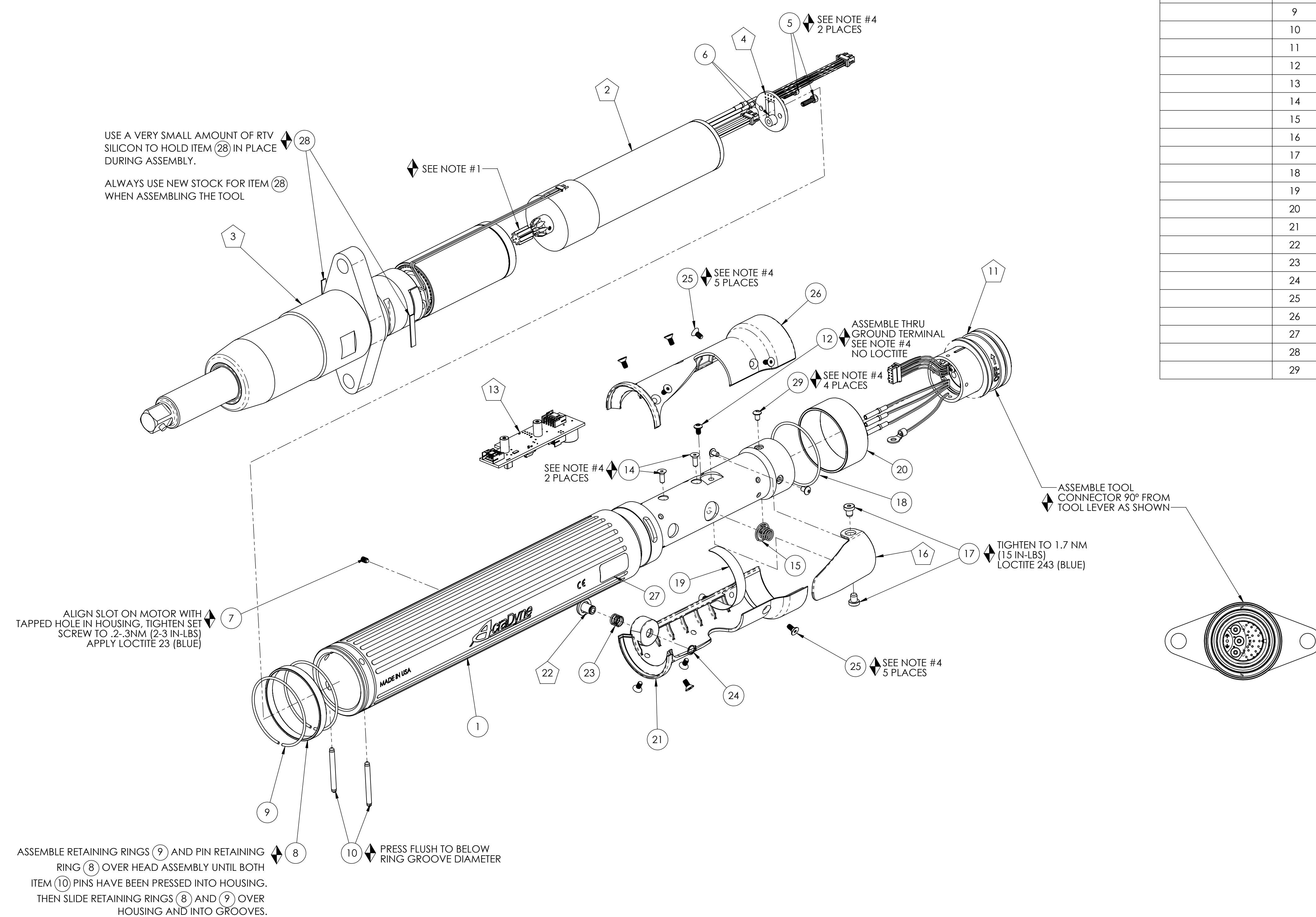


MODEL NO.	OUTPUT ASM.
AES33040C-2	26601
AES33060C-2	26600

COMMENTS	ITEM NO.	PART NUMBER	QTY.	DESCRIPTION
	1	27031	1	MOTOR HOUSING ASSEMBLY
	2	25525	1	MOTOR ASSY, 9T, 3000 SERIES
	3	26600	1	OUTPUT ASSEMBLY, 60 Nm
	4	25063	1	LED BOARD ASM.
	5	25075	2	SCREW, SHC 4-40X.375, STEEL, BLACK OXIDE
	6	25430	2	STAND-OFF, LED, 3000 SERIES
	7	27027	1	SCREW, SET 5-40X.188,STEEL,BLK OXIDE
	8	25106	1	PIN RETAINER RING
	9	25107	2	RETAINING RING, PIN RETAINER
	10	26793	2	RETAINING PIN, .125 OD X 1-1/4
	11	26102	1	TOOL CONNECTOR ASM., LEVER
	12	25102	1	SCREW, BHC 4-40X.188, STEEL, BLACK OXIDE
	13	25847	1	TID BOARD ASM.
	14	24934	2	SCREW, FHC 4-40 X .312, STEEL, BLACK OXIDE
	15	20132	1	THROTTLE SPRING
	16	26532	1	GEN 3 TRIGGER ASSY, CAST
	17	20061	2	SCREW, LEVER
	18	25072	1	O-RING, LED LIGHT RING COVER
	19	20534	1	3000 SERIAL/MODEL LABEL
	20	25058	1	LIGHT RING COVER, LED
	21	26084	1	HANDLE COVER, MFB
	22	24706	1	REV BUTTON SUB-ASSEMBLY
	23	24683	1	SPRING, REV BUTTON
	24	24679	1	RETAINING RING
	25	24940	10	SCREW, FHSC 4-40 X .25 LG., STEEL, BLACK OXIDE
	26	26083	1	HANDLE COVER
	27	22141	1	SAFETY LABEL
	28	26184	2	ADAPTER INSERT, GEN 3B 3000 SERIES
	29	25745	4	SCREW, BHSC 4-40 STEEL, BLACK OXIDE



USE A VERY SMALL AMOUNT OF RTV SILICON TO HOLD ITEM (28) IN PLACE DURING ASSEMBLY.  
ALWAYS USE NEW STOCK FOR ITEM (28) WHEN ASSEMBLING THE TOOL

ALIGN SLOT ON MOTOR WITH TAPPED HOLE IN HOUSING. TIGHTEN SET SCREW TO 2-3NM (2-3 IN-LBS) APPLY LOCTITE 23 (BLUE)

ASSEMBLE RETAINING RINGS (9) AND PIN RETAINING RING (8) OVER HEAD ASSEMBLY UNTIL BOTH ITEM (10) PINS HAVE BEEN PRESSED INTO HOUSING. THEN SLIDE RETAINING RINGS (8) AND (9) OVER HOUSING AND INTO GROOVES.

ASSEMBLE TOOL CONNECTOR 90° FROM TOOL LEVER AS SHOWN

TIGHTEN TO 1.7 NM (1.5 IN-LBS) LOCTITE 243 (BLUE)

- ◆ ASSEMBLY INSTRUCTIONS  
◡ SUB-ASSEMBLY
- GEARS & SPLINES: LUBRICATE WITH DOW CORNING MOLYKOTE BR2 PLUS GREASE.
  - BEARINGS: LUBRICATE WITH CHEVRON SR1 GREASE
  - O-RINGS: LUBRICATE WITH O-RING LUBE
  - TIGHTEN TO 1.0 NM (9 IN-LBS.) USE LOCTITE 243 (BLUE)

REQUIRED TOOLING
LOCTITE 243 (BLUE)
1/16 HEX WRENCH
5/64 HEX WRENCH
3/32 HEX WRENCH
SNAP RING PLIERS - EXTERNAL TYPE



**DOCUMENT CONTROL**  
PRINTED COPIES OF THIS DOCUMENT ARE CONSIDERED TO BE UNCONTROLLED DOCUMENTS. HOLDERS ARE RESPONSIBLE FOR VERIFYING THE CURRENT REVISION LEVEL WITH PURCHASING OR ENGINEERING PRIOR TO USE OR FABRICATION. THE CONTROLLED VERSION OF THIS DOCUMENT IS ELECTRONICALLY MAINTAINED.

**PROPRIETARY AND CONFIDENTIAL**  
THIS DRAWING CONTAINS INFORMATION STRICTLY CONFIDENTIAL TO ACRADYNE/AIMCO. IN THE ABSENCE OF EXPRESSED WRITTEN PERMISSION, ACRADYNE/AIMCO HAS LOANED THIS COPY WITH THE MUTUAL UNDERSTANDING THAT (A) IT WILL NOT BE USED FOR ANY PURPOSE OTHER THAN FOR THAT IN WHICH IT WAS PROVIDED, (B) THE DATA CONTAINED HEREIN WILL NOT BE DISCLOSED TO OTHERS, (C) IT WILL NOT BE REPRODUCED, AND (D) IT WILL BE RETURNED TO ACRADYNE/AIMCO IMMEDIATELY UPON DEMAND.

REVISION LEVEL	REVISION RELEASE DATE	DESCRIPTION OF CHANGES MADE TO PART	ECN #	AUTHOR APPROVAL
<b>REVISION BLOCK</b>				

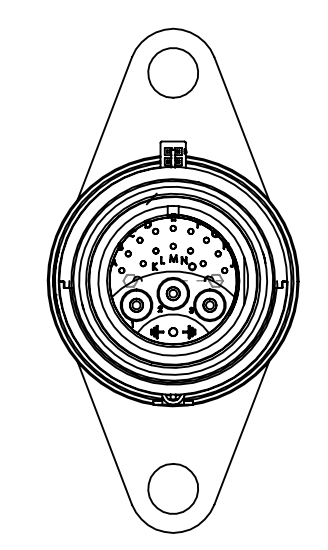
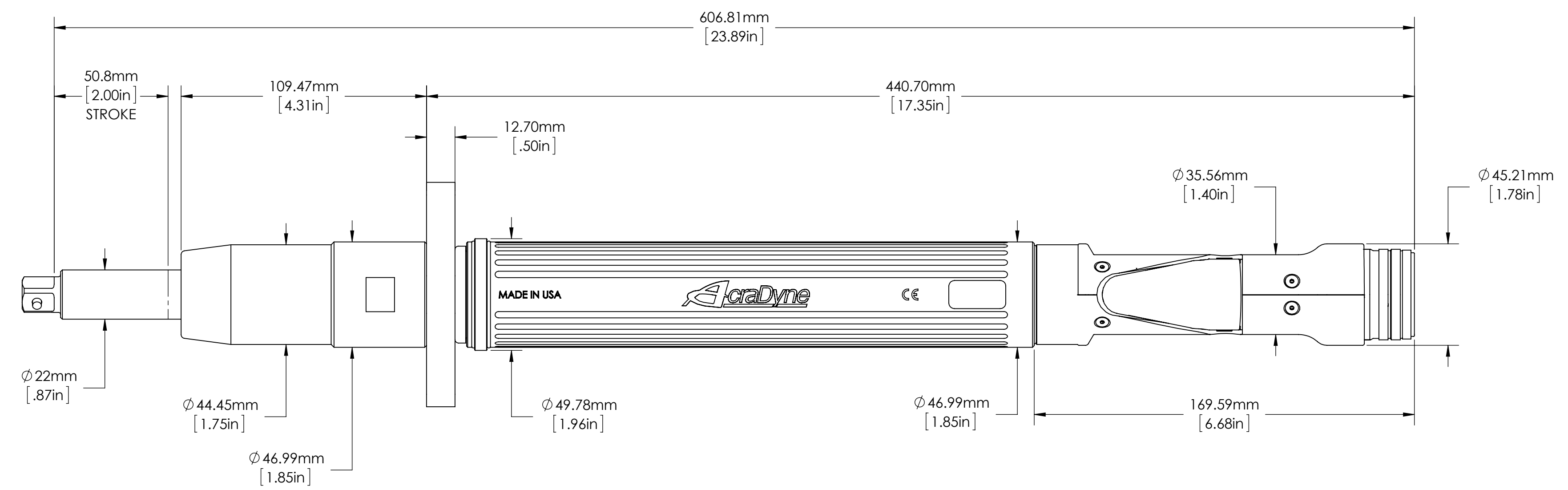
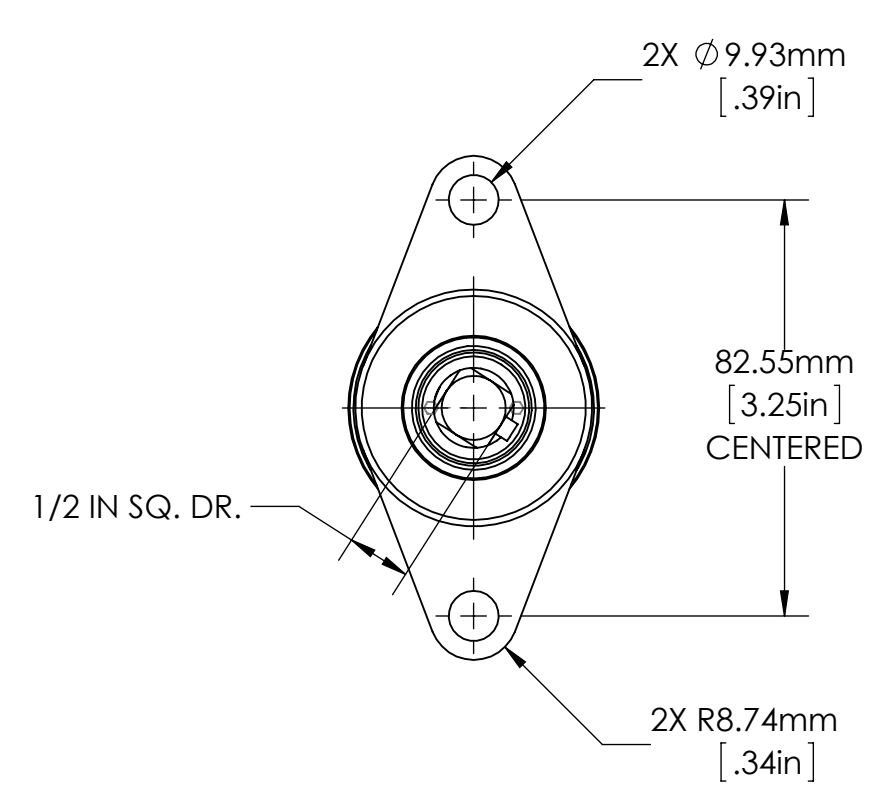
**UNLESS OTHERWISE SPECIFIED, DIMENSIONS ARE IN INCHES**  
DIMENSIONS AND TOLERANCING PER ANSI Y14.5 SURFACE ROUGHNESS PER ANSI Y14.36

**BLOCK TOLERANCING PER DECIMAL:**  
X = ±.030 XX = ±.010 XXX = ±.005 XXXX = ±.0005  
ANGLE = ±0° 30'

REMOVE BURRS AND SHARP EDGES: R.015 MAX MACHINE SURFACE FINISH: 125 RMS OR BETTER

DRAWINGS AND TECHNICAL DOCUMENTS CONTROLLED BY:  
**ACRADYNE MECHANICAL ENGINEERING**

INLINE TOOL, SLIDING SPINDLE 3000 SERIES, GEN 3C		
SIZE	PART / DRAWING NUMBER	REVISION
D	AES330_C-2	A
SCALE: 2:3	DO NOT SCALE DRAWING	SHEET 1 OF 2



**DOCUMENT CONTROL**  
 PRINTED COPIES OF THIS DOCUMENT ARE CONSIDERED TO BE UNCONTROLLED DOCUMENTS. HOLDERS ARE RESPONSIBLE FOR VERIFYING THE CURRENT REVISION LEVEL WITH PURCHASING OR ENGINEERING PRIOR TO USE OR FABRICATION. THE CONTROLLED VERSION OF THIS DOCUMENT IS ELECTRONICALLY MAINTAINED.

**PROPRIETARY AND CONFIDENTIAL**  
 THIS DRAWING CONTAINS INFORMATION STRICTLY CONFIDENTIAL TO ACRADYNE/AIMCO. IN THE ABSENCE OF EXPRESSED WRITTEN PERMISSION, ACRADYNE/AIMCO HAS LOANED THIS COPY WITH THE MUTUAL UNDERSTANDING THAT (A) IT WILL NOT BE USED FOR ANY PURPOSE OTHER THAN FOR THAT IN WHICH IT WAS PROVIDED, (B) THE DATA CONTAINED HEREIN WILL NOT BE DISCLOSED TO OTHERS, (C) IT WILL NOT BE REPRODUCED, AND (D) IT WILL BE RETURNED TO ACRADYNE/AIMCO IMMEDIATELY UPON DEMAND.

REVISION LEVEL	REVISION RELEASE DATE	DESCRIPTION OF CHANGES MADE TO PART	ECN #	AUTHOR/ APPROVAL
<b>REVISION BLOCK</b>				

**UNLESS OTHERWISE SPECIFIED, DIMENSIONS ARE IN INCHES**  
 DIMENSIONS AND TOLERANCING PER ANSI Y14.5  
 SURFACE ROUGHNESS PER ANSI Y14.36

**BLOCK TOLERANCING PER DECIMAL:**  
 .X = ±.030 .XX = ±.010 .XXX = ±.005 .XXXX = ±.0005  
 ANGLE = ±0° 30'

REMOVE BURRS AND SHARP EDGES: R.015 MAX  
 MACHINE SURFACE FINISH: 125 RMS OR BETTER

**DRAWINGS AND TECHNICAL DOCUMENTS CONTROLLED BY:**  
 ACRADYNE MECHANICAL ENGINEERING

<b>INLINE TOOL, SLIDING SPINDLE</b> 3000 SERIES, GEN 3C		
SIZE	PART / DRAWING NUMBER	REVISION
<b>D</b>	<b>AES330_C-2</b>	<b>A</b>
SCALE 2:3	DO NOT SCALE DRAWING	SHEET 2 OF 2