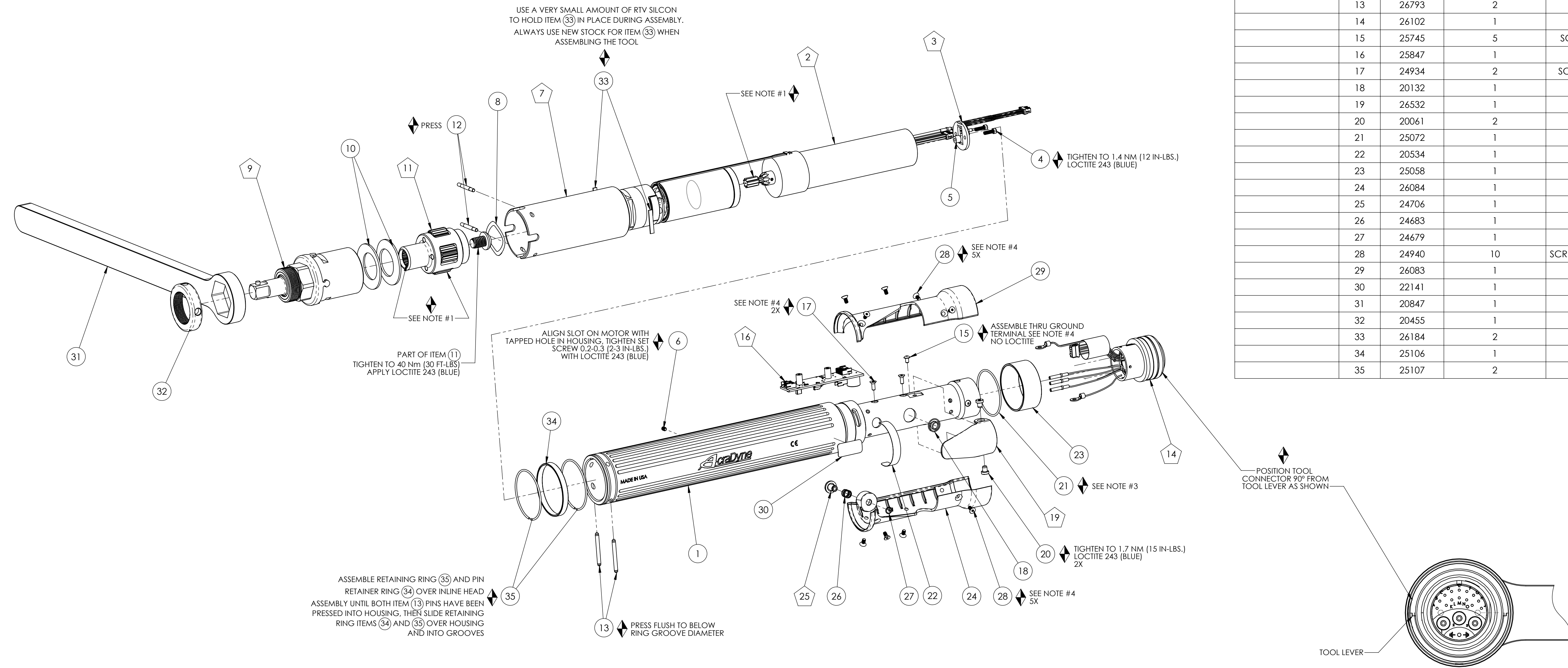


MODEL NO.	MOTOR ASSY.	GEARTRAIN ASSY.
AES33100CV	25530	25834
AES33150CV	25525	25835
AES33230CV	25525	25836

COMMENTS	ITEM NO.	PART NUMBER	Motor_exploded/QTY.	DESCRIPTION
	1	27031	1	MOTOR HOUSING ASSEMBLY
	2	SEE CHART	1	MOTOR ASSY, 9T, 3000 SERIES
	3	25063	1	LED BOARD ASM.
	4	25075	2	SCREW, SHC 4-40X.375, STEEL, BLACK OXIDE
	5	25430	2	STAND-OFF, LED, 3000 SERIES
	6	27027	1	SCREW, SET 5-40X.188,STEEL,BLK OXIDE
	7	SEE CHART	1	GEAR TRAIN ASM., (20.74:1)
	8	20912	1	WAVE SPRING --- 3000 SERIES
	9	20923	1	INLINE HEAD ASSY - 1/2 IN DRIVE
	10	20911	2	BELLEVILLE WASHER
	11	20924	1	GEAR CARRIER ASSY, THIRD STAGE, 4:1
	12	20913	2	PIN, RETAINING
	13	26793	2	RETAINING PIN, .125 OD X 1-1/4
	14	26102	1	TOOL CONNECTOR ASM., LEVER
	15	25745	5	SCREW, BHC 4-40X.188, STEEL, BLACK OXIDE
	16	25847	1	TID BOARD ASM.
	17	24934	2	SCREW, FHC 4-40 X .312, STEEL, BLACK OXIDE
	18	20132	1	THROTTLE SPRING
	19	26532	1	GEN 3 TRIGGER ASSY, CAST
	20	20061	2	SCREW, LEVER
	21	25072	1	O-RING, LED LIGHT RING COVER
	22	20534	1	3000 SERIAL/MODEL LABEL
	23	25058	1	LIGHT RING COVER, LED
	24	26084	1	HANDLE COVER, MFB
	25	24706	1	REV BUTTON SUB-ASSEMBLY
	26	24683	1	SPRING, REV BUTTON
	27	24679	1	RETAINING RNG
	28	24940	10	SCREW, FHSC 4-40 X .25 LG., STEEL, BLACK OXIDE
	29	26083	1	HANDLE COVER
	30	22141	1	SAFETY LABEL
	31	20847	1	REACTION BAR
	32	20455	1	FIXTURE NUT, INLINE --- 3000 SERIES
	33	26184	2	ADAPTER INSERT, GEN 3B 3000 SERIES
	34	25106	1	PIN RETAINER RING
	35	25107	2	RETAINING RING, PIN RETAINER



- ◆ ASSEMBLY INSTRUCTIONS  
 ◊ SUB-ASSEMBLY
- GEARS & SPLINES: LUBRICATE WITH DOW CORNING MOLYKOTE BR2 PLUS GREASE.
  - BEARINGS: LUBRICATE WITH CHEVRON SR1 GREASE
  - O-RINGS: LUBRICATE WITH O-RING LUBE
  - TIGHTEN TO 1 NM (9IN-LBS.) LOCTITE 243 (BLUE)

REQUIRED TOOLING
LOCTITE 243 (BLUE)
1/16 HEX WRENCH
5/64 HEX WRENCH
3/32 HEX WRENCH
SNAP RING PLIERS



**DOCUMENT CONTROL**  
 PRINTED COPIES OF THIS DOCUMENT ARE CONSIDERED TO BE UNCONTROLLED DOCUMENTS. HOLDERS ARE RESPONSIBLE FOR VERIFYING THE CURRENT REVISION LEVEL WITH PURCHASING OR ENGINEERING PRIOR TO USE OR FABRICATION. THE CONTROLLED VERSION OF THIS DOCUMENT IS ELECTRONICALLY MAINTAINED.

**PROPRIETARY AND CONFIDENTIAL**  
 THIS DRAWING CONTAINS INFORMATION STRICTLY CONFIDENTIAL TO ACRADYNE/AIMCO. IN THE ABSENCE OF EXPRESSED WRITTEN PERMISSION, ACRADYNE/AIMCO HAS LOANED THIS COPY WITH THE MUTUAL UNDERSTANDING THAT (A) IT WILL NOT BE USED FOR ANY PURPOSE OTHER THAN FOR THAT IN WHICH IT WAS PROVIDED, (B) THE DATA CONTAINED HEREIN WILL NOT BE DISCLOSED TO OTHERS, (C) IT WILL NOT BE REPRODUCED, AND (D) IT WILL BE RETURNED TO ACRADYNE/AIMCO IMMEDIATELY UPON DEMAND.

REVISION LEVEL	REVISION RELEASE DATE	DESCRIPTION OF CHANGES MADE TO PART	ECN #	AUTHOR/ APPROVAL
REVISION BLOCK				

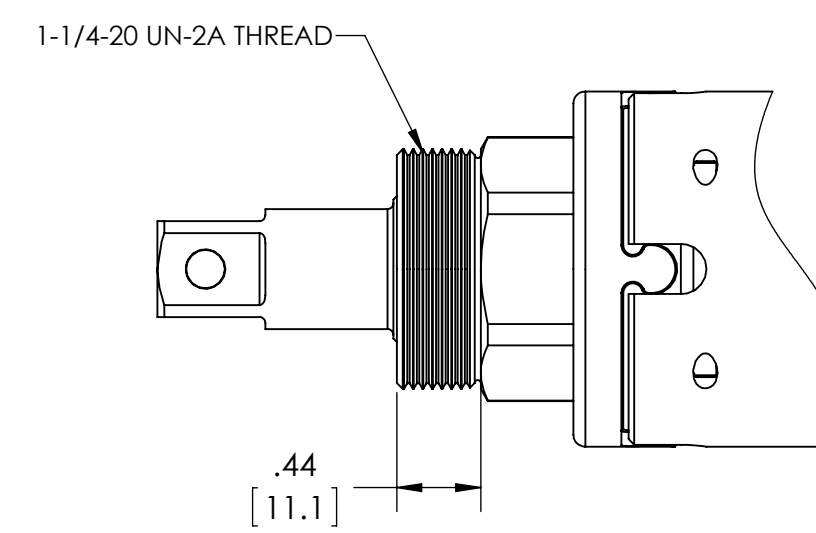
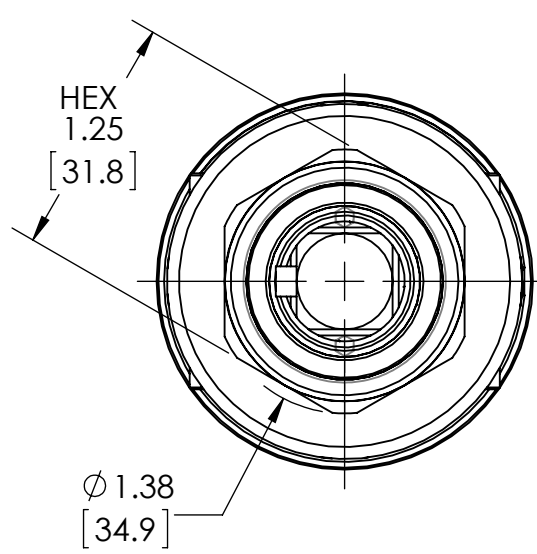
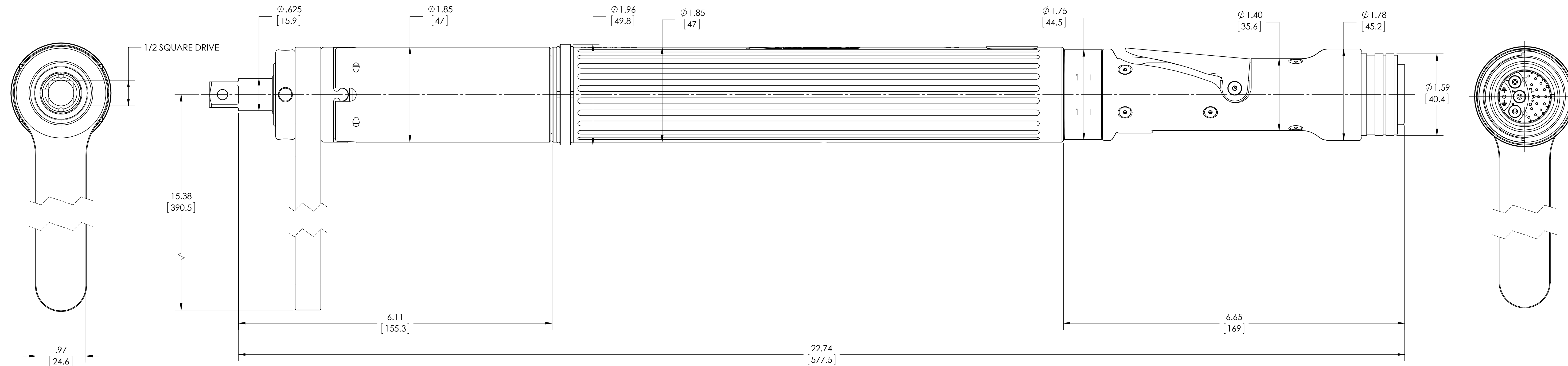
**UNLESS OTHERWISE SPECIFIED, DIMENSIONS ARE IN INCHES**  
 DIMENSIONS AND TOLERANCING PER ANSI Y14.5  
 SURFACE ROUGHNESS PER ANSI Y14.36

**BLOCK TOLERANCING PER DECIMAL:**  
 .X = ±.030 .XX = ±.010 .XXX = ±.005 .XXXX = ±.0005  
 ANGLE = ±0° 30'

REMOVE BURRS AND SHARP EDGES: R.015 MAX  
 MACHINE SURFACE FINISH: 125 RMS OR BETTER

DRAWINGS AND TECHNICAL DOCUMENTS CONTROLLED BY:  
**ACRADYNE MECHANICAL ENGINEERING**

<b>AES33__ CV INLINE NUTRUNNER</b> 3000 SERIES - GEN 3C		
SIZE <b>D</b>	PART / DRAWING NUMBER <b>AES33__ CV</b>	REVISION <b>A</b>
SCALE 1:2	DO NOT SCALE DRAWING	SHEET 1 OF 2



REACTION BAR HEX AND THREAD DETAIL VIEW



**DOCUMENT CONTROL**  
PRINTED COPIES OF THIS DOCUMENT ARE CONSIDERED TO BE UNCONTROLLED DOCUMENTS. HOLDERS ARE RESPONSIBLE FOR VERIFYING THE CURRENT REVISION LEVEL WITH PURCHASING OR ENGINEERING PRIOR TO USE OR FABRICATION. THE CONTROLLED VERSION OF THIS DOCUMENT IS ELECTRONICALLY MAINTAINED.

**PROPRIETARY AND CONFIDENTIAL**  
THIS DRAWING CONTAINS INFORMATION STRICTLY CONFIDENTIAL TO ACRADYNE/AIMCO. IN THE ABSENCE OF EXPRESSED WRITTEN PERMISSION, ACRADYNE/AIMCO HAS LOANED THIS COPY WITH THE MUTUAL UNDERSTANDING THAT (A) IT WILL NOT BE USED FOR ANY PURPOSE OTHER THAN FOR THAT IN WHICH IT WAS PROVIDED, (B) THE DATA CONTAINED HEREIN WILL NOT BE DISCLOSED TO OTHERS, (C) IT WILL NOT BE REPRODUCED, AND (D) IT WILL BE RETURNED TO ACRADYNE/AIMCO IMMEDIATELY UPON DEMAND.

REVISION LEVEL	REVISION RELEASE DATE	DESCRIPTION OF CHANGES MADE TO PART	ECN #	AUTHOR/ APPROVAL
REVISION BLOCK				

**UNLESS OTHERWISE SPECIFIED, DIMENSIONS ARE IN INCHES**  
DIMENSIONS AND TOLERANCING PER ANSI Y14.5  
SURFACE ROUGHNESS PER ANSI Y14.36

**BLOCK TOLERANCING PER DECIMAL:**  
X = ±.030 XX = ±.010 XXX = ±.005 XXXX = ±.0005  
ANGLE = ±0° 30'

REMOVE BURRS AND SHARP EDGES: R.015 MAX  
MACHINE SURFACE FINISH: 125 RMS OR BETTER

DRAWINGS AND TECHNICAL DOCUMENTS CONTROLLED BY:  
**ACRADYNE MECHANICAL ENGINEERING**

**AES33\_ CV INLINE NUTRUNNER**  
3000 SERIES - GEN 3C

SIZE <b>D</b>	PART / DRAWING NUMBER <b>AES33_ CV</b>	REVISION <b>A</b>
SCALE 1:4	DO NOT SCALE DRAWING	SHEET 2 OF 2