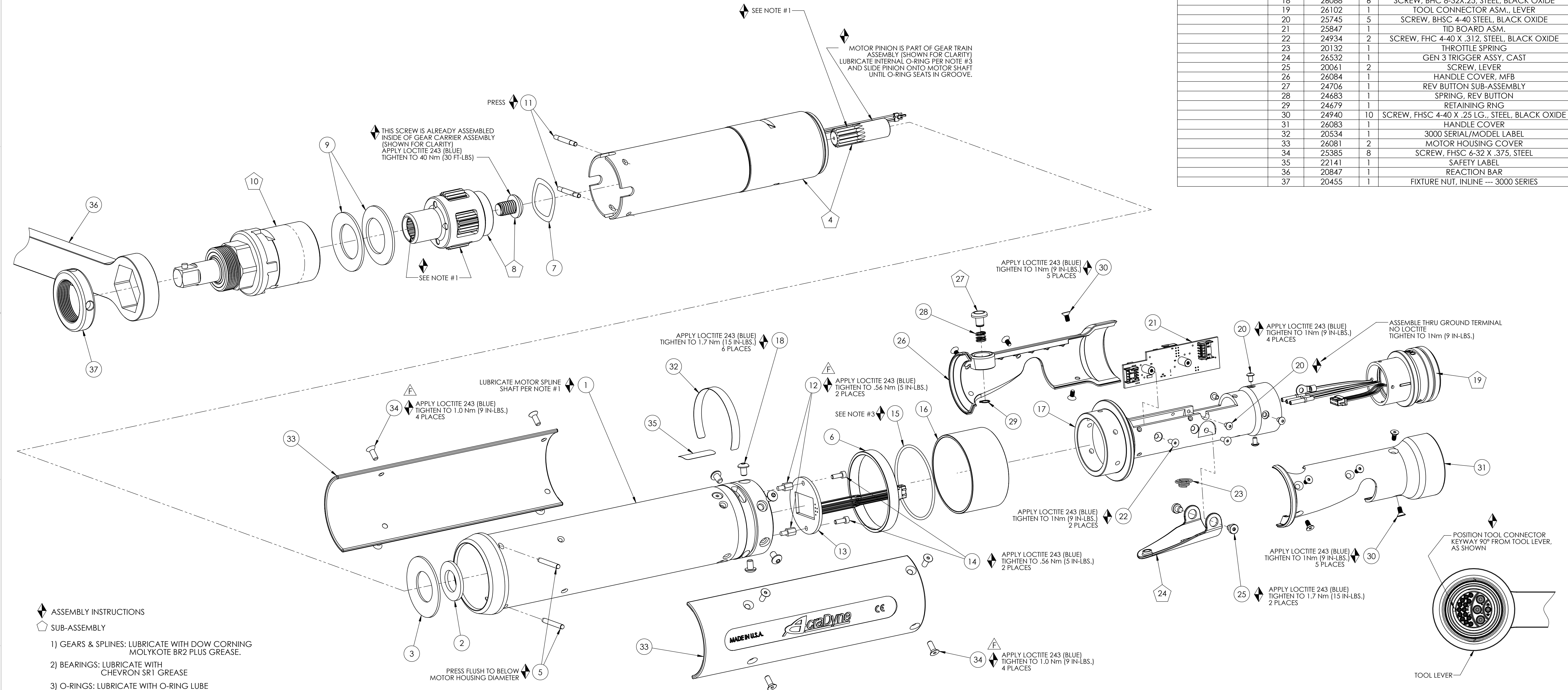


MODEL NO.	GEAR TRAIN ASM.	GEAR CARRIER ASM.
AES35075AV	26116	20924
AES35090AV	26115	26117
AES35110AV	26114	20924
AES35135AV	26113	26117
AES35170AV	26111	26117
AES35180AV	26111	26117

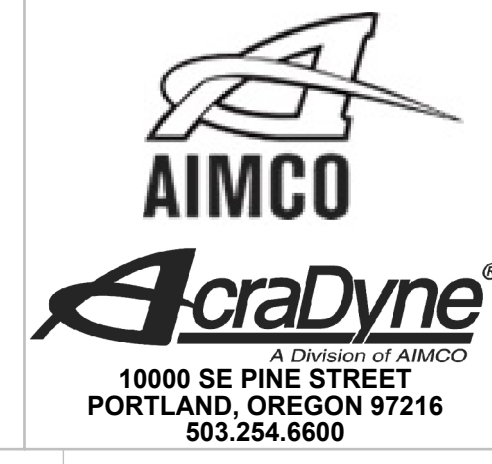
COMMENTS	ITEM NO.	PART NUMBER	QTY.	DESCRIPTION
	1	26058	1	MOTOR ASM., 5000 SERIES
	2	26198	1	THRUST WASHER
	3	26074	1	BELLEVILLE WASHER
	4	SEE CHART	1	GEAR TRAIN ASM.
	5	26530	2	DOWEL PIN, $\varnothing 1/8 \times 1.00$, STEEL
	6	27391	1	PIN RETAINER RING
	7	20912	1	WAVE SPRING --- 3000 SERIES
	8	SEE CHART	1	ASSEMBLY, GEAR CARRIER
	9	20911	2	BELLEVILLE WASHER
	10	20923	1	INLINE HEAD ASSY - 1/2 IN DRIVE
	11	20913	2	PIN, RETAINING
	12	25574	2	STANDOFF M-F, 4-40x1/4, 3/16 HEX, SS
	13	26095	1	LED BOARD ASM.
	14	26078	2	SHC SCREW, 4-40, BLACK OXIDE
	15	26080	1	O-RING, LED LIGHT RING COVER
	16	26079	1	LIGHT RING COVER, LED
	17	26082	1	LEVER HANDLE
	18	26088	6	SCREW, BHC 8-32X.25, STEEL, BLACK OXIDE
	19	26102	1	TOOL CONNECTOR ASM., LEVER
	20	25745	5	SCREW, BHSC 4-40 STEEL, BLACK OXIDE
	21	25847	1	TID BOARD ASM.
	22	24934	2	SCREW, FHC 4-40 X .312, STEEL, BLACK OXIDE
	23	20132	1	THROTTLE SPRING
	24	26532	1	GEN 3 TRIGGER ASSY, CAST
	25	20061	2	SCREW, LEVER
	26	26084	1	HANDLE COVER, MFB
	27	24706	1	REV BUTTON SUB-ASSEMBLY
	28	24683	1	SPRING, REV BUTTON
	29	24679	1	RETAINING RNG
	30	24940	10	SCREW, FHSC 4-40 X .25 LG., STEEL, BLACK OXIDE
	31	26083	1	HANDLE COVER
	32	20534	1	3000 SERIAL/MODEL LABEL
	33	26081	2	MOTOR HOUSING COVER
	34	25385	8	SCREW, FHSC 6-32 X .375, STEEL
	35	22141	1	SAFETY LABEL
	36	20847	1	REACTION BAR
	37	20455	1	FIXTURE NUT, INLINE --- 3000 SERIES



- ◆ ASSEMBLY INSTRUCTIONS
- ◻ SUB-ASSEMBLY

- 1) GEARS & SPLINES: LUBRICATE WITH DOW CORNING MOLYKOTE BR2 PLUS GREASE.
- 2) BEARINGS: LUBRICATE WITH CHEVRON SR1 GREASE
- 3) O-RINGS: LUBRICATE WITH O-RING LUBE

REQUIRED TOOLING
LOCTITE 243 (BLUE)
1/16 HEX WRENCH
5/64 HEX WRENCH
3/32 HEX WRENCH
7/32 HEX WRENCH
SNAP RING PLIERS - EXTERNAL TYPE



DOCUMENT CONTROL
 PRINTED COPIES OF THIS DOCUMENT ARE CONSIDERED TO BE UNCONTROLLED DOCUMENTS. HOLDERS ARE RESPONSIBLE FOR VERIFYING THE CURRENT REVISION LEVEL WITH PURCHASING OR ENGINEERING PRIOR TO USE OR FABRICATION. THE CONTROLLED VERSION OF THIS DOCUMENT IS ELECTRONICALLY MAINTAINED.

PROPRIETARY AND CONFIDENTIAL
 THIS DRAWING CONTAINS INFORMATION STRICTLY CONFIDENTIAL TO ACRADYNE/AIMCO. IN THE ABSENCE OF EXPRESSED WRITTEN PERMISSION, ACRADYNE/AIMCO HAS LOANED THIS COPY WITH THE MUTUAL UNDERSTANDING THAT (A) IT WILL NOT BE USED FOR ANY PURPOSE OTHER THAN FOR THAT IN WHICH IT WAS PROVIDED, (B) THE DATA CONTAINED HEREIN WILL NOT BE DISCLOSED TO OTHERS, (C) IT WILL NOT BE REPRODUCED, AND (D) IT WILL BE RETURNED TO ACRADYNE/AIMCO IMMEDIATELY UPON DEMAND.

REVISION LEVEL	REVISION RELEASE DATE	DESCRIPTION OF CHANGES MADE TO PART	ECN #	AUTHOR/ APPROVAL
REVISION BLOCK				

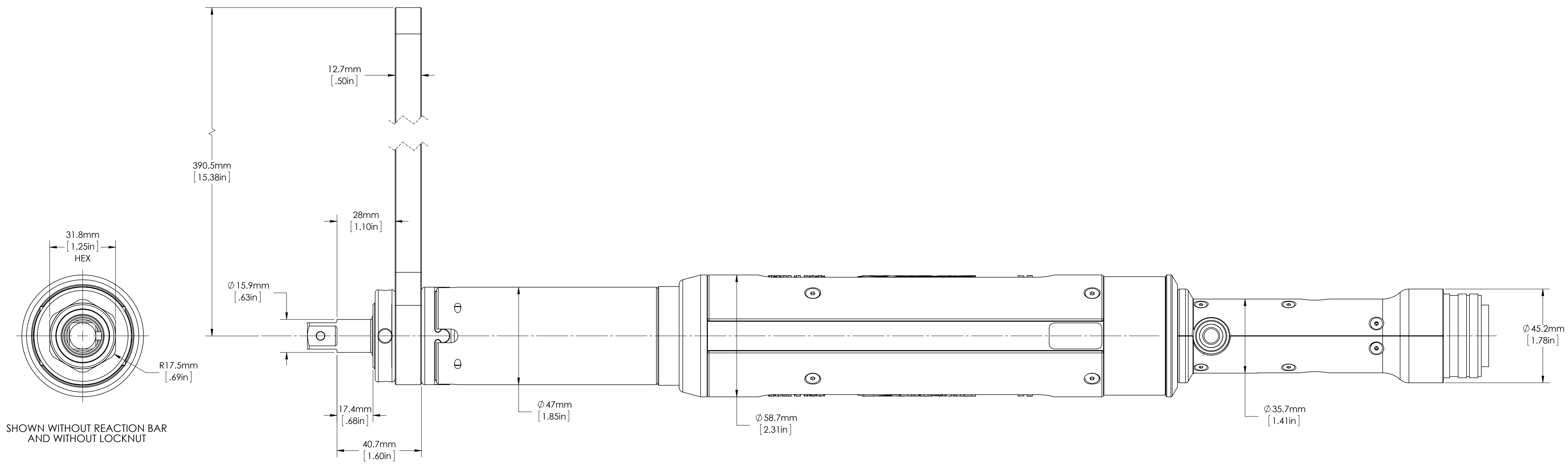
UNLESS OTHERWISE SPECIFIED, DIMENSIONS ARE IN INCHES
 DIMENSIONS AND TOLERANCING PER ANSI Y14.5
 SURFACE ROUGHNESS PER ANSI Y14.36

BLOCK TOLERANCING PER DECIMAL:
 X = ±.030 XX = ±.010 XXX = ±.005 XXXX = ±.0005
 ANGLE = ±0°30'

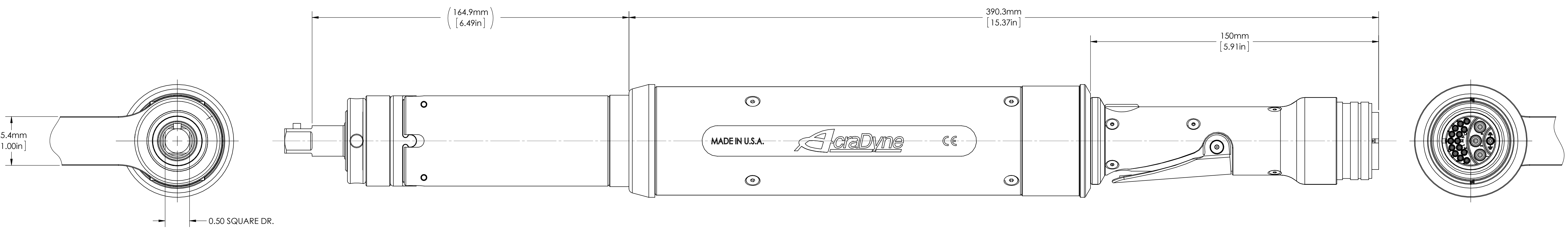
REMOVE BURRS AND SHARP EDGES: R.015 MAX
 MACHINE SURFACE FINISH: 125 RMS OR BETTER

DRAWINGS AND TECHNICAL DOCUMENTS CONTROLLED BY:
ACRADYNE MECHANICAL ENGINEERING

AES35__A INLINE NUTRUNNER 5000 SERIES, GEN III		
SIZE D	PART / DRAWING NUMBER AES35__A	REVISION F
SCALE 3:4	DO NOT SCALE DRAWING	SHEET 1 OF 4



SHOWN WITHOUT REACTION BAR AND WITHOUT LOCKNUT



CATALOG NO.	MODEL NO.
	AES35075AV
	AES35090AV
	AES35110AV
	AES35135AV
	AES35170AV



DOCUMENT CONTROL
 PRINTED COPIES OF THIS DOCUMENT ARE CONSIDERED TO BE UNCONTROLLED DOCUMENTS. HOLDERS ARE RESPONSIBLE FOR VERIFYING THE CURRENT REVISION LEVEL WITH PURCHASING OR ENGINEERING PRIOR TO USE OR FABRICATION. THE CONTROLLED VERSION OF THIS DOCUMENT IS ELECTRONICALLY MAINTAINED.

PROPRIETARY AND CONFIDENTIAL
 THIS DRAWING CONTAINS INFORMATION STRICTLY CONFIDENTIAL TO ACRADYNE/AIMCO. IN THE ABSENCE OF EXPRESSED WRITTEN PERMISSION, ACRADYNE/AIMCO HAS LOANED THIS COPY WITH THE MUTUAL UNDERSTANDING THAT (A) IT WILL NOT BE USED FOR ANY PURPOSE OTHER THAN FOR THAT IN WHICH IT WAS PROVIDED, (B) THE DATA CONTAINED HEREIN WILL NOT BE DISCLOSED TO OTHERS, (C) IT WILL NOT BE REPRODUCED, AND (D) IT WILL BE RETURNED TO ACRADYNE/AIMCO IMMEDIATELY UPON DEMAND.

REVISION LEVEL	REVISION RELEASE DATE	DESCRIPTION OF CHANGES MADE TO PART	ECN #	AUTHOR/ APPROVAL
REVISION BLOCK				

UNLESS OTHERWISE SPECIFIED, DIMENSIONS ARE IN INCHES
 DIMENSIONS AND TOLERANCING PER ANSI Y14.5
 SURFACE ROUGHNESS PER ANSI Y14.36

BLOCK TOLERANCING PER DECIMAL:
 X = ±.030 XX = ±.010 XXX = ±.005 XXXX = ±.0005
 ANGLE = ±0° 30'

REMOVE BURRS AND SHARP EDGES: R.015 MAX
 MACHINE SURFACE FINISH: 125 RMS OR BETTER

DRAWINGS AND TECHNICAL DOCUMENTS CONTROLLED BY:
ACRADYNE MECHANICAL ENGINEERING

AES35 __ AV TOOL OUTLINE 5000 SERIES, GEN III		
SIZE D	PART / DRAWING NUMBER AES35 __ AV	REVISION B
SCALE: 1:1	DO NOT SCALE DRAWING	SHEET 3 OF 6