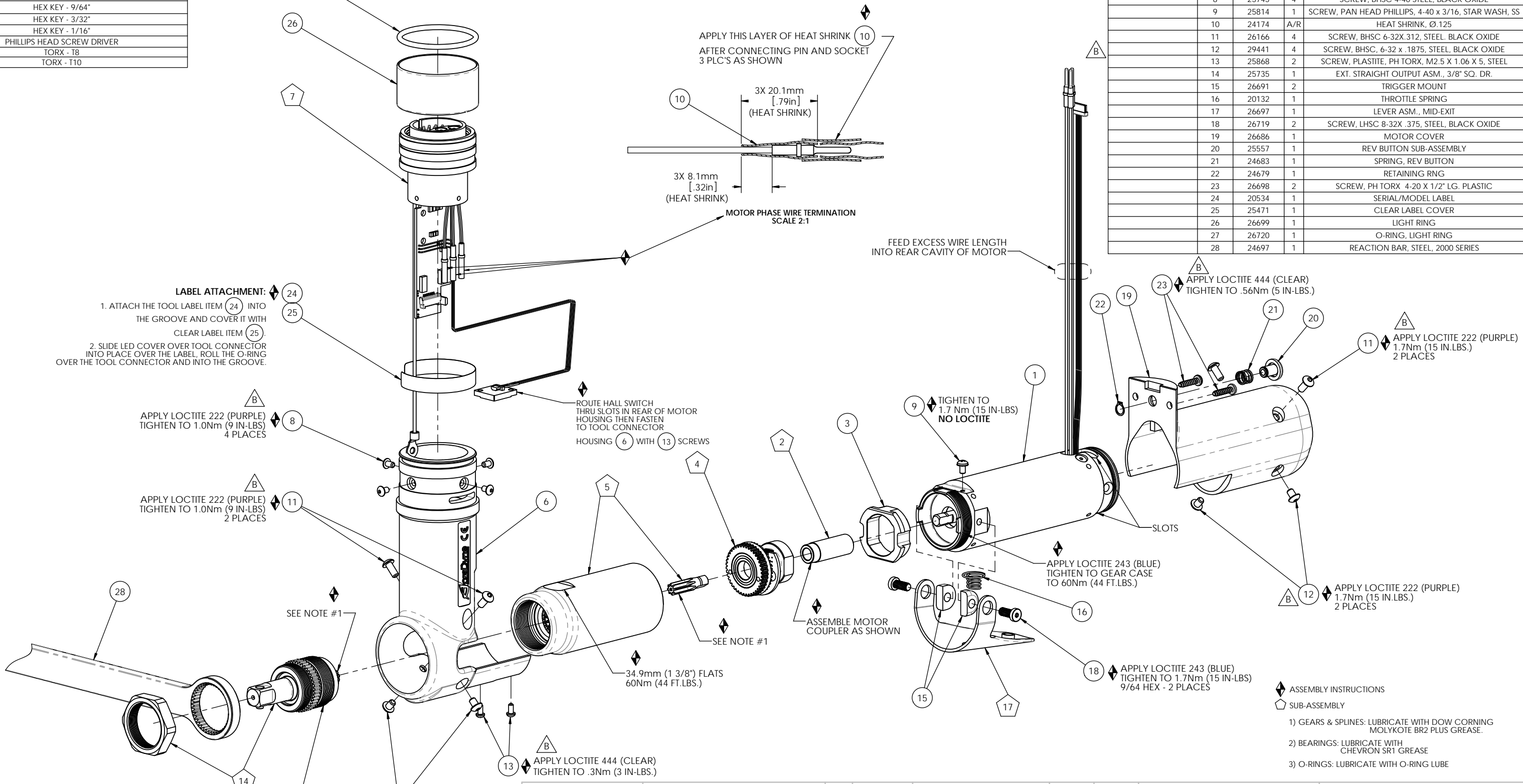


REQUIRED TOOLING	
Snap-on Crowfoot Wrench, 1/2" SQ. DR. X 1-3/8" OPENING	Snap-on Part Number SC044
Magnetic Vise Jaws - Part Number 1000-100	
Loctite 222 (Purple)	
Loctite 243 (Blue)	
Loctite 444 (Clear)	
Torque Wrench, 1/2" Drive	
External Snap Ring Pliers	
Hex Key - 9/64"	
Hex Key - 3/32"	
Hex Key - 1/16"	
Phillips Head Screw Driver	
Torx - T8	
Torx - T10	

TOOL MODEL	TRANSDUCER SUB-ASM.	GEAR CASE SUB-ASM.
AES4A22020BVM	25761.009	24901 (14T/14T)
AES4A22025BVM	25762.001	24894 (12T/12T)
AES4A22030BVM	25762.002	24902 (8T/14T)
AES4A22035BVM	25762.003	24903 (8T/12T)
AES4A22040BVM	25762.004	24904 (6T/14T)

COMMENTS	ITEM NO.	PART NUMBER	QTY.	DESCRIPTION
	1	26787	1	MOTOR ASM., MID-EXIT
	2	24780	1	MOTOR COUPLER SUB-ASM.
	3	25763	1	TRANSDUCER ADAPTOR
	4	SEE CHART	1	TRANSDUCER SUB-ASM
	5	SEE CHART	1	GEAR CASE SUB-ASM
	6	26695	1	TOOL CONNECTOR HOUSING
	7	26696	1	TOOL CONNECTOR ASSEMBLY, MID-EXIT
	8	25745	4	SCREW, BHSC 4-40 STEEL, BLACK OXIDE
	9	25814	1	SCREW, PAN HEAD PHILLIPS, 4-40 X 3/16, STAR WASH, SS
	10	24174	A/R	HEAT SHRINK, Ø 125
	11	26166	4	SCREW, BHSC 6-32X.312, STEEL, BLACK OXIDE
	12	29441	4	SCREW, BHSC, 6-32 X .1875, STEEL, BLACK OXIDE
	13	25868	2	SCREW, PLASTITE, PH TORX, M2.5 X 1.06 X 5, STEEL
	14	25735	1	EXT. STRAIGHT OUTPUT ASM., 3/8" SQ. DR.
	15	26691	2	TRIGGER MOUNT
	16	20132	1	THROTTLE SPRING
	17	26697	1	LEVER ASM., MID-EXIT
	18	26719	2	SCREW, LHSC 8-32X .375, STEEL, BLACK OXIDE
	19	26686	1	MOTOR COVER
	20	25557	1	REV BUTTON SUB-ASSEMBLY
	21	24683	1	SPRING, REV BUTTON
	22	24679	1	RETAINING RING
	23	26698	2	SCREW, PH TORX 4-20 X 1/2" LG. PLASTIC
	24	20534	1	SERIAL/MODEL LABEL
	25	25471	1	CLEAR LABEL COVER
	26	26699	1	LIGHT RING
	27	26720	1	O-RING, LIGHT RING
	28	24697	1	REACTION BAR, STEEL, 2000 SERIES



- ◆ ASSEMBLY INSTRUCTIONS
- ◊ SUB-ASSEMBLY
- 1) GEARS & SPLINES: LUBRICATE WITH DOW CORNING MOLYKOTE BR2 PLUS GREASE.
- 2) BEARINGS: LUBRICATE WITH CHEVRON SR1 GREASE
- 3) O-RINGS: LUBRICATE WITH O-RING LUBE



DOCUMENT CONTROL
 PRINTED COPIES OF THIS DOCUMENT ARE CONSIDERED TO BE UNCONTROLLED DOCUMENTS. HOLDERS ARE RESPONSIBLE FOR VERIFYING THE CURRENT REVISION LEVEL WITH PURCHASING OR ENGINEERING PRIOR TO USE OR FABRICATION. THE CONTROLLED VERSION OF THIS DOCUMENT IS ELECTRONICALLY MAINTAINED.

PROPRIETARY AND CONFIDENTIAL
 THIS DRAWING CONTAINS INFORMATION STRICTLY CONFIDENTIAL TO ACRADYNE/AIMCO. IN THE ABSENCE OF EXPRESSED WRITTEN PERMISSION, ACRADYNE/AIMCO HAS LOANED THIS COPY WITH THE MUTUAL UNDERSTANDING THAT (A) IT WILL NOT BE USED FOR ANY PURPOSE OTHER THAN FOR THAT IN WHICH IT WAS PROVIDED, (B) THE DATA CONTAINED HEREIN WILL NOT BE DISCLOSED TO OTHERS, (C) IT WILL NOT BE REPRODUCED, AND (D) IT WILL BE RETURNED TO ACRADYNE/AIMCO IMMEDIATELY UPON DEMAND.

REVISION LEVEL	REVISION RELEASE DATE	DESCRIPTION OF CHANGES MADE TO PART	ECN #	AUTHOR/ APPROVAL

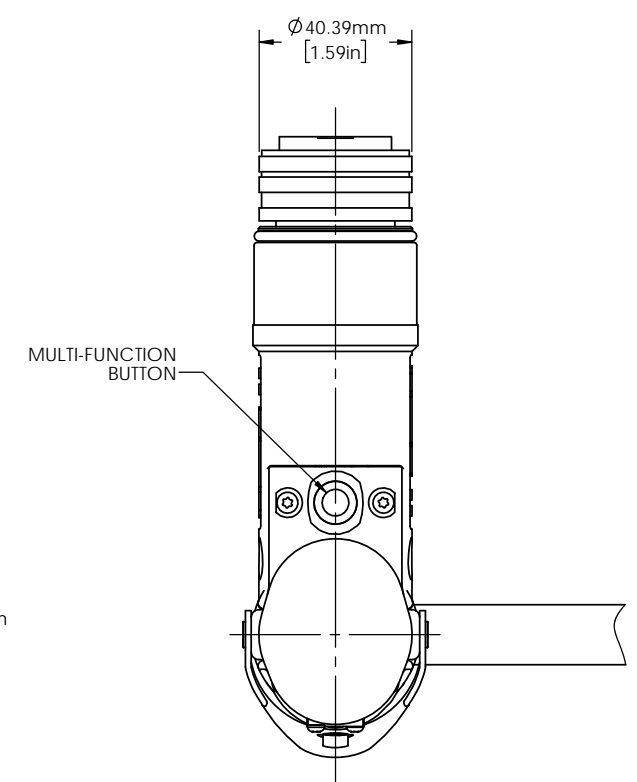
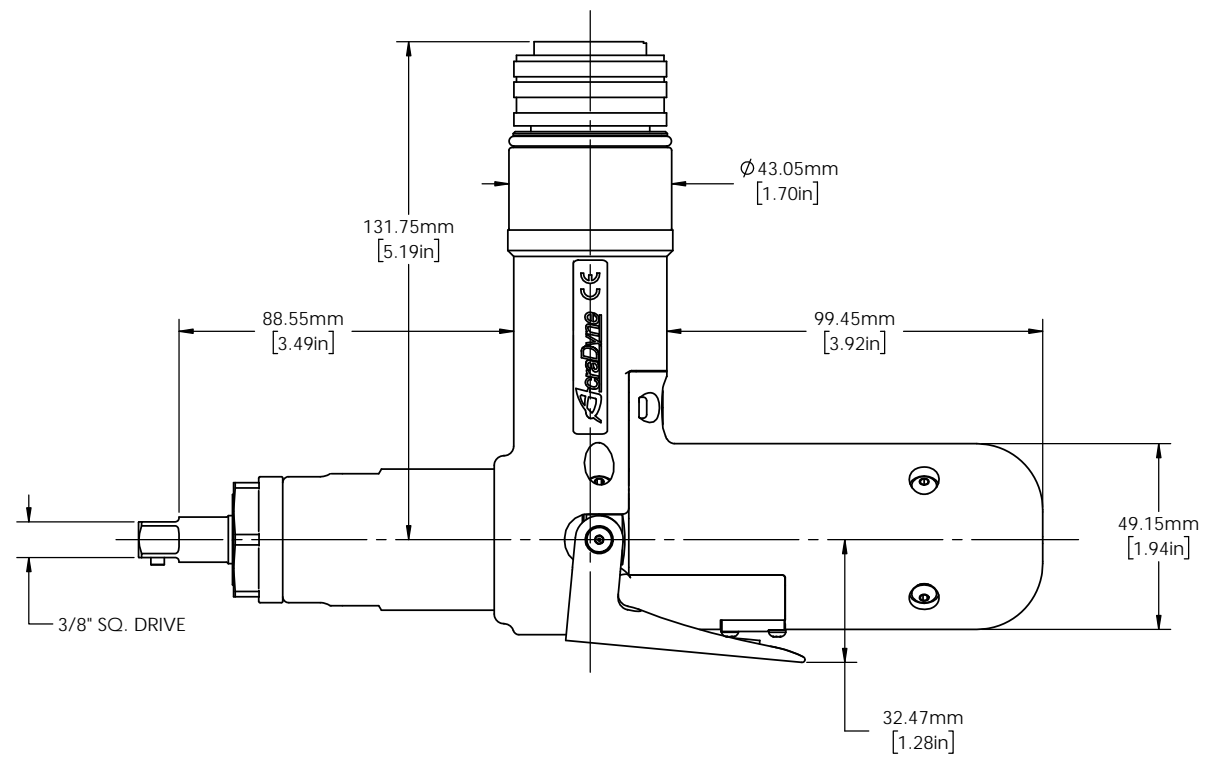
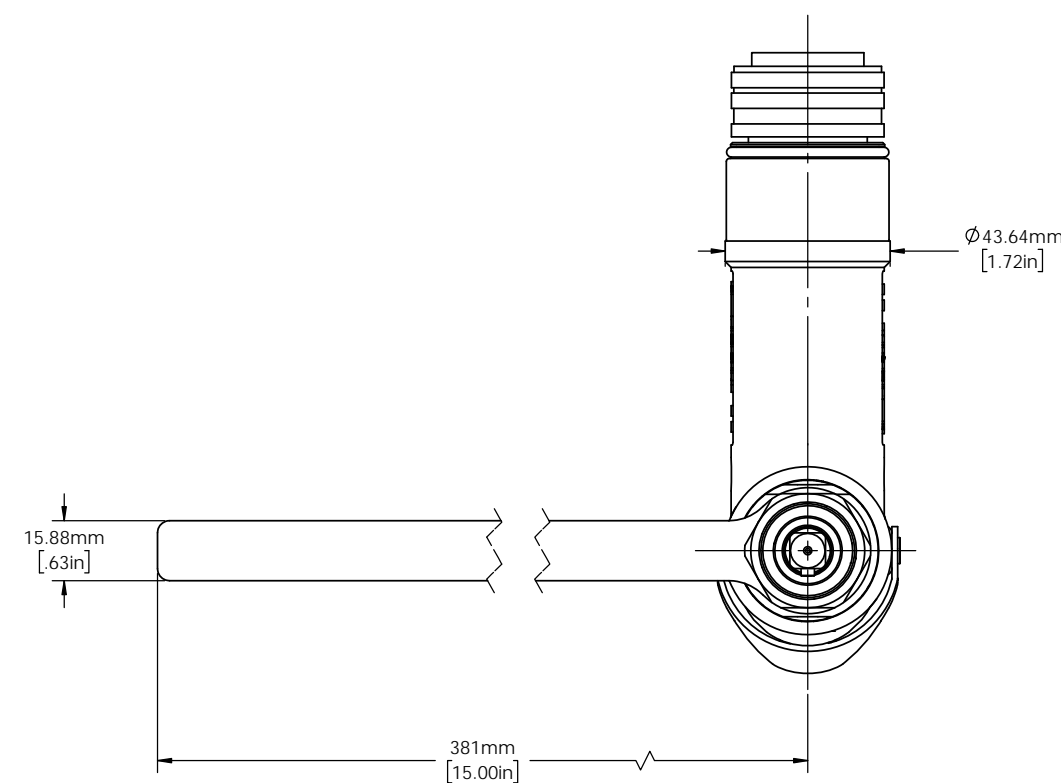
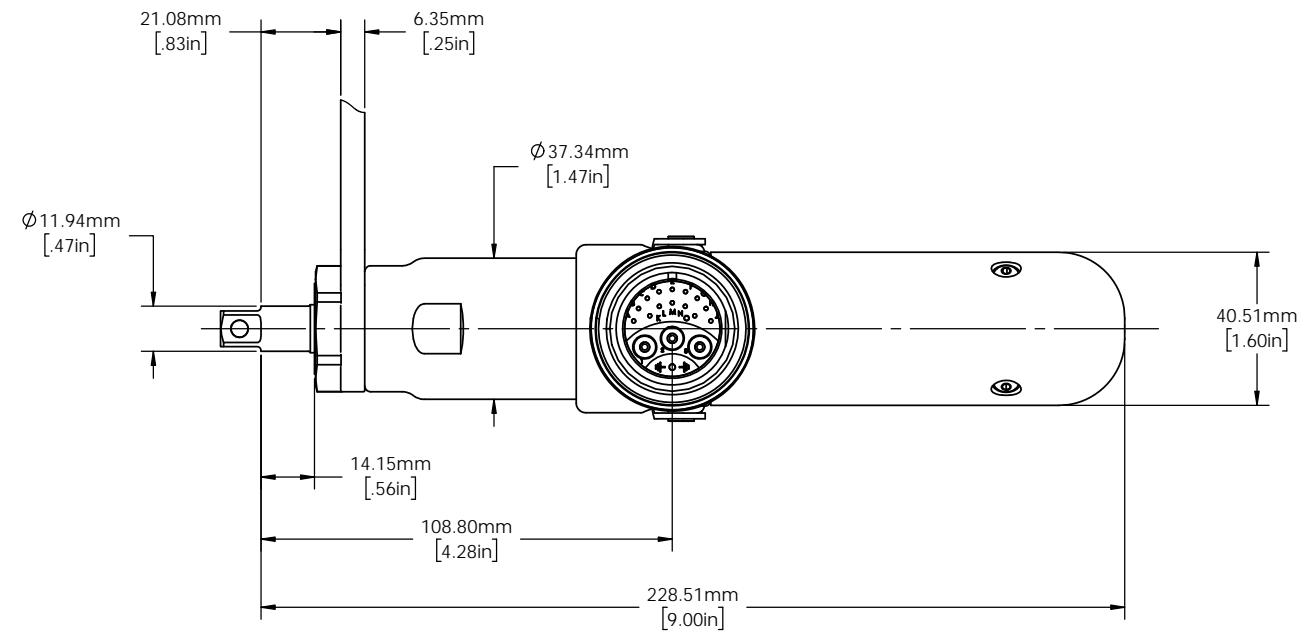
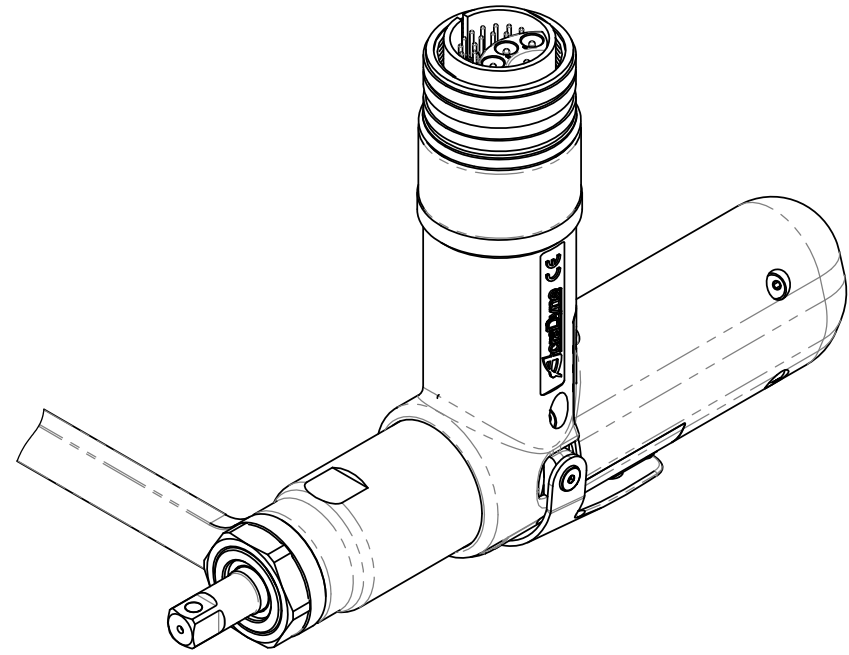
UNLESS OTHERWISE SPECIFIED, DIMENSIONS ARE IN INCHES
 DIMENSIONS AND TOLERANCING PER ANSI Y14.5 SURFACE ROUGHNESS PER ANSI Y14.36

BLOCK TOLERANCING PER DECIMAL:
 .X = ±.030 .XX = ±.010 .XXX = ±.005 .XXXX = ±.0005
 ANGLE = 30°/30°

REMOVE BURRS AND SHARP EDGES: R.015 MAX MACHINE SURFACE FINISH: 125 RMS OR BETTER

DRAWINGS AND TECHNICAL DOCUMENTS CONTROLLED BY:
ACRADYNE MECHANICAL ENGINEERING

AES4A220_ BVM INLINE NUTRUNNER GEN 4, 2000 SERIES		
SIZE	PART / DRAWING NUMBER	REVISION
D	AES4A220_ BVM	B
SCALE 1:1	DO NOT SCALE DRAWING	SHEET 1 OF 2



TOOL MODEL
AES4A22020BVM
AES4A22025BVM
AES4A22030BVM
AES4A22035BVM
AES4A22040BVM



DOCUMENT CONTROL
 PRINTED COPIES OF THIS DOCUMENT ARE CONSIDERED TO BE UNCONTROLLED DOCUMENTS. HOLDERS ARE RESPONSIBLE FOR VERIFYING THE CURRENT REVISION LEVEL WITH PURCHASING OR ENGINEERING PRIOR TO USE OR FABRICATION. THE CONTROLLED VERSION OF THIS DOCUMENT IS ELECTRONICALLY MAINTAINED.

PROPRIETARY AND CONFIDENTIAL
 THIS DRAWING CONTAINS INFORMATION STRICTLY CONFIDENTIAL TO ACRADYNE/AIMCO. IN THE ABSENCE OF EXPRESSED WRITTEN PERMISSION, ACRADYNE/AIMCO HAS LOANED THIS COPY WITH THE MUTUAL UNDERSTANDING THAT (A) IT WILL NOT BE USED FOR ANY PURPOSE OTHER THAN FOR THAT IN WHICH IT WAS PROVIDED, (B) THE DATA CONTAINED HEREIN WILL NOT BE DISCLOSED TO OTHERS, (C) IT WILL NOT BE REPRODUCED, AND (D) IT WILL BE RETURNED TO ACRADYNE/AIMCO IMMEDIATELY UPON DEMAND.

REVISION LEVEL	REVISION RELEASE DATE	DESCRIPTION OF CHANGES MADE TO PART	ECN #	AUTHOR/ APPROVAL

UNLESS OTHERWISE SPECIFIED, DIMENSIONS ARE IN INCHES
 DIMENSIONS AND TOLERANCING PER ANSI Y14.5
 SURFACE ROUGHNESS PER ANSI Y14.36

BLOCK TOLERANCING PER DECIMAL:
 .X = ±.030 .XX = ±.010 .XXX = ±.005 .XXXX = ±.0005
 ANGLE = 30°

REMOVE BURRS AND SHARP EDGES: R.015 MAX
 MACHINE SURFACE FINISH: 125 RMS OR BETTER

DRAWINGS AND TECHNICAL DOCUMENTS CONTROLLED BY:
ACRADYNE MECHANICAL ENGINEERING

AES4A220_ BVM INLINE NUTRUNNER GEN 4, 2000 SERIES		
SIZE	PART / DRAWING NUMBER	REVISION
D	AES4A220_ BVM	B
SCALE 1:1	DO NOT SCALE DRAWING	SHEET 2 OF 2