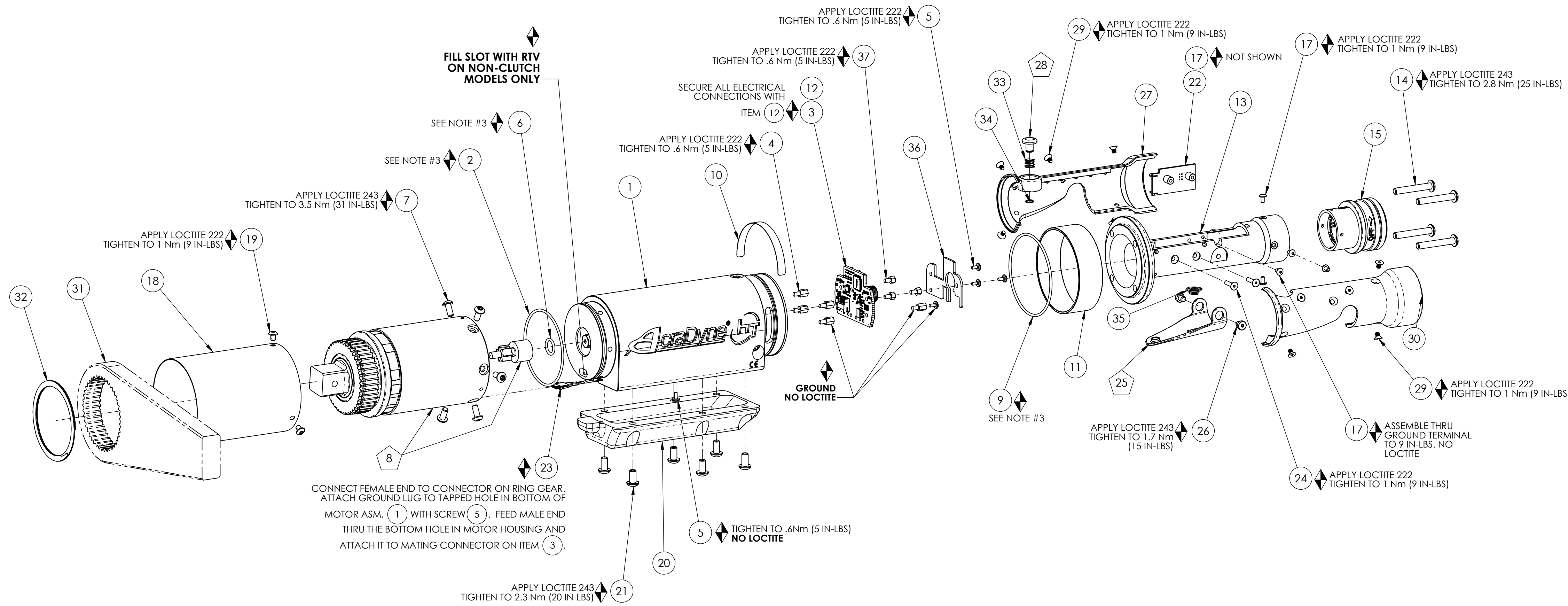


LEVER HANDLE AND COMPONENTS REMOVED FOR CLARITY



COMMENTS	ITEM NO.	PART NUMBER	QTY.	DESCRIPTION
	1	26481	1	MOTOR ASM.
	2	26488	1	O-RING, MOTOR HOUSING
	3	27727	1	TID BOARD, POPULATED W/AMP
	4	25574	5	STANDOFF M-F, 4-40x1/4, 3/16 HEX, SS
	5	25573	5	SCREW PHP 4-40 X 3/16 18-8 SS
	6	26299	1	O-RING, PINION
	7	29285	6	SCREW, BHSC, TORX, 8-32 x .38, STEEL
	8	SEE CHART	1	GEAR BOX ASM.
	9	26487	1	O-RING, LED COVER
	10	20534	1	SERIAL/MODEL LABEL
	11	26483	1	LED COVER
NOT SHOWN	12	27464	A/R	TWISTED WAXED LINEN TWINE
	13	26493	1	LEVER HANDLE
	14	27401	4	SCREW, BHSC 10-32 X 1.25, STEEL, BLK OXIDE
	15	27660	1	TOOL CONNECTOR ASM., STRAIGHT
NOT SHOWN	16	26526	1	CABLE, TRIGGER, LEVER
	17	25745	5	SCREW, BHSC 4-40 STEEL, BLACK OXIDE
	18	26495	1	GEAR CASE COVER
	19	26319	3	SCREW, BHSC 6-32 X .188, 18-8 SS
	20	26297	1	TRAY, WIRE, "D" & LEVER HANDLE
	21	26206	6	SCREW, BHSC 10-32 X .375, STEEL
	22	26285	1	LEVER TRIGGER PCB ASM.
	23	28211	1	(4) LINE MALE/FEMALE JUMPER ASM.
	24	26461	2	SCREW, FHC 4-40 X .50 LG., STEEL, BLACK OXIDE
	25	26532	1	GEN 3 TRIGGER ASSY., CAST
	26	20061	2	SCREW, LEVER
	27	26084	1	HANDLE COVER, MFB
	28	24706	1	REV BUTTON SUB-ASSEMBLY
	29	24938	10	SCREW, FHSC 4-40X.188, STEEL, BLACK OXIDE
	30	26083	1	HANDLE COVER
	31	26896	1	CHOOSE REACTION BAR
	32	26514	1	RETAINING RING, SPIRAL, Ø2.441 X Ø2.105 X .078
	33	24683	1	SPRING, REV BUTTON
	34	24679	1	RETAINING RING
	35	20132	1	THROTTLE SPRING
	36	29336	1	TID BOARD WIRE INSULATOR
	37	29337	3	STANDOFF, M-F, 4-40 X 1/8, SS

MODEL NO.	GEAR BOX ASM.
AES4A66250B	28658
AES4A66425B	28798
AES4A66625B	28108
AES4A66925B	28109

- ◆ ASSEMBLY INSTRUCTIONS
- ◊ SUB-ASSEMBLY

- 1) GEARS & SPLINES: LUBRICATE WITH DOW CORNING MOLYKOTE BR2 PLUS GREASE.
- 2) BEARINGS: LUBRICATE WITH CHEVRON SR1 GREASE
- 3) O-RINGS: LUBRICATE WITH O-RING LUBE



DOCUMENT CONTROL
 PRINTED COPIES OF THIS DOCUMENT ARE CONSIDERED TO BE UNCONTROLLED DOCUMENTS. HOLDERS ARE RESPONSIBLE FOR VERIFYING THE CURRENT REVISION LEVEL WITH PURCHASING OR ENGINEERING PRIOR TO USE OR FABRICATION. THE CONTROLLED VERSION OF THIS DOCUMENT IS ELECTRONICALLY MAINTAINED.

PROPRIETARY AND CONFIDENTIAL
 THIS DRAWING CONTAINS INFORMATION STRICTLY CONFIDENTIAL TO ACRADYNE/AIMCO. IN THE ABSENCE OF EXPRESSED WRITTEN PERMISSION, ACRADYNE/AIMCO HAS LOANED THIS COPY WITH THE MUTUAL UNDERSTANDING THAT (A) IT WILL NOT BE USED FOR ANY PURPOSE OTHER THAN FOR THAT IN WHICH IT WAS PROVIDED, (B) THE DATA CONTAINED HEREIN WILL NOT BE DISCLOSED TO OTHERS, (C) IT WILL NOT BE REPRODUCED, AND (D) IT WILL BE RETURNED TO ACRADYNE/AIMCO IMMEDIATELY UPON DEMAND.

REVISION LEVEL	REVISION RELEASE DATE	DESCRIPTION OF CHANGES MADE TO PART	ECN #	AUTHOR/ APPROVAL
REVISION BLOCK				

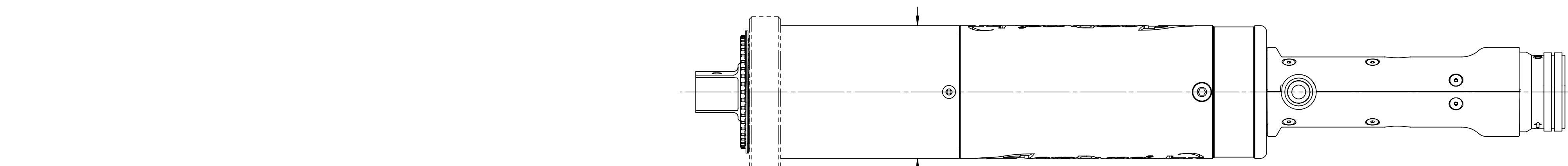
UNLESS OTHERWISE SPECIFIED, DIMENSIONS ARE IN INCHES
 DIMENSIONS AND TOLERANCING PER ANSI Y14.5
 SURFACE ROUGHNESS PER ANSI Y14.36

BLOCK TOLERANCING PER DECIMAL:
 .X = ±.030 .XX = ±.010 .XXX = ±.005 .XXXX = ±.0005
 ANGLE = 0° 30'

REMOVE BURRS AND SHARP EDGES: R.015 MAX
 MACHINE SURFACE FINISH: 125 RMS OR BETTER

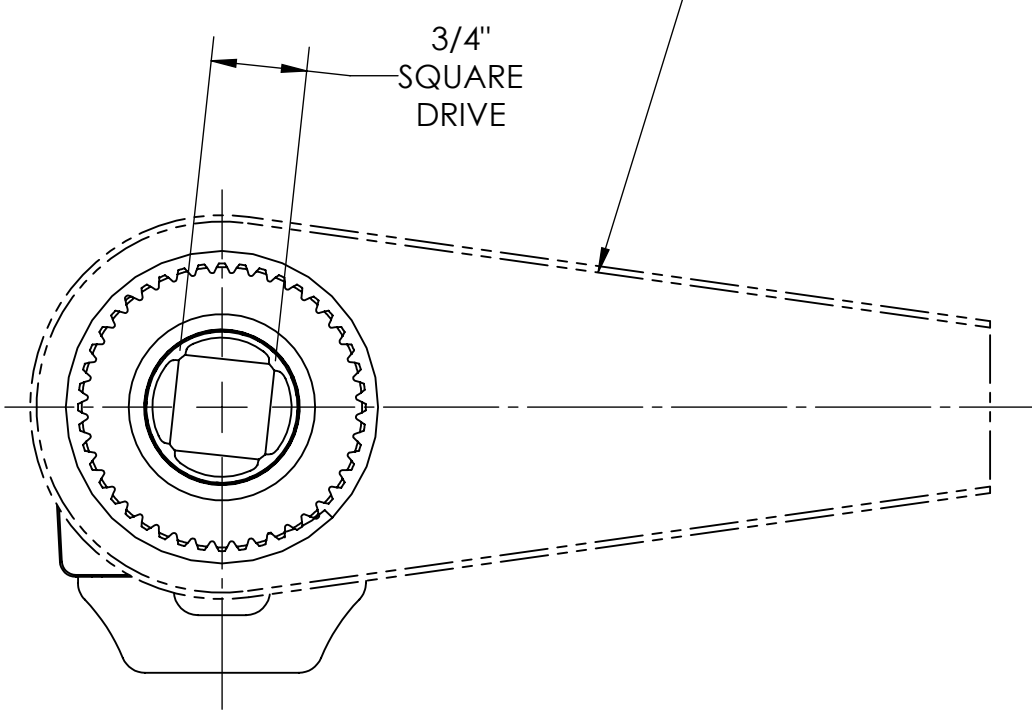
DRAWINGS AND TECHNICAL DOCUMENTS CONTROLLED BY:
ACRADYNE MECHANICAL ENGINEERING

INLINE NUTRUNNER 6000 SERIES		
SIZE	PART / DRAWING NUMBER	REVISION
D	AES4A66__B	A
SCALE 1:2	DO NOT SCALE DRAWING	SHEET 1 OF 2

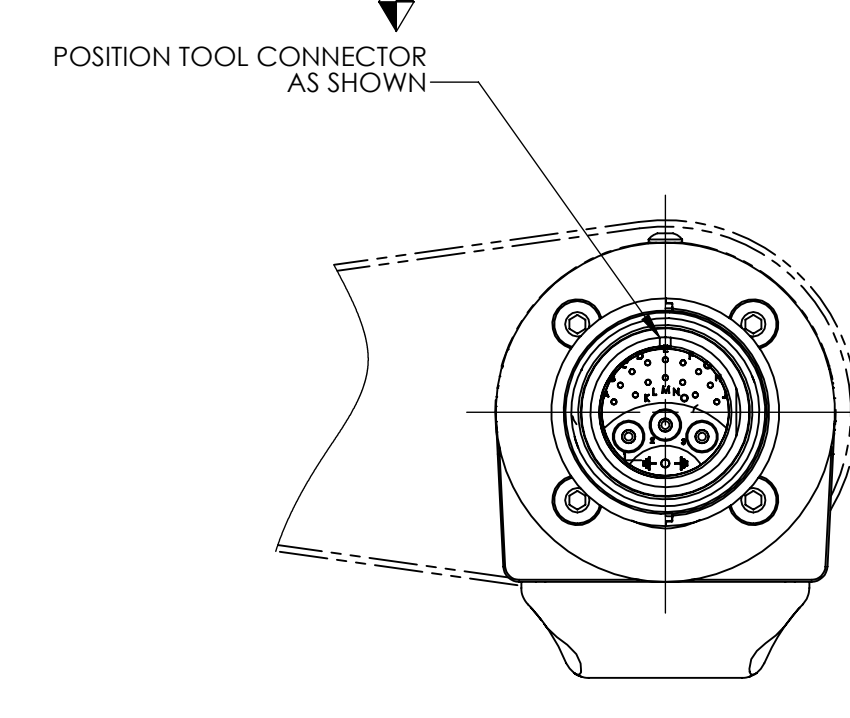
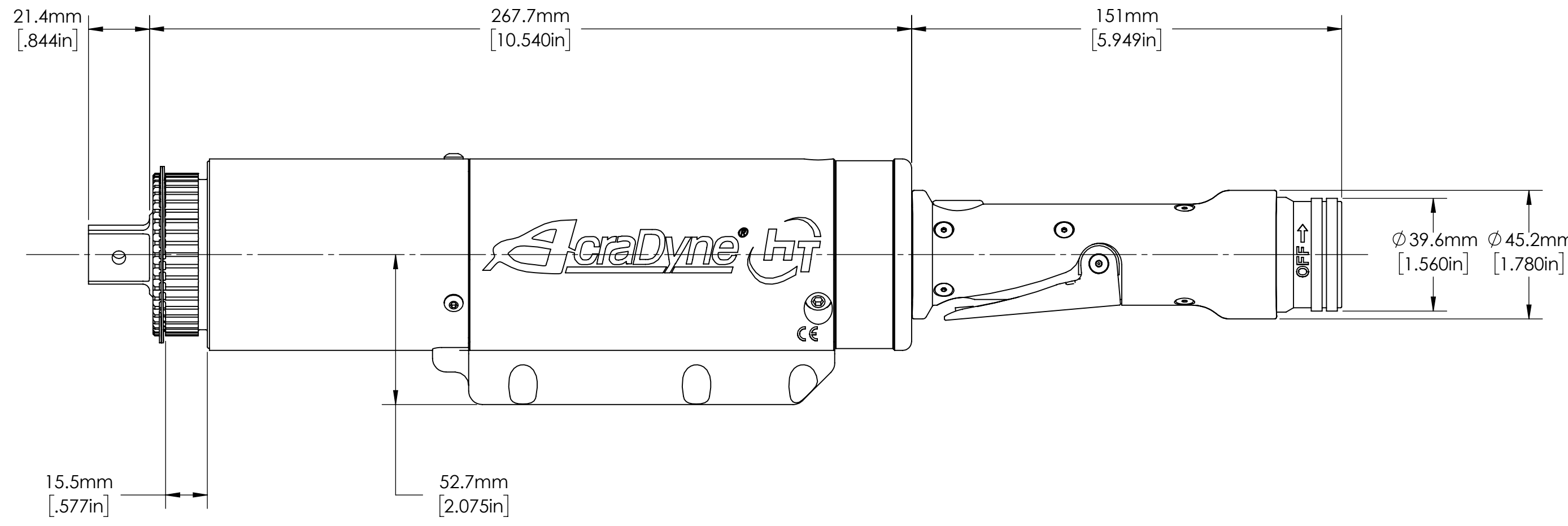


Ø 67.3mm
[2.650in]

**NOTE:
REACTION BAR GEOMETRY
TO CHANGE DEPENDING
ON REACTION BAR CHOSEN.**



3/4"
SQUARE
DRIVE



POSITION TOOL CONNECTOR
AS SHOWN

**REACTION BAR
REMOVED FOR CLARITY**

MODEL NO.
AES4A66250B
AES4A66425B
AES4A66625B
AES4A66925B



DOCUMENT CONTROL
PRINTED COPIES OF THIS DOCUMENT ARE CONSIDERED TO BE UNCONTROLLED DOCUMENTS. HOLDERS ARE RESPONSIBLE FOR VERIFYING THE CURRENT REVISION LEVEL WITH PURCHASING OR ENGINEERING PRIOR TO USE OR FABRICATION. THE CONTROLLED VERSION OF THIS DOCUMENT IS ELECTRONICALLY MAINTAINED.

PROPRIETARY AND CONFIDENTIAL
THIS DRAWING CONTAINS INFORMATION STRICTLY CONFIDENTIAL TO ACRADYNE/AIMCO. IN THE ABSENCE OF EXPRESSED WRITTEN PERMISSION, ACRADYNE/AIMCO HAS LOANED THIS COPY WITH THE MUTUAL UNDERSTANDING THAT (A) IT WILL NOT BE USED FOR ANY PURPOSE OTHER THAN FOR THAT IN WHICH IT WAS PROVIDED, (B) THE DATA CONTAINED HEREIN WILL NOT BE DISCLOSED TO OTHERS, (C) IT WILL NOT BE REPRODUCED, AND (D) IT WILL BE RETURNED TO ACRADYNE/AIMCO IMMEDIATELY UPON DEMAND.

REVISION LEVEL	REVISION RELEASE DATE	DESCRIPTION OF CHANGES MADE TO PART	ECN #	AUTHOR/ APPROVAL
REVISION BLOCK				

**UNLESS OTHERWISE SPECIFIED,
DIMENSIONS ARE IN INCHES**
DIMENSIONS AND TOLERANCING PER ANSI Y14.5
SURFACE ROUGHNESS PER ANSI Y14.36

BLOCK TOLERANCING PER DECIMAL:
.X = ±.030 .XX = ±.010 .XXX = ±.005 .XXXX = ±.0005
ANGLE = ±0° 30'

REMOVE BURRS AND SHARP EDGES: R.015 MAX
MACHINE SURFACE FINISH: 125 RMS OR BETTER

**DRAWINGS AND TECHNICAL DOCUMENTS CONTROLLED BY:
ACRADYNE MECHANICAL ENGINEERING**

INLINE NUTRUNNER 6000 SERIES		
SIZE	PART / DRAWING NUMBER	REVISION
D	AES4A66__B	A
SCALE 2:3	DO NOT SCALE DRAWING	SHEET 2 OF 2