

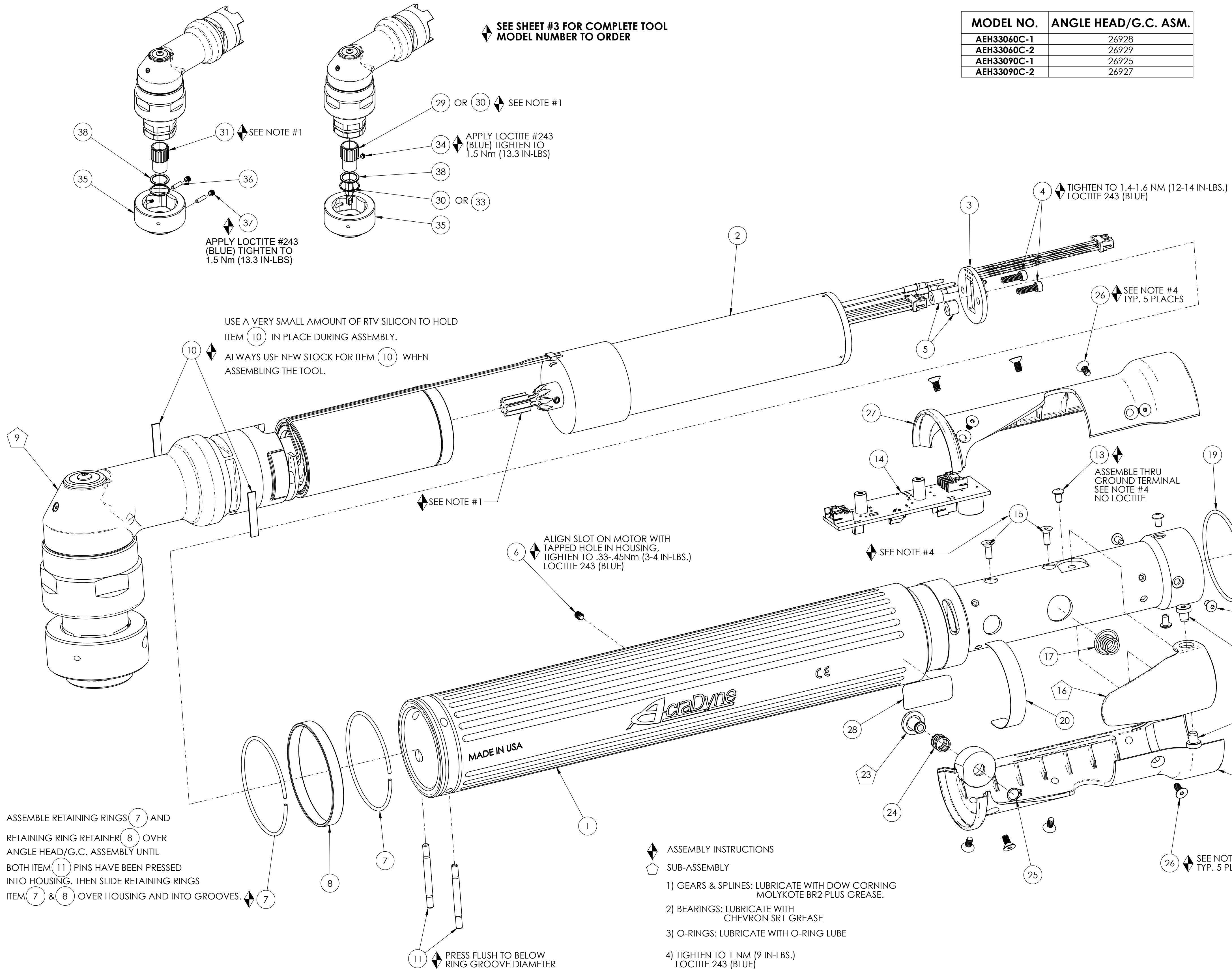
TANG HOLDER

BIT HOLDER

SEE SHEET #3 FOR COMPLETE TOOL MODEL NUMBER TO ORDER

MODEL NO.	ANGLE HEAD/G.C. ASM.
AEH33060C-1	26928
AEH33060C-2	26929
AEH33090C-1	26925
AEH33090C-2	26927

COMMENTS	ITEM NO.	PART NUMBER	QTY.	DESCRIPTION
	1	27031	1	MOTOR HOUSING ASSEMBLY
	2	25525	1	MOTOR ASSY, 9T, 3000 SERIES
	3	25063	1	LED BOARD ASM.
	4	25075	2	SCREW, SHC 4-40X.375, STEEL, BLACK OXIDE
	5	25430	2	STAND-OFF, LED, 3000 SERIES
	6	27027	1	SCREW, SET 5-40X.188,STEEL,BLK OXIDE
	7	25107	2	RETAINING RING, PIN RETAINER
	8	25106	1	PIN RETAINER RING
	9	SEE CHART	1	ANGLE HEAD G.C. ASM., HOLD & DRIVE
	10	26184	2	ADAPTER INSERT, GEN 3B 3000 SERIES
	11	26793	2	RETAINING PIN, .125 OD X 1-1/4
	12	26102	1	TOOL CONNECTOR ASM., LEVER
	13	25745	5	SCREW, BHSC 4-40 STEEL, BLACK OXIDE
	14	25847	1	TID BOARD ASM.
	15	24934	2	SCREW, FHC 4-40 X .312, STEEL, BLACK OXIDE
	16	26532	1	GEN 3 TRIGGER ASSY, CAST
	17	20132	1	THROTTLE SPRING
	18	20061	2	SCREW, LEVER
	19	25072	1	O-RING, LED LIGHT RING COVER
	20	20534	1	3000 SERIAL/MODEL LABEL
	21	25058	1	LIGHT RING COVER, LED
	22	26084	1	HANDLE COVER, MFB
	23	24706	1	REV BUTTON SUB-ASSEMBLY
	24	24683	1	SPRING, REV BUTTON
	25	24679	1	RETAINING RING
	26	24940	10	SCREW, FHSC 4-40 X .25 LG., STEEL, BLACK OXIDE
	27	26083	1	HANDLE COVER
	28	22141	1	SAFETY LABEL
	29	26564	1	BIT HOLDER, 1/4" HEX
	30	26565	1	BIT HOLDER, 5/16" HEX
	31	26557	1	TANG HOLDER
	32	26640	1	HEX BIT, 1/4"
	33	26645	1	HEX BIT, 5/16"
SEE SHEET #3, COLUMN #3	34	26571	1	SET-SCREW, 8-32X.125, STEEL, BLACK OXIDE
USE WITH ITEM #29 OR #30 ONLY	35	26915	1	HEX SOCKET, HOLD & DRIVE
SEE SHEET #3, COLUMN #1 & #2	36	26555	2	DOWEL PIN Ø 1/8 X 7/16, ALLOY STEEL
	37	26556	2	SET SCREW, 10-32X.188, STEEL, BLACK OXIDE
	38	27466	1	THRUST WASHER, 18MM HEAD



ASSEMBLE RETAINING RINGS (7) AND RETAINING RING RETAINER (8) OVER ANGLE HEAD/G.C. ASSEMBLY UNTIL BOTH ITEM (11) PINS HAVE BEEN PRESSED INTO HOUSING, THEN SLIDE RETAINING RINGS ITEM (7) & (8) OVER HOUSING AND INTO GROOVES.

- ◆ ASSEMBLY INSTRUCTIONS
 ◊ SUB-ASSEMBLY
- 1) GEARS & SPLINES: LUBRICATE WITH DOW CORNING MOLYKOTE BR2 PLUS GREASE.
 - 2) BEARINGS: LUBRICATE WITH CHEVRON SR1 GREASE
 - 3) O-RINGS: LUBRICATE WITH O-RING LUBE
 - 4) TIGHTEN TO 1 NM (9 IN-LBS.) LOCTITE 243 (BLUE)

REQUIRED TOOLING
LOCTITE 243 (BLUE)
FLAT BLADE SCREW DRIVER
1/16 HEX WRENCH
5/64 HEX WRENCH
3/32 HEX WRENCH
SNAP RING PLIERS - EXTERNAL TYPE



DOCUMENT CONTROL
 PRINTED COPIES OF THIS DOCUMENT ARE CONSIDERED TO BE UNCONTROLLED DOCUMENTS. HOLDERS ARE RESPONSIBLE FOR VERIFYING THE CURRENT REVISION LEVEL WITH PURCHASING OR ENGINEERING PRIOR TO USE OR FABRICATION. THE CONTROLLED VERSION OF THIS DOCUMENT IS ELECTRONICALLY MAINTAINED.

PROPRIETARY AND CONFIDENTIAL
 THIS DRAWING CONTAINS INFORMATION STRICTLY CONFIDENTIAL TO ACRADYNE/AIMCO. IN THE ABSENCE OF EXPRESSED WRITTEN PERMISSION, ACRADYNE/AIMCO HAS LOANED THIS COPY WITH THE MUTUAL UNDERSTANDING THAT (A) IT WILL NOT BE USED FOR ANY PURPOSE OTHER THAN FOR THAT IN WHICH IT WAS PROVIDED, (B) THE DATA CONTAINED HEREIN WILL NOT BE DISCLOSED TO OTHERS, (C) IT WILL NOT BE REPRODUCED, AND (D) IT WILL BE RETURNED TO ACRADYNE/AIMCO IMMEDIATELY UPON DEMAND.

REVISION LEVEL	REVISION RELEASE DATE	DESCRIPTION OF CHANGES MADE TO PART	ECN #	AUTHOR / APPROVAL
REVISION BLOCK				


UNLESS OTHERWISE SPECIFIED, DIMENSIONS ARE IN INCHES
 DIMENSIONS AND TOLERANCING PER ANSI Y14.5
 SURFACE ROUGHNESS PER ANSI Y14.36

BLOCK TOLERANCING PER DECIMAL:
 X = ±.030 XX = ±.010 XXX = ±.005 XXXX = ±.0005
 ANGLE = ±0° 30'



REMOVE BURRS AND SHARP EDGES: R.015 MAX
 MACHINE SURFACE FINISH: 125 RMS OR BETTER

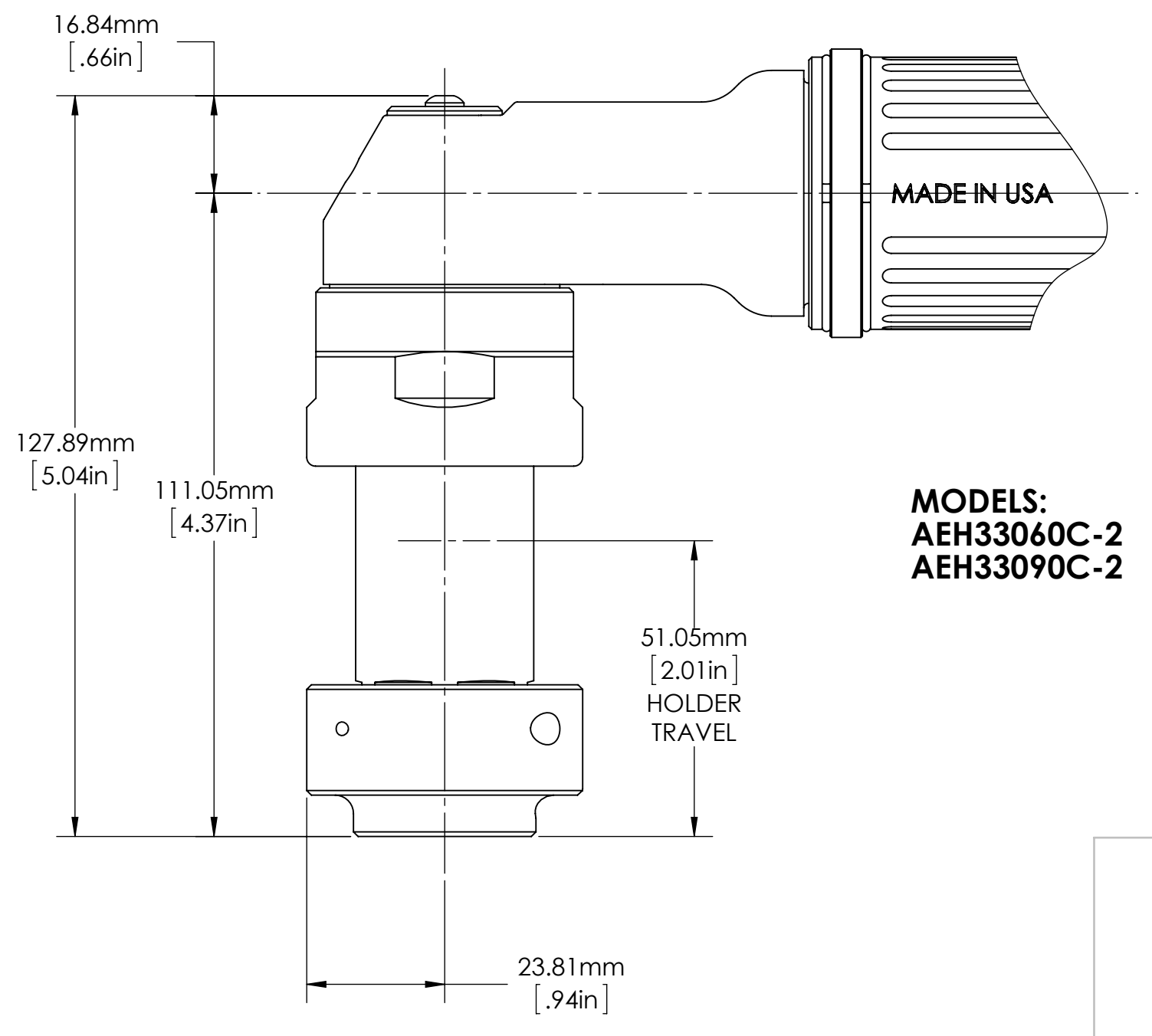
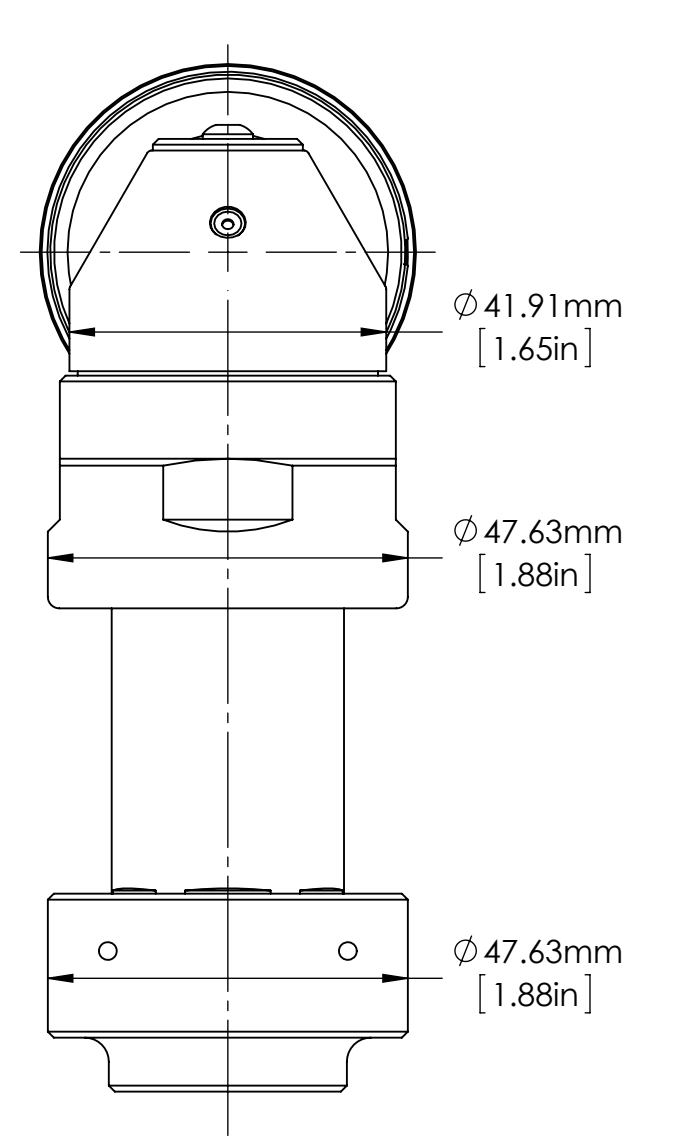
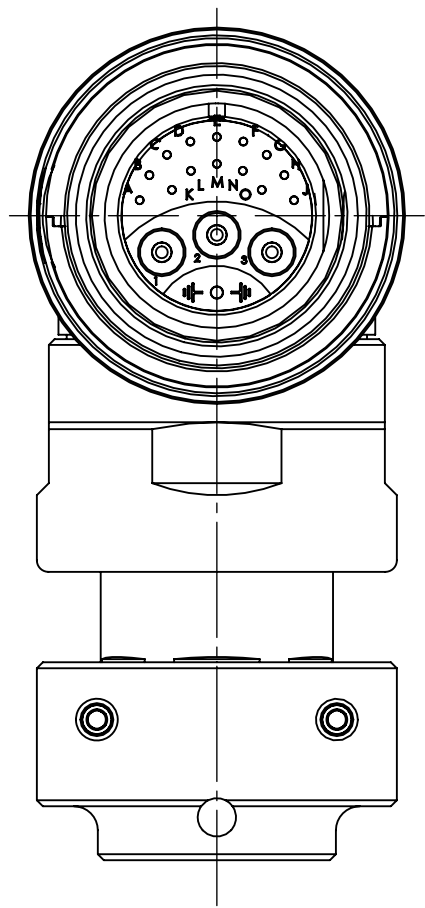
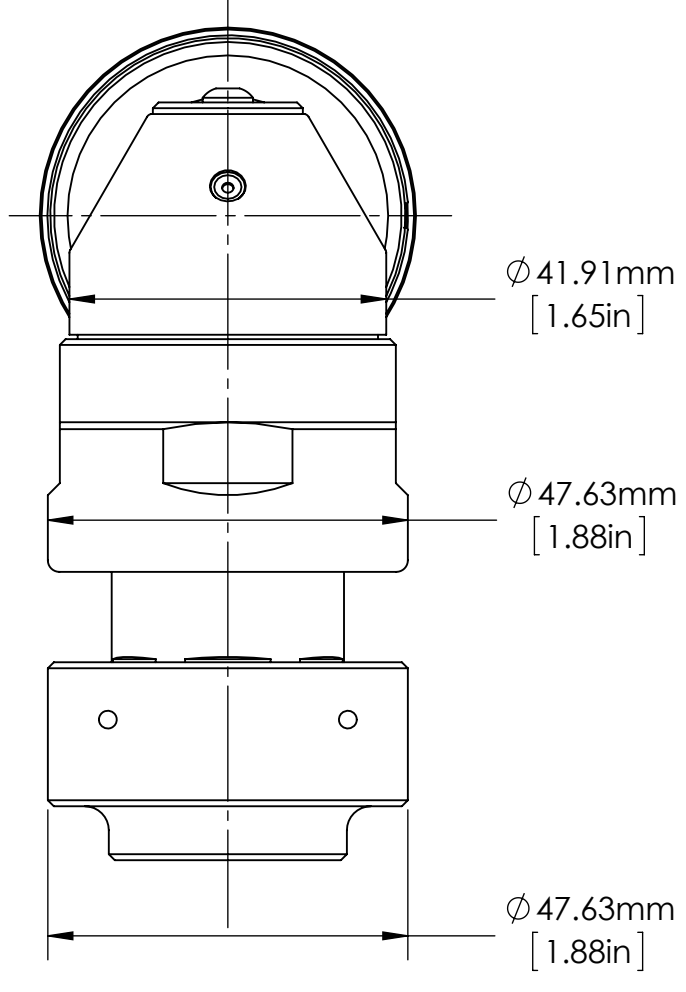
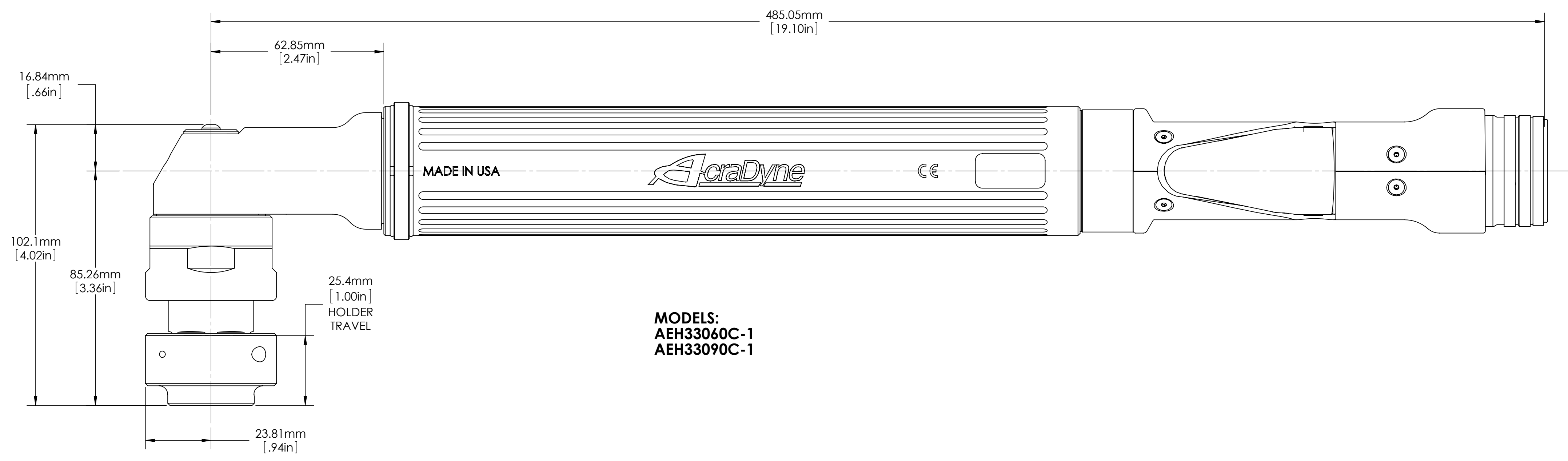
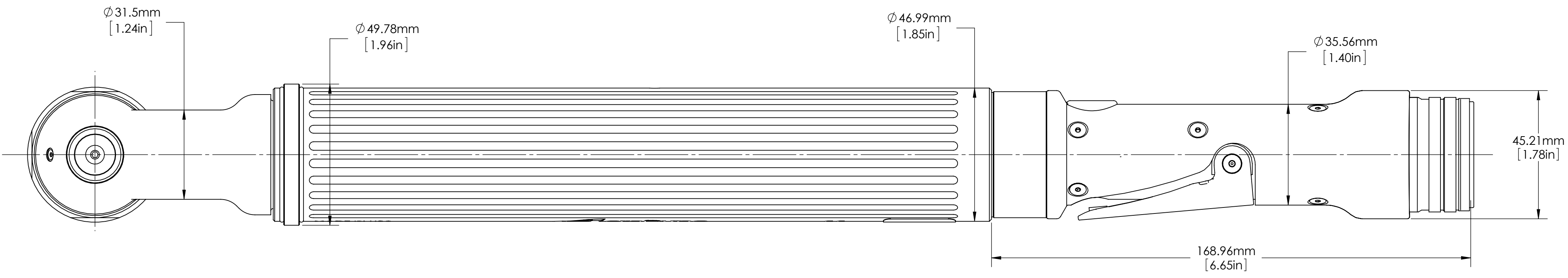
DRAWINGS AND TECHNICAL DOCUMENTS CONTROLLED BY:
ACRADYNE MECHANICAL ENGINEERING

AEH330_OC_ ANGLE NUTRUNNER 3000 SERIES - GEN 3C		
SIZE D	PART / DRAWING NUMBER AEH330_OC_	REVISION D
SCALE: 1:1	DO NOT SCALE DRAWING	SHEET 1 OF 3

BASE MODEL	DOT	SOCKET BASE	COLUMN 1	SOCKET SIZE	COLUMN 2	HOLDER BASE	COLUMN 3	HOLDER SIZE	COLUMN 4
AEH33060C-	.	X	SOCKET TYPE & EXTENSION	X	HEX SIZE	X	TANG/BIT HOLDER & EXTENSION	X	SIZE
			26915 - HEX SOCKET				26564 - BIT HOLDER		
		A	SINGLE HEX (NO EXTENSION)	A	15mm	A	1/4" BIT, NO EXTENSION	A	4mm
		B	SINGLE HEX (3mm EXTENDED)	B	16mm	B	1/4" BIT, 3mm EXTENDED	B	5mm
		C	SINGLE HEX (9mm EXTENDED)	C	17mm	C	1/4" BIT, 9mm EXTENDED	C	6mm
		D	SINGLE HEX (12mm EXTENDED)	D	18mm	D	1/4" BIT, 12mm EXTENDED	D	7mm
		E	SINGLE HEX (24mm EXTENDED)	E	19mm	E	1/4" BIT, 24mm EXTENDED	E	8mm
				F	20mm		26565 - BIT HOLDER	F	9mm
		F	SURFACE DRIVE (NO EXTENSION)	G	21mm	F	5/16" BIT, NO EXTENSION	G	10mm
		G	SURFACE DRIVE (3mm EXTENDED)	H	22mm	G	5/16" BIT, 3mm EXTENDED	H	3/16"
		H	SURFACE DRIVE (9mm EXTENDED)	I	23mm	H	5/16" BIT, 9mm EXTENDED	I	1/4"
		J	SURFACE DRIVE (12mm EXTENDED)	J	24mm	I	5/16" BIT, 12mm EXTENDED	J	5/16"
		K	SURFACE DRIVE (24mm EXTENDED)	K	26mm	I	5/16" BIT, 15mm EXTENDED	K	3/8"
		R	 SURFACE DRIVE (27mm EXTENDED)	L	27mm	J	5/16" BIT, 24mm EXTENDED	L	T15
				M	30mm		26557 - FEMALE TANG HOLDER	M	T20
		L	DOUBLE HEX (NO EXTENSION)	N	32mm	K	HEX NO EXTENSION	N	T25
		M	DOUBLE HEX (3mm EXTENDED)	O	5/8"	L	HEX (3mm EXTENDED)	O	T30
		N	DOUBLE HEX (9mm EXTENDED)	P	3/4"	M	HEX (9mm EXTENDED)	P	T40
		P	DOUBLE HEX (12mm EXTENDED)	Q	13/16"	N	HEX (12mm EXTENDED)	Q	T45
		Q	DOUBLE HEX (24mm EXTENDED)	R	7/8"	P	HEX (24mm EXTENDED)	R	T50
				S	15/16"			S	E8
				T	1"	Q	TORX (NO EXTENSION)	T	E10
				U	1-1/16"	R	TORX (3mm EXTENDED)	U	E11
				V	1-1/8"	S	TORX (9mm EXTENDED)	V	E12
				W	1-3/16"	T	TORX (12mm EXTENDED)		
				X	1-1/4"	U	TORX (24mm EXTENDED)		
				Y	14MM			W	4 x 6
				Z		V	D-TYPE (NO EXTENSION)	X	5 x 8
						W	D-TYPE (3mm EXTENDED)	Y	6 x 8
						X	D-TYPE (9mm EXTENDED)	Z	6.4 x 8
						Y	D-TYPE (12mm EXTENDED)	I	TBD
						Z	D-TYPE (24mm EXTENDED)		

****EXAMPLE MODEL NUMBER:** AEH33060C-1.CDHK = 1" TRAVEL, SINGLE HEX EXT. 9mm, 18mm HEX, 5/16" BIT HOLDER EXT. 9mm WITH 3/8" HEX BIT

  <p>10000 SE PINE STREET PORTLAND, OREGON 97216 503.254.6600</p>	<p>DOCUMENT CONTROL</p> <p>PRINTED COPIES OF THIS DOCUMENT ARE CONSIDERED TO BE UNCONTROLLED DOCUMENTS. HOLDERS ARE RESPONSIBLE FOR VERIFYING THE CURRENT REVISION LEVEL WITH PURCHASING OR ENGINEERING PRIOR TO USE OR FABRICATION. THE CONTROLLED VERSION OF THIS DOCUMENT IS ELECTRONICALLY MAINTAINED.</p>	<p>UNLESS OTHERWISE SPECIFIED, DIMENSIONS ARE IN INCHES</p> <p>DIMENSIONS AND TOLERANCING PER ANSI Y14.5 SURFACE ROUGHNESS PER ANSI Y14.36</p>				<p>AEH330_0C-_ H&D ANGLE NUTRUNNER</p> <p>3000 SERIES -GEN 3C</p>										
	<p>PROPRIETARY AND CONFIDENTIAL</p> <p>THIS DRAWING CONTAINS INFORMATION STRICTLY CONFIDENTIAL TO ACRADYNE/AIMCO. IN THE ABSENCE OF EXPRESSED WRITTEN PERMISSION, ACRADYNE/AIMCO HAS LOANED THIS COPY WITH THE MUTUAL UNDERSTANDING THAT (A) IT WILL NOT BE USED FOR ANY PURPOSE OTHER THAN FOR THAT IN WHICH IT WAS PROVIDED, (B) THE DATA CONTAINED HEREIN WILL NOT BE DISCLOSED TO OTHERS, (C) IT WILL NOT BE REPRODUCED, AND (D) IT WILL BE RETURNED TO ACRADYNE/AIMCO IMMEDIATELY UPON DEMAND.</p>	<p>BLOCK TOLERANCING PER DECIMAL:</p> <p>.X = ±.030 .XX = ±.010 .XXX = ±.005 .XXXX = ±.0005 ANGLE = ±0° 30'</p> <p>REMOVE BURRS AND SHARP EDGES: R.015 MAX MACHINE SURFACE FINISH: 125 RMS OR BETTER</p> <p>DRAWINGS AND TECHNICAL DOCUMENTS CONTROLLED BY: ACRADYNE MECHANICAL ENGINEERING</p>				<p>SIZE B</p>	<p>PART / DRAWING NUMBER AEH330_0C-_</p>	<p>REVISION D</p>								
<p>REVISION BLOCK</p> <table border="1"> <thead> <tr> <th>REVISION LEVEL</th> <th>REVISION RELEASE DATE</th> <th>DESCRIPTION OF CHANGES MADE TO PART</th> <th>ECN #</th> <th>AUTHOR/ APPROVAL</th> </tr> </thead> <tbody> <tr> <td> </td> <td> </td> <td> </td> <td> </td> <td> </td> </tr> </tbody> </table>				REVISION LEVEL	REVISION RELEASE DATE	DESCRIPTION OF CHANGES MADE TO PART	ECN #	AUTHOR/ APPROVAL						<p>SCALE 1:8</p>	<p>DO NOT SCALE DRAWING</p>	<p>SHEET 3 OF 3</p>
REVISION LEVEL	REVISION RELEASE DATE	DESCRIPTION OF CHANGES MADE TO PART	ECN #	AUTHOR/ APPROVAL												



DOCUMENT CONTROL
 PRINTED COPIES OF THIS DOCUMENT ARE CONSIDERED TO BE UNCONTROLLED DOCUMENTS. HOLDERS ARE RESPONSIBLE FOR VERIFYING THE CURRENT REVISION LEVEL WITH PURCHASING OR ENGINEERING PRIOR TO USE OR FABRICATION. THE CONTROLLED VERSION OF THIS DOCUMENT IS ELECTRONICALLY MAINTAINED.

PROPRIETARY AND CONFIDENTIAL
 THIS DRAWING CONTAINS INFORMATION STRICTLY CONFIDENTIAL TO ACRADYNE/AIMCO. IN THE ABSENCE OF EXPRESSED WRITTEN PERMISSION, ACRADYNE/AIMCO HAS LOANED THIS COPY WITH THE MUTUAL UNDERSTANDING THAT (A) IT WILL NOT BE USED FOR ANY PURPOSE OTHER THAN FOR THAT IN WHICH IT WAS PROVIDED, (B) THE DATA CONTAINED HEREIN WILL NOT BE DISCLOSED TO OTHERS, (C) IT WILL NOT BE REPRODUCED, AND (D) IT WILL BE RETURNED TO ACRADYNE/AIMCO IMMEDIATELY UPON DEMAND.

REVISION LEVEL	REVISION RELEASE DATE	DESCRIPTION OF CHANGES MADE TO PART	ECN #	AUTHOR/ APPROVAL
REVISION BLOCK				

UNLESS OTHERWISE SPECIFIED, DIMENSIONS ARE IN INCHES
 DIMENSIONS AND TOLERANCING PER ANSI Y14.5
 SURFACE ROUGHNESS PER ANSI Y14.36

BLOCK TOLERANCING PER DECIMAL:
 X = ±.030 XX = ±.010 XXX = ±.005 XXXX = ±.0005
 ANGLE = ±0° 30'

REMOVE BURRS AND SHARP EDGES: R.015 MAX
 MACHINE SURFACE FINISH: 125 RMS OR BETTER

DRAWINGS AND TECHNICAL DOCUMENTS CONTROLLED BY:
ACRADYNE MECHANICAL ENGINEERING

AEH330_OC- TOOL OUTLINE GEN 3C, 3000 SERIES		
SIZE D	PART / DRAWING NUMBER AEH330_OC- _	REVISION D
SCALE 1:1	DO NOT SCALE DRAWING	SHEET 2 OF 3