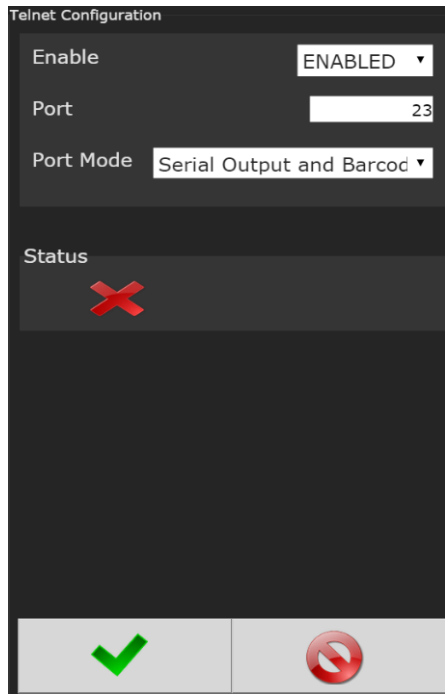




Using an AIMCO Gen IV Controller with Telnet

Using the Touch Screen or System Port, navigate to Controller→Protocols→Telnet

Telnet



Enable: Enable/Disable Telnet feature (It is enabled by default).

Port: The TCP port the controller will listen on and accept a connection. The default is 23.

Port Mode:

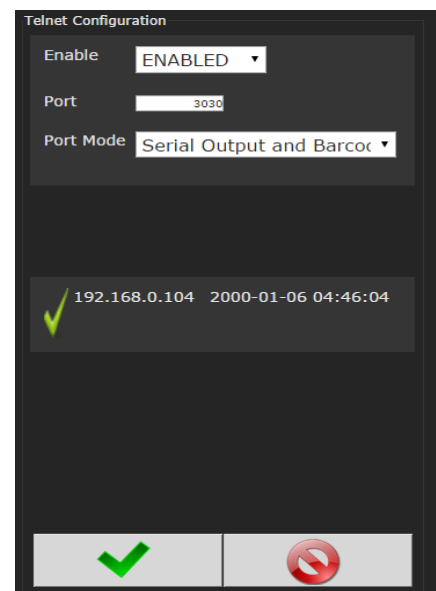
Serial Output: Will send out a serial string at the end of each rundown.

Barcode Reader: Acts as a serial barcode reader. Each new string received on this port will be passed to the ID system the same as a serial barcode reader.

Serial Output and Barcode Reader: Is both.



Indicates no host is connected to the controller.



Indicates there is a host connected. Included are the host IP address and time the connection was established.